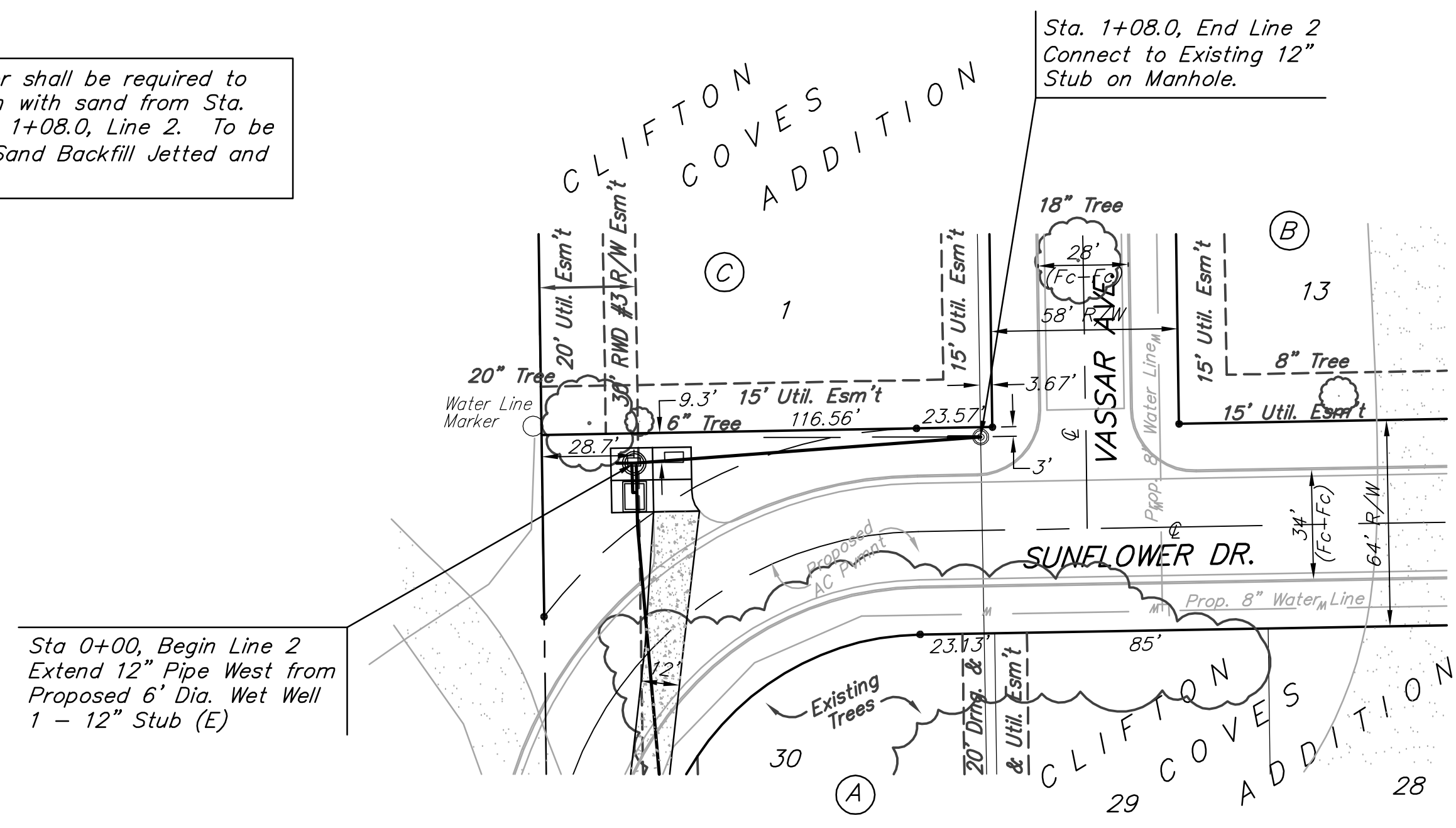


BENCHMARK:
 Arkansas River bridge & 63rd St. S. City of
 Wichita Benchmark Disc. SW Cor. of bridge,
 top of hubguard. 500'± E. of Grove.
 Elev. = 1269.95 NGVD29 (per City record)

Brass plate on the NE wingwall of Arkansas
 River bridge & 63rd St. S.
 Elev. = 1267.48 NGVD29 (per County record)

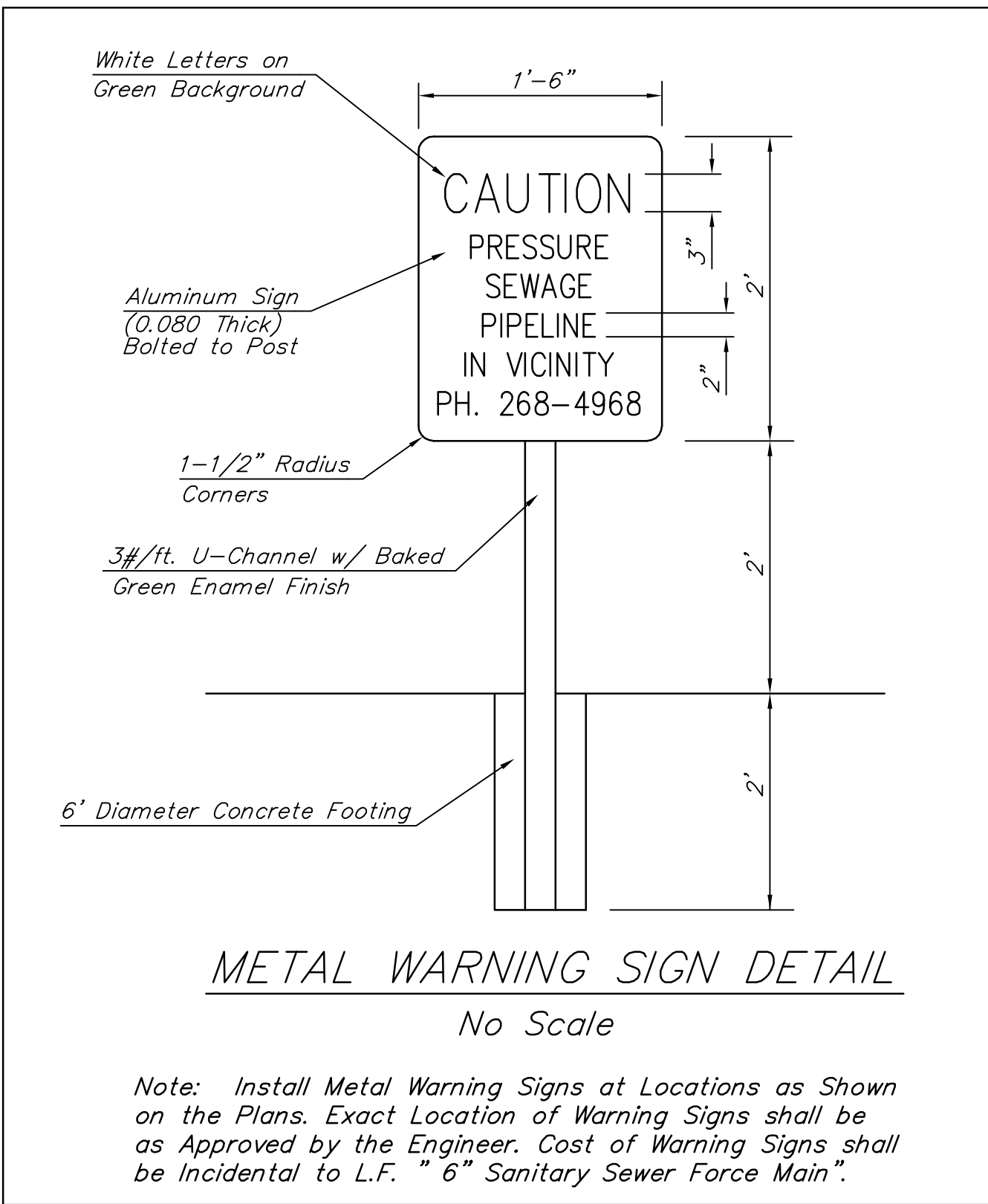
The Contractor shall be required to
 backfill trench with sand from Sta.
 0+00 to Sta. 1+08.0, Line 2. To be
 bid as "L.F. Sand Backfill Jetted and
 Vibrated"



Sta 0+00, Begin Line 2
 Extend 12" Pipe West from
 Proposed 6' Dia. Wet Well
 1 - 12" Stub (E)

Sta. 1+08.0, End Line 2
 Connect to Existing 12"
 Stub on Manhole.

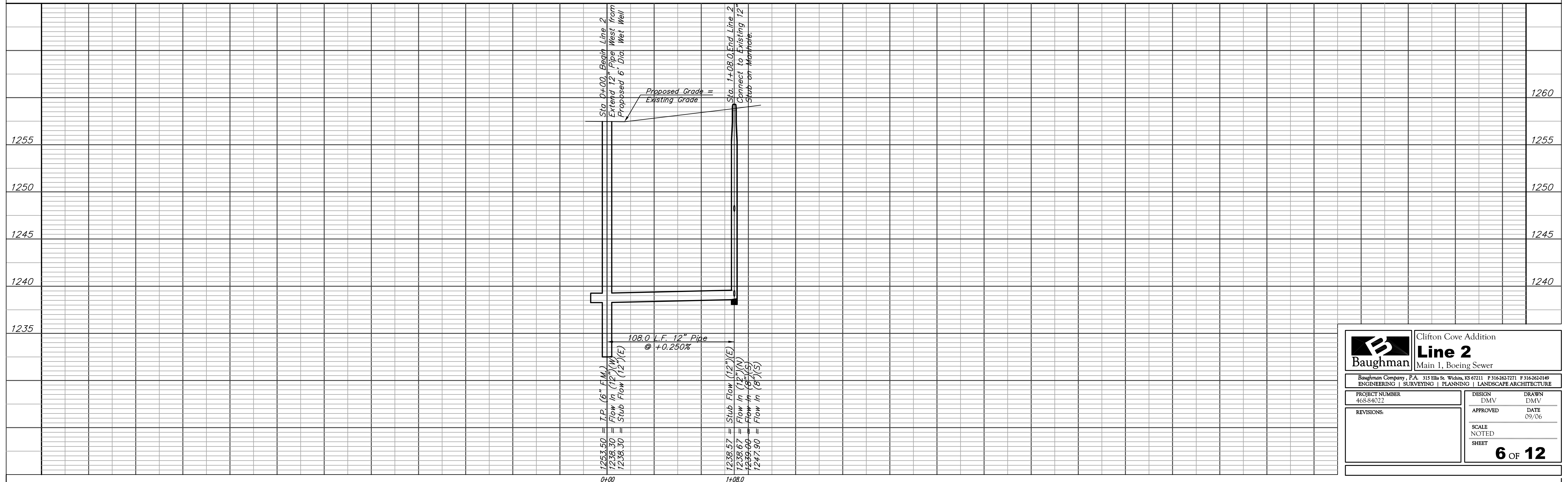
Existing Trees Shall be removed ONLY with
 approval of the Engineer. Trees Not in
 Direct Conflict With Proposed New
 Construction Shall Remain And Be Protected
 From Damage. Cost to be Included in Bid
 Item "Site Clearing & Restoration"



METAL WARNING SIGN DETAIL
 No Scale

Note: Install Metal Warning Signs at Locations as Shown
 on the Plans. Exact Location of Warning Signs shall be
 as Approved by the Engineer. Cost of Warning Signs shall
 be Incidental to L.F. "6" Sanitary Sewer Force Main".

Scale:
 1" = 40' Horizontal
 1" = 5' Vertical
 • = Iron



		Clifton Cove Addition	
		Line 2	
		Main 1, Boeing Sewer	
<small>Baughman Company, P.A. 315 Ellis St. Wichita, KS 67211 P 316-262-7271 F 316-262-0149 ENGINEERING SURVEYING PLANNING LANDSCAPE ARCHITECTURE</small>			
PROJECT NUMBER 46S-84032	DESIGN DMV	DRAWN DMV	
REVISIONS:	APPROVED	DATE 09/06	
		SCALE NOTED	
		SHEET	6 OF 12