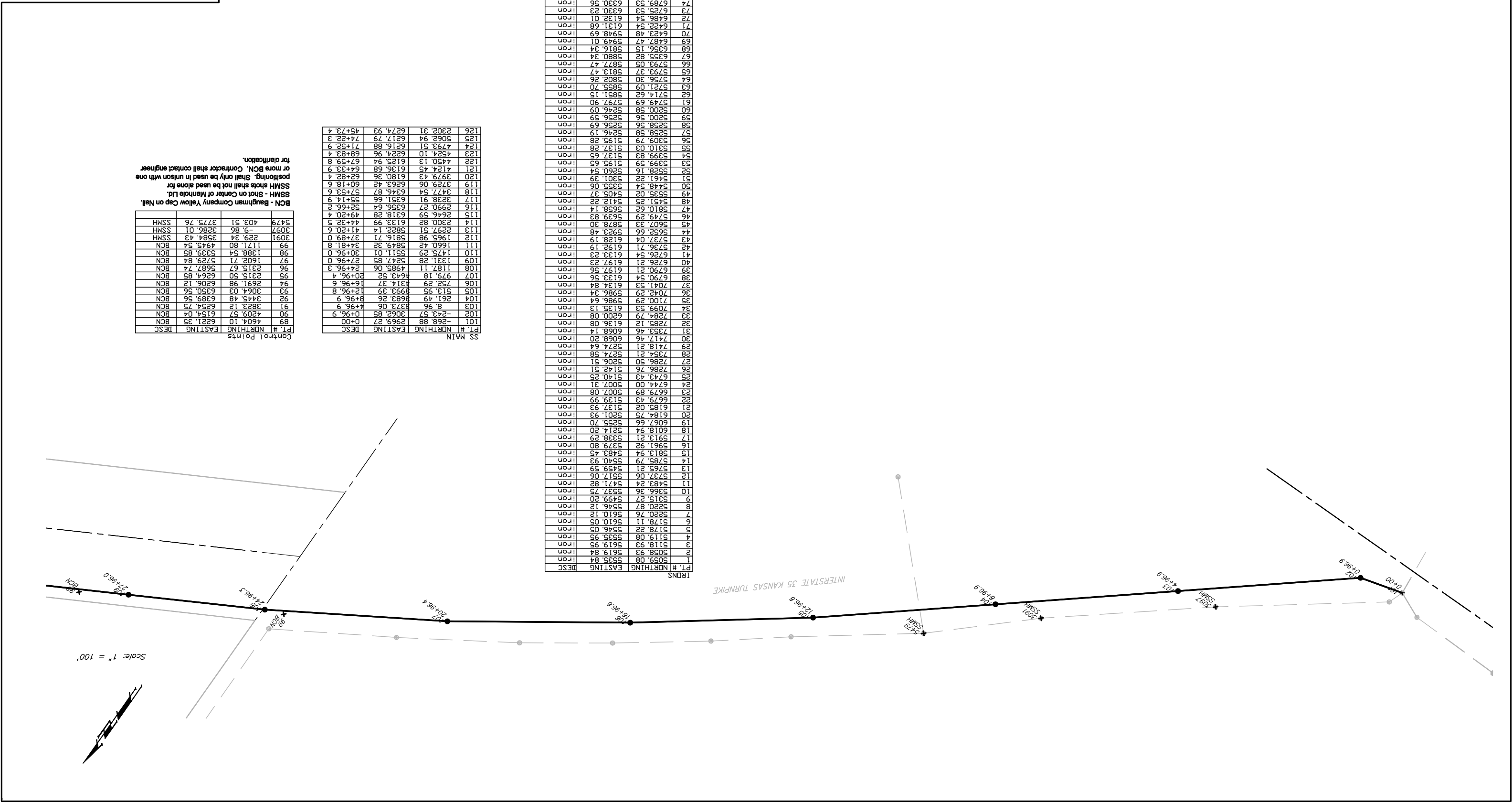


Baughman
 SANITARY SEWER MAIN
COORDINATE SHEET
 STONERIDGE ADDITON

Baughman Company, P.A. 315 Main St. Waltham, MA 02127 P 914-621-7771 F 914-621-0196
 ENGINEERING | SURVEYING | PLANNING | LANDSCAPE ARCHITECTURE

PROJECT NUMBER: 468-0171
 DRAWN: ATD
 TITLE: SANITARY SEWER MAIN
 APPROVED: DATE: 01/07
 SCALE: Noted
 SHEET: 15 OF 18
 06-04-B332



Control Points
 PT. # NORTHING EASTING DESC
 89 4604.10 6221.35 BCN
 90 4209.57 6154.04 BCN
 91 3823.12 6254.75 BCN
 92 3445.48 6389.56 BCN
 93 3064.03 6500.56 BCN
 94 2691.98 6606.12 BCN
 95 2315.50 6664.85 BCN
 96 2315.67 5687.74 BCN
 97 1602.71 5729.84 BCN
 98 1388.54 5339.85 BCN
 99 1171.80 4945.54 BCN
 3091 229.34 3584.43 SSMH
 3097 -9.86 3286.01 SSMH
 5479 403.51 3775.76 SSMH

BCN - Baughman Company Yellow Cap on Nail.
 SSMH - Shot on Center of Manhole Lid.
 SSMH shots shall not be used alone for positioning. Shall only be used in unison with one or more BCN. Contractor shall contact engineer for clarification.

PT. #	NORTHING	EASTING	DESC
126	2302.31	6274.93	45+73.4
125	5062.94	6217.79	74+22.3
124	4793.51	6216.88	71+52.9
123	4524.10	6224.96	68+83.4
122	4450.13	6155.94	67+59.8
121	4124.49	6136.68	64+33.9
120	3979.49	6180.36	62+32.4
119	3729.06	6263.42	60+18.6
118	3477.54	6346.87	57+53.6
117	3238.91	6351.66	55+14.9
116	2990.27	6356.64	52+66.2
115	2646.59	6318.28	49+20.4
114	2300.82	6133.99	44+32.5
113	2297.51	5822.14	41+20.6
112	1965.98	5816.71	37+89.0
111	1660.42	5849.32	34+81.8
110	1475.29	5511.01	30+96.0
109	1331.28	5247.85	27+96.0
108	1187.11	4985.06	24+96.3
107	979.18	4643.52	20+96.4
106	752.29	4314.37	16+96.6
105	513.95	3993.39	12+96.8
104	261.49	3683.26	8+96.9
103	8.96	3373.06	4+96.9
102	-243.57	3062.85	0+96.9
101	-668.88	2969.27	0+00

PT. #	NORTHING	EASTING	DESC
1	5053.08	5535.84	DESC
2	5058.93	5619.84	IRDS
3	5118.08	5535.95	IRDS
4	5178.22	5546.95	IRDS
5	5178.22	5546.95	IRDS
6	5178.11	5610.05	IRDS
7	5220.76	5610.12	IRDS
8	5220.87	5546.12	IRDS
9	5315.27	5499.20	IRDS
10	5366.36	5537.75	IRDS
11	5483.24	5471.82	IRDS
12	5737.06	5517.06	IRDS
13	5765.21	5459.59	IRDS
14	5785.79	5540.93	IRDS
15	5813.94	5483.45	IRDS
16	5961.92	5379.80	IRDS
17	5913.21	5338.29	IRDS
18	6018.94	5214.20	IRDS
19	6067.66	5255.70	IRDS
20	6184.75	5201.93	IRDS
21	6185.02	5137.93	IRDS
22	6679.43	5139.99	IRDS
23	6679.89	5007.08	IRDS
24	6744.00	5007.31	IRDS
25	6743.43	5140.25	IRDS
26	7282.76	5142.51	IRDS
27	7286.50	5206.51	IRDS
28	7354.21	5274.58	IRDS
29	7418.21	5274.64	IRDS
30	7417.46	6068.20	IRDS
31	7353.46	6068.14	IRDS
32	7285.12	6136.08	IRDS
33	7284.79	6200.08	IRDS
34	7099.53	6135.13	IRDS
35	7100.29	5986.64	IRDS
36	7042.29	5986.34	IRDS
37	6704.53	6134.84	IRDS
38	6790.54	6133.56	IRDS
39	6790.21	6197.56	IRDS
40	6726.21	6197.23	IRDS
41	6726.54	6133.23	IRDS
42	6736.71	6192.19	IRDS
43	6737.04	6128.19	IRDS
44	6652.66	5923.48	IRDS
45	6749.29	5878.89	IRDS
46	6749.29	5878.89	IRDS
47	5658.62	5878.89	IRDS
48	5451.25	5412.22	IRDS
49	5535.02	5405.37	IRDS
50	5448.54	5355.06	IRDS
51	5461.22	5301.39	IRDS
52	5528.16	5260.54	IRDS
53	5599.59	5195.65	IRDS
54	5599.83	5137.65	IRDS
55	5310.03	5137.28	IRDS
56	5309.79	5195.28	IRDS
57	5258.58	5246.19	IRDS
58	5258.56	5256.69	IRDS
59	5200.58	5246.09	IRDS
60	5200.58	5246.09	IRDS
61	5749.69	5797.90	IRDS
62	5714.62	5851.15	IRDS
63	5721.09	5855.70	IRDS
64	5756.30	5802.26	IRDS
65	5793.37	5813.47	IRDS
66	5793.05	5877.47	IRDS
67	6352.82	5880.34	IRDS
68	6352.15	5816.34	IRDS
69	6487.47	5949.01	IRDS
70	6423.48	5948.69	IRDS
71	6422.54	6131.68	IRDS
72	6486.54	6132.01	IRDS
73	6725.53	6330.23	IRDS
74	6789.53	6330.56	IRDS
75	6728.63	5722.01	IRDS
76	6792.63	5722.34	IRDS
77	6860.98	5654.68	IRDS
78	6861.30	5590.69	IRDS
79	6977.51	5591.28	IRDS
80	6977.18	5655.28	IRDS
81	7109.85	5523.92	IRDS
82	7045.85	5523.66	IRDS
83	7111.18	5205.78	IRDS
84	7047.18	5205.52	IRDS
85	7541.47	5010.50	IRDS
86	7540.29	6334.31	IRDS
87	5057.76	6321.73	IRDS
88	5060.00	5000.25	IRDS