

SANITARY SEWER PLANS FOR
FOLIAGE FOURTH ADDITION
 LATERAL 57, MAIN 24, WAR INDUSTRIES SEWER

PROJECT NO. 468-84519

THE CITY OF WICHITA, KANSAS
 JAMES L. ARMOUR, CITY ENGINEER

OCA NO. 744285

GENERAL NOTES

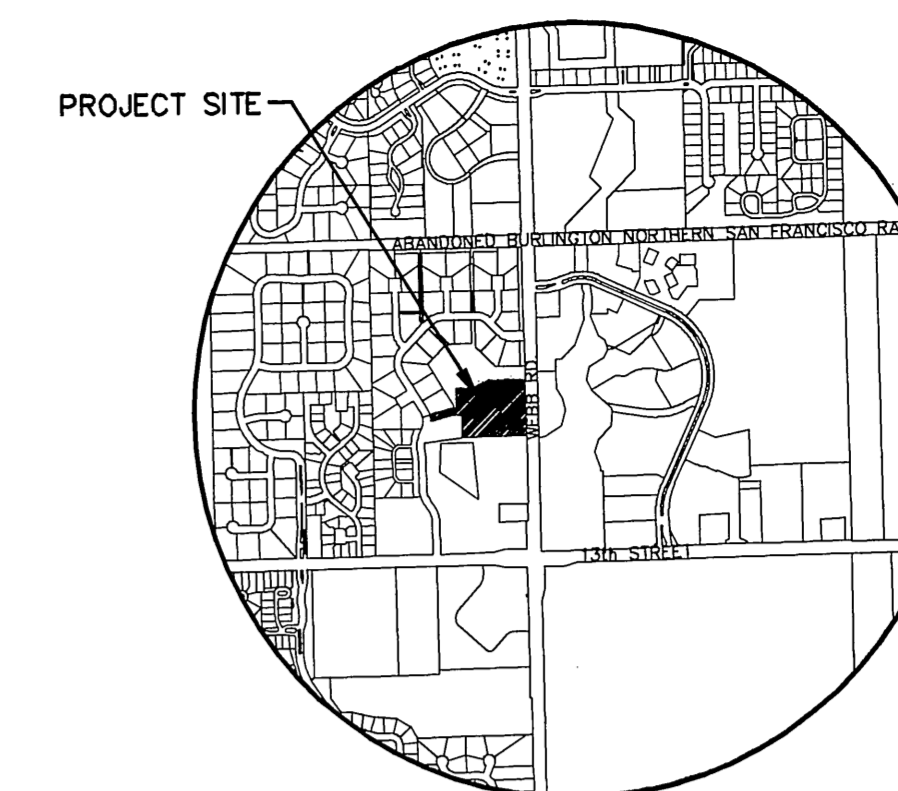
1. UNLESS SHOWN OR STATED OTHERWISE ON THESE DRAWINGS, MATERIALS AND CONSTRUCTION SHALL BE IN ACCORDANCE WITH CITY OF WICHITA STANDARD SPECIFICATIONS.
2. CONTRACTOR WILL BE REQUIRED TO PROVIDE A MINIMUM ADVANCE NOTICE OF SEVENTY-TWO (72) HOURS TO UTILITY COMPANIES PRIOR TO STARTING ANY EXCAVATION AS FOLLOWS:

KANSAS ONE-CALL 1-800-344-7233
 or 687-2470 (LOCAL WICHITA)

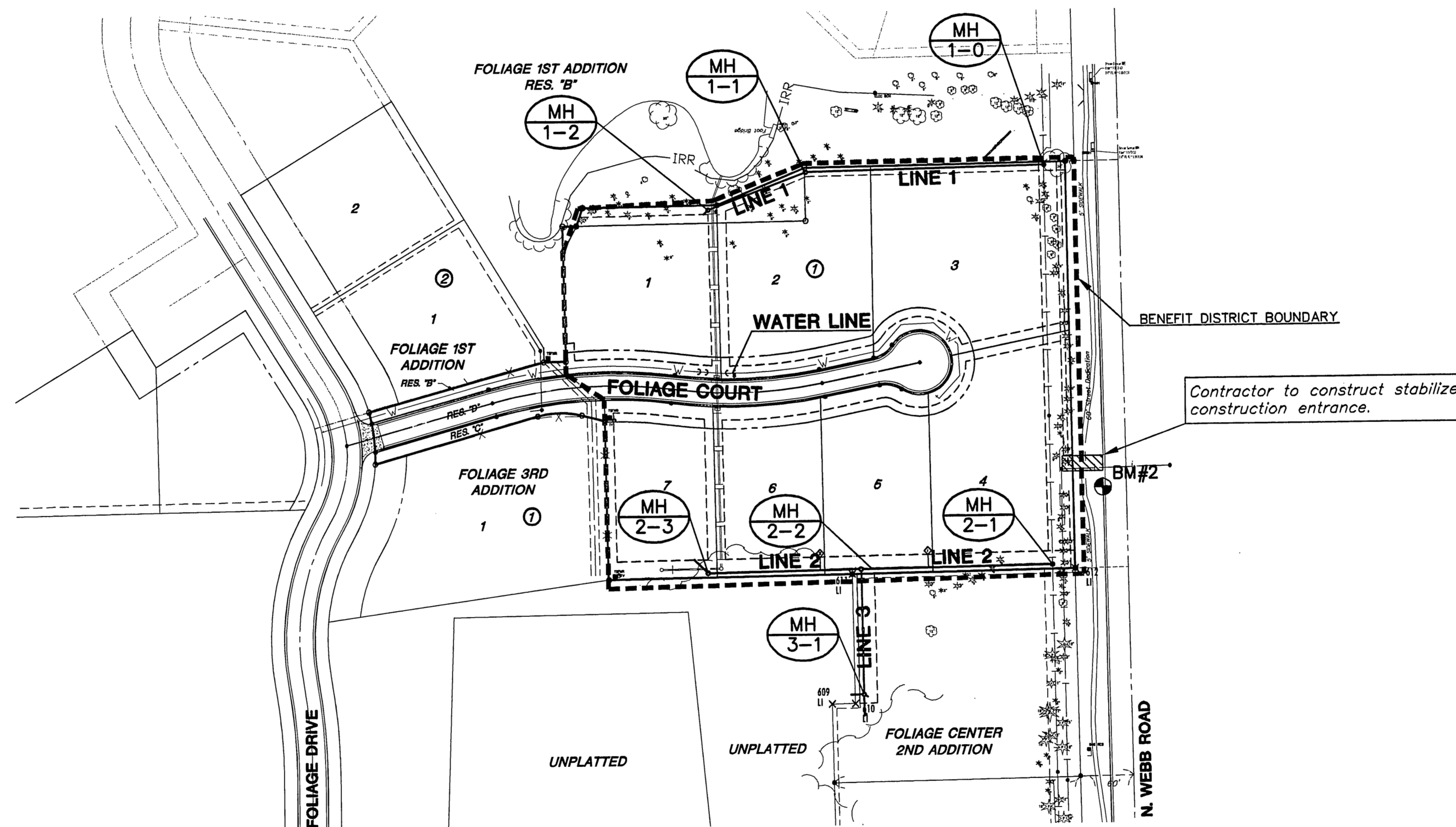
THE CONTRACTOR MUST NOTIFY THE FOLLOWING IN CASE OF AN EMERGENCY:

| | |
|-------------------------------|--------------|
| SBC (TELEPHONE) | 800-870-8390 |
| COX COMMUNICATIONS (CABLE) | 262-0661 |
| KANSAS GAS SERVICE (GAS) | 832-3101 |
| CITY OF WICHITA WATER & SEWER | 262-6000 |
| WESTAR (ELECTRIC) | 261-6512 |
| AQUILA (GAS) | 800-303-0357 |

3. THE CONTRACTOR SHALL BE RESPONSIBLE FOR PRESERVING PROPERTY IRONS. THE CONTRACTOR WILL BE REQUIRED TO RE-ESTABLISH ANY PROPERTY IRONS WHICH ARE DAMAGED OR DESTROYED BY HIS CONSTRUCTION OPERATIONS. SUCH IRONS SHALL BE RE-ESTABLISHED BY A LICENSED LAND SURVEYOR IN ACCORDANCE WITH STATE LAWS.
4. EXISTING UTILITIES AND THEIR LOCATIONS, AS SHOWN ON THE PLANS REPRESENT THE BEST INFORMATION OBTAINABLE FOR DESIGN. LOCATION INFORMATION HAS BEEN OBTAINED FROM THE VARIOUS UTILITY COMPANIES AND IS EITHER FROM COMPANY RECORD DRAWINGS OR COMPANY PROVIDED FIELD LOCATIONS. THE PLAN LOCATIONS SHOWN ARE NOT GUARANTEED. ADDITIONAL EXISTING UTILITIES MAY ALSO BE ENCOUNTERED.
5. RUBBLE FROM THE REMOVAL OF MISCELLANEOUS STRUCTURES AND EXCESS EXCAVATION WHICH IS TO BE WASTED SHALL BE DISPOSED OF ON SITES TO BE PROVIDED BY THE CONTRACTOR. THESE SITES SHALL BE APPROVED BY THE ENGINEER AS TO SUITABILITY, APPEARANCE AND SITE LOCATION. LOCATIONS THAT, IN THE OPINION OF THE ENGINEER, WILL LEAVE AN UNSIGHTLY APPEARANCE WILL NOT BE APPROVED. ALL DISPOSAL SITES MUST BE APPROVED BY THE KANSAS DEPARTMENT OF HEALTH AND ENVIRONMENT. MATERIAL EITHER STOCKPILED OR DISPOSED OF IN A FLOOD PLAIN WOULD REQUIRE A KANSAS STATE BOARD OF AGRICULTURE PERMIT. ANY MATERIAL DUMPED IN WATERS OF THE UNITED STATES OR WETLANDS IS SUBJECT TO U.S. CORPS OF ENGINEERS PERMITTING REGULATIONS. ANY MATERIAL BURIED OR STOCKPILED BEYOND APPROVED CONSTRUCTION LIMITS WOULD REQUIRE ADDITIONAL ARCHAEOLOGICAL INVESTIGATIONS UNLESS BURIED IN A PREVIOUSLY APPROVED BORROW LOCATION.
6. COST OF EXCAVATION, HAULING, AND DUMPING OF EXCESS EXCAVATION SHALL BE SUBSIDIARY TO THE PROJECT.
7. A PORTION OF EXCESS EXCAVATED MATERIAL SHALL BE MOUNDED AROUND MANHOLES WHICH EXTEND MORE THAN ONE (1) FOOT ABOVE THE EXISTING GROUND. SUCH MOUNDS SHALL BE CONSTRUCTED WITH A SIX (6) FOOT DIAMETER FLAT TOP WITH 4 TO 1 SIDE SLOPES DOWN TO THE ORIGINAL GROUND. THE ELEVATION OF THE FLAT TOP OF THE MOUND SHALL BE 0.4 FOOT BELOW THE TOP OF THE MANHOLE.
8. ALL STUBS AND PLUGGED PIPES SHALL BE LOCATED WITH GREEN PLASTIC TAPE IN THE SAME MANNER AS RISERS.
9. CONNECTING TO EXISTING MANHOLES:
 PRIOR TO LAYING SEWER LINES USING EXISTING STUBS IN EXISTING MANHOLES, THE CONTRACTOR SHALL EXPOSE AND VERIFY THE ELEVATION, GRADE AND ALIGNMENT OF EXISTING STUBS AND NOTIFY THE ENGINEER OF ANY DEVIATION FROM THE PLAN. WHERE CONNECTION TO AN EXISTING MANHOLE THAT DOES NOT HAVE AN EXISTING STUB OR THE STUB IS UNUSABLE DUE TO ELEVATION GRADE OR ALIGNMENT, THE CONTRACTOR SHALL BORE CUT INTO EXISTING MANHOLE WALL TO MAKE CONNECTION USING APPROVED WATER STOP GASKET, AND RESHAPE THE EXISTING MANHOLE INVERT TO PROVIDE SMOOTH FLOW. THE COST OF CONNECTING TO EXISTING MANHOLES IS INCIDENTAL TO THE PROJECT.
10. TREES AND SHRUBS IN PUBLIC RIGHT-OF-WAY WHICH ARE IN DIRECT CONFLICT WITH PROPOSED NEW CONSTRUCTION SHALL BE REMOVED BY THE CONTRACTOR WITH THE ENGINEER'S APPROVAL. TREES AND SHRUBS WHICH ARE NOT IN DIRECT CONFLICT WITH PROPOSED NEW CONSTRUCTION SHALL BE SAVED AND PROTECTED FROM DAMAGE.
11. ALL DISTURBED AREAS TO BE SEEDDED WITH RYE GRASS AT A RATE OF 200 LBS. PER ACRE WITHIN 10 DAYS OF CONSTRUCTION. CONTRACTOR TO PREPARE GROUND PER CITY SPECIFICATIONS. COST IS SUBSIDIARY TO SITE PREPARATION AND RESTORATION.
12. THE SANITARY SEWER MAIN SHALL BE TELEVISED AND AIR TESTED PRIOR TO MAKING ANY SERVICE CONNECTIONS TO THE NEW MAIN.
13. THE CONTRACTOR SHALL OBTAIN A SEWER SERVICE CONNECTION PERMIT FROM THE CITY OF WICHITA OFFICE OF CENTRAL INSPECTION PRIOR TO MAKING ANY SERVICE CONNECTIONS TO THE SANITARY SEWER MAIN. CONTACT BETTY ROARK AT 268-4341.
14. ALL EXISTING SERVICE LINES TO REMAIN IN PLACE AND BE CONNECTED TO THE NEW SANITARY SEWER MAIN SHALL REQUIRE TV INSPECTION AND ACCEPTANCE BY THE CITY OF WICHITA OFFICE OF CENTRAL INSPECTION PRIOR TO CONNECTION BEING MADE.
15. SANITARY SEWER SERVICE LINES SHALL BE INSTALLED BY A LICENCED DRAIN LAYER.



VICINITY MAP

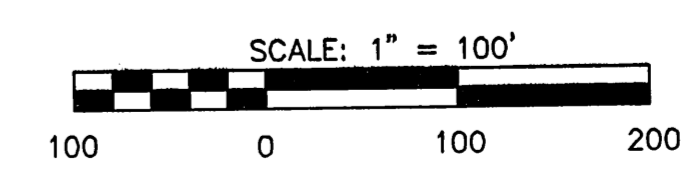


INDEX TO DRAWINGS

| SHEET NO. | DESCRIPTION |
|-----------|-------------------------|
| 1 | TITLE SHEET |
| 2-3 | DETAILS |
| 4 | LINE 1 |
| 5 | LINE 2 |
| 6 | LINE 3 |
| 7 | TREE PROTECTION DETAILS |
| 8 | BUBBLE MAP |
| 9-13 | BMP DETAILS |
| 14 | FINAL PLAT |

BENCHMARKS

- BM#1 SQUARE CUT TOP WEST SIDE CURB INLET, 2ND CURB INLET NORTH OF WEBB ROAD AND 13TH ST. WEST SIDE WEBB ROAD. APPROX. 500' NORTH WEBB/13TH. ELEV. = 1373.47(NGVD 29)
- BM#2 SQUARE CUT TOP SOUTH SIDE OF ENTRANCE TO 1401 N WEBB ROAD, WEST SIDE WEBB ROAD, APPROXIMATELY 1100 FEET NORTH OF WEBB RD. AND 13TH ST. ELEV. = 1375.36(NGVD 29)



Mies Construction - Contractor
 Derrick Hicks - City of Wichita, Inspector
 Date Released: 07/24/08
 As-Built
 pdf: APR 12/15/08

MKEC
 ENGINEERING
 CONSULTANTS, INC.
 411 N. WEBB ROAD
 WICHITA, KS. 67206
 316-684-9600

SANITARY SEWER PLANS
FOLIAGE FOURTH ADDITION
 PHASE 1

TITLE SHEET

SHEET TITLE: 04274
 PROJECT NUMBER: 04274

SRS | JWC | GJA
 DESIGNED | DRAWN | CHECKED

ISSUED: May 2008
 REVISED:

SHEET NO. 1 of 14

PLOTDATE: Tuesday, May 20, 2008 @ 09:39AM

J:\CIVIL\04274\DWG\SSA\04274BET.DWG