

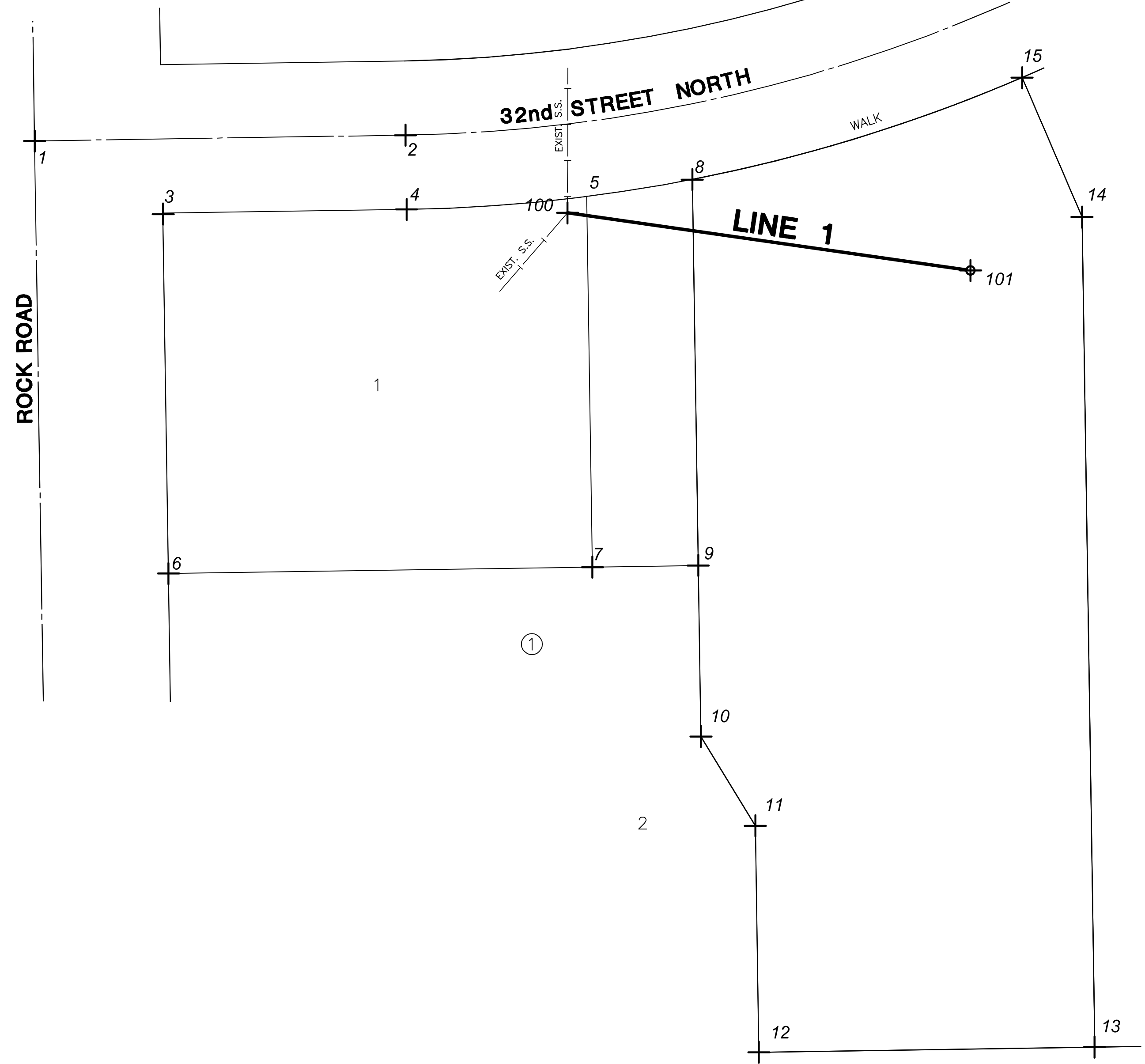
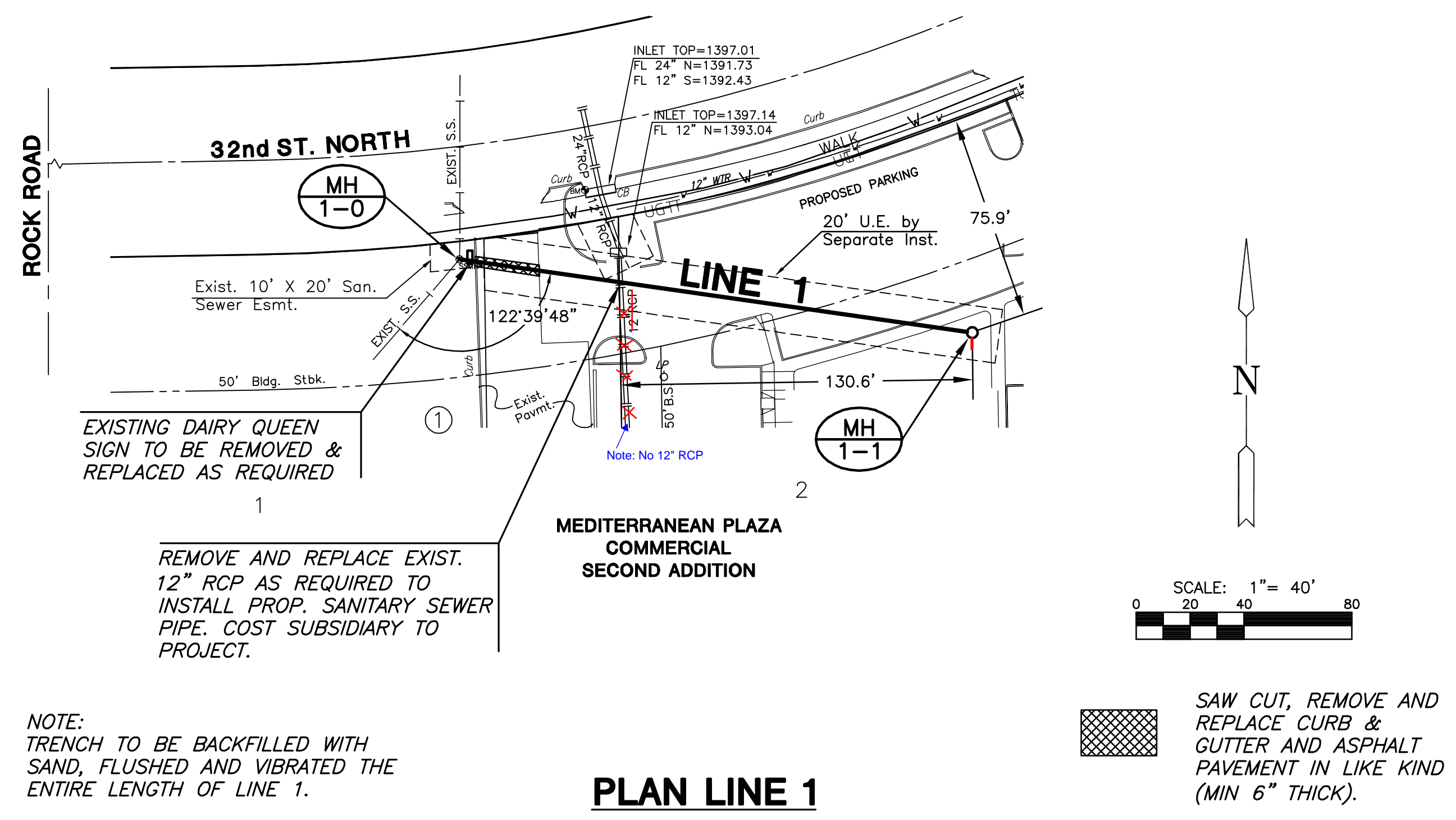
**SANITARY SEWER PLANS
NORTH ROCK RETAIL**

**LINE 1
&
BUBBLE MAP**
SHEET TITLE
468-84529
PROJECT NUMBER

DESIGN BY: *DFL*
DRAWN BY: *DM*
CHECKED BY: *GJA*

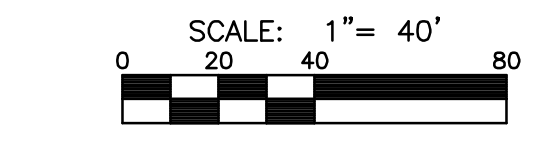
ISSUED: *August 2008*
REVISED:

SHEET NO.
3 of 9

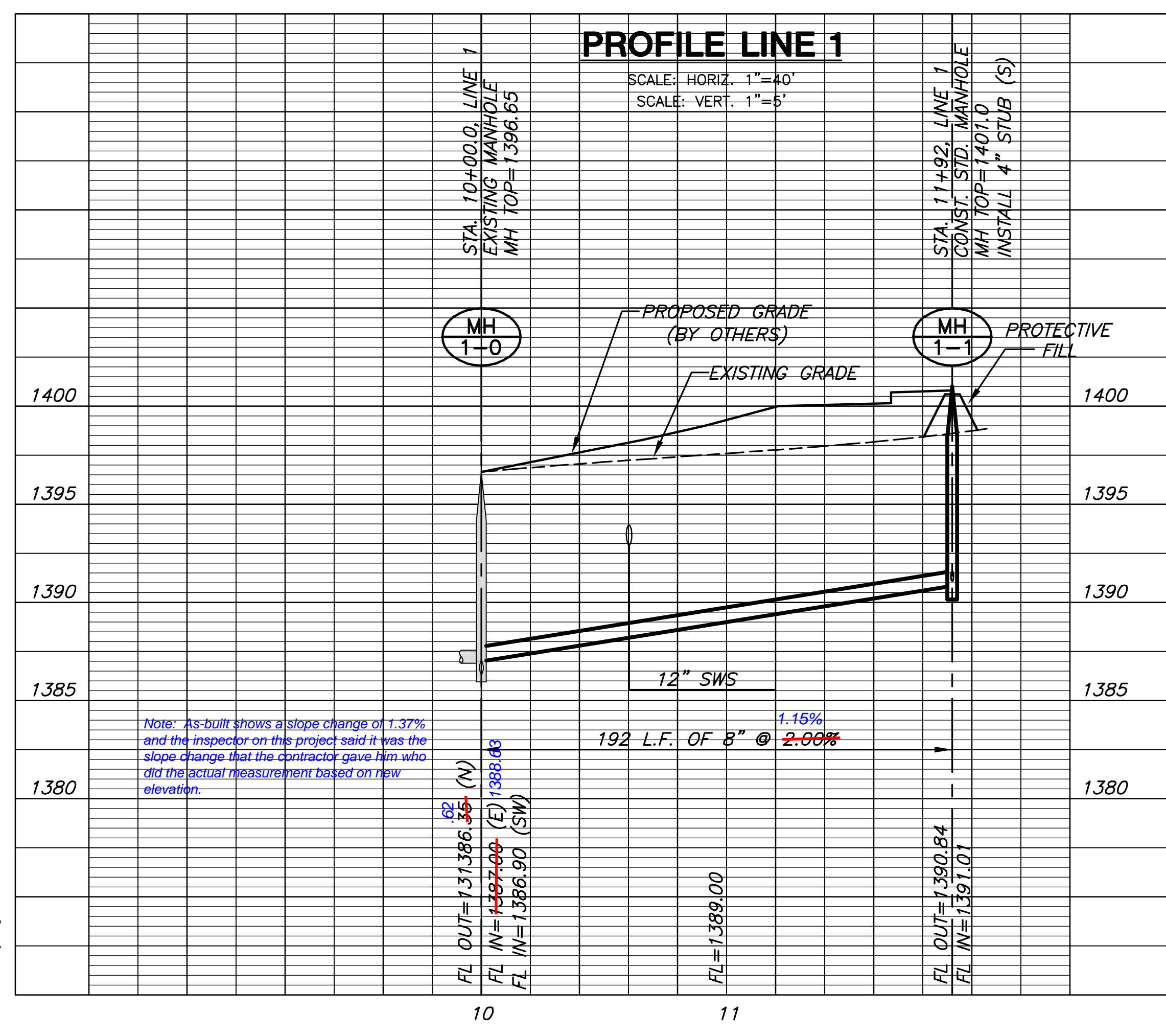


NOTE:
TRENCH TO BE BACKFILLED WITH SAND, FLUSHED AND VIBRATED THE ENTIRE LENGTH OF LINE 1.

PLAN LINE 1



SAW CUT, REMOVE AND REPLACE CURB & GUTTER AND ASPHALT PAVEMENT IN LIKE KIND (MIN 6" THICK).



PLAT IRONS			
Point #	Northing	Easting	Desc.
1	6649.81	4974.42	PI
2	6652.52	5149.39	PC
3	3315.74	5034.95	IP
4	6617.52	5149.93	IP
5	6623.58	5234.86	IP
6	6445.76	5037.59	IP
7	6448.80	5237.57	IP
8	6631.62	5284.74	IP
9	6449.56	5287.56	IP
10	6368.89	5288.81	IP
11	6326.77	5314.47	IP
12	6219.97	5316.13	IP
13	6222.38	5474.58	IP
14	6613.93	5468.62	IP
15	6679.68	5440.33	IP

BUBBLE MAP

SEWER POINTS			
Point #	Northing	Easting	Desc.
100	6615.93	5225.88	MH
101	6588.76	5416.00	MH

PLOTED: Wednesday, August 27, 2008 @ 10:26AM

J:\CIVIL\08102\DWG\SAN\08102_B1.DWG