

BENCHMARKS:
 City of Wichita Disc at Southwest
 Corner of 135th St. W. & 13th St. N
 30.00'± S. of ☐
 35.00'± W. of ☐
 Elev. = 1355.65 NGVD29

Small Railroad Spike in 2nd HLP W.
 of 135th St. W. on South Side of
 13th St. N., (N. Face of HLP).
 Elev. = 1359.50 NGVD29

Small Railroad Spike in 4th HLP W.
 of 135th St. W. on South Side of
 13th St. N., (N. Face of HLP).
 Elev. = 1366.64 NGVD29

SEWER SERVICE TABLE

NUMBER	TYPE	LOCATION				FOR INFORMATION ONLY	
		LOT NO.	BLOCK NO.	LINE NO.	STATION/ DIRECTION	APPROXIMATE LENGTH 4" PIPE	
						VERTICAL	HORIZONTAL
14	10" X 4" Tee	13	2	1	10+78/Lt.	10'	5'
15	10" X 4" Tee	12	2	1	11+48/Lt.	9'	5'
16	10" X 4" Tee	9	B	1	11+85/Rt.	9'	67'
17	10" X 4" Tee	11	2	1	12+20/Lt.	9.5'	5'
18	10" X 4" Tee	8	B	1	12+82/Rt.	10.5'	67'
19	10" X 4" Tee	10	2	1	12+92/Lt.	10.5'	5'
20	8" X 4" Tee	9	2	1	13+64/Lt.	10'	5'
21	8" X 4" Tee	7	B	1	13+78/Rt.	9'	67'
22	8" X 4" Tee	8	2	1	14+36/Lt.	9'	5'
23	8" X 4" Tee	6	B	1	14+73/Rt.	9'	67'

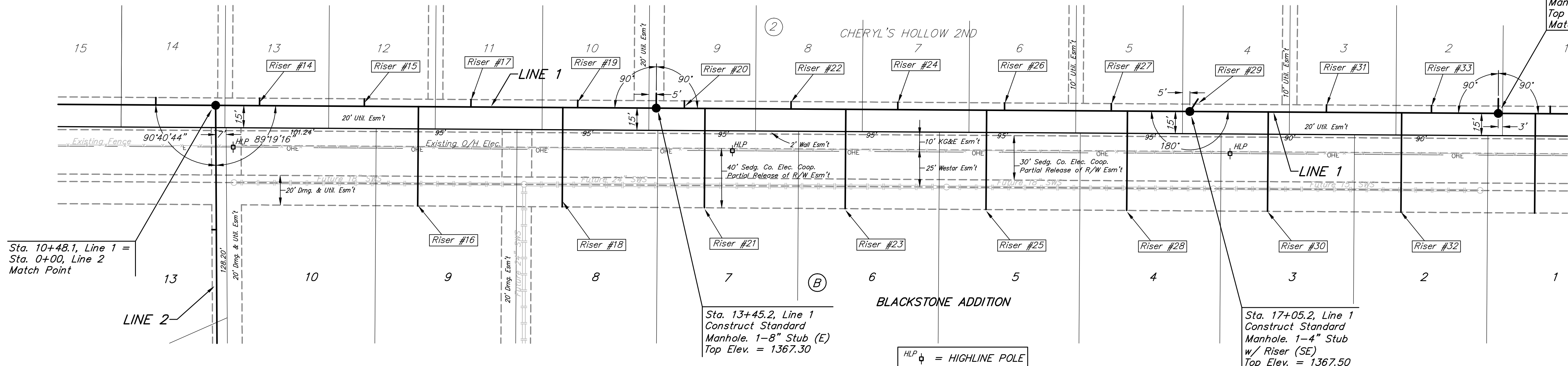
NOTE: Vertical Riser Pipe shall be extended to 2' minimum above ground water elevation and 4' maximum below proposed ground elevation.

SEWER SERVICE TABLE

NUMBER	TYPE	LOCATION				FOR INFORMATION ONLY	
		LOT NO.	BLOCK NO.	LINE NO.	STATION/ DIRECTION	APPROXIMATE LENGTH 4" PIPE	
						VERTICAL	HORIZONTAL
24	8" X 4" Tee	7	2	1	15+08/Lt.	9'	5'
25	8" X 4" Tee	5	B	1	15+68/Rt.	9.5'	67'
26	8" X 4" Tee	6	2	1	15+80/Lt.	9'	5'
27	8" X 4" Tee	5	2	1	16+52/Lt.	8.5'	5'
28	8" X 4" Tee	4	B	1	16+62/Rt.	9'	67'
29	4" Stub w/Riser	4	2	1	17+05.2/Lt.	9'	10' SE
30	8" X 4" Tee	3	B	1	17+58/Rt.	8.5'	67'
31	8" X 4" Tee	3	2	1	17+97/Lt.	8.5'	5'
32	8" X 4" Tee	2	B	1	18+48/Rt.	8.5'	67'
33	8" X 4" Tee	2	2	1	18+68/Rt. Lt.	8.5'	5'



SCALE:
 1" = 40' HORIZONTAL
 1" = 5' VERTICAL
 • = IRON



Sta. 19+13.3, Line 1
 Construct Standard
 Manhole. 1-8" Stub (E)
 Top Elev. = 1367.90
 Match Point

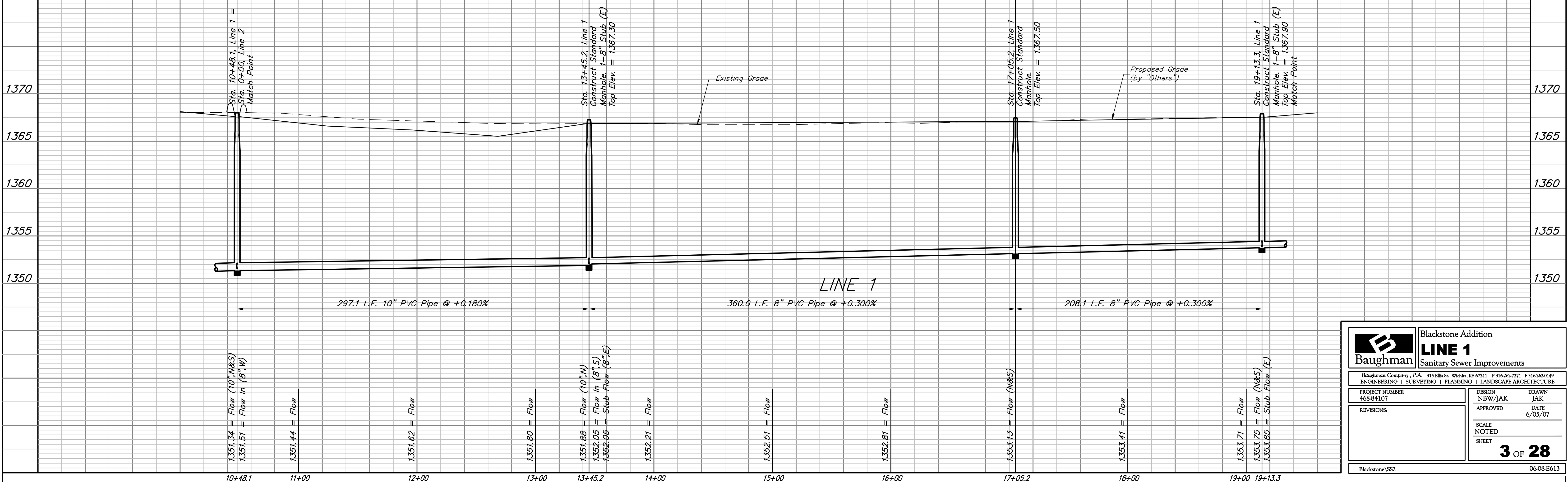
Sta. 10+48.1, Line 1 =
 Sta. 0+00, Line 2
 Match Point

Sta. 13+45.2, Line 1
 Construct Standard
 Manhole. 1-8" Stub (E)
 Top Elev. = 1367.30

Sta. 17+05.2, Line 1
 Construct Standard
 Manhole. 1-4" Stub
 w/ Riser (SE)
 Top Elev. = 1367.50

NOTE:
 Contractor shall Contact Greg
 Roy with Westar Energy @
 (785)575-8167 a minimum of
 48 hours prior to excavation
 across the Westar Easment

HLP ☐ = HIGHLINE POLE



		Blackstone Addition	
		LINE 1	
Sanitary Sewer Improvements		Baughman Company, P.A. 315 Ellis St. Wichita, KS 67211 P 316-262-7271 F 316-262-0149 ENGINEERING SURVEYING PLANNING LANDSCAPE ARCHITECTURE	
PROJECT NUMBER 468-84107	DESIGN NBW/JAK	DRAWN JAK	
REVISIONS:	APPROVED	DATE 6/05/07	
SCALE NOTED SHEET		3 OF 28	
Blackstone/SS2		06-08-E613	