

SCALE:  
1" = 20' HORIZONTAL  
1" = 5' VERTICAL

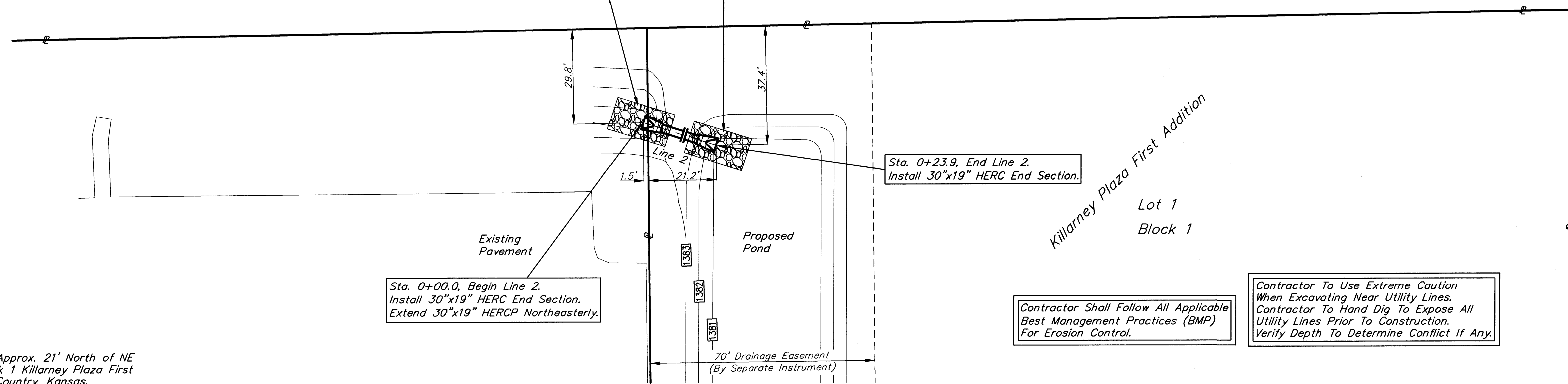
Install 20 Sq. Yards Of Light Stone Rip-Rap To Flow Line Grade Shown w/Grouted Toe Wall On South, East & West Edges. Toe Wall Shall Extend A Minimum Of 2' Below Filter Course. Install Geotextile Fabric Under Rip-Rap. Geotextile Fabric Shall Be Contech C-80NW Or Approved Equal. See Detail Sheet 2.

Install 20 Sq. Yards Of Light Stone Rip-Rap To Flow Line Grade Shown w/Grouted Toe Wall On North, East & West Edges. Toe Wall Shall Extend A Minimum Of 2' Below Filter Course. Install Geotextile Fabric Under Rip-Rap. Geotextile Fabric Shall Be Contech C-80NW Or Approved Equal. See Detail Sheet 2.

37th Rock Addition  
Lot 1  
Block 1

Killarney Plaza First Addition  
Lot 1  
Block 1

37th Street North



Sta. 0+00.0, Begin Line 2. Install 30"x19" HERC End Section. Extend 30"x19" HERCP Northeasterly.

Sta. 0+23.9, End Line 2. Install 30"x19" HERC End Section.

Contractor Shall Follow All Applicable Best Management Practices (BMP) For Erosion Control.

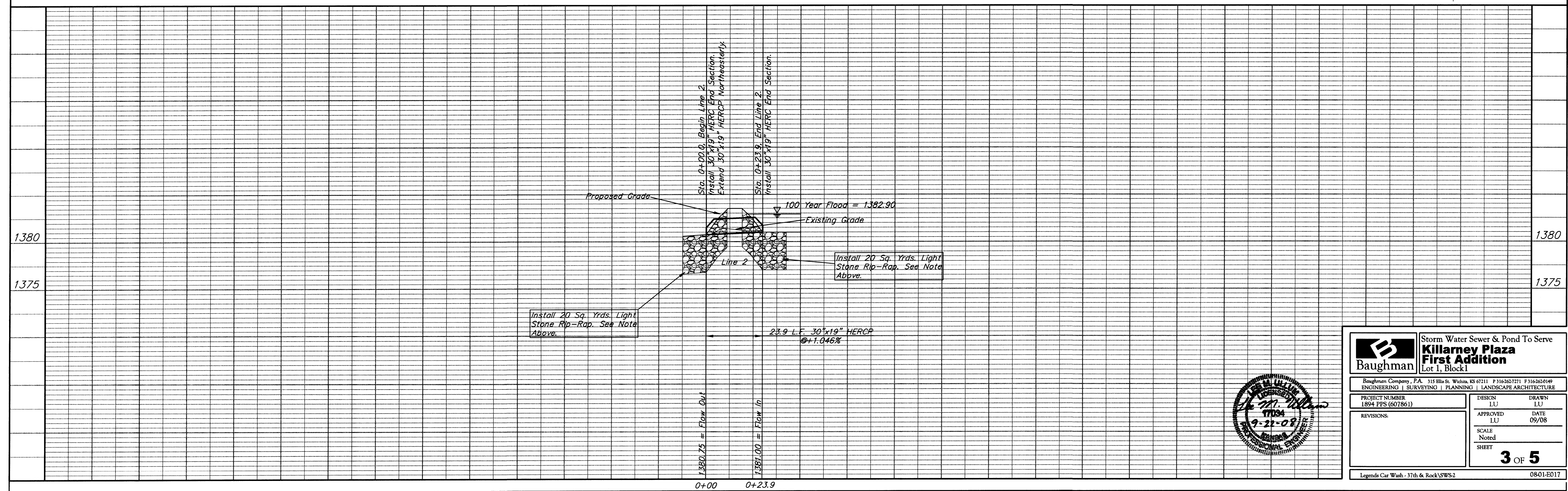
Contractor To Use Extreme Caution When Excavating Near Utility Lines. Contractor To Hand Dig To Expose All Utility Lines Prior To Construction. Verify Depth To Determine Conflict If Any.

**Bench Mark**

"□" Chiseled on Top of Curb Approx. 21' North of NE Property Corner of Lot 1, Block 1 Killarney Plaza First Addition to Wichita, Sedgwick Country, Kansas.

Elev. = 1389.58 NGVD 29

Rock Road



		Storm Water Sewer & Pond To Serve <b>Killarney Plaza First Addition</b> Lot 1, Block 1	
Baughman Company, P.A. 315 Ellis St. Wichita, KS 67211 P 316-262-7271 F 316-262-0149 ENGINEERING   SURVEYING   PLANNING   LANDSCAPE ARCHITECTURE			
PROJECT NUMBER 1894 PFS (607861)	DESIGN LU	DRAWN LU	DATE 09/08
REVISIONS:	APPROVED LU	SCALE Noted	SHEET <b>3 OF 5</b>
Legends Car Wash - 37th & Rock/SWS-2			08-01-E017

