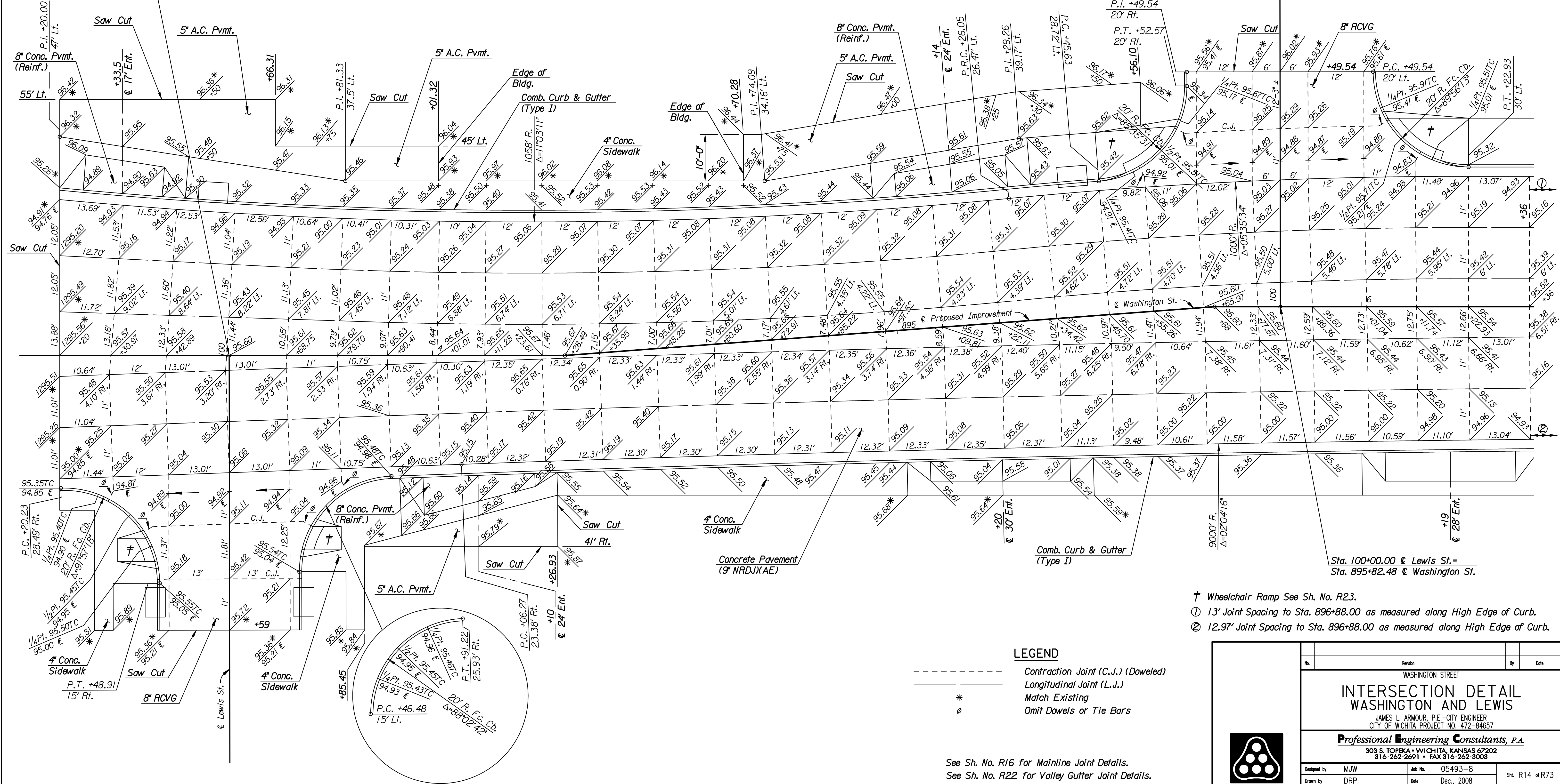


Scale: 1"=10'

Sta. 100+00.00 @ Lewis St.
Sta. 893+56.37 @ Washington St.

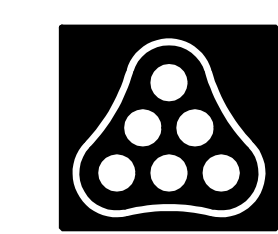


- † Wheelchair Ramp See Sh. No. R23.
- ① 13' Joint Spacing to Sta. 896+88.00 as measured along High Edge of Curb.
- ② 12.97' Joint Spacing to Sta. 896+88.00 as measured along High Edge of Curb.

LEGEND

| | |
|-----|------------------------------------|
| --- | Contraction Joint (C.J.) (Doweled) |
| --- | Longitudinal Joint (L.J.) |
| * | Match Existing |
| o | Omit Dowels or Tie Bars |

See Sh. No. R16 for Mainline Joint Details.
See Sh. No. R22 for Valley Gutter Joint Details.



| | | | |
|--|-----|---------|-----------------|
| Revision | | By | Date |
| WASHINGTON STREET | | | |
| INTERSECTION DETAIL | | | |
| WASHINGTON AND LEWIS | | | |
| JAMES L. ARMOUR, P.E.—CITY ENGINEER CITY OF WICHITA PROJECT NO. 472-84657 | | | |
| Professional Engineering Consultants, P.A. | | | |
| 303 S. TOPEKA • WICHITA, KANSAS 67202 316-262-2691 • FAX 316-262-3003 | | | |
| Designed by | MJW | Job No. | 05493-8 |
| Drawn by | DRP | Date | Dec., 2008 |
| | | | Sht. R14 of R73 |

Plotted By: gkl
 Date: 12/29/2008 4:27:41PM
 FILE: I:\2005\05493-8\Intersection\05493-008-Int-dtl-Lewis.dgn