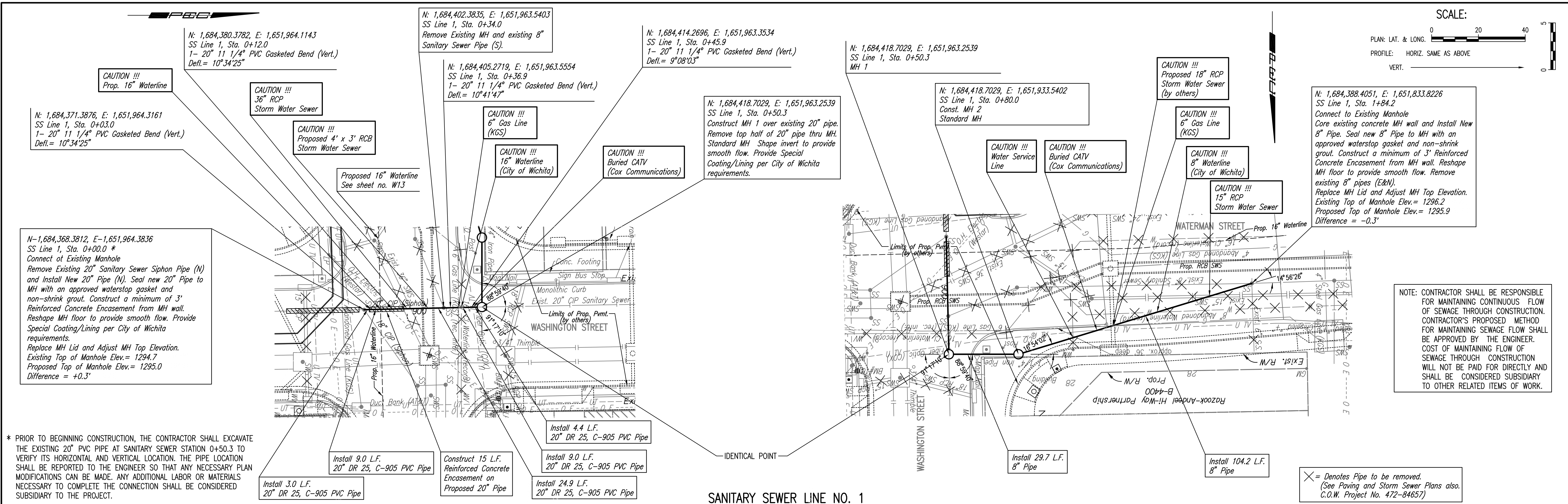


PLAN	CHECKED	CHECKED
BY		
DATE		

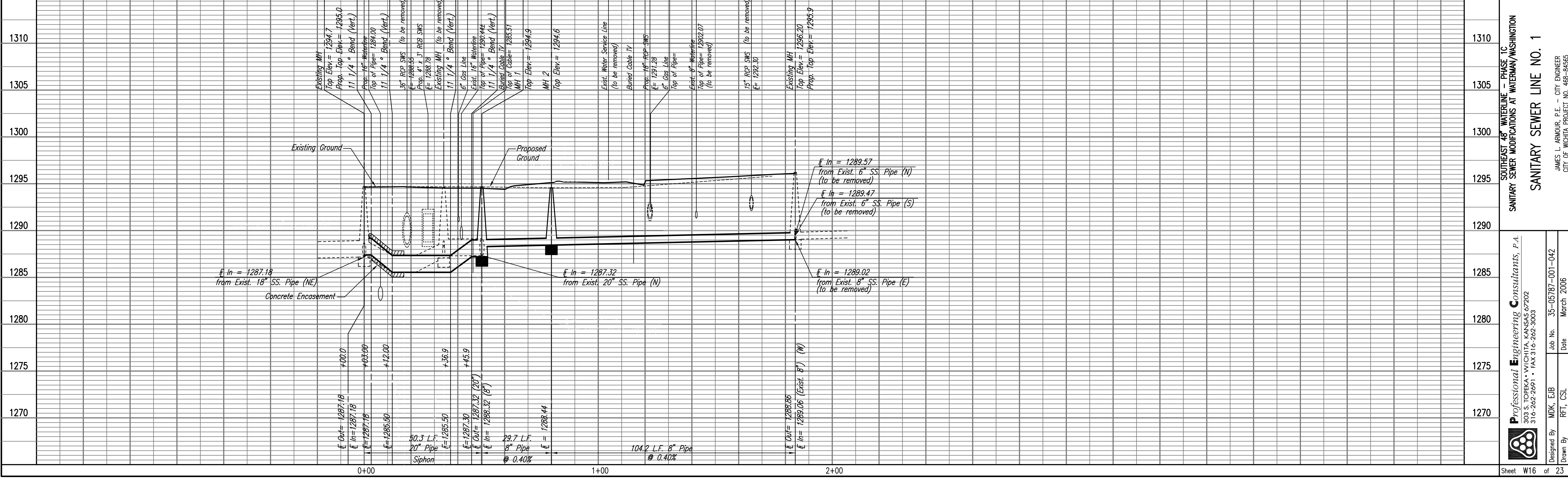
PROFILE	CHECKED	CHECKED
BY		
DATE		

Drawn 12-31-2008 4:36:16 PM by CSI
 Plot Scale 1:20 01-02-2009 10:51:58 AM by MAC
 G:\2005\05787\001\Phase C\05787-001-PhaseC-C-SSPP01



* PRIOR TO BEGINNING CONSTRUCTION, THE CONTRACTOR SHALL EXCAVATE THE EXISTING 20" PVC PIPE AT SANITARY SEWER STATION 0+50.3 TO VERIFY ITS HORIZONTAL AND VERTICAL LOCATION. THE PIPE LOCATION SHALL BE REPORTED TO THE ENGINEER SO THAT ANY NECESSARY PLAN MODIFICATIONS CAN BE MADE. ANY ADDITIONAL LABOR OR MATERIALS NECESSARY TO COMPLETE THE CONNECTION SHALL BE CONSIDERED SUBSIDIARY TO THE PROJECT.

SANITARY SEWER LINE NO. 1



Professional Engineering Consultants, P.A.
 603 S. TOPICKA AVENUE, WICHITA, KANSAS 67202
 316-262-2691 • FAX 316-262-3003

Professional Engineering Consultants, P.A.
 SOUTH EAST 48" WATERLINE - PHASE 1C
 SANITARY SEWER MODIFICATIONS AT WATERMAN/WASHINGTON
 SANITARY SEWER LINE NO. 1

Designed By MDK, EJB
 Drawn By RFT, CSL

Job No. 35-05787-001-042
 Date March 2006

JAMES L. ARMOUR, P.E. - CITY ENGINEER
 CITY OF WICHITA PROJECT NO. 468-84565

Sheet W16 of 23