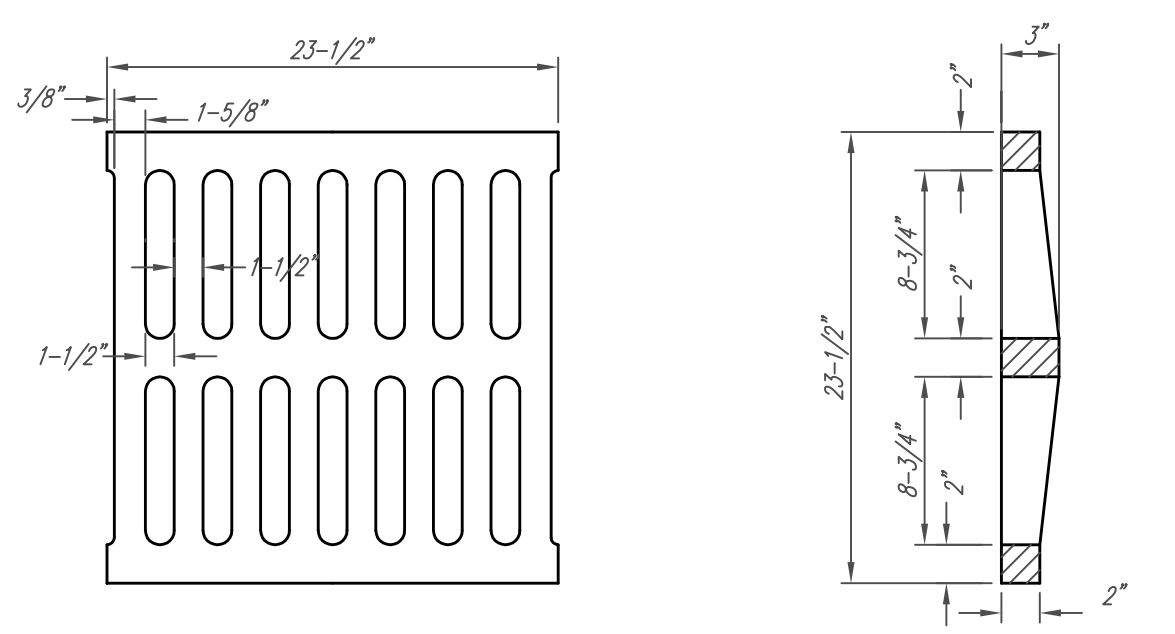
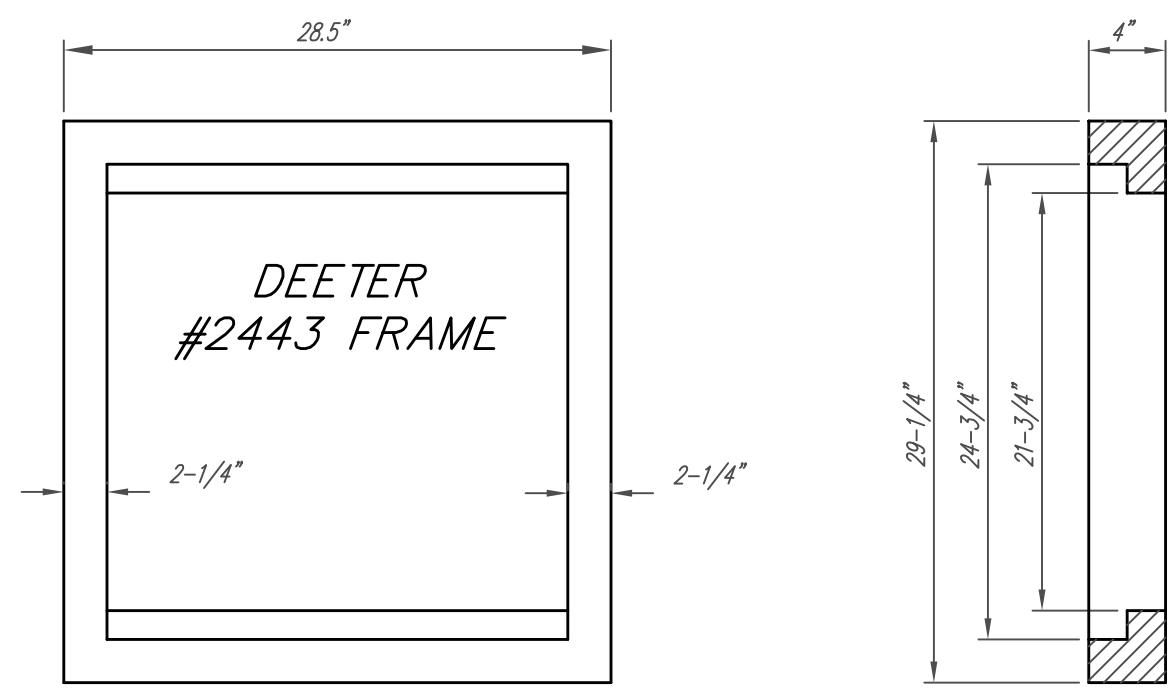
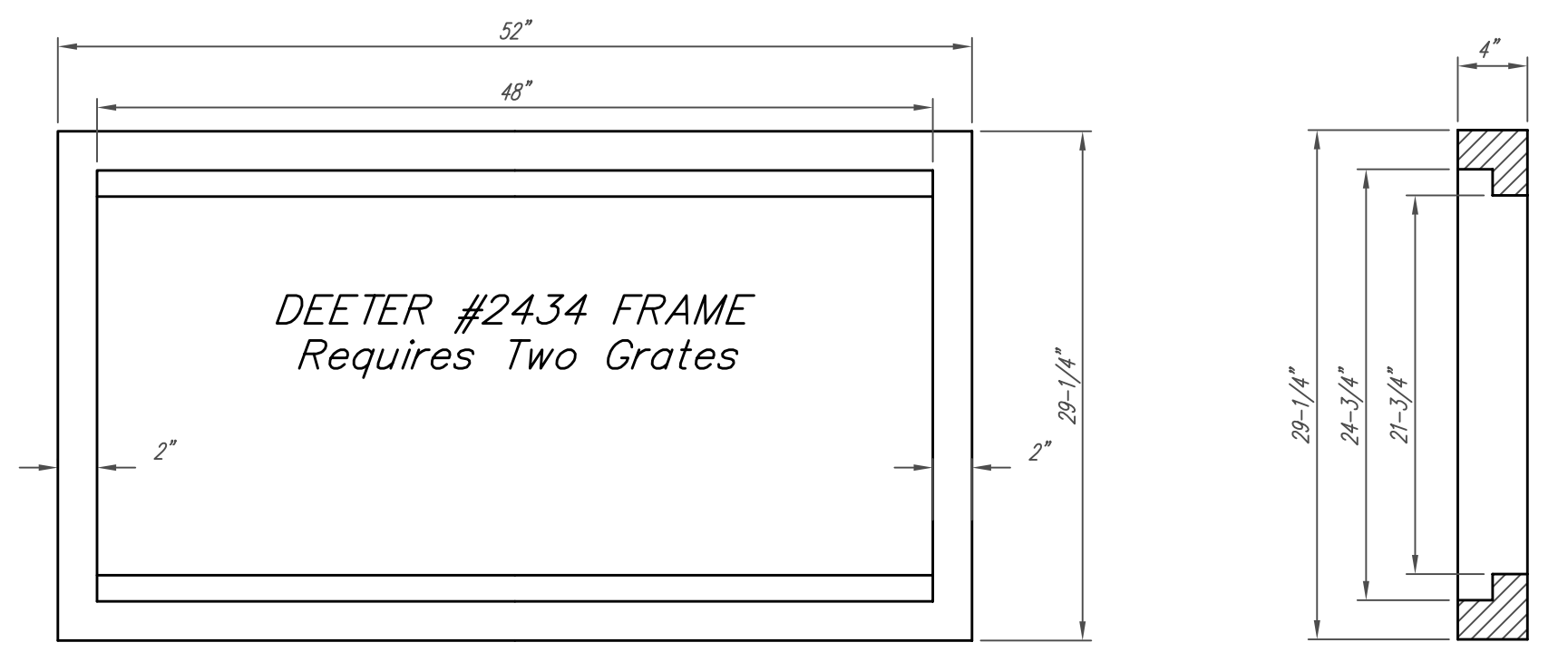


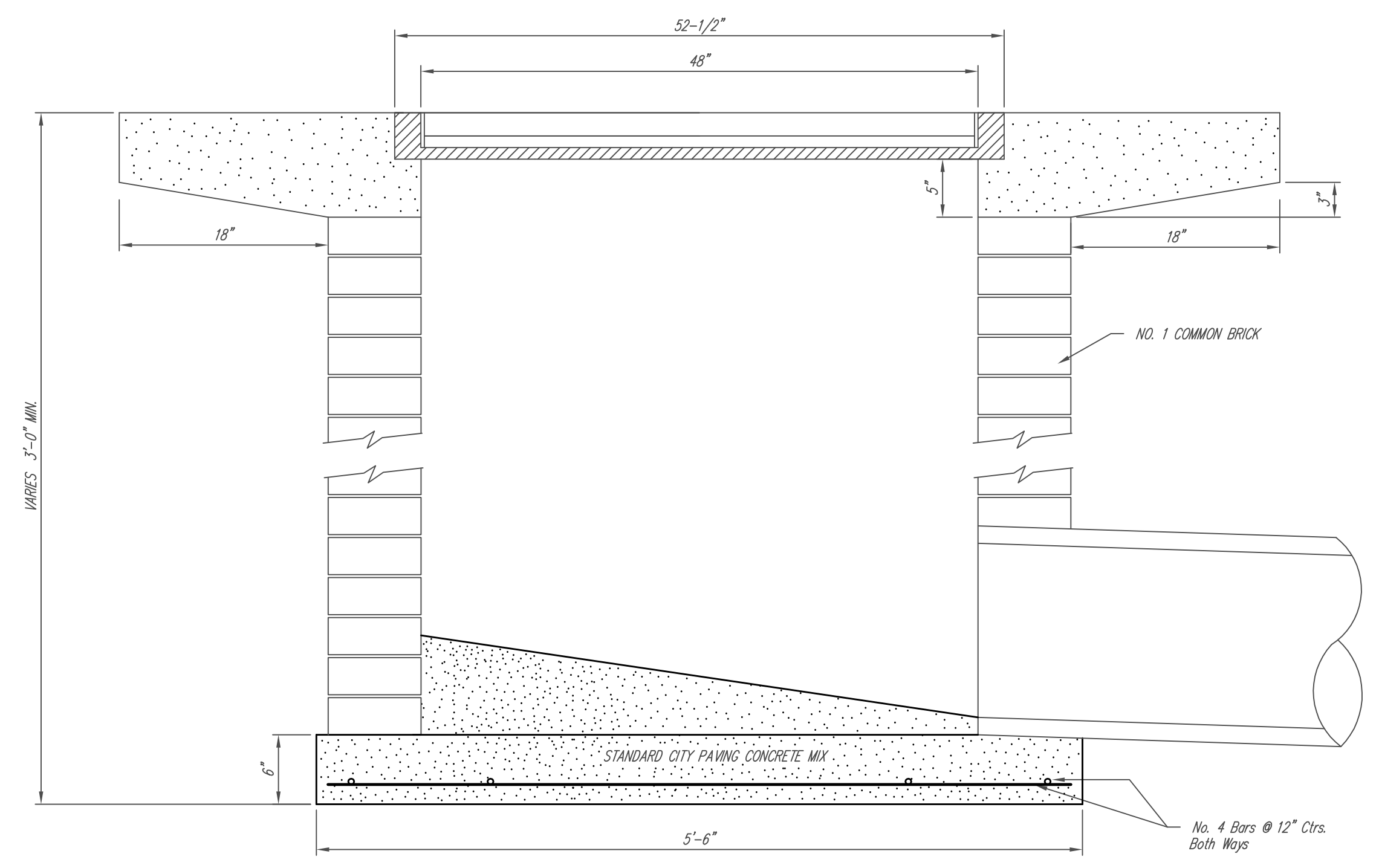
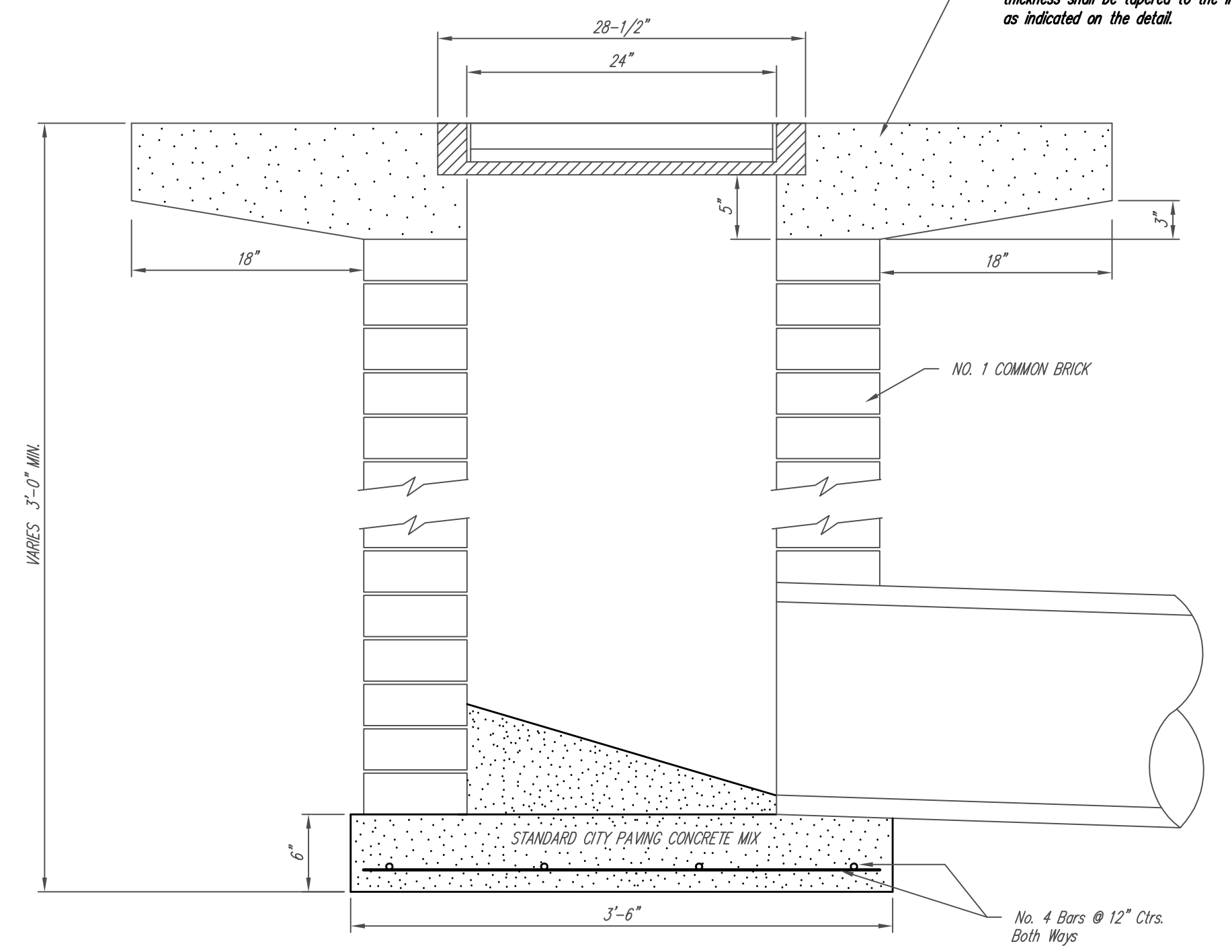
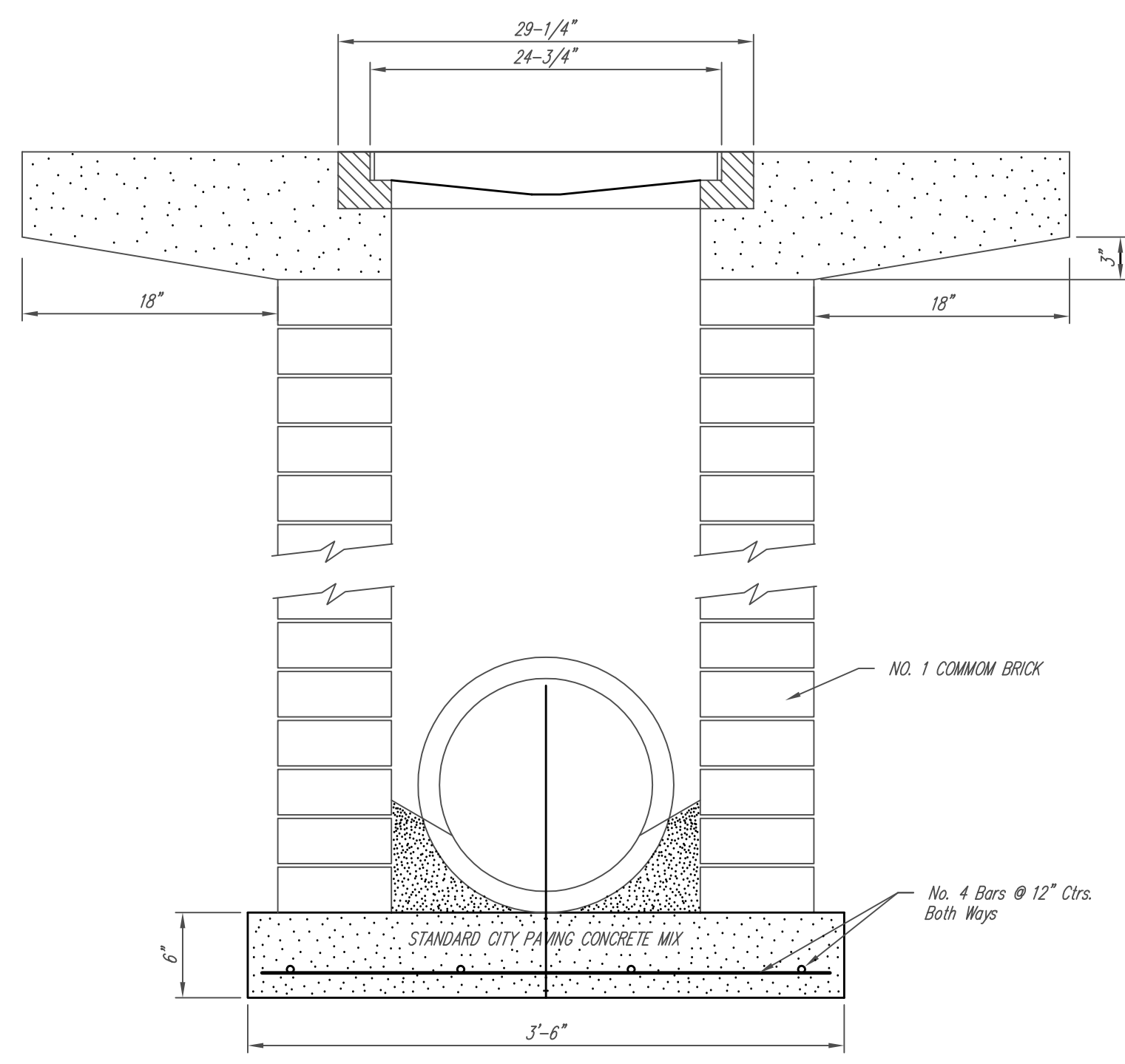
Note: Concrete apron shall be constructed around the inlet when inlet is located in an unpaved area. Where the inlet is adjacent to pavement, the pavement thickness shall be tapered to the inlet in 18 inches as indicated on the detail.



DEETER #2433 GRATE
24" x 24" Frame and Grate Detail



Double 24" x 24" Frame Detail



| | | |
|---|--|------------------------------|
| <p>THE CITY OF WICHITA CITY ENGINEER'S OFFICE CITY HALL - SEVENTH FLOOR 455 NORTH MAIN STREET WICHITA, KANSAS 67202 (316) 268-4501 (316) 268-4114 FAX</p> | <p>DROP INLET 2' X 2' / 2' X 4'</p> | |
| | <p>JAMES ARMOUR P.E. - CITY ENGINEER</p> | |
| | <p>PROJECT NUMBER XXX-XXXX</p> | <p>INDEX CODE XXXXXX</p> |
| | <p>DATE JUNE 08</p> | <p>SHEET 4 OF 4</p> |