

PRIVATE STORM SEWER IMPROVEMENTS

TO SERVE

WICHITA ANIMAL CARE CAMPUS

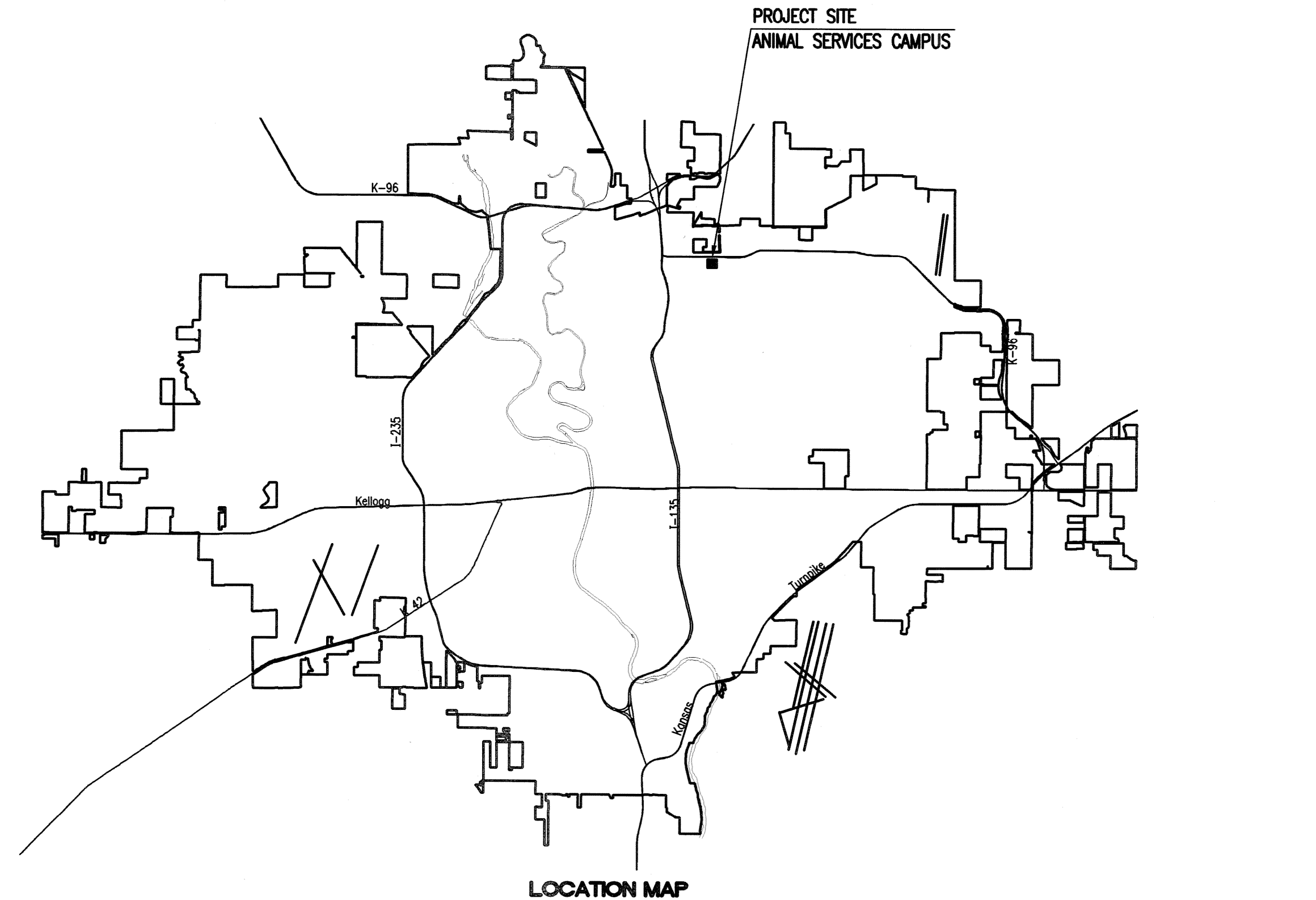
PRIVATE PROJECT NO. 1837 PPS (607861)

CITY OF WICHITA, KANSAS

JAMES L. ARMOUR, P.E. - CITY ENGINEER

INDEX OF SHEETS

SHEET NO. CV2.1	TITLE SHEET
SHEET NO. CV2.2	KEY MAP AND GENERAL NOTES
SHEET NO. CV2.3-CV2.7	SWS PLAN/PROFILE
SHEET NO. CV2.8	STANDARD TYPE "P" MANHOLE DETAILS
SHEET NO. CV2.9	FRAME & COVER DETAILS
SHEET NO. CV2.10	TYPE 1 CURB INLET DETAILS
SHEET NO. CV2.11	AREA INLET DETAILS
SHEET NO. CV2.12	HEADWALL DETAILS
SHEET NO. CV2.13	MAIN DETENTION POND GRADING
SHEET NO. CV2.14	DETENTION POND A & B GRADING
SHEET NO. CV2.15	DETENTION POND C GRADING
SHEET NO. CV4.1-CV4.3	SOIL EROSION BMP DETAILS
SHEET NO. CV5.1	PLAT



APPROVED AS NOTED
By CITY ENGINEER OF WICHITA

Sanitary Sewers _____

Storm Sewers VRH 1/18/08

Driveway Approaches _____

Paving _____

NOTE TO CONTRACTOR

INSPECTION AND TESTING FOR THIS PROJECT IS TO BE PROVIDED BY A LICENSED CONSULTING ENGINEERING FIRM CONTRACTED BY THE OWNER/DEVELOPER. SAID INSPECTION TO BE IN ACCORDANCE WITH THE CITY OF WICHITA STANDARD CONSTRUCTION ENGINEERING PRACTICES AND CERTIFIED BY A LICENSED PROFESSIONAL ENGINEER. NO WORK SHALL BE PERFORMED IN DEDICATED EASEMENTS OR PUBLIC RIGHT-OF-WAY BY THE CONTRACTOR UNTIL SUCH INSPECTION IS ARRANGED FOR AND REQUIRED BONDS HAVE BEEN SUBMITTED TO AND APPROVED BY THE CITY. NOR SHALL ANY WORK BE COMMENCED IN DEDICATED EASEMENTS OR PUBLIC RIGHT-OF-WAY WITHOUT WRITTEN AUTHORIZATION BY THE CITY ENGINEER. IMPROVEMENTS PERFORMED UNDER THIS PROJECT SHALL NOT BE ACCEPTED BY THE CITY UNTIL ALL APPLICABLE DOCUMENTATION HAS BEEN SUBMITTED TO THE CITY ENGINEER. THIS MAY INCLUDE: RECORD DRAWINGS, INSPECTION LOGS, TEST DOCUMENTATION, TV TAPES, AND A CERTIFICATE OF COMPLETION. THE ABOVE SHALL BE PERFORMED BY THE CONSULTING FIRM CONTRACTED TO INSPECT THIS PROJECT.

As Built:
Contractor: Mies Construction
Inspector: Pat Hayes, CED
pdf's by: JDT, CED, 7-22-08

JANUARY 2008
PLANS PREPARED BY
PROFESSIONAL ENGINEERING CONSULTANTS, P.A.
ENGINEERS
WICHITA, KANSAS