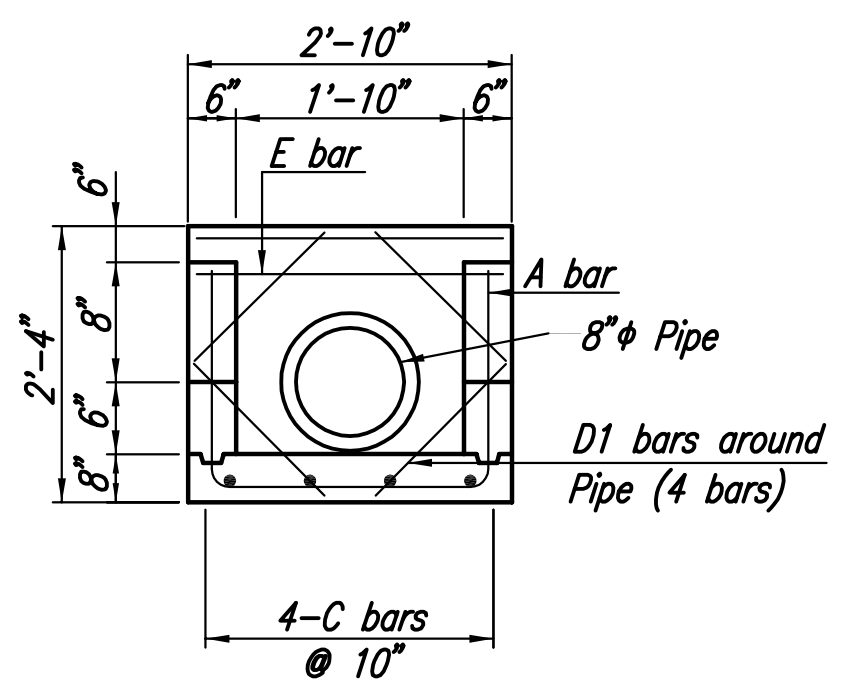
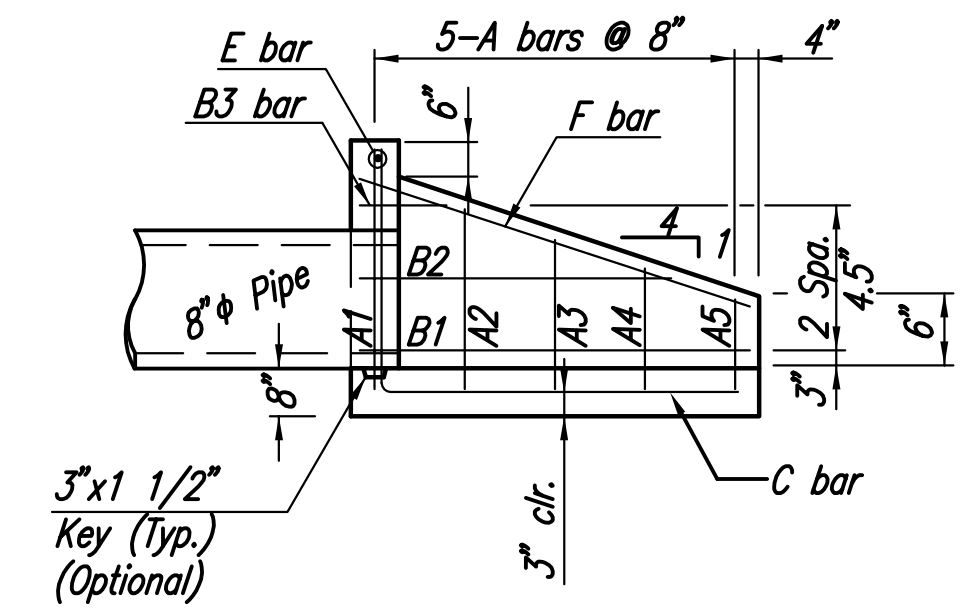


PLAN



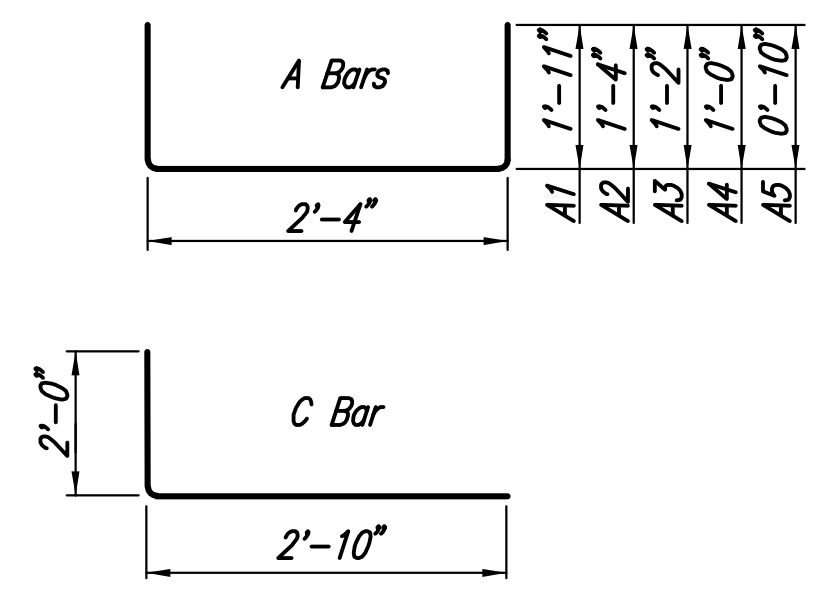
FRONT



SECTION

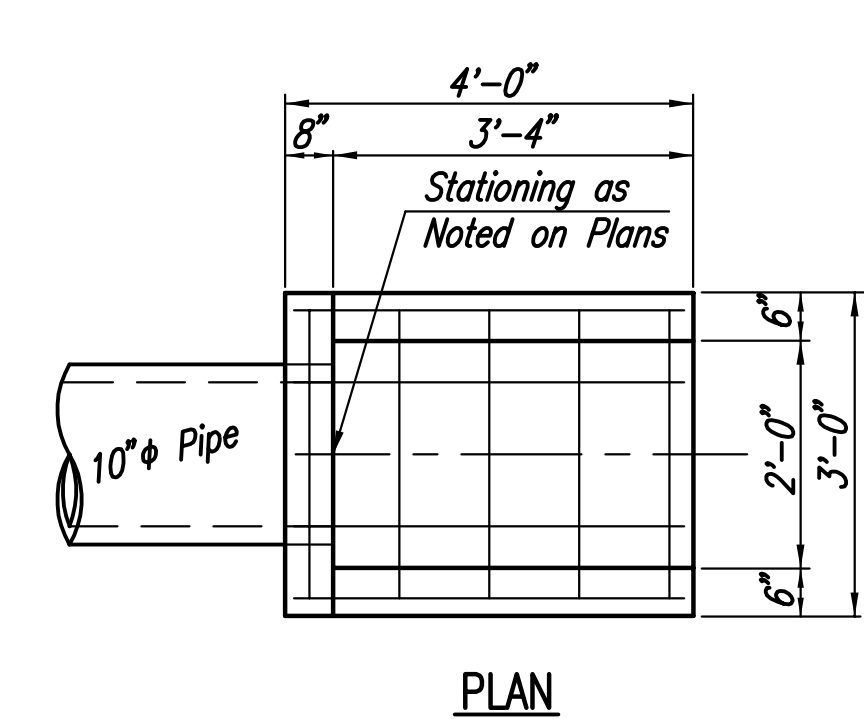
RE-BAR SCHEDULE				
Mark	Shape	No.	Length	Weight
A1		1	6'-2"	4.12
A2		1	5'-0"	3.34
A3		1	4'-8"	3.12
A4		1	4'-4"	2.89
A5		1	4'-0"	2.67
B1		2	3'-0"	4.01
B2		2	2'-6"	3.34
B3		2	1'-0"	1.34
C		4	4'-10"	12.91
D1		4	1'-2"	3.12
E		1	2'-6"	1.67
F		2	3'-1"	4.12
Total Rebars			46.65	Lbs.
Concrete			0.43	C.Y.

All Concrete Reinforcement to be #4 bars.

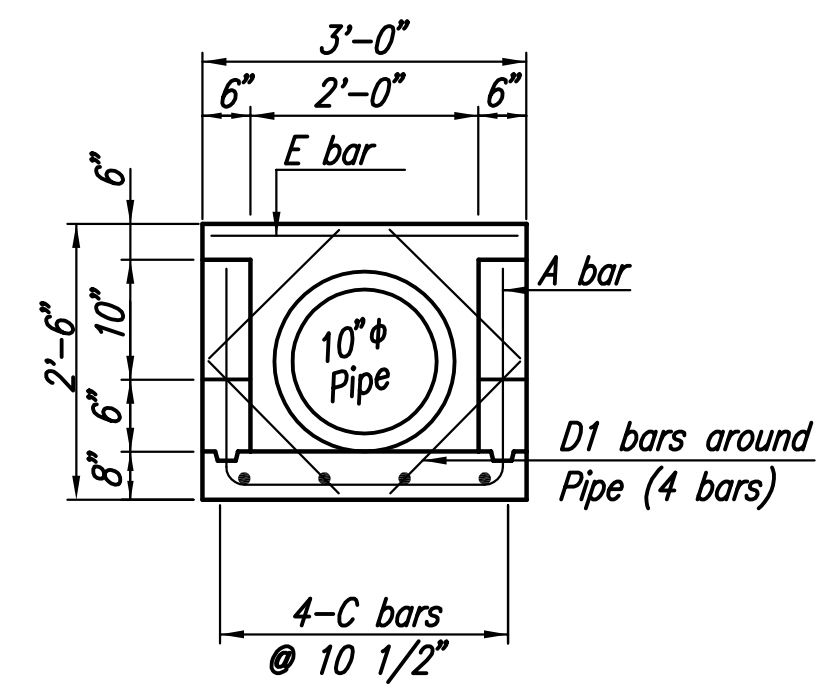


BENDING DIAGRAMS

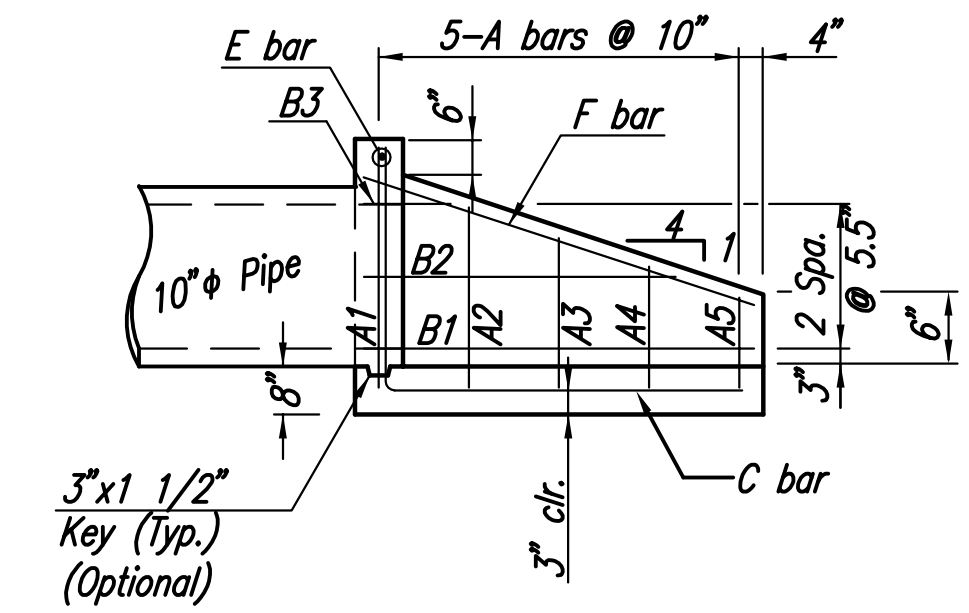
8" HEADWALL



PLAN



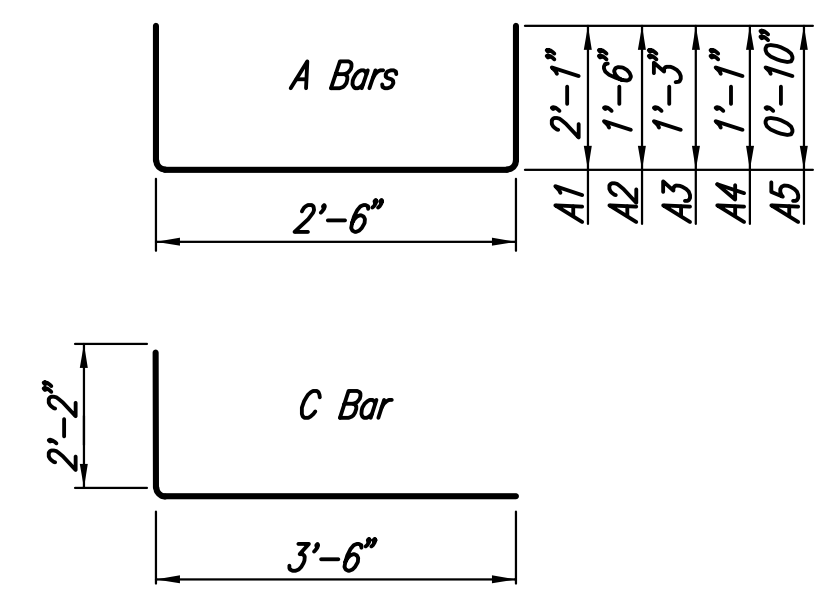
FRONT



SECTION

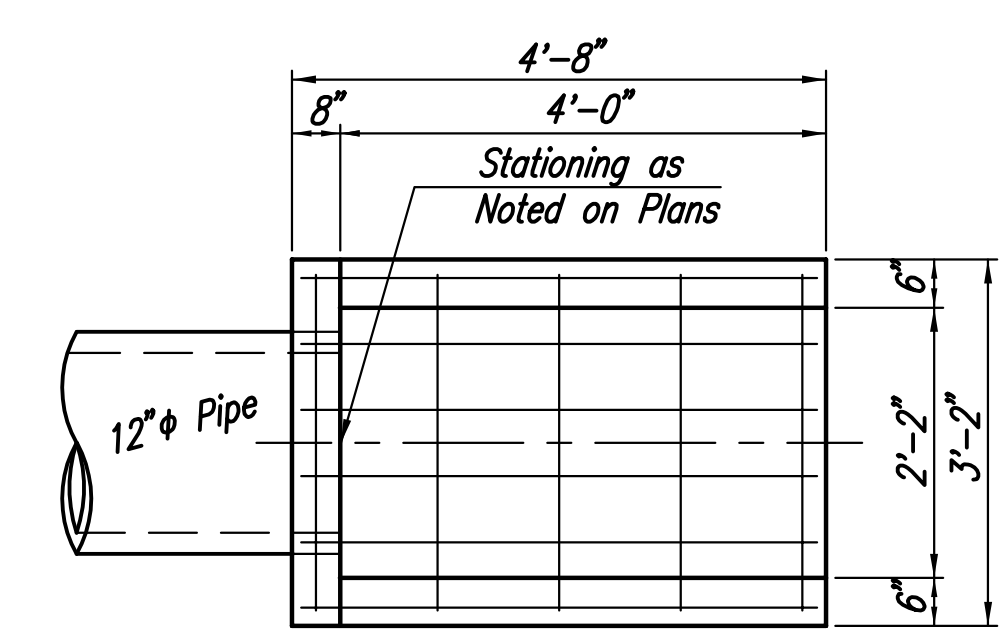
RE-BAR SCHEDULE				
Mark	Shape	No.	Length	Weight
A1		1	6'-8"	4.45
A2		1	5'-6"	3.67
A3		1	5'-0"	3.34
A4		1	4'-8"	3.12
A5		1	4'-2"	2.78
B1		2	3'-8"	4.90
B2		2	2'-10"	3.79
B3		2	1'-0"	1.34
C		4	5'-8"	15.14
D1		4	1'-4"	3.56
E		1	2'-8"	1.78
F		2	3'-9"	5.01
Total Rebars			52.88	Lbs.
Concrete			0.55	C.Y.

All Concrete Reinforcement to be #4 bars.

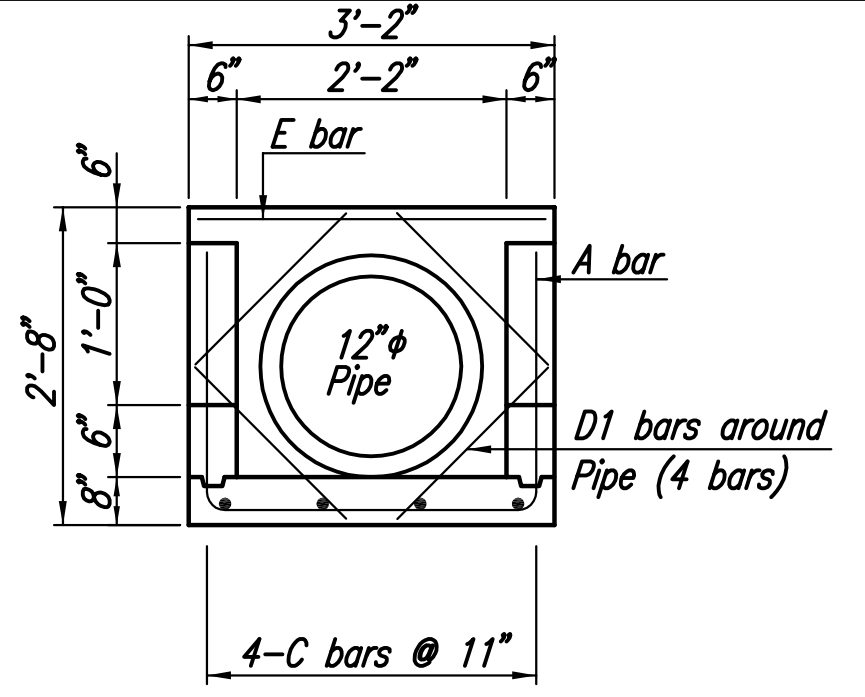


BENDING DIAGRAMS

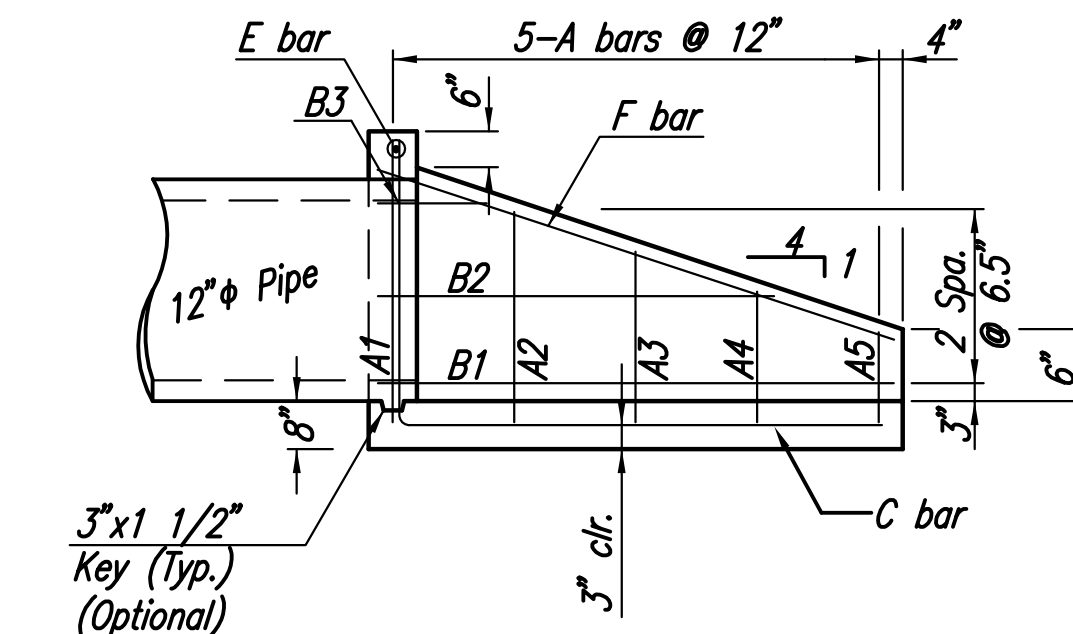
10" HEADWALL



PLAN



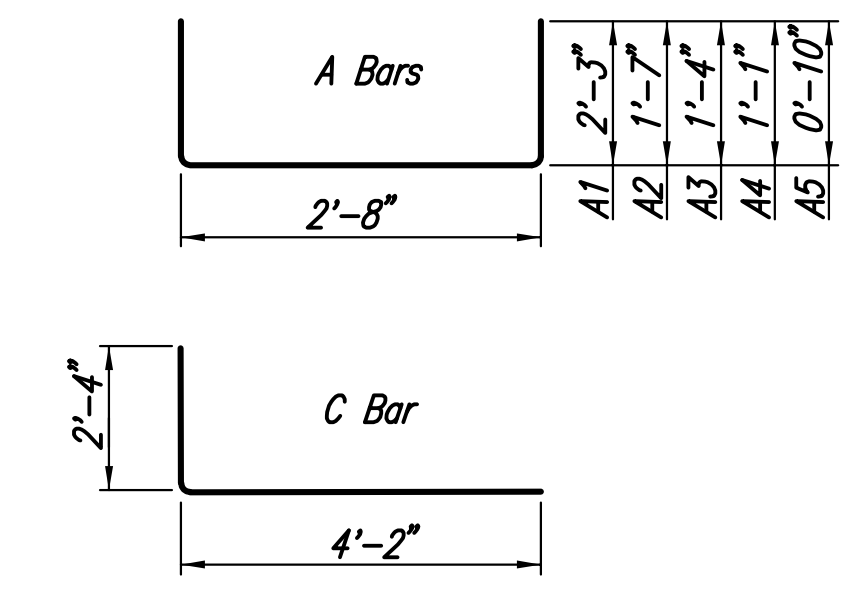
FRONT



SECTION

RE-BAR SCHEDULE				
Mark	Shape	No.	Length	Weight
A1		1	7'-2"	4.79
A2		1	5'-10"	3.90
A3		1	5'-4"	3.56
A4		1	4'-10"	3.23
A5		1	4'-4"	2.89
B1		2	4'-4"	5.79
B2		2	3'-2"	4.23
B3		2	1'-0"	1.34
C		4	6'-6"	17.37
D1		4	1'-6"	4.01
E		1	2'-10"	1.89
F		2	4'-6"	6.01
Total Rebars			59.01	Lbs.
Concrete			0.67	C.Y.

All Concrete Reinforcement to be #4 bars.



BENDING DIAGRAMS

12" HEADWALL

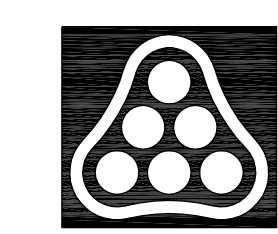
CONCRETE HEADWALL NOTES

Concrete: Bevel all exposed edges with a 3/4" triangular molding or finish with an approved edging tool. Concrete shall be as per City of Wichita Standard Specifications for concrete paving mix except that it shall have a minimum 28 day compressive strength of 4,000 p.s.i. All pipes shall be flush cut prior to being cast into the headwall.

Reinforcing Steel: All dimensions relative to reinforcing steel are to centerline of bar unless otherwise noted. All clearances shall be 2" unless otherwise noted. All reinforcing steel shall conform to A.S.T.M. designation A615 Grade 60 and shall be epoxy coated.

Payment: A deduction in concrete quantities has been made for the pipe opening. Headwalls shall be paid for at the unit price bid per each by size in place including concrete, reinforcing steel, excavation and all other miscellaneous materials, labor, tools, equipment, and incidentals necessary to complete the work. Quantities shown are for information only.

Scaled 01-16-2008 8:47:16 PM by DWH
 Plot Scale 1:1 01-22-2008 10:27:06 AM
 Q:\2005\05028\004\05028-004-CV2-12-Headwall
 by AEE



No.	Revision	By	Date
ANIMAL SERVICES CAMPUS KANSAS HUMANE SOCIETY CONCRETE HEADWALL DETAILS JAMES L. ARMOUR, P.E.—CITY ENGINEER CITY OF WICHITA PRIVATE PROJECT NO. 1837 PPS (607861) Professional Engineering Consultants, P.A. 303 S. TOPEKA • WICHITA, KANSAS 67202 316-262-2691 • FAX 316-262-3003			
Designed by	DWH	Job No.	35-05028-004
Drawn by	SAW	Date	November 2007
			CV2.12