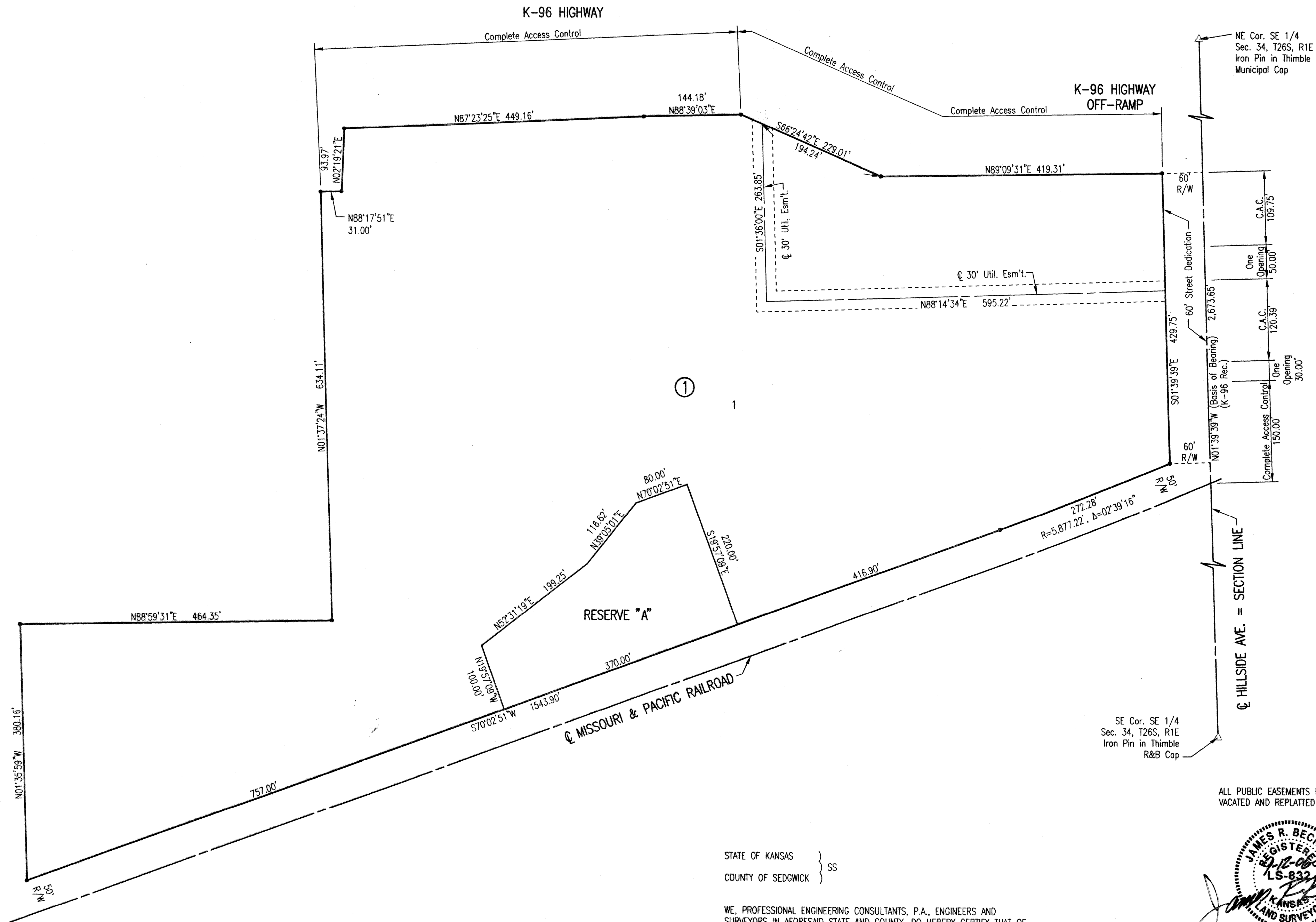


# ANIMAL SERVICES CAMPUS

## AN ADDITION TO WICHITA, SEDGWICK COUNTY, KANSAS



• = 1/2" REBAR W/PEC CAP UNLESS OTHERWISE NOTED  
 △ = SECTION CORNER  
 C.A.C. = COMPLETE ACCESS CONTROL

- BENCHMARKS:** BM#999
- BM #101 - Found Railroad Spike in W face of high-line power pole on E side of Hillside Avenue near #3320 N. Hillside entrance drive  
MSL Elev. = 1344.795
  - BM #102 - Set "T" Post 27.5' S of center entrance drive and 36.20' E of E face of Animal Shelter Building  
MSL Elev. = 1338.81
  - BM #103 - Set "T" Post 10' S of CP#1003, NW property corner  
MSL Elev. = 1352.125
  - BM #104 - Set "T" Post 13'± E of W line and 140'± N of SW property corner  
MSL Elev. = 1335.465
  - BM #105 - Set "T" Post 57'± N of fence line along S property corner line 22' S of Haul Road 275'± WNW of property corner #102  
MSL Elev. = 1338.32

Sedgwick County, Bill Meek  
 Register of Deeds  
 DOC #/FLM-PG: 28880111  
 Receipt #: 1655079  
 Pages Recorded: 4  
 Cadastre Initials: MLH  
 Date Recorded: 5/7/2007 2:40:00 PM  
 Recording Fee: \$20.00

ALL PUBLIC EASEMENTS LYING WITHIN THE ABOVE DESCRIBED TRACT OF LAND ARE HEREBY VACATED AND REPLATTED BY VIRTUE OF KSA 12-512(b) AMENDED.

JAMES R. BECKETT, R.L.S. NO. 832  
 PROFESSIONAL ENGINEERING CONSULTANTS, P.A.

STATE OF KANSAS }  
 COUNTY OF SEDGWICK } SS

WE, PROFESSIONAL ENGINEERING CONSULTANTS, P.A., ENGINEERS AND SURVEYORS IN AFORESAID STATE AND COUNTY, DO HEREBY CERTIFY THAT ON THIS 12TH DAY OF SEPTEMBER, 2006, WE HAVE SURVEYED

AND PLATTED ANIMAL SERVICES CAMPUS, AN ADDITION TO WICHITA, SEDGWICK COUNTY, KANSAS, INTO A LOT, BLOCK, AND RESERVE, THE SAME BEING DESCRIBED AS FOLLOWS:

ALL THAT PART OF LOT 1, AND LOT 2, NORTHEAST SUBSTATION ADDITION, WICHITA, SEDGWICK COUNTY, KANSAS, LYING SOUTH OF THE SOUTH RIGHT-OF-WAY OF K-96 BYPASS; TOGETHER WITH A TRACT OF LAND LOCATED IN THE SOUTHEAST QUARTER OF SECTION 34, TOWNSHIP 26 SOUTH, RANGE 1 EAST OF THE SIXTH PRINCIPAL MERIDIAN, SEDGWICK COUNTY, KANSAS, DESCRIBED AS FOLLOWS:

THAT PORTION OF THE SOUTHEAST QUARTER OF SECTION 34, TOWNSHIP 26, RANGE 1 EAST, OF THE 6TH PRINCIPAL MERIDIAN, SEDGWICK COUNTY, KANSAS, BEGINNING AT THE INTERSECTION OF THE WESTERLY LINE OF HILLSIDE AVENUE, AS LOCATED ON JANUARY 5, 1981, WITH THE NORTHERLY LINE OF THE RIGHT-OF-WAY OF SAINT LOUIS AND FORT SCOTT AND WICHITA RAILROAD CO. RECORDED IN DEED BOOK 35, PAGE 159; THENCE NORTHERLY ALONG THE WESTERLY LINE OF HILLSIDE AVENUE, 250 FEET; THENCE WESTERLY AND PARALLEL WITH THE NORTHERLY LINE OF SAID NORTHEAST QUARTER, 600 FEET; THENCE SOUTHERLY ON A LINE AND PARALLEL WITH HILLSIDE AVENUE, TO THE INTERSECTION OF SUCH LINE WITH THE NORTHERLY LINE OF SAID RAILROAD RIGHT-OF-WAY, THENCE EASTERLY ALONG SAID NORTHERLY LINE OF SAID RAILROAD RIGHT-OF-WAY TO THE POINT OF BEGINNING, EXCEPT THAT PORTION DEDICATED FOR STREET PURPOSES ON FILM 1015, PAGE 517.

ALL ABUTTER'S RIGHT OF ACCESS TO AND FROM HILLSIDE AVE. OVER AND ACROSS THE EAST PROPERTY LINE IS HEREBY GRANTED TO THE CITY OF WICHITA, PROVIDED HOWEVER THAT THERE SHALL BE ACCESS TO HILLSIDE AVE. AT TWO LOCATIONS AS SHOWN.

THE STREETS ARE HEREBY DEDICATED TO AND FOR THE USE OF THE PUBLIC.

EASEMENTS FOR THE CONSTRUCTION AND MAINTENANCE OF PUBLIC UTILITIES ARE HEREBY GRANTED.

A DRAINAGE PLAN HAS BEEN APPROVED FOR THIS PLAT. ALL DRAINAGE EASEMENTS, RIGHTS-OF-WAY, OR RESERVES SHALL REMAIN AT ESTABLISHED GRADES AND UNOBSTRUCTED TO ALLOW FOR THE CONVEYANCE OF STORM WATER, UNLESS MODIFIED WITH THE APPROVAL OF THE CITY ENGINEER.

RESERVE "A" IS HEREBY PLATTED FOR DRAINAGE, LANDSCAPING, RECREATIONAL USES, AND SIDEWALKS. RESERVE "A" SHALL BE OWNED AND MAINTAINED BY AN OWNERS ASSOCIATION TO BE FORMED WITHIN ANIMAL SERVICES CAMPUS.

KNOW ALL MEN BY THESE PRESENTS THAT WE, THE UNDERSIGNED PROPERTY OWNERS OF THE LAND AS ABOVE SET FORTH IN THE SURVEYOR'S CERTIFICATE, HAVE CAUSED THE LAND TO BE SURVEYED AND PLATTED INTO A LOT, BLOCK, AND RESERVE, THE SAME TO BE KNOWN AS ANIMAL SERVICES CAMPUS, AN ADDITION TO WICHITA, SEDGWICK COUNTY, KANSAS.

OWNER:  
 THE CITY OF WICHITA, KANSAS, MUNICIPAL CORPORATION  
  
 CARLOS MAYANS, MAYOR

STATE OF KANSAS }  
 COUNTY OF SEDGWICK } SS

THIS INSTRUMENT WAS ACKNOWLEDGED BEFORE ME ON THIS 2 DAY OF March, 2007, BY CARLOS MAYANS, (TITLE) MAYOR

JANIS EDWARDS, NOTARY PUBLIC

MY APPOINTMENT EXPIRES: 12-19-2010

THIS PLAT IS APPROVED AND ALL DEDICATIONS SHOWN HEREON, IF ANY ARE ACCEPTED BY THE CITY COUNCIL OF THE CITY OF WICHITA, KANSAS, THIS

1 DAY OF MARCH, 2006/ 7

CARLOS MAYANS, MAYOR  
  
 KAREN SUBLETT, CITY CLERK

ENTERED ON TRANSFER RECORD THIS 7th DAY OF MAY, 2007

DON BRACE, COUNTY CLERK

THIS IS TO CERTIFY THAT THIS INSTRUMENT WAS FILED FOR RECORD IN THE REGISTER OF DEEDS OFFICE AT 2:40:00 PM, ON THE Seventh DAY OF May, 2007

BILL MEEK, REGISTER OF DEEDS  
  
 TONYA BUCKINCHAR, DEPUTY

STATE OF KANSAS }  
 COUNTY OF SEDGWICK } SS

THIS PLAT OF ANIMAL SERVICES CAMPUS HAS BEEN SUBMITTED TO AND APPROVED BY THE WICHITA-SEDGWICK COUNTY METROPOLITAN PLANNING COMMISSION, WICHITA, KANSAS.

DATED THIS 17th DAY OF September, 2006.

WICHITA-SEDGWICK COUNTY METROPOLITAN AREA PLANNING COMMISSION  
  
 HAROLD L. WARNER, JR., CHAIR  
  
 JOHN L. SCHLEGEL, SECRETARY

REVIEWED IN ACCORDANCE WITH K.S.A. 58-2005 ON THIS 18th DAY OF September, 2006.

TRICIA L. ROBELLO, LS #1246  
 DEPUTY COUNTY SURVEYOR  
 SEDGWICK COUNTY KANSAS