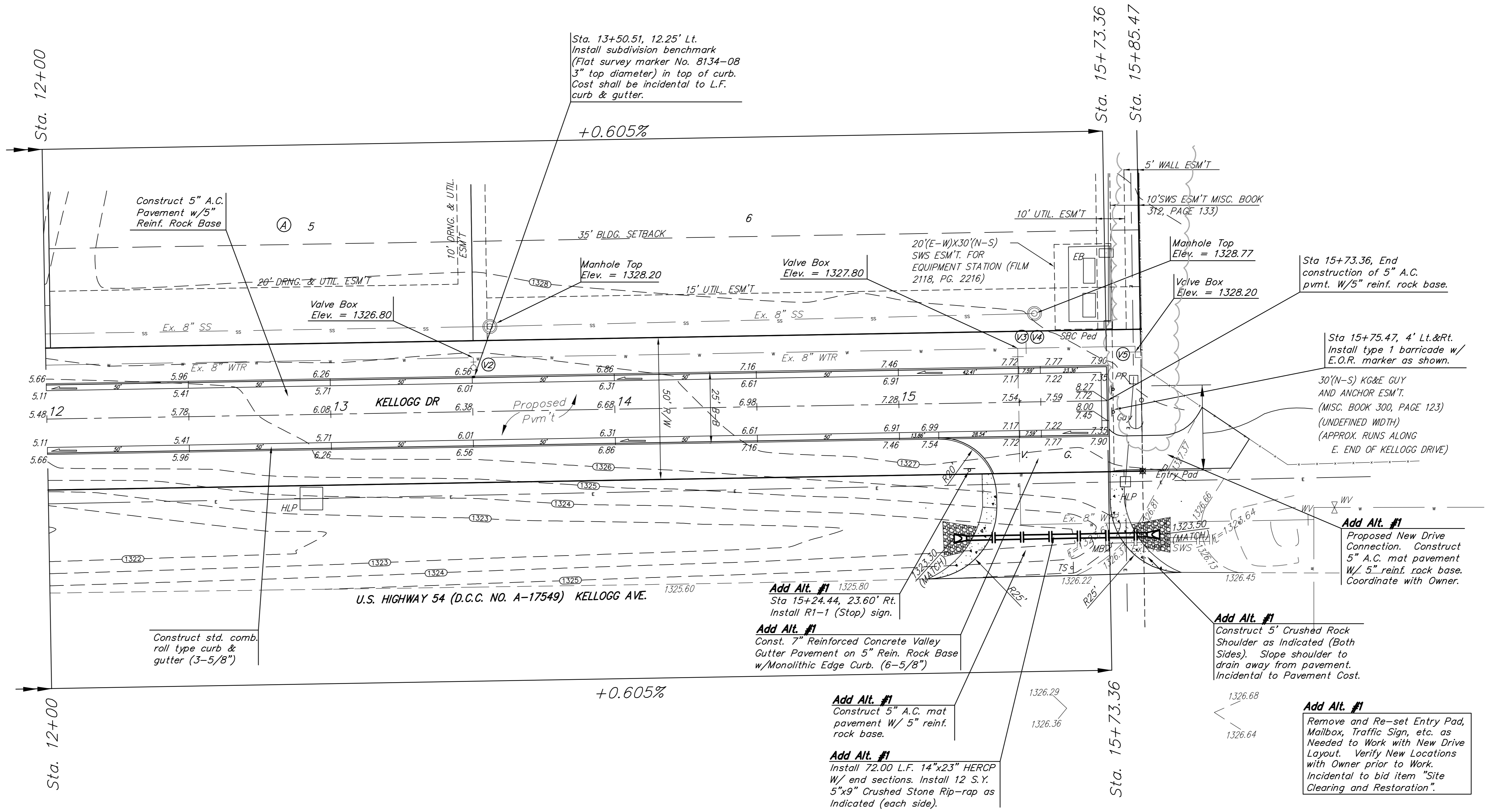


BENCHMARK:
 "□" CUT ON TRAFFIC SIGNAL
 LIGHT POLE BASE, NW CORNER OF
 KELLOGG & 143RD STREET EAST.

ELEV. = 1318.61 NGVD
 ELEV. = 131.21 CITY DATUM

Scale: 1" = 20'
 • = Iron



VALVE LOCATION TABLE

VALVE NUMBER	BASELINE STATION	OFFSET DISTANCE	OFFSET DIRECTION
2	13+50.51	19	Lt.
3	15+42.17	16	Lt.
4	15+45.17	19	Lt.
5	15+83.53	17	Lt.

Paving contractor will be responsible to operate all water valves on the project, in the presence of the inspector, to ensure accessibility to the valves, and that all valves are left in the "ON" position when the project is completed.

NOTE:
 ROLL TYPE CURB & GUTTER TO BE CONSTRUCTED ON THE PAVEMENT SHOWN ON THIS SHEET. TOP OF CURB ELEVATIONS ARE GIVEN FOR FULL HEIGHT CURB.

Baughman Prairie Pond Plaza 2nd Addition
KELLOGG DRIVE
 Sta. 12+00 to 15+73.36

Baughman Company, P.A. 315 Ellis St. Wichita, KS 67211 P 3163622271 F 3163620149
 ENGINEERING | SURVEYING | PLANNING | LANDSCAPE ARCHITECTURE

PROJECT NUMBER 472-84686	DESIGN MWS	DRAWN JR/W
REVISIONS:	APPROVED MWS	DATE 5-09-08
SCALE Noted		SHEET 8 OF 21

E:\Prairie Pond Plaza\Street & Water\05.08_Str.dwg 05-05-E249