

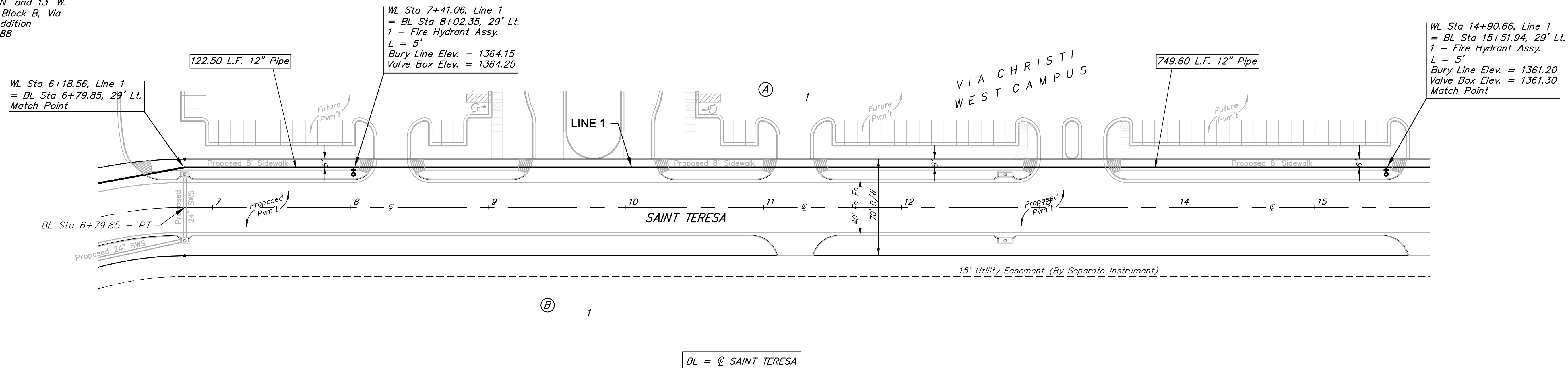
BENCHMARKS:

BM #1: 3/4" Iron Pipe with Sedgwick County Cap in Concrete at the SW Cor., SW 1/4, Sec. 2, Twp. 27-S R-2-W. ELEV. = 1367.00 NAVD88

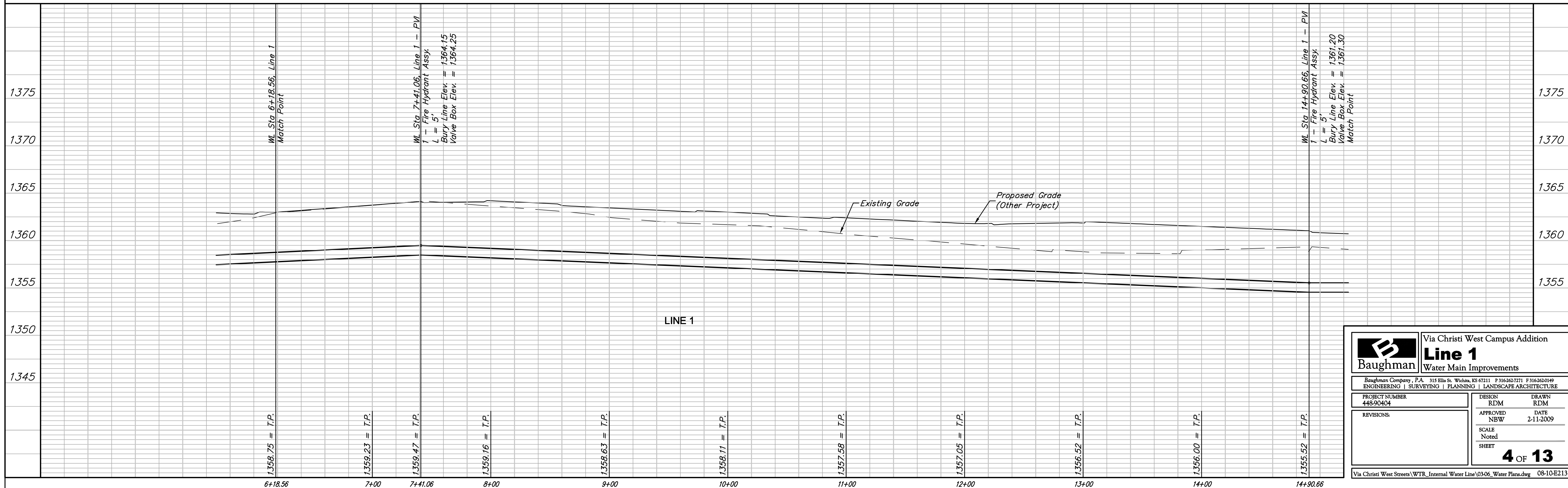
BM #2: "□" Cut on top of NW Wingwall of Bridge on 21st Street N. 27.3' North of Section Line 1283.7' E. of SW Cor., SW 1/4, Sec. 2, TWP. 27-S, R-2-W. ELEV. = 1365.87 NAVD88

BM #3: 60d Step Bench, SE Corner of Wooden Bridge, 42' N. and 13' W. of the SW Cor., Lot 1, Block B, Via Christi-West Campus Addition ELEV. = 1363.52 NAVD88

Scale: 1" = 40' (Hor.)
1" = 5' (Vert.)
• = Iron



BL = \varnothing SAINT TERESA



		Via Christi West Campus Addition	
		Line 1	
Baughman Company, P.A. 315 Ellis St. Wichita, KS 67211 P 316-262-7771 F 316-262-0149		ENGINEERING SURVEYING PLANNING LANDSCAPE ARCHITECTURE	
PROJECT NUMBER 448-90404	DESIGN RDM	DRAWN RDM	
APPROVED NBW	DATE 2-11-2009		
REVISIONS:		SCALE Noted	
		SHEET 4 OF 13	
Via Christi West Streets \WTR_ Internal Water Line\03-06_Water Plans.dwg 08-10-E213			