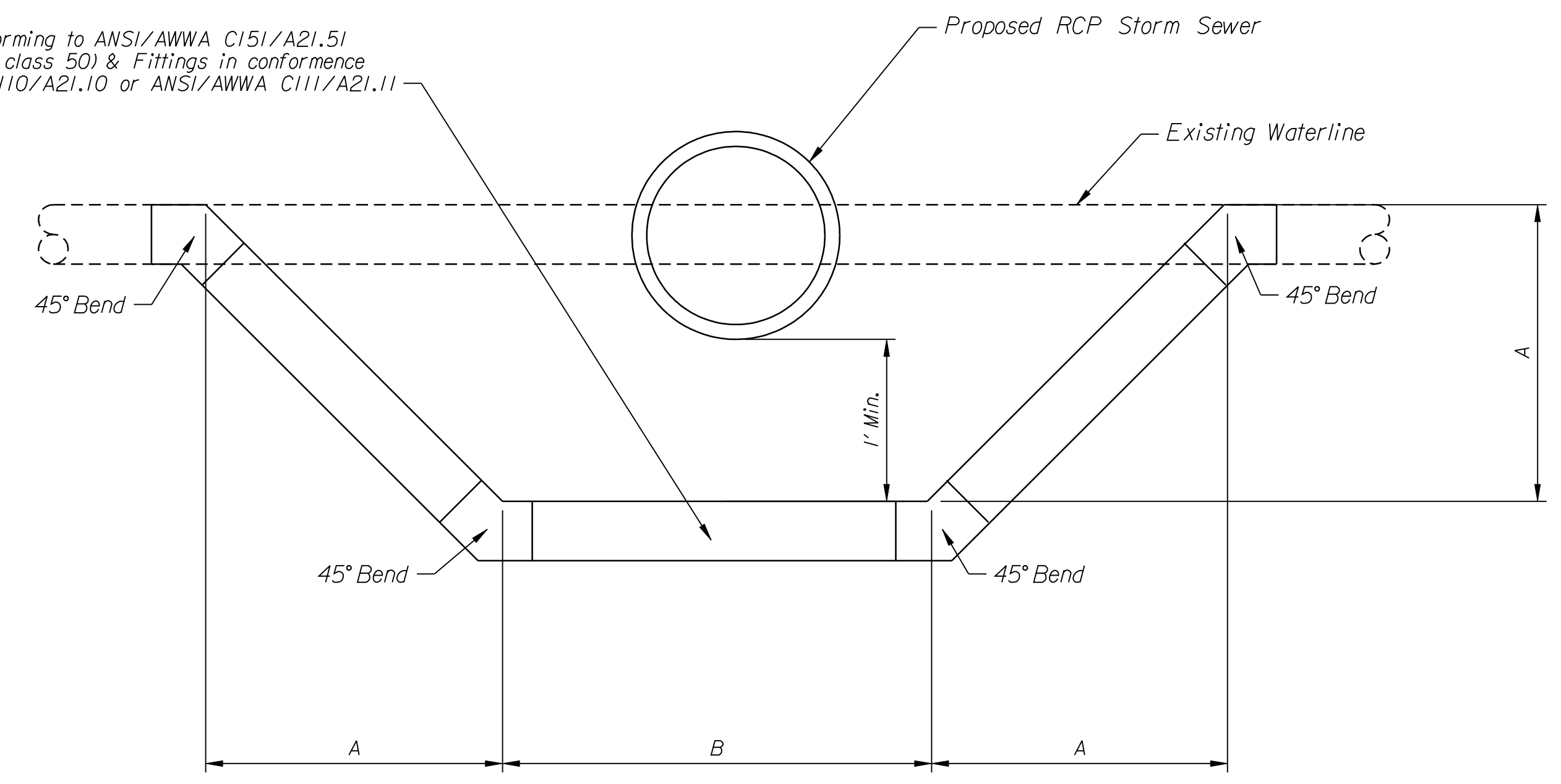


STATE	PROJECT NO.	YEAR	SHEET NO.	TOTAL SHEETS
KANSAS	468-84219	2006	3	17

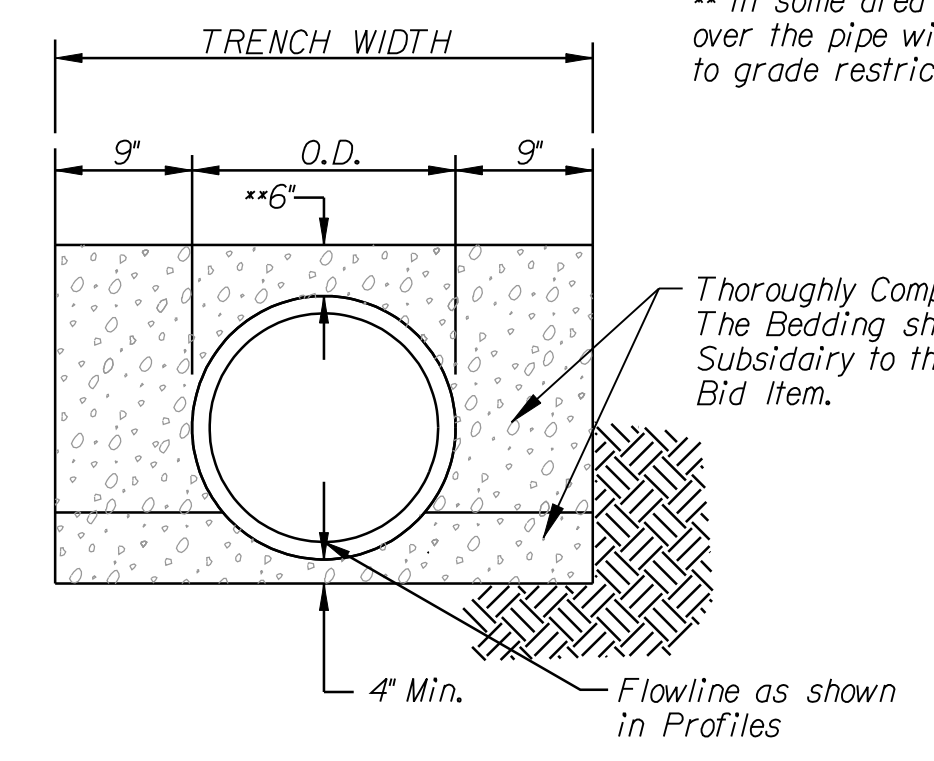
DATE	
BY	
REFERENCES NOTED	
REFERENCES CHECKED	

Proposed DIP conforming to ANSI/AWWA C151/A21.51 (minimum thickness class 50) & Fittings in conformance with ANSI/AWWA C110/A21.10 or ANSI/AWWA C111/A21.11



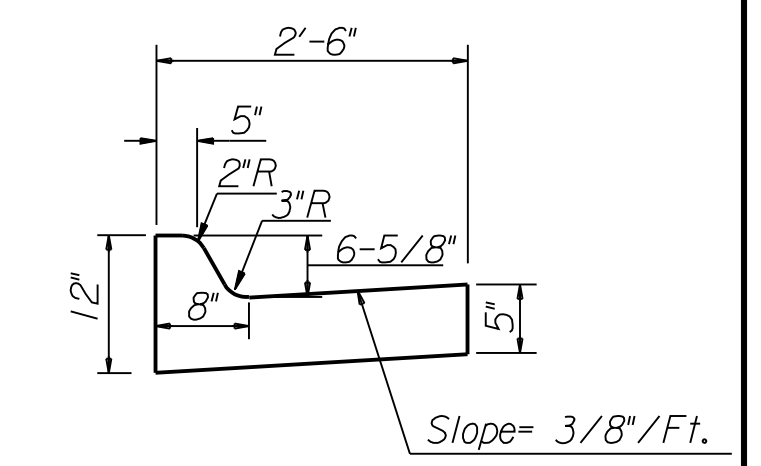
Station	Offset	Side	A	B	L.F. Replacement
12+36.95	5.29	Rt.	1.50	6.00	9.00
16+08.30	5.00	Lt.	1.50	5.70	8.70
16+37.78	5.00	Lt.	1.75	5.70	9.20
16+44.08	5.38	Rt.	1.75	12.00	15.50
16+44.08	32.50	Rt.	0.50	30.83	31.80
20+03.56	5.47	Rt.	4.25	6.00	14.50
Total=					88.70

Waterline Relocation Details
N.T.S.

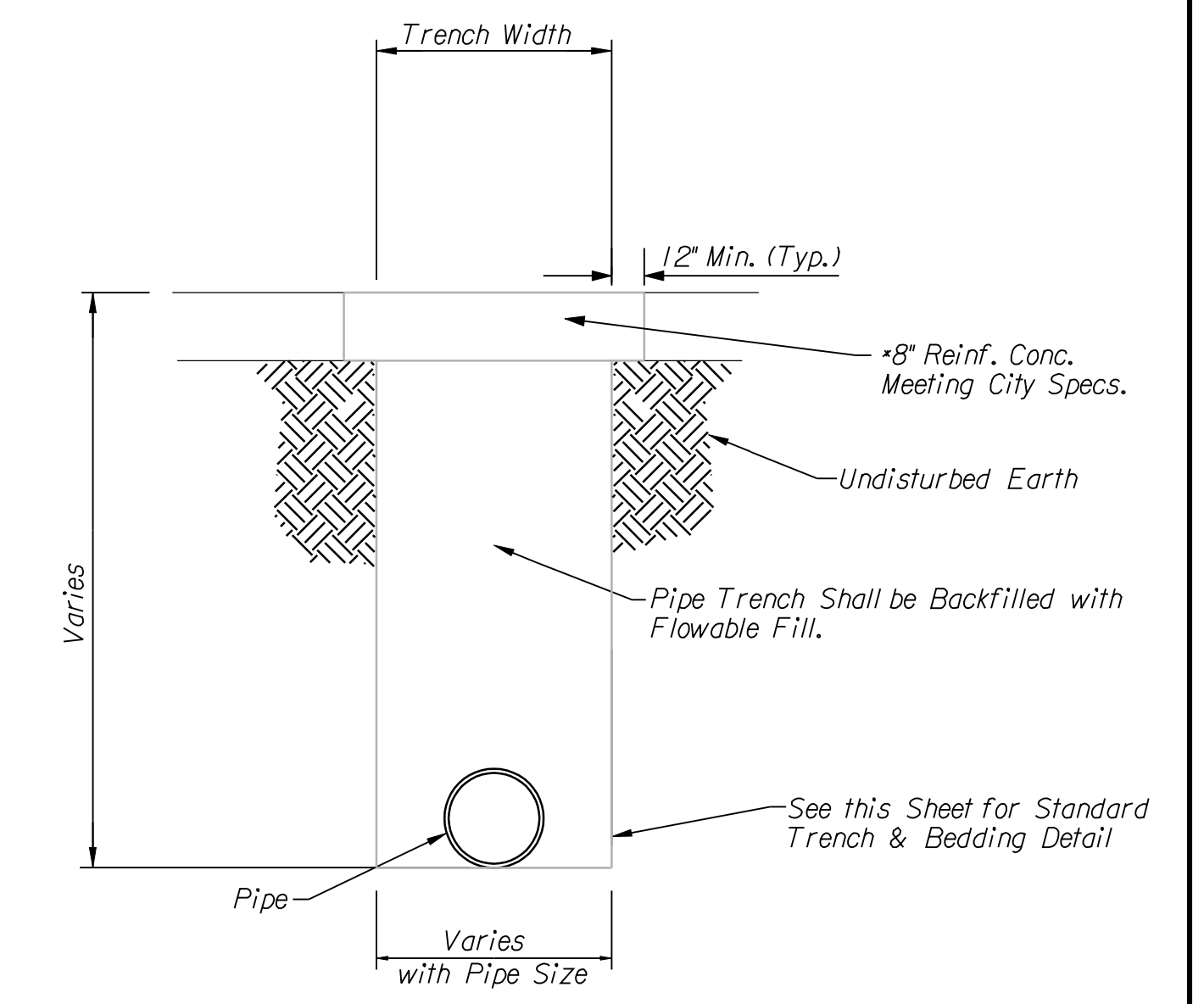


STANDARD TRENCH & BEDDING DETAILS

** In some areas the amount of sand cover over the pipe will need to be reduced, due to grade restrictions.



COMBINED CURB & GUTTER



TRENCH DETAIL FOR CONC. ROADWAY
N.T.S.

*8" is a nominal dimension. If the existing pavement is greater than 8" the contractor shall match the existing pavement depth. In some areas the pavement depth will be reduced to 6" to clear the top of pipe.

Plotted By: SGEEngstrom
File: g:\W0610021\ROAD\021typ.sht
Plotted: 12/11/2006

CITY OF WICHITA			
INTERSECTION OF HARRY & MEADE			
UPRR DRAINAGE IMPROVEMENTS			
TYPICAL SECTIONS			
& Waterline Relocation Details			
WICHITA, KANSAS			
		DESIGNED:	DATE:
		S.G.E.	S.G.E.
		CHECKED:	DATE:
		B.A.L.	12/11/2006