

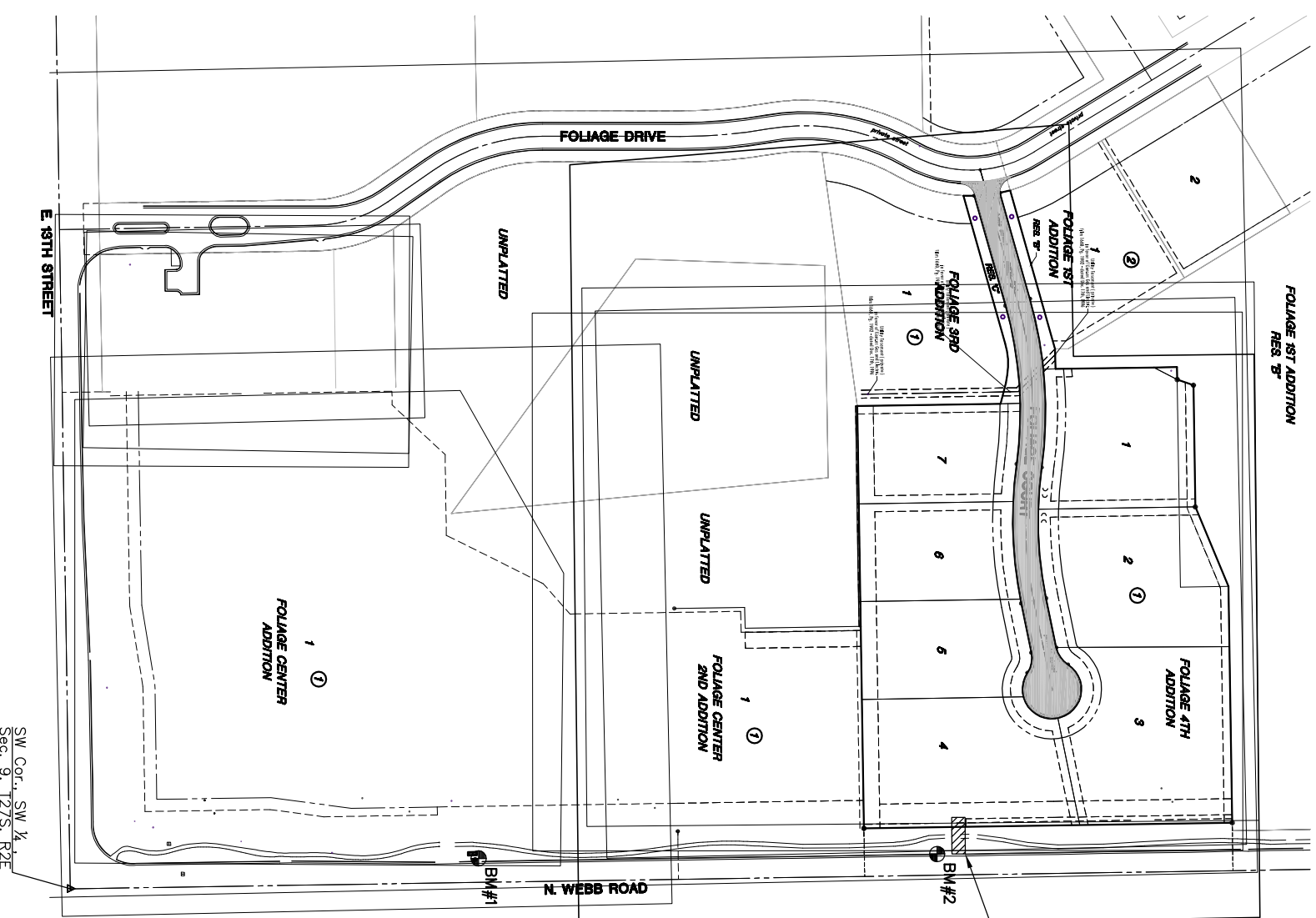
# GENERAL NOTES

- UNLESS SHOWN OR STATED OTHERWISE ON THESE DRAWINGS, MATERIALS AND CONSTRUCTION SHALL BE IN ACCORDANCE WITH CITY OF WICHITA CONCRETE PAVEMENT AND ASPHALTIC CONCRETE PAVEMENT SPECIFICATIONS.
- CONTRACTOR WILL BE REQUIRED TO PROVIDE A MINIMUM ADVANCE NOTICE OF SEVENTY-TWO (72) HOURS TO UTILITY COMPANIES PRIOR TO STARTING ANY EXCAVATION AS FOLLOWS:  
 KANSAS ONE-CALL 800-344-7233  
 OR (LOCAL WICHITA) 316-687-2470  
 THE CONTRACTOR MUST NOTIFY THE FOLLOWING IN CASE OF AN EMERGENCY:  
 COX COMMUNICATIONS (CABLE) 316-262-0661  
 KANSAS GAS SERVICE (GAS) 316-832-3101  
 AT&T (TELEPHONE) 800-870-8390  
 CITY OF WICHITA WATER & SEWER 316-262-6000  
 AQUILA (GAS) 800-303-0357  
 WESTAR 316-383-8600
- THE CONTRACTOR SHALL BE RESPONSIBLE FOR PRESERVING PROPERTY IRONS, WHICH ARE DAMAGED OR DESTROYED BY HIS CONSTRUCTION OPERATIONS. SUCH IRONS SHALL BE RE-ESTABLISHED BY A LICENSED LAND SURVEYOR IN ACCORDANCE WITH STATE LAWS.
- EXISTING UTILITIES AND THEIR LOCATIONS, AS SHOWN ON THE PLANS REPRESENT THE BEST INFORMATION OBTAINABLE FOR DESIGN. LOCATION INFORMATION HAS BEEN OBTAINED FROM THE VARIOUS UTILITY COMPANIES AND IS EITHER FROM COMPANY RECORD DRAWINGS OR COMPANY PROVIDED FIELD LOCATIONS. THE PLAN LOCATIONS SHOWN ARE NOT GUARANTEED. ADDITIONAL EXISTING UTILITIES MAY ALSO BE ENCOUNTERED.
- RUBBLE FROM THE REMOVAL OF MISCELLANEOUS STRUCTURES AND EXCESS EXCAVATION WHICH IS TO BE WASTED SHALL BE DISPOSED OF ON SITES TO BE PROVIDED BY THE CONTRACTOR. THESE SITES SHALL BE APPROVED BY THE ENGINEER AS BEING SUITABLE FOR DEPOSIT AND THE LOCATION, LOCATIONS AND APPEARANCE WILL NOT BE APPROVED. ALL DISPOSAL SITES MUST BE APPROVED BY THE KANSAS DEPARTMENT OF HEALTH AND ENVIRONMENT MATERIAL EITHER STOCKPILED OR DISPOSED OF IN A FLOOD PLAN. ANY MATERIAL DUMPED IN WATERS OF THE UNITED STATES OR WETLANDS IS SUBJECT TO U.S. CORPS OF ENGINEERS PERMITTING REGULATIONS. ANY MATERIAL BURIED OR STOCKPILED BEYOND APPROVED CONSTRUCTION LIMITS WOULD REQUIRE ADDITIONAL ARCHAEOLOGICAL INVESTIGATIONS UNLESS BURIED IN A PREVIOUSLY APPROVED BORROW LOCATION.
- CONTRACTOR SHALL PROVIDE TEMPORARY SEDIMENT CONTROL AT ALL INLETS. SUCH CONTROL SHALL BE MAINTAINED UNTIL AND UPON GERMINATION OF SEEDING. ACCEPTABLE MEANS OF CONTROL SHALL BE APPROVED BY ENGINEER. COST SHALL BE CONSIDERED SUBSIDIARY TO SITE CLEARING AND RESTORATION. (REFER TO EROSION CONTROL SHEET FOR MEASURES).
- EQUIPMENT AND CONSTRUCTION MATERIALS SHALL REMAIN OUT OF AND AWAY FROM TREE DRIPLINES SO AS NOT TO COMPACT THE ROOT ZONE OR DAMAGE THE TREE.
- ANY TREE THAT MUST HAVE BRANCHES REMOVED SHALL BE TRIMMED WITH A SHARP INSTRUMENT/TOOL THAT IS INTENDED FOR SUCH OPERATIONS. KNOCKING BRANCHES OFF WITH A BACKHOE OR OTHER SIMILAR MACHINES IS NOT ACCEPTABLE. REFER TO DETAIL FOR TREE TRIMMING PROCEDURE.
- A SAW CUT OF AT LEAST ONE-HALF THE DEPTH OF THE EXISTING SURFACE COURSE OR ONE-FIFTH THE DEPTH OF THE EXISTING TOTAL PAVEMENT THICKNESS SHALL BE PROVIDED AT LOCATIONS WHERE PROPOSED CONSTRUCTION ADJUTS AN EXISTING SURFACE OR PAVEMENT FOR WHICH PARTIAL REMOVAL OF THAT SURFACE OR PAVEMENT IS REQUIRED. SAW JOINT TO FACILITATE REMOVAL WITHIN THREE (3) FEET OF EXISTING JOINTS WILL NOT BE PERMITTED AND FOR SUCH INSTANCES THE LIMITS OF REMOVAL SHALL EXTEND TO THE EXISTING JOINT. SUCH SAW CUTS WILL NOT BE PAID FOR DIRECTLY AND THIS COST SHALL BE CONSIDERED AS SUBSIDIARY TO THE REMOVAL OF SURFACE OR PAVEMENT.
- A 6" LAYER OF TOPSOIL IS TO BE PLACED OVER ALL AREAS WHERE THE VIRGIN GRADE NO LONGER EXISTS WITH THE EXCEPTION OF THE GRADES BELOW THE PROPOSED PAVEMENT. THIS INCLUDES BERMS & SLOPES. THE FINISHED GRADE INDICATES THE SURFACE ELEVATION AFTER THE 6" LAYER OF TOPSOIL HAS BEEN PLACED.
- ALL DISTURBED AREAS NOT REQUIRED TO BE SODED SHALL BE SEEDED WITH PERENNIAL RYE GRASS AT A RATE OF 200 LBS. PER ACRE WITHIN 10 DAYS OF CONSTRUCTION. CONTRACTOR TO PREPARE GROUND PER CITY OF WICHITA SPECIFICATIONS. COST IS SUBSIDIARY TO SITE PREPARATION AND RESTORATION.
- CONTRACTOR SHALL NOT START WORK ON THE PROJECT UNTIL THE PROJECT INSPECTOR IS ASSIGNED TO THE PROJECT AND IS PRESENT ON THE SITE. ANY WORK DONE WITHOUT INSPECTION WILL BE REQUIRED TO BE UNCOVERED FOR INSPECTION.
- THE CONTRACTOR SHALL RESTORE ALL DITCHES, SWALES, ROAD SHOULDERS, ENTRANCES AND BANK LINES TO THEIR ORIGINAL SLOPES AND GRADES EXCEPT AS SHOWN OTHERWISE.
- CONSTRUCTION STAKING WILL BE PROVIDED BY MKEC ENGINEERING CONSULTANTS.
- TRANSITION CURB FROM FULL HEIGHT COMBINATION CURB AND GUTTER TO ROLL TYPE COMBINATION CURB AND GUTTER IS TO BE PAID AS BID FOR LINEAL FEET COMBINED CURB AND CUTTER (3 5/8" ROLL).

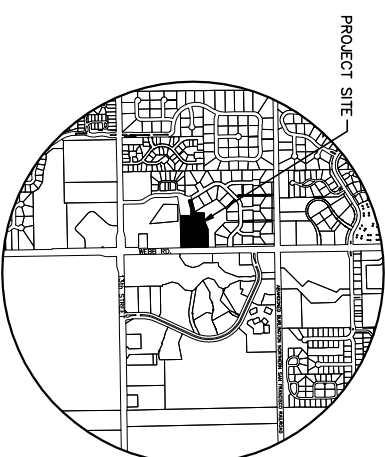
# PAVING PLANS FOLIAGE FOURTH ADDITION 190 PPP (607879)

THE CITY OF WICHITA, KANSAS  
 JAMES L. ARMOUR, PE - CITY ENGINEER

FOLIAGE 1ST ADDITION  
 RES. 7'



Contractor to construct stabilized construction entrance.



## VICINITY MAP

## INDEX TO DRAWINGS

SHEET NO.	DESCRIPTION
1	TITLE SHEET
2	TYPICAL SECTIONS
3	SIGNAGE DETAILS
4	VALLEY GUTTER DETAILS
5-6	PAVING PLANS
7	BUBBLE MAP
8-12	BMP DETAILS
13-14	CROSS SECTIONS
15	FINAL PLAT

## BENCHMARKS

- BM#1 SQUARE CUT TOP WEST SIDE CURB INLET. 2ND CURB INLET NORTH OF WEBB ROAD AND 13TH ST. WEST SIDE WEBB ROAD. APPROX. 500' NORTH WEBB/13TH. ELEV. = 1373.47(NGVD 29)
- BM#2 SQUARE CUT TOP SOUTH SIDE OF ENTRANCE TO 1401 N WEBB ROAD. WEST SIDE WEBB ROAD. APPROXIMATELY 1100 FEET NORTH OF WEBB RD. AND 13TH ST. ELEV. = 1375.36(NGVD 29)

PROJECT LENGTH	Foliage Court
661 L.F.	

AS-BUILT PLANS  
 CONTRACTOR: APAC  
 INSPECTOR: JEFF CARTWRIGHT, MKEC  
 ENGINEERING  
 PDF BY: SMB, MKEC ENGINEERING

APPROVED AS NOTED  
 BY CITY ENGINEER OF WICHITA,  
 & BY WICHITA WATER & SEWER DEPARTMENT,  
 & BY WICHITA FIRE DEPARTMENT

Paving  
 (Public Works)

*James L. Armour* 5/23/08

AS-BUILT MARCH 2008

# PAVING PLANS FOR FOLIAGE FOURTH ADDITION PHASE 1

**MKEC**  
 ENGINEERING  
 CONSULTANTS, INC.  
 411 N. WEBB ROAD  
 WICHITA, KS 67202  
 316-684-9600

TITLE SHEET

SHEET TITLE  
 04274  
 PROJECT NUMBER

SPS | JWC | DFL  
 DESIGNED DRAWN CHECKED

ISSUED  
 May 2008

REVISED

SHEET NO.

1 of 15