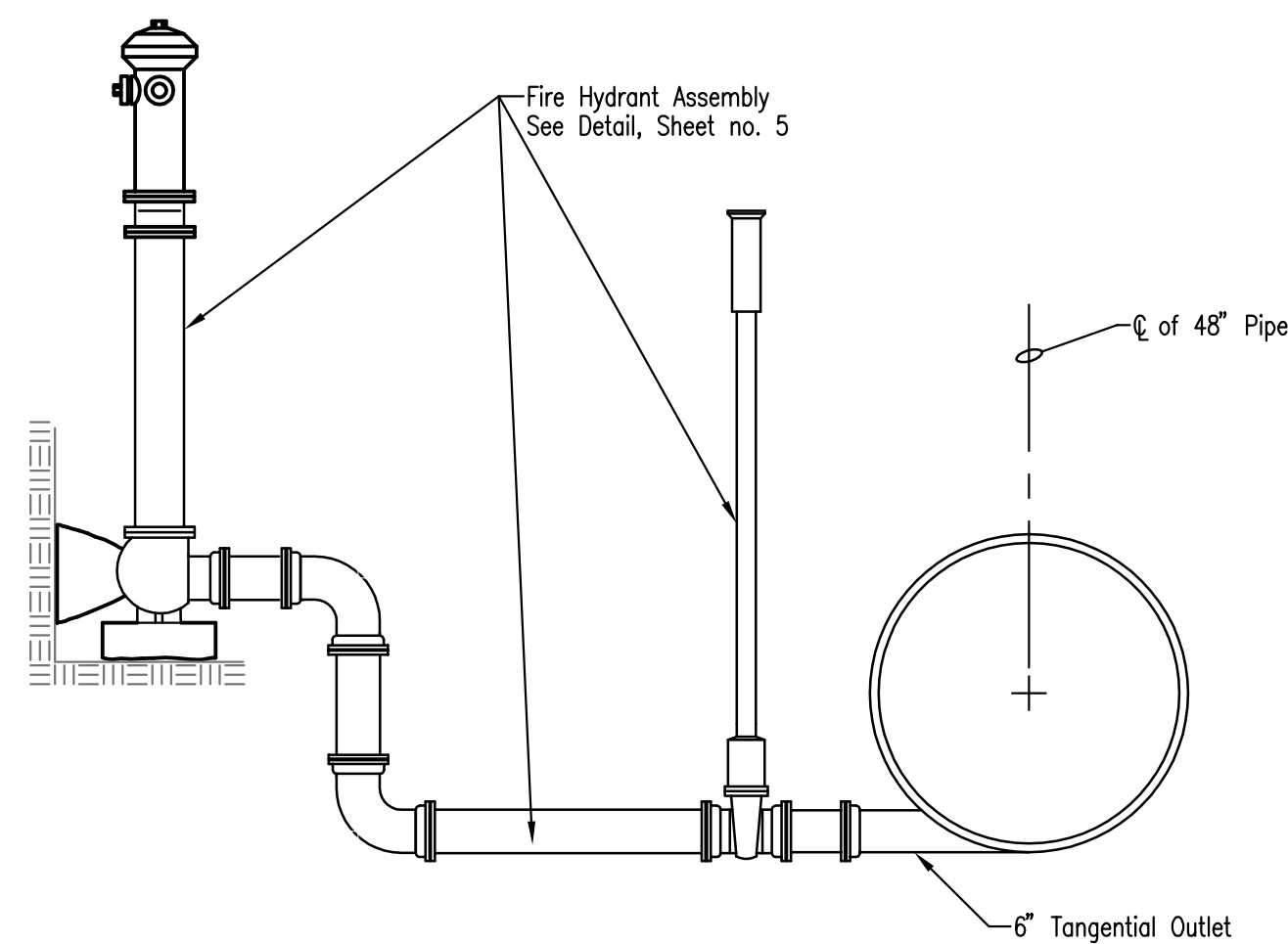


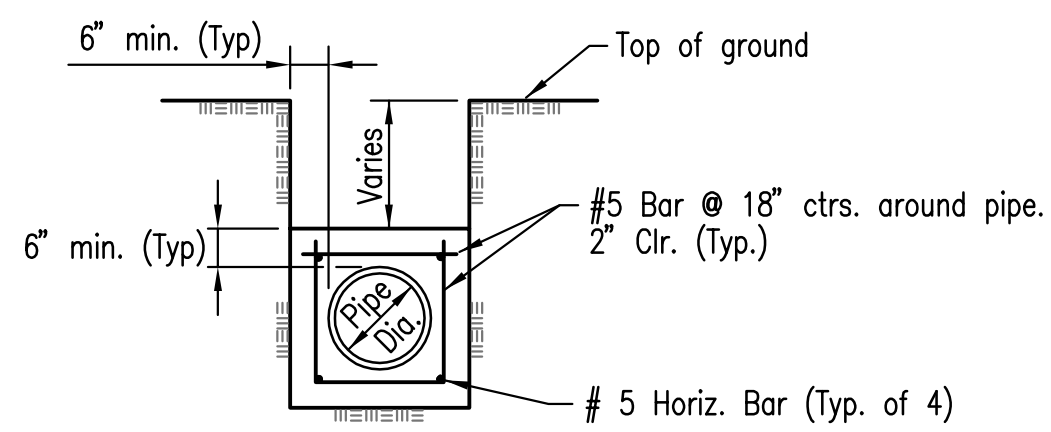
STEEL ENCASEMENT DETAIL

For pipe larger than 12" dia.

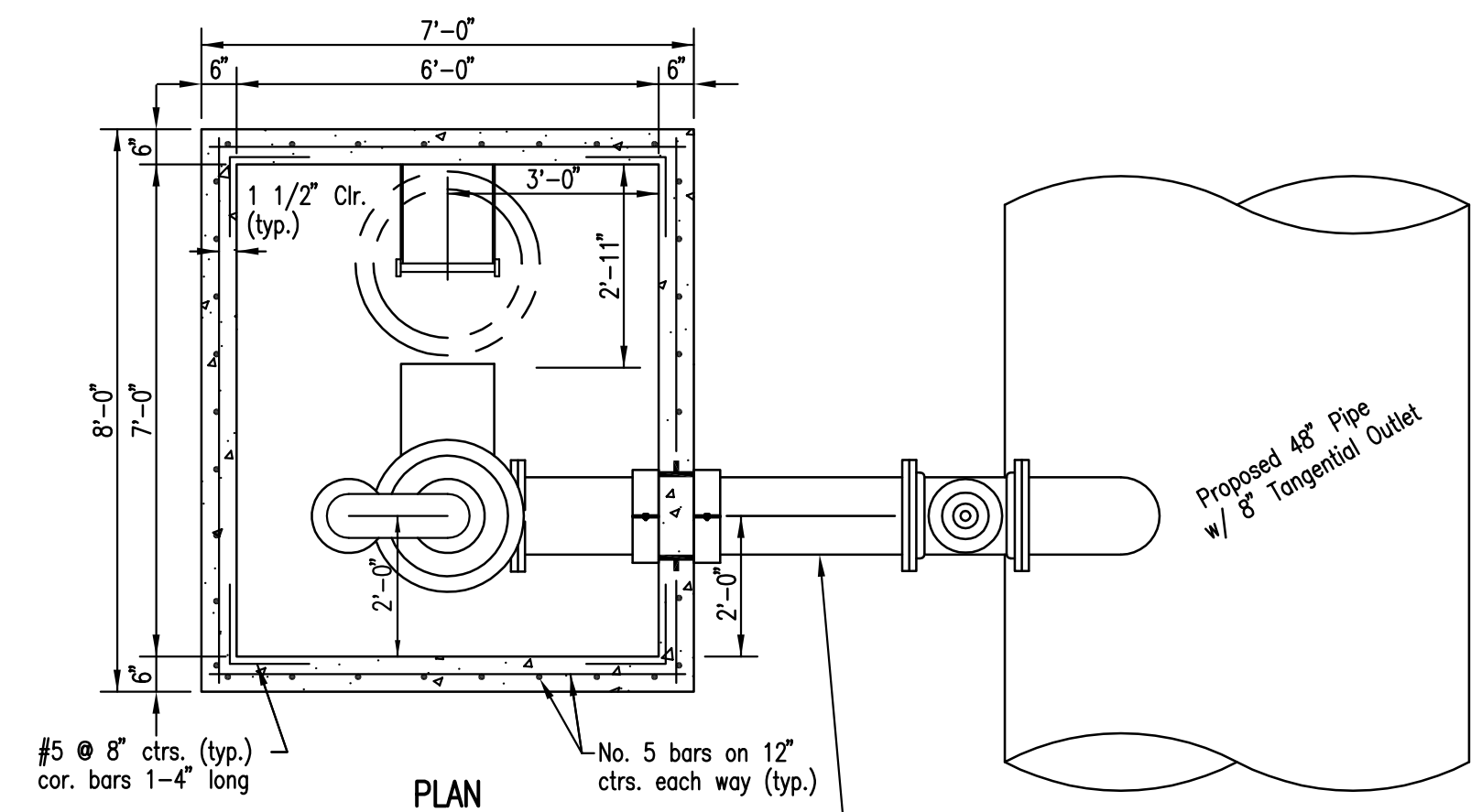


FLUSHING HYDRANT ASSEMBLY

Not to Scale

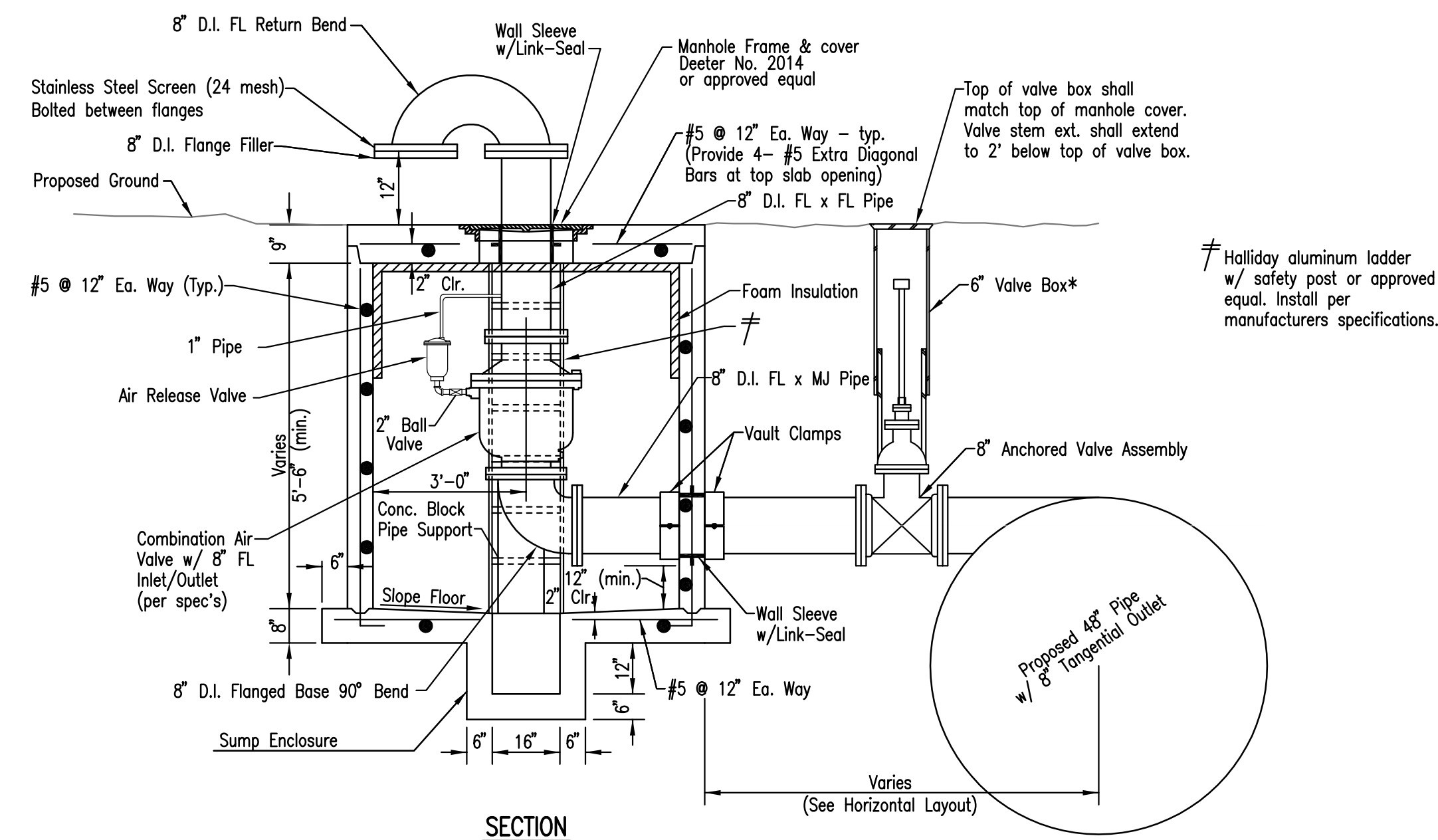


CONCRETE ENCASEMENT DETAIL



PLAN

8" Pipe and Fittings as required to connect to Main at specified station. (All pipe and fittings to be an approved restrained joint system.)



SECTION

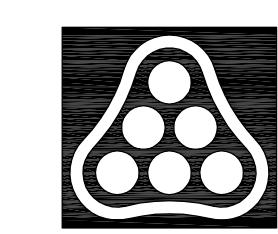
8" COMBINATION AIR VALVE VAULT

NO SCALE

NOTE: PROVIDE A "CONFINED ENTRY SPACE WARNING" SIGN, CHAMPION AMERICAN MODEL 73415HH OR APPROVED EQUAL, FOR VAULT AT LOCATION AS APPROVED BY THE ENGINEER. THE "CONFINED ENTRY SPACE WARNING" SIGN SHALL BE FASTENED TO THE TOP OF ALL VAULTS. IF NECESSARY FOR LANDSCAPING OR SITE CONSIDERATIONS, THE SIGN MAY BE FASTENED TO THE VAULT LID IF IT DOES NOT IMPEDE ACCESS OR AIR FLOW.

THE CONTRACTOR SHALL PROVIDE VERTICAL FITTINGS AS REQUIRED TO MEET THE REQUIREMENTS FOR DEPTH OF THE VAULT SHOWN IN THE DETAIL. THE TOP OF THE 8" PIPING INTO THE VAULT SHALL BE 5.2' (MIN.) BELOW EXISTING GROUND.

Scaled 02-02-2009 8:42:20 AM by CSL
 Plot Scale 1:1 02-03-2009 2:06:56 PM
 G:\2007\07704\000\PHASE 2A\07704-000-C-WaterlineDetail02



No.	Revision	By	Date
SOUTHEAST 48" WATERLINE - PHASE 2A LEWIS/IDA TO LEWIS/GREEN WATERLINE DETAILS JAMES L. ARMOUR, P.E. - CITY ENGINEER CITY OF WICHITA PROJECT NO. 448-90417 Professional Engineering Consultants, P.A. 303 S. TOPKA • WICHITA, KANSAS 67202 316-262-2691 • FAX 316-262-3003			
Designed by	MDK, EJB	Job No.	35-07704-000
Drawn by	CSL, JAN	Date	March 2008
			Sht. 7 of 38