

PLAN	CHECKED	DATE
	CHECKED	

N: 1,683,822.9330, E: 1,654,611.4133  
Sta. 10+00.0.  
Replace existing 8" SS Pipe with New 8" HDPE Pipe. Core existing concrete MH wall if necessary and Install New 8" Pipe. Seal new 8" Pipe to MH and seal any voids with an approved waterstop gasket and non-shrink grout. Construct a minimum of 3" Reinforced Concrete Encasement from MH wall. This work shall be considered subsidiary to the price bid for pipe in place.

CAUTION !!!  
6" Waterline  
(City of Wichita)

CAUTION !!!  
Prop. 48" Water Main

CAUTION !!!  
18" RCP  
Storm Water Sewer

CAUTION !!!  
6" Steel Gas Line  
(Black Hills Energy)

CAUTION !!!  
3" Gas Line  
(KGS)

N: 1,683,820.8125, E: 1,654,398.4831  
Sta. 12+12.9  
Const. MH 1  
Standard MH

N: 1,683,818.2833, E: 1,654,378.1306  
Remove Existing MH per City of  
Wichita Standards.  
Remove 233 L.F. of Existing 8" Pipe (E)

N: 1,683,836.0131, E: 1,654,360.2240  
Sta. 12+54.1  
Const. MH 2  
Standard MH

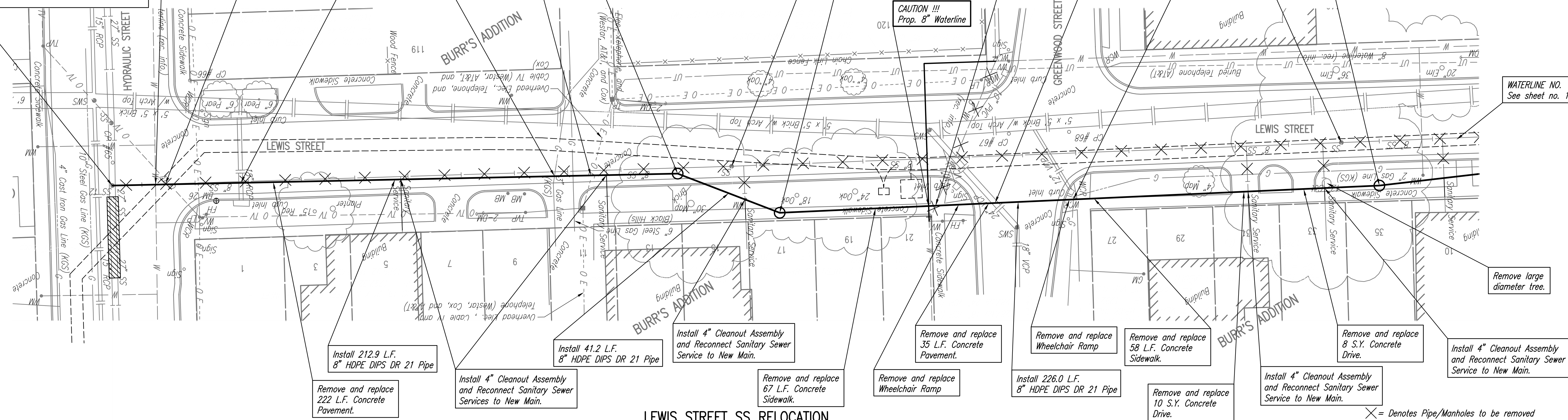
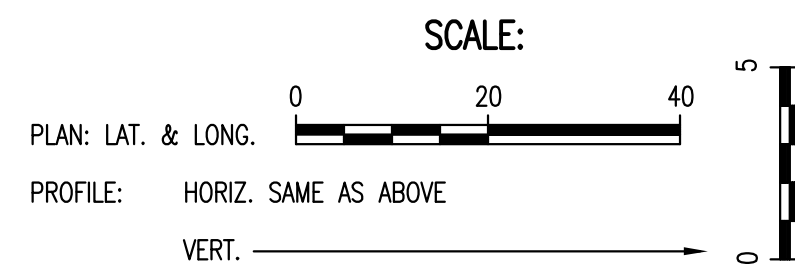
CAUTION !!!  
8" Waterline  
(City of Wichita)

CAUTION !!!  
24" VCP  
Storm Water Sewer

CAUTION !!!  
2" Gas Line  
(KGS)

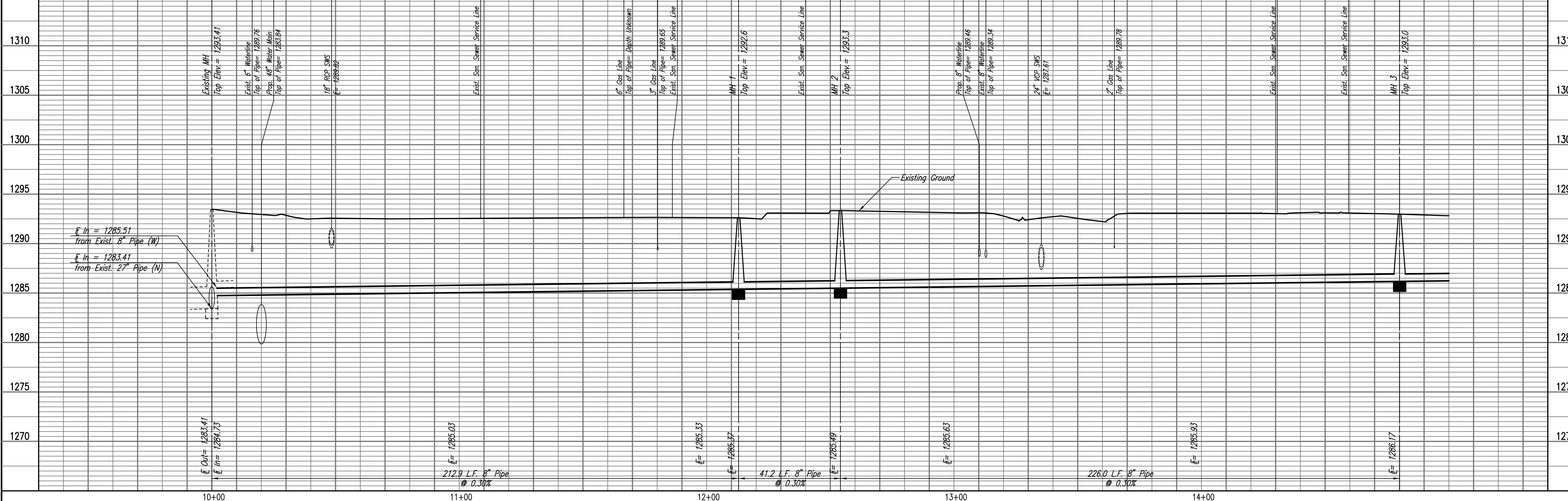
N: 1,683,811.9092, E: 1,654,148.4780  
Remove Existing MH per City of  
Wichita Standards.  
Remove 230 L.F. of Existing 8" Pipe (E)

N: 1,683,828.2721, E: 1,654,134.3218  
Sta. 14+80.1  
Const. MH 3  
Standard MH



LEWIS STREET SS RELOCATION

PROFILE	CHECKED	DATE
	CHECKED	



SOUTHEAST 48" WATERLINE - PHASE 2A  
LEWIS/DA TO LEWIS/GREEN  
LEWIS STREET SS RELOCATION  
JAMES L. ARMOUR, P.E. - CITY ENGINEER  
CITY OF WICHITA PROJECT NO. 448-90417

Professional Engineering Consultants, P.A.  
603 S. TOPICKA AVENUE, WICHITA, KANSAS 67202  
316.262.2691 • FAX 316.262.3003  
Designed By: MDK, EJB  
Date: March 2008  
Job No.: 55-07704-000  
Drawn By: JAN  
Sheet 25 of 38