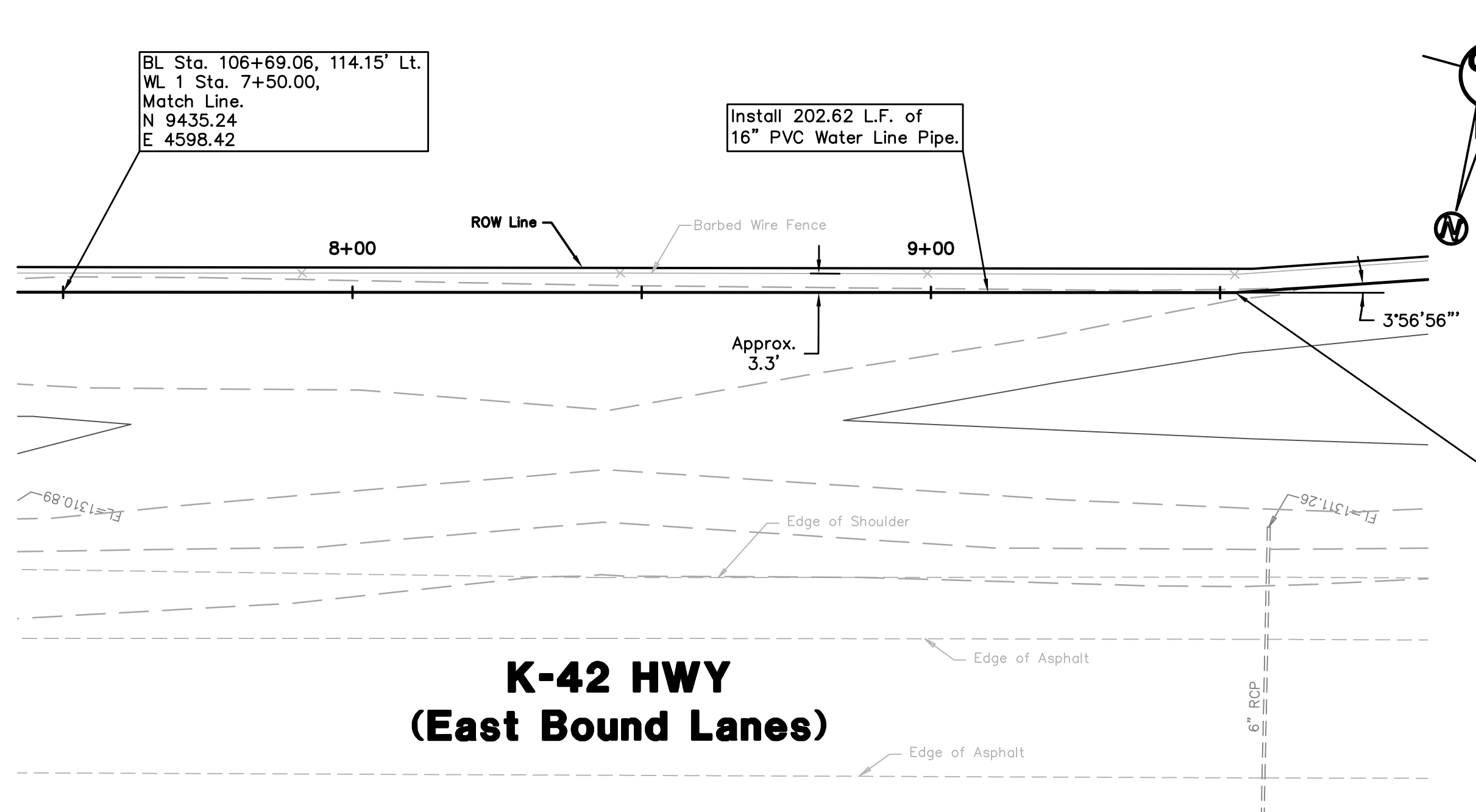


UTILITY LEGEND

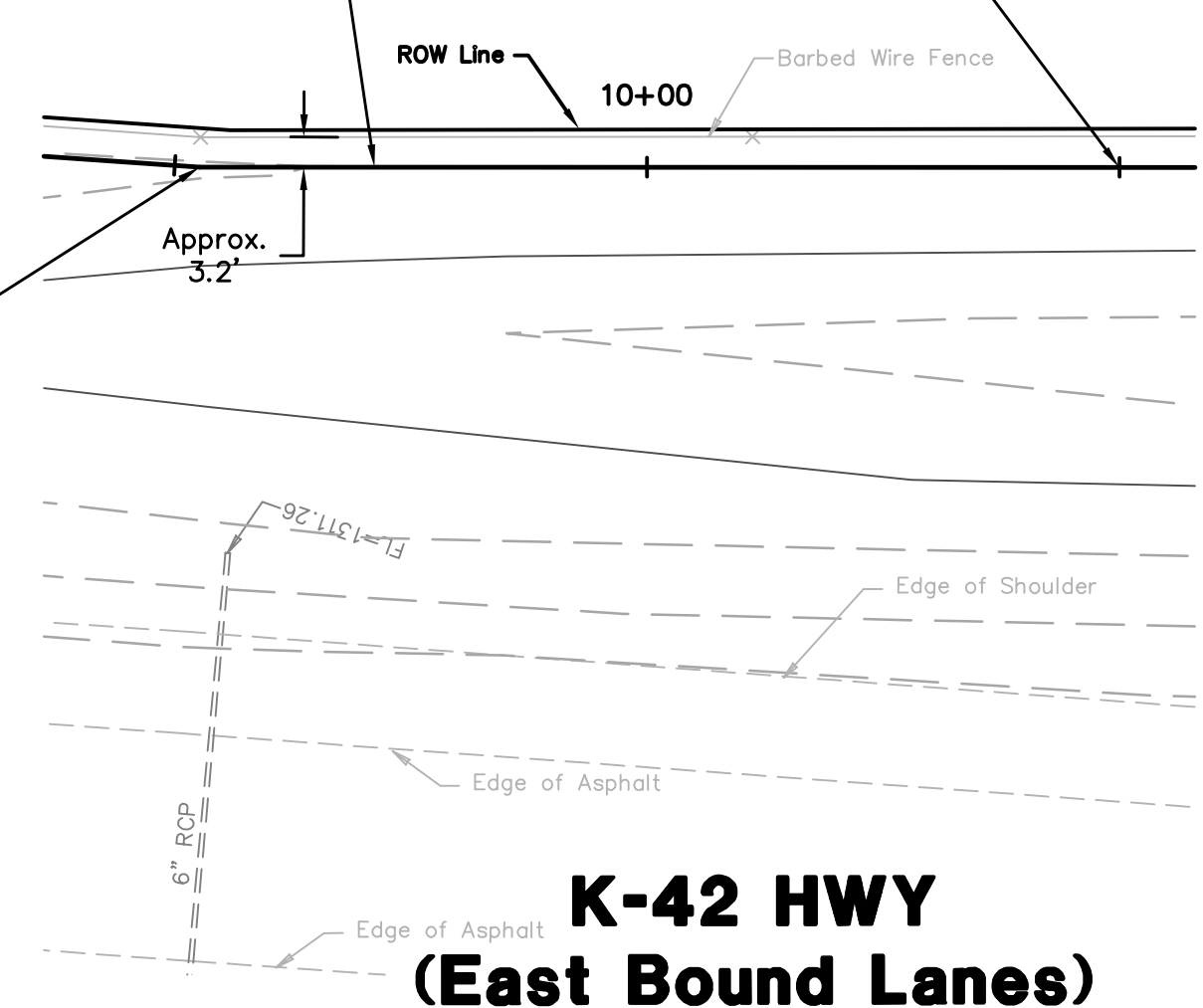
= Fire Hydrant	= Flag Pole
= Water Meter	= SS Manhole
= Water Valve	= SWS Manhole
= Gas Meter	= Sign
= Gas Valve	= Misc. Post
= Telephone Riser	= Guy Anchor
= Mailbox	= Power Pole
= Light Pole	
= Deciduous Tree or Shrub	
= Existing Fence	
= Right of Way Line	
= Underground Electric	
= Overhead Electric	
= Water Line	
= Sanitary Sewer	
= Gas Line	
= Cable TV or Fiber Optic	



BL Sta. 108+71.68, 114.39' Lt.  
WL 1 Sta. 9+52.62,  
3'56'56" Horiz. Deflection Lt.  
N 9380.93  
E 4403.21

Install 97.38 L.F. of 16" PVC Water Line Pipe.

BL Sta. 109+68.82, 121.22' Lt.  
WL 1 Sta. 10+50.00,  
Match Line.  
N 9348.43  
E 4311.41



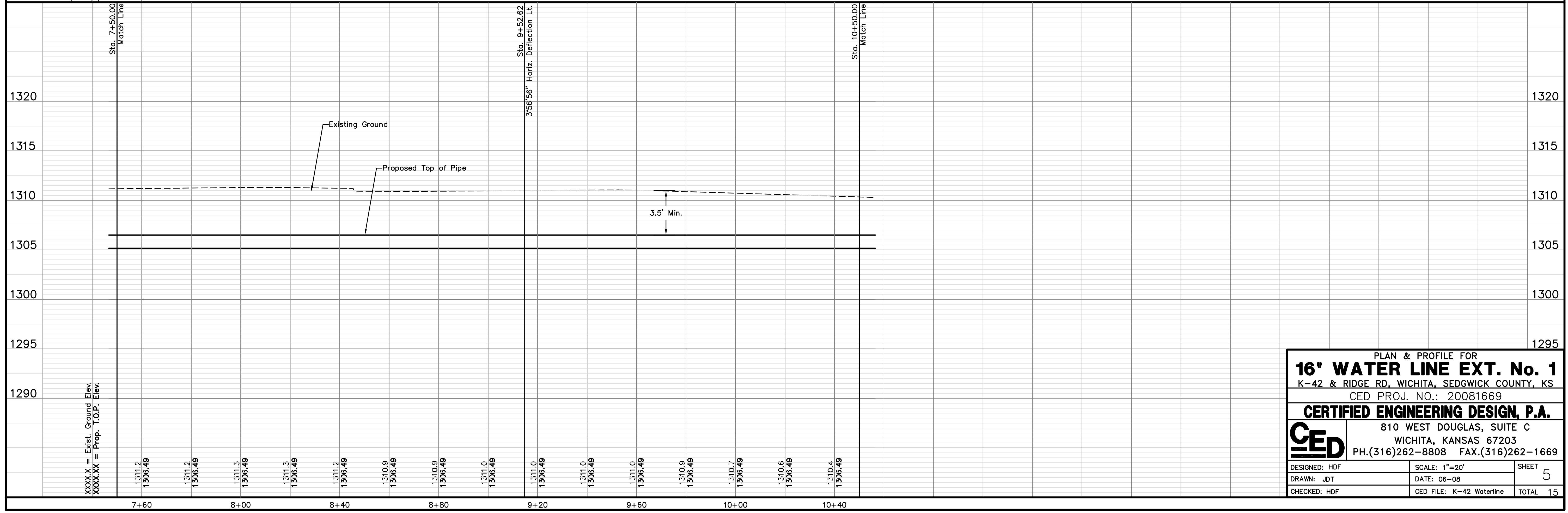
**K-42 HWY  
(East Bound Lanes)**

BENCHMARKS:  
BM #3 - Top Brass Plate Concrete Monument 60 feet South and 20 feet East of SW Cor. SE 1/4 Sec. 9, T28S, R1W. Elev.=1302.12  
BM #5 - Found Monument on South end West Bannister of Bridge ± 120 feet North of Ridge and McArthur. Taken from KDOT Proj. #628-22-140 (B-426) Garber No. G2006-196. Adj. Elev.=1299.17 Measured Elev.=1299.34

UTILITIES SHOWN REPRESENT THE BEST INFORMATION AVAILABLE FOR DESIGN. ADDITIONAL UTILITIES MAY BE PRESENT ON THIS PROJECT. THE CONTRACTOR SHALL BE RESPONSIBLE FOR DETERMINING THE EXACT LOCATION, DEPTH AND SIZE OF ALL UNDERGROUND UTILITIES PRIOR TO CONSTRUCTION. THE CONTRACTOR SHALL BE LIABLE FOR ANY DAMAGE CAUSED BY THE FAILURE TO DO SO.

Unless otherwise noted, elevations shown are to top of pipe.

**WATER LINE NO. 1**



PLAN & PROFILE FOR  
**16" WATER LINE EXT. No. 1**  
K-42 & RIDGE RD, WICHITA, SEDGWICK COUNTY, KS  
CED PROJ. NO.: 20081669  
**CERTIFIED ENGINEERING DESIGN, P.A.**  
810 WEST DOUGLAS, SUITE C  
WICHITA, KANSAS 67203  
PH.(316)262-8808 FAX.(316)262-1669

DESIGNED: HDF	SCALE: 1"=20'	SHEET
DRAWN: JDT	DATE: 06-08	5
CHECKED: HDF	CED FILE: K-42 Waterline	TOTAL 15