

UTILITY LEGEND

FH	= Fire Hydrant	FP	= Flag Pole
WM	= Water Meter	MH	= SS Manhole
WV	= Water Valve	SWS	= SWS Manhole
GM	= Gas Meter	Sign	= Sign
GV	= Gas Valve	Misc. Post	= Misc. Post
TR	= Telephone Riser	Guy Anchor	= Guy Anchor
Mailbox	= Mailbox	Power Pole	= Power Pole
		Light Pole	= Light Pole
		Deciduous Tree or Shrub	= Deciduous Tree or Shrub
		Existing Fence	= Existing Fence
		Right of Way Line	= Right of Way Line
		Underground Telephone	= Underground Telephone
WESTAR UGE	= Underground Electric		
WESTAR OHE	= Overhead Electric		
W-W-W	= Water Line		
SS	= Sanitary Sewer		
gas	= Gas Line		
ctv	= Cable TV or Fiber Optic		

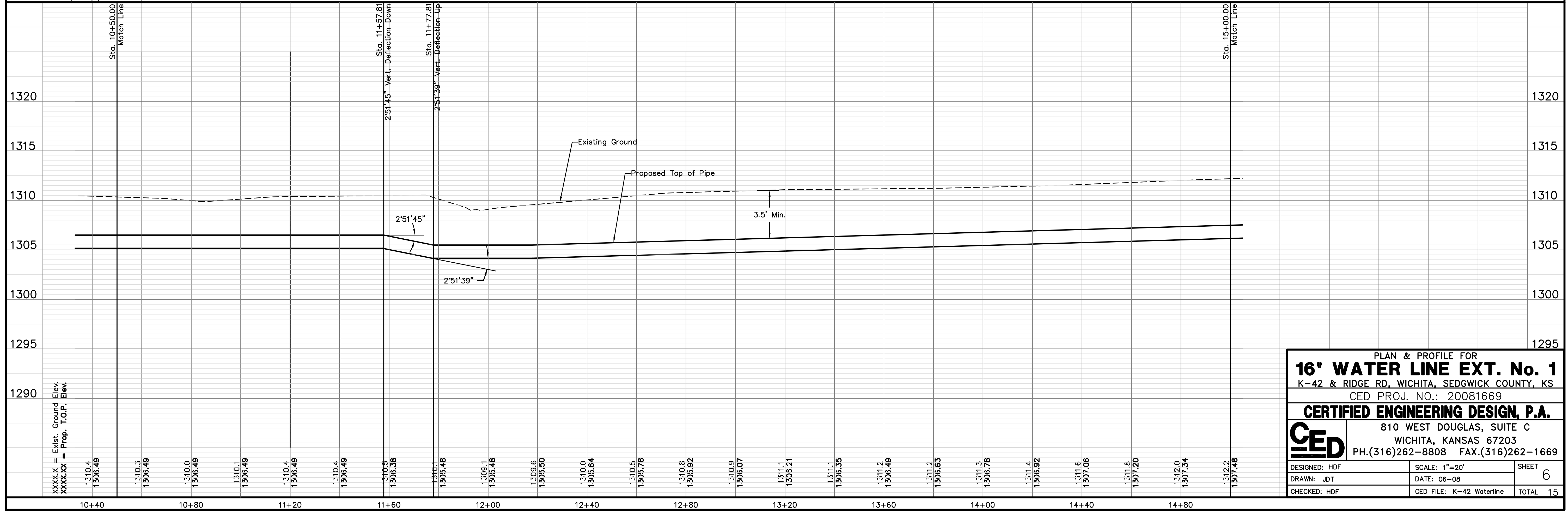
**K-42 HWY
(East Bound Lanes)**

BENCHMARKS:
 BM #3 - Top Brass Plate Concrete Monument 60 feet South and 20 feet East of SW Cor. SE 1/4 Sec. 9, T28S, R1W. Elev.=1302.12
 BM #5 - Found Monument on South end West Bannister of Bridge ± 120 feet North of Ridge and McArthur. Taken from KDOT Proj. #628-22-140 (B-426) Garber No. G2006-196. Adj. Elev.=1299.17 Measured Elev.=1299.34

UTILITIES SHOWN REPRESENT THE BEST INFORMATION AVAILABLE FOR DESIGN. ADDITIONAL UTILITIES MAY BE PRESENT ON THIS PROJECT. THE CONTRACTOR SHALL BE RESPONSIBLE FOR DETERMINING THE EXACT LOCATION, DEPTH AND SIZE OF ALL UNDERGROUND UTILITIES PRIOR TO CONSTRUCTION. THE CONTRACTOR SHALL BE LIABLE FOR ANY DAMAGE CAUSED BY THE FAILURE TO DO SO.

WATER LINE NO. 1

Unless otherwise noted, elevations shown are to top of pipe.



PLAN & PROFILE FOR
16" WATER LINE EXT. No. 1
 K-42 & RIDGE RD, WICHITA, SEDGWICK COUNTY, KS
 CED PROJ. NO.: 20081669
CERTIFIED ENGINEERING DESIGN, P.A.
 810 WEST DOUGLAS, SUITE C
 WICHITA, KANSAS 67203
 PH.(316)262-8808 FAX.(316)262-1669

DESIGNED: HDF	SCALE: 1"=20'	SHEET
DRAWN: JDT	DATE: 06-08	6
CHECKED: HDF	CED FILE: K-42 Waterline	TOTAL 15