

**UTILITY LEGEND**

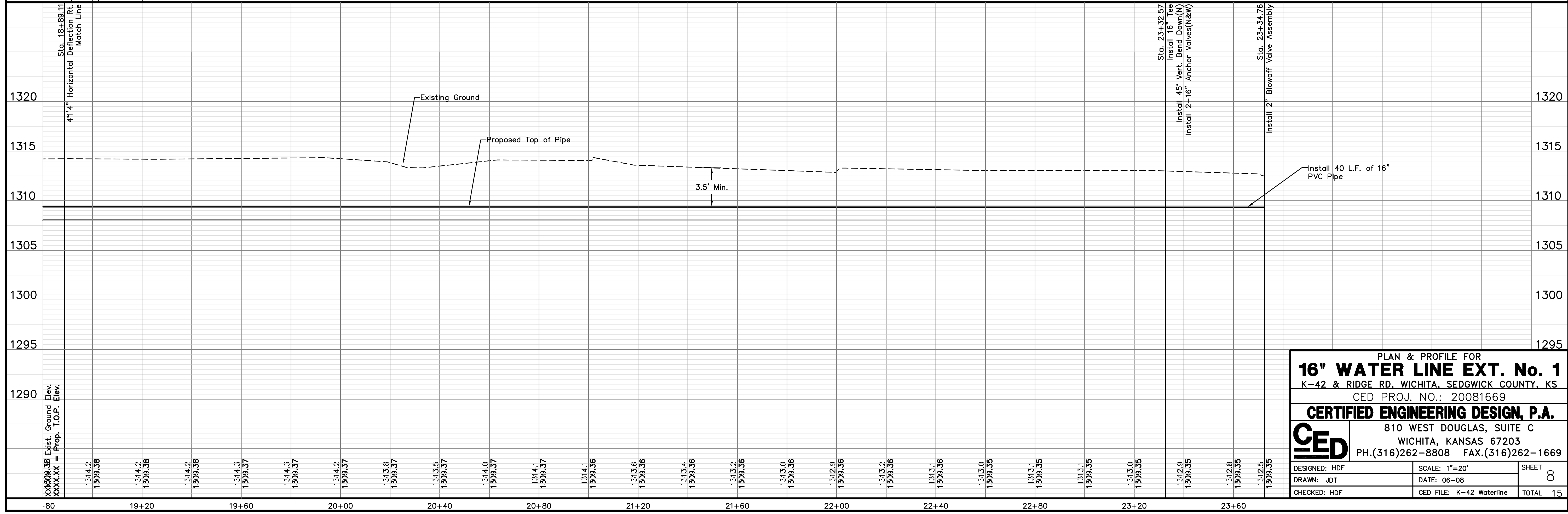
FH = Fire Hydrant	FP = Flag Pole
WM = Water Meter	MH = SS Manhole
WV = Water Valve	SMS = SWS Manhole
GM = Gas Meter	⊗ = Sign
GV = Gas Valve	⊗ = Misc. Post
TR = Telephone Riser	⊗ = Guy Anchor
MB = Mailbox	⊗ = Power Pole
	⊗ = Light Pole
	⊗ = Deciduous Tree or Shrub
	⊗ = Existing Fence
	⊗ = Right of Way Line
	⊗ = Underground Electric
	⊗ = Underground Telephone
	⊗ = Overhead Electric
	⊗ = Water Line
	⊗ = Sanitary Sewer
	⊗ = Gas Line
	⊗ = Cable TV or Fiber Optic

UTILITIES SHOWN REPRESENT THE BEST INFORMATION AVAILABLE FOR DESIGN. ADDITIONAL UTILITIES MAY BE PRESENT ON THIS PROJECT. THE CONTRACTOR SHALL BE RESPONSIBLE FOR DETERMINING THE EXACT LOCATION, DEPTH AND SIZE OF ALL UNDERGROUND UTILITIES PRIOR TO CONSTRUCTION. THE CONTRACTOR SHALL BE LIABLE FOR ANY DAMAGE CAUSED BY THE FAILURE TO DO SO.

**K-42 HWY  
 (East Bound Lanes)  
 WATER LINE NO. 1**

BENCHMARKS:  
 BM #3 - Top Brass Plate Concrete Monument 60 feet South and 20 feet East of SW Cor. SE 1/4 Sec. 9, T28S, R1W. Elev.=1302.12  
 BM #5 - Found Monument on South end West Bannister of Bridge ± 120 feet North of Ridge and McArthur. Taken from KDOT Proj. #628-22-140 (B-426) Adj. Elev.=1299.17 Measured Elev.=1299.34

Unless otherwise noted, elevations shown are to top of pipe.



PLAN & PROFILE FOR  
**16" WATER LINE EXT. No. 1**  
 K-42 & RIDGE RD, WICHITA, SEDGWICK COUNTY, KS  
 CED PROJ. NO.: 20081669  
**CERTIFIED ENGINEERING DESIGN, P.A.**  
 810 WEST DOUGLAS, SUITE C  
 WICHITA, KANSAS 67203  
 PH.(316)262-8808 FAX.(316)262-1669

DESIGNED: HDF	SCALE: 1"=20'	SHEET
DRAWN: JDT	DATE: 06-08	8
CHECKED: HDF	CED FILE: K-42 Waterline	TOTAL 15