

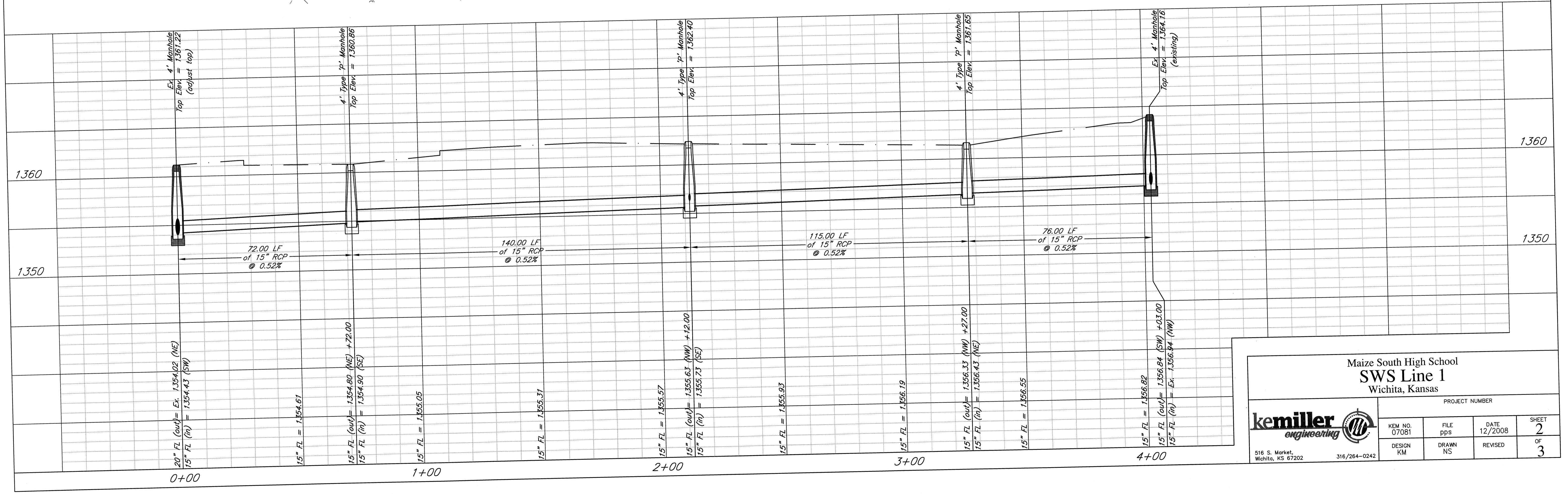
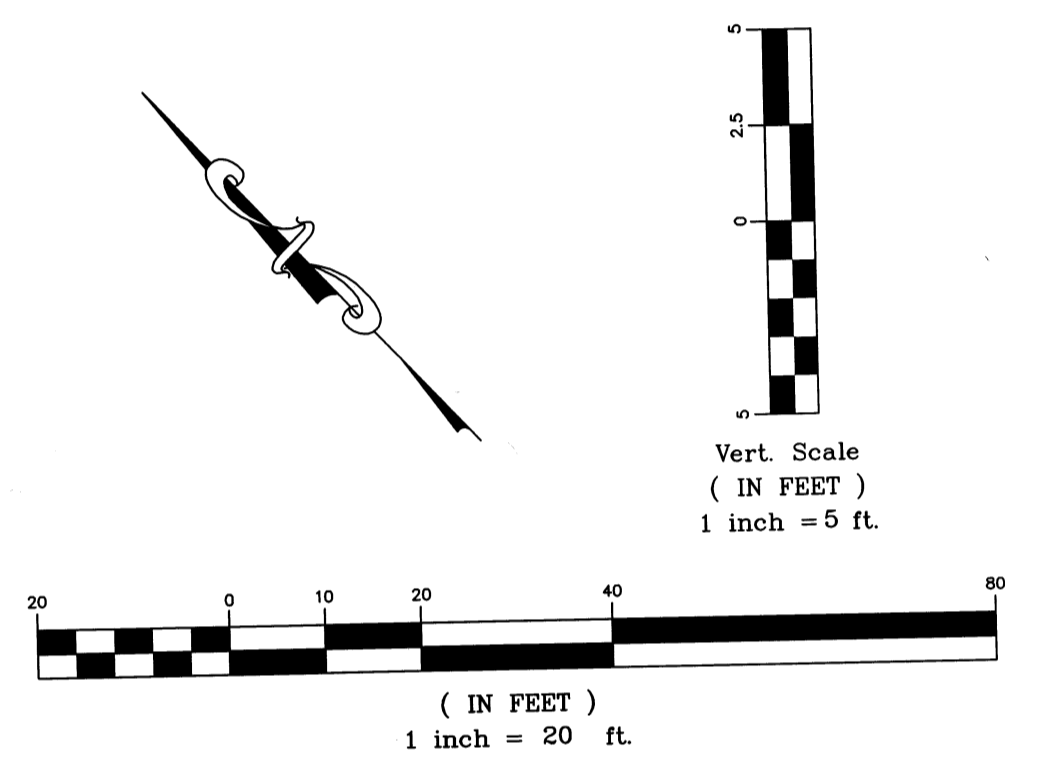
SWS Sta. 00+00.00 Line 1
 Adjust MH Top = 1361.22
 15" FL (in) = Ex. 1354.19 (SE)
 15" FL (in) = Ex. 1354.43 (SW)
 20" FL (out) = Ex. 1354.02 (NE)
 N= 9561.60, E= 10507.49

SWS Sta. 04+03.00 Line 1
 Ex. MH Top = 1364.16
 10" FL (in) = Ex. 1358.72 (NE)
 10" FL (in) = Ex. 1358.16 (SE)
 15" FL (in) = Ex. 1357.04 (S)
 15" FL (in) = Ex. 1356.94 (NW)
 15" FL (out) = Pr. 1356.84 (SW)
 N= 9360.43, E= 10716.55

SWS Sta. 00+72.00 Line 1
 1- 4" Type 'P' Manhole
 Top Elev. = 1360.86
 15" FL (in) = 1354.90 (SE)
 15" FL (out) = 1354.80 (NE)
 N= 9508.19, E= 10459.20

SWS Sta. 02+12.00 Line 1
 1- 4" Type 'P' Manhole
 Top Elev. = 1362.40
 8" FL (in) = 1356.32 (NE)
 15" FL (in) = 1355.73 (SE)
 15" FL (out) = 1355.63 (NW)
 N= 9412.49, E= 10561.39

SWS Sta. 03+27.00 Line 1
 1- 4" Type 'P' Manhole
 Top Elev. = 1361.65
 15" FL (in) = 1356.43 (NE)
 15" FL (out) = 1356.33 (NW)
 N= 9333.88, E= 10645.33



Ex. 4" Manhole
 Top Elev. = 1361.22
 (adjust top)

4" Type 'P' Manhole
 Top Elev. = 1360.86

4" Type 'P' Manhole
 Top Elev. = 1362.40

4" Type 'P' Manhole
 Top Elev. = 1361.65

Ex. 4" Manhole
 Top Elev. = 1364.16
 (existing)

72.00 LF
 of 15" RCP
 @ 0.52%

140.00 LF
 of 15" RCP
 @ 0.52%

115.00 LF
 of 15" RCP
 @ 0.52%

76.00 LF
 of 15" RCP
 @ 0.52%

20" FL (out) = Ex. 1354.02 (NE)
 15" FL (in) = 1354.43 (SW)

15" FL = 1354.61

15" FL (out) = 1354.80 (NE) +72.00
 15" FL (in) = 1354.90 (SE)

15" FL = 1355.05

15" FL = 1355.31

15" FL = 1355.57

15" FL (out) = 1355.63 (NW) +12.00
 15" FL (in) = 1355.73 (SE)

15" FL = 1355.93

15" FL = 1356.19

15" FL (out) = 1356.33 (NW) +27.00
 15" FL (in) = 1356.43 (NE)

15" FL = 1356.55

15" FL = 1356.82
 15" FL (out) = 1356.84 (SW) +03.00
 15" FL (in) = Ex. 1356.94 (NW)

Maize South High School
 SWS Line 1
 Wichita, Kansas

PROJECT NUMBER

KEM NO. 07081	FILE pps	DATE 12/2008	SHEET 2
DESIGN KM	DRAWN NS	REVISED	OF 3

516 S. Market
 Wichita, KS 67202 316/264-0242