

VILLAGE AT GREENWICH ADDITION

PAVING PLANS FOR SIDEWALK - PHASE 1

AN ADDITION TO THE CITY OF WICHITA
SEDGWICK COUNTY, KANSAS

PROJECT NO. 472-84757

JIM ARMOUR, P.E., ACTING CITY ENGINEER

OCA - 766228

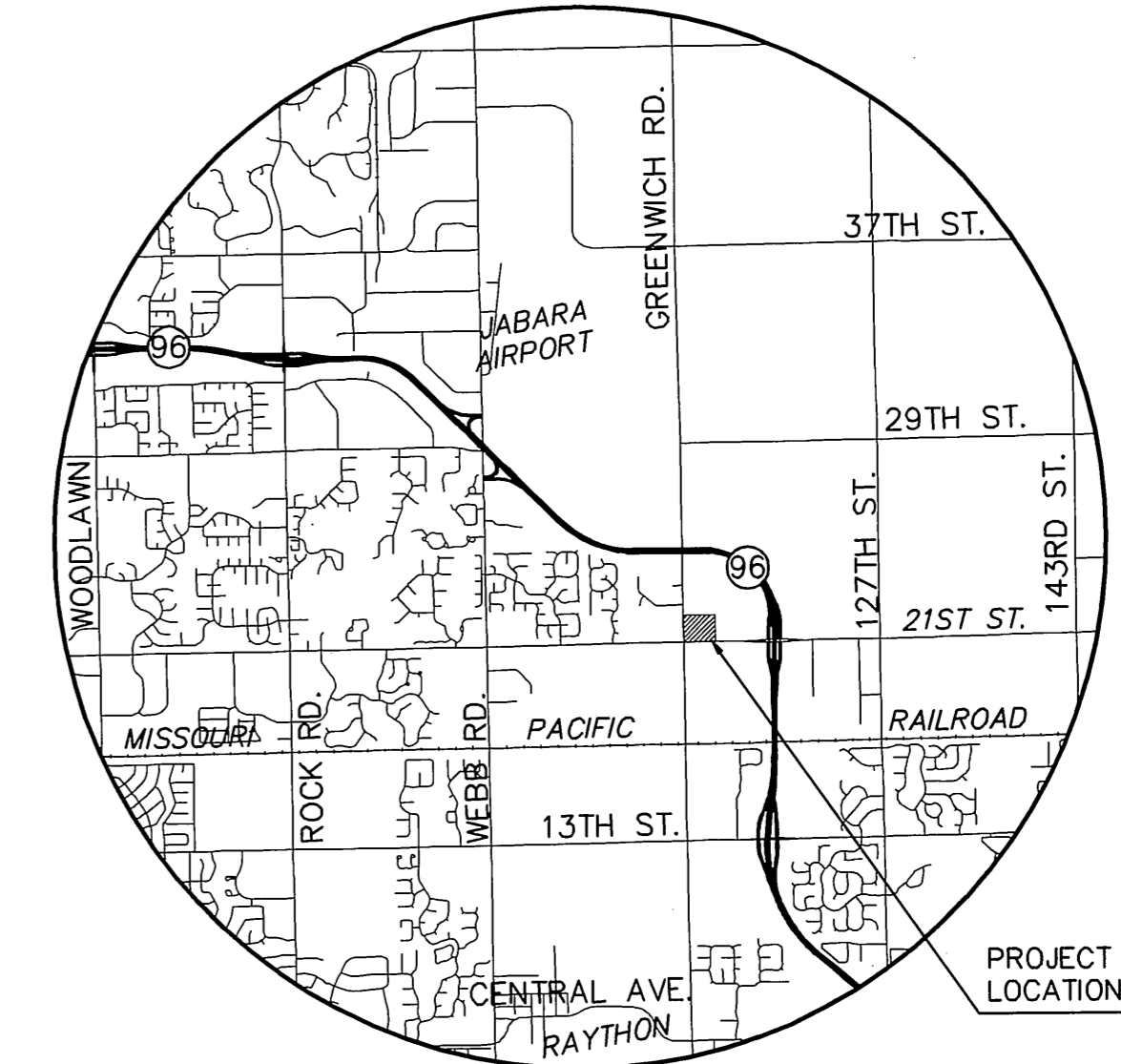
GENERAL NOTES

- UNLESS SHOWN OR STATED OTHERWISE ON THESE DRAWINGS, MATERIALS AND CONSTRUCTION SHALL BE IN ACCORDANCE WITH CITY OF WICHITA CONCRETE PAVEMENT AND ASPHALTIC CONCRETE PAVEMENT SPECIFICATIONS.
- CONTRACTOR WILL BE REQUIRED TO PROVIDE A MINIMUM ADVANCE NOTICE OF SEVENTY-TWO (72) HOURS TO UTILITY COMPANIES PRIOR TO STARTING ANY EXCAVATION AS FOLLOWS:
KANSAS ONE-CALL 1-800-344-7233
OR 687-2470 (LOCAL WICHITA)

THE CONTRACTOR MUST NOTIFY THE FOLLOWING IN CASE OF AN EMERGENCY:

AT&T (TELEPHONE)	800-870-8390
COX COMMUNICATIONS (CABLE)	263-0661
KANSAS GAS SERVICE (GAS)	832-3101
CITY OF WICHITA WATER & SEWER	262-6000
WESTAR (ELECTRIC)	383-8600
BLACK HILLS ENERGY (GAS)	800-303-0357

- THE CONTRACTOR SHALL BE RESPONSIBLE FOR PRESERVING PROPERTY IRONS. THE CONTRACTOR WILL BE REQUIRED TO RE-ESTABLISH ANY PROPERTY IRONS WHICH ARE DAMAGED OR DESTROYED BY HIS CONSTRUCTION OPERATIONS. SUCH IRONS SHALL BE RE-ESTABLISHED BY A LICENSED LAND SURVEYOR IN ACCORDANCE WITH STATE LAWS.
- EXISTING UTILITIES AND THEIR LOCATIONS, AS SHOWN ON THE PLANS REPRESENT THE BEST INFORMATION OBTAINABLE FOR DESIGN. LOCATION INFORMATION HAS BEEN OBTAINED FROM THE VARIOUS UTILITY COMPANIES AND IS EITHER FROM COMPANY RECORD DRAWINGS OR COMPANY PROVIDED FIELD LOCATIONS. THE PLAN LOCATIONS SHOWN ARE NOT GUARANTEED. ADDITIONAL EXISTING UTILITIES MAY ALSO BE ENCOUNTERED.
- RUBBLE FROM THE REMOVAL OF MISCELLANEOUS STRUCTURES AND EXCESS EXCAVATION WHICH IS TO BE WASTED SHALL BE DISPOSED OF ON SITES TO BE PROVIDED BY THE CONTRACTOR. THESE SITES SHALL BE APPROVED BY THE ENGINEER AS TO SUITABILITY, APPEARANCE AND SITE LOCATION. LOCATIONS THAT, IN THE OPINION OF THE ENGINEER, WILL LEAVE AN UNSIGHTLY APPEARANCE WILL NOT BE APPROVED. ALL DISPOSAL SITES MUST BE APPROVED BY THE KANSAS DEPARTMENT OF HEALTH AND ENVIRONMENT. MATERIAL EITHER STOCKPILED OR DISPOSED OF IN A FLOOD PLAIN WOULD REQUIRE A KANSAS STATE BOARD OF AGRICULTURE PERMIT. ANY MATERIAL DUMPED IN WATERS OF THE UNITED STATES OR WETLANDS IS SUBJECT TO U.S. CORPS OF ENGINEERS PERMITTING REGULATIONS. ANY MATERIAL BURIED OR STOCKPILED BEYOND APPROVED CONSTRUCTION LIMITS WOULD REQUIRE ADDITIONAL ARCHAEOLOGICAL INVESTIGATIONS UNLESS BURIED IN A PREVIOUSLY APPROVED BORROW LOCATION.
- A 6" LAYER OF TOPSOIL IS TO BE PLACED OVER ALL AREAS WHERE THE VIRGIN GRADE NO LONGER EXISTS WITH THE EXCEPTION OF PAVED AREAS. THIS INCLUDES BERMS, SWALES AND SLOPES. NOTE: THE FINISHED GRADE INDICATES THE SURFACE ELEVATION AFTER THE 6" LAYER OF TOPSOIL HAS BEEN PLACED.
- ALIGNMENT OF SIDEWALK TO BE APPROVED BY MKEC PRIOR TO CONSTRUCTION.
- EQUIPMENT AND CONSTRUCTION MATERIALS SHALL REMAIN OUT OF AND AWAY FROM TREE DRILINES SO AS TO NOT COMPACT THE ROOT ZONE OR DAMAGE THE TREE. CHEMICAL SPILL DAMAGE SHALL BE PREVENTED BY FILLING GAS TANKS, CLEANING TOOLS & REPAIRING EQUIPMENT WELL OUTSIDE TREE PROTECTED ROOT ZONES. MIXING TRUCKS SHALL BE RINSED OUT OFF SITE. WHERE IT OCCURS THAT A CONSTRUCTION ROUTE OR A PROPOSED IMPROVEMENT OCCURS WITHIN A TREE'S PROTECTED ROOT ZONE, IT MAY BE NECESSARY, DEPENDENT UPON THE TYPE OF CONSTRUCTION AND EQUIPMENT USED, TO INSTALL A ROOT PROTECTION BRIDGE OR APPROVED EQUIVALENT. THIS MAY BE DETERMINED IN THE FIELD AT THE DIRECTION OF THE LANDSCAPE ARCHITECT (REFER TO DETAIL SHEET 2). IT MAY BE NECESSARY TO BRING CONCRETE IN WITH SMALLER EQUIPMENT IN AREAS WHERE LARGER TRUCKS WOULD CAUSE DAMAGE.
- EROSION CONTROL IS TO MEET ALL FEDERAL, STATE, COUNTY & LOCAL CODE STANDARDS.
- CONTRACTOR SHALL SEED ALL DISTURBED AREAS WITH AN ANNUAL RYE GRASS AT A RATE OF 250LBS./ACRE.
- ALL SEED SHALL BE DISTRIBUTED WITH AN ACCEPTABLE DRILL INTENDED FOR SUCH OPERATIONS, OR OTHER EQUIPMENT APPROVED BY THE OWNER'S REPRESENTATIVE. SEEDING DEPTH SHALL BE 1/4".
- ALL SEEDING AREAS SHALL BE IMMEDIATELY MULCHED W/PRAIRIE HAY AT 2 TONS/ACRE. ANCHOR MULCH BY CRIMPING INTO TOPSOIL WITH SUITABLE MECHANICAL EQUIPMENT.



VICINITY MAP

INDEX TO DRAWINGS

SHEET NO.	DESCRIPTION
1	TITLE SHEET
2	WHEELCHAIR RAMP DETAILS
3	SIDEWALK PLAN
4-8	EROSION CONTROL DETAILS

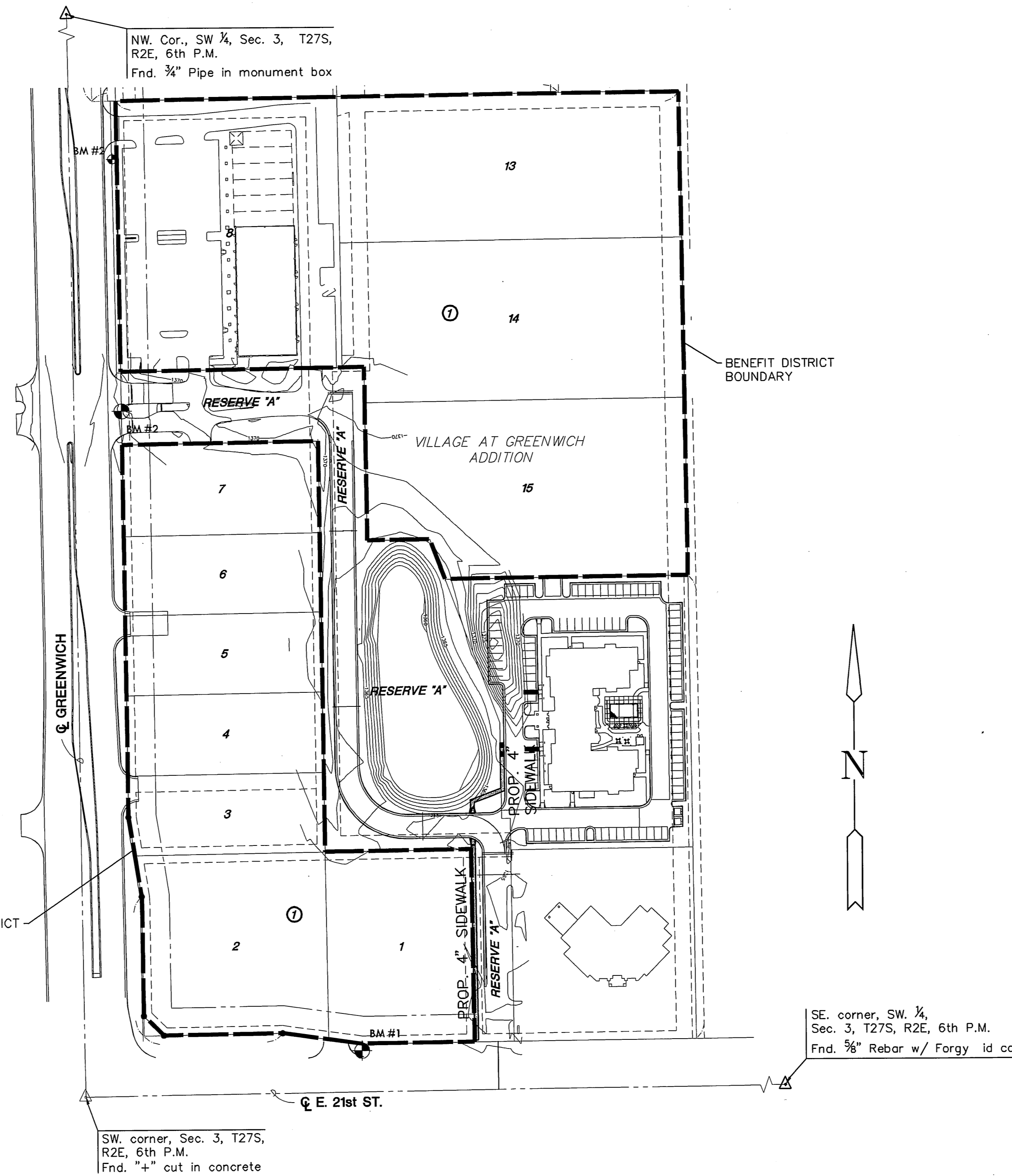
LENGTH OF PROJECT
5' WALK 368 L.F.

* EARTHWORK SUMMARY
EXCAVATION 50 C.Y.
COMPACTED FILL 150 C.Y.

* FOR INFORMATION ONLY
IMPORTED FILL 100 C.Y.
(CONTRACTOR PROVIDED)

BENCHMARKS

- BM#1 "+\" CUT - TOP OF WALK 349.9' EAST OF THE CENTERLINE OF GREENWICH ROAD & 60' NORTH OF THE CENTERLINE OF 21ST STREET ELEV.=1364.41 (NGVD 29)
- BM#2 " " TC W. END OF ISLAND AT THE ENTRANCE TO THE VILLAGE @ GREENWICH E. OF TARGET ENTRANCE ELEV.=1367.98 (NGVD 29)



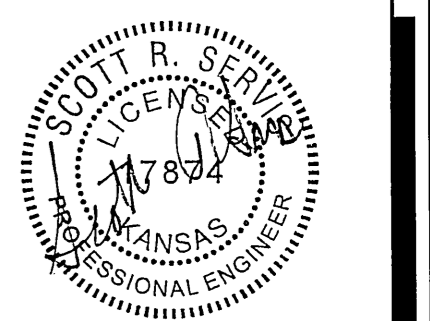
NW. Cor., SW 1/4, Sec. 3, T27S, R2E, 6th P.M.
Fnd. 3/4" Pipe in monument box

SE. corner, SW 1/4, Sec. 3, T27S, R2E, 6th P.M.
Fnd. 3/8" Rebar w/ Forgy id cap

SW. corner, Sec. 3, T27S, R2E, 6th P.M.
Fnd. "+" cut in concrete

MKEC
ENGINEERING
CONSULTANTS, INC.

411 N. WEBB ROAD
WICHITA, K.S. 67206
316-684-9600



2/12/09

PAVING PLANS FOR SIDEWALK
VILLAGE AT
GREENWICH ADDITION

TITLE SHEET

SHEET TITLE
472-84757
PROJECT NUMBER

SRS / MKEC / JTC
DESIGNED DRAWN CHECKED

ISSUED
Feb-09
REVISED

SHEET NO.
1 of 8