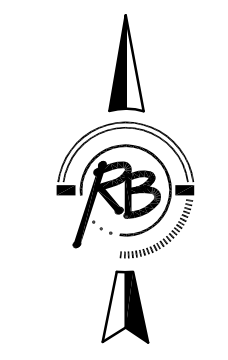
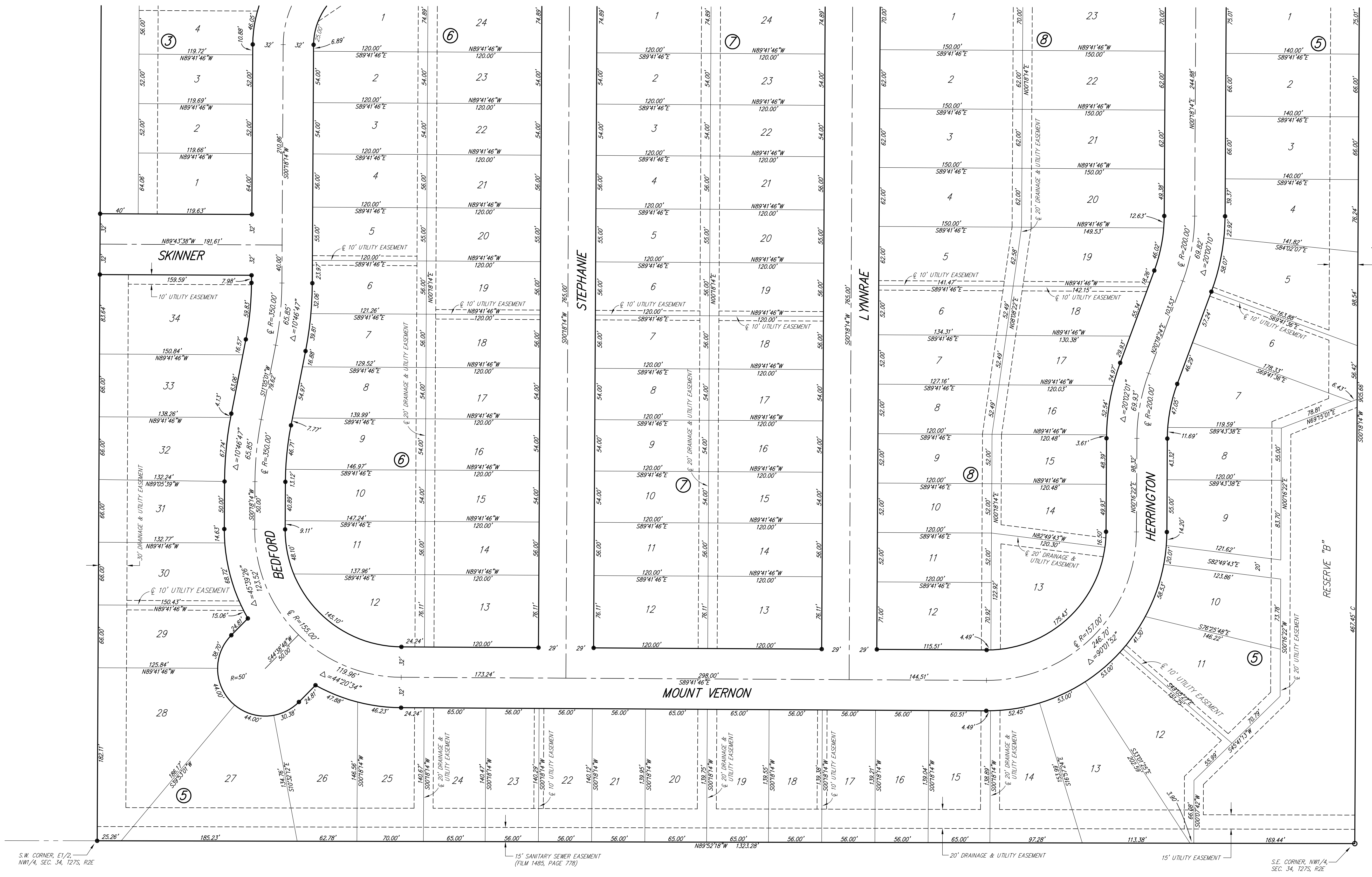


WILLOW CREEK EAST 2nd ADDITION

Wichita, Sedgwick County, Kansas



1" = 50'
M = Measured
A = Assumed

SURVEY MARKER LEGEND

- ⊙ 1/2" IRON PIPE (FOUND)
- ⊙ 3/4" IRON PIPE (FOUND)
- ⊙ PK NAIL (FOUND)
- ⊙ 5/8" REBAR W/RUGGLES & BOHM CAP (FOUND)
- ⊙ 5/8" REBAR W/RUGGLES & BOHM CAP (SET)

BENCH MARK: SRB BRASS DISC 55.45' E. & 5.13' S. OF THE N.W. COR., SW1/4, SEC. 35, T27S, R2E ELEVATION = 1348.35 (NGVD29)

ON-SITE BENCH MARK: R&B BRASS DISC SET IN CONCRETE, 70' S. AND 10' W. OF THE N.E. COR., NW1/4, SEC. 34, T27S, R2E ELEVATION = 1331.77 (NGVD29)

BLOCK	LOT NO.	ELEVATION (NGVD29)
3	54, 55, 56, 57, 58, 59, 60, 61, 62	1331.0
5	7, 8, 9, 10, 11, 12	1341.5

