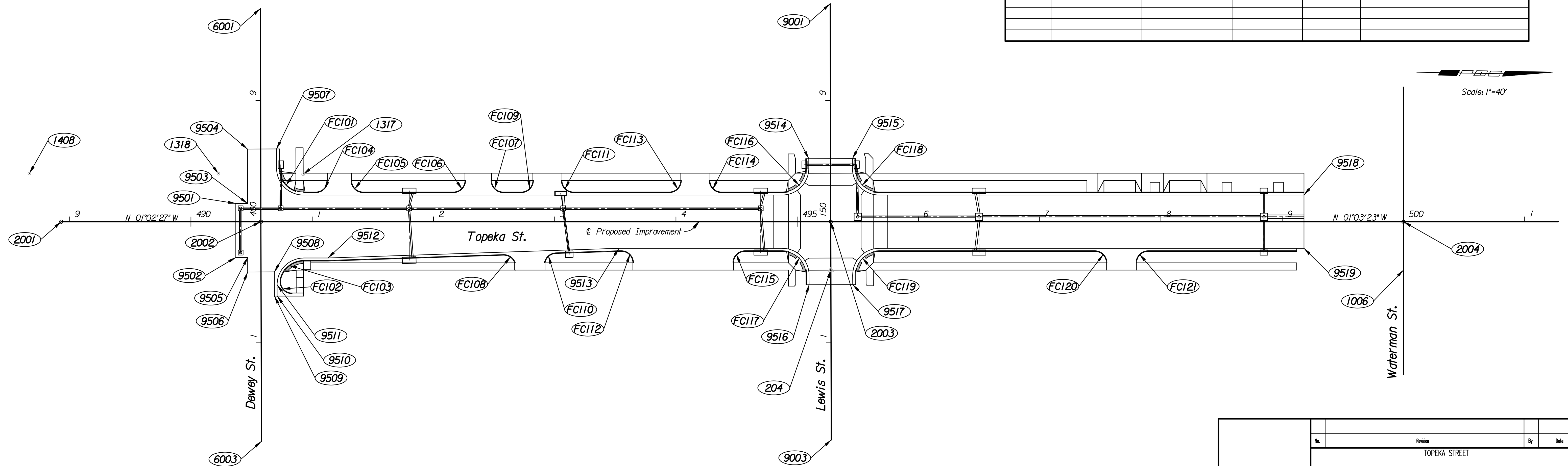


COORDINATE TABLE					
POINT NO.	NORTH COORDINATE	EAST COORDINATE	STATION	OFFSET	DESCRIPTION
1005	1,684,289.1968	1,649,339.1044	107+92.24	0.00' Rt.	Waterman & P.I.
1006	1,684,296.2847	1,649,719.1482	111+72.35	0.00' Rt.	Waterman & P.I.
1007	1,684,311.2790	1,650,479.2979	119+32.65	0.00' Rt.	Waterman & P.I.
2001	1,683,188.7561	1,649,699.2609	488+93.03	0.00' Rt.	Topeka & P.I.
2002	1,683,353.3868	1,649,696.2703	490+57.69	0.00' Rt.	Topeka & P.I.
2003	1,683,823.3088	1,649,687.7337	495+27.69	0.00' Rt.	Topeka & P.I.
2004	1,684,295.5388	1,649,679.1552	500+00.00	0.00' Rt.	Topeka & P.I.
2005	1,684,730.3909	1,649,671.1373	504+34.93	0.00' Rt.	Topeka & P.I.
6001	1,683,349.9081	1,649,520.3146	398+24.01	0.00' Rt.	Dewey & P.I.
6003	1,683,357.1173	1,649,877.5069	401+81.28	0.00' Rt.	Dewey & P.I.
9001	1,683,819.5992	1,649,507.9087	148+20.14	0.00' Rt.	Lewis & P.I.
9003	1,683,827.0178	1,649,867.8346	151+80.14	0.00' Rt.	Lewis & P.I.
9501	1,683,332.4252	1,649,681.6486	490+37.00	15.00' Lt.	Edge of Pavement
9502	1,683,333.2335	1,649,726.1412	490+37.00	29.50' Rt.	Edge of Pavement
9503	1,683,342.0921	1,649,681.4730	490+46.67	15.00' Lt.	Edge of Pavement
9504	1,683,341.2030	1,649,636.4994	490+46.60	59.98' Lt.	Edge of Pavement
9505	1,683,342.9957	1,649,725.9639	490+46.76	29.50' Rt.	Edge of Pavement
9506	1,683,343.2432	1,649,737.9878	490+46.79	41.53' Rt.	Edge of Pavement
9507	1,683,365.1983	1,649,636.0250	490+70.60	60.02' Lt.	Edge of Pavement / Edge of Curb
9508	1,683,365.2385	1,649,737.5351	490+68.79	41.47' Rt.	Edge of Pavement
9509	1,683,365.6501	1,649,757.5309	490+68.84	61.47' Rt.	Edge of Pavement
9510	1,683,367.8996	1,649,757.4846	490+71.09	61.47' Rt.	Edge of Pavement / Edge of Curb
9511	1,683,367.7059	1,649,748.0719	490+71.07	52.05' Rt.	Edge of Pavement / Edge of Curb
9512	1,683,409.2300	1,649,725.2608	491+13.00	30.00' Rt.	Edge of Pavement / Edge of Curb
9513	1,683,649.0451	1,649,712.9030	493+53.00	22.00' Rt.	Edge of Pavement / Edge of Curb
9514	1,683,804.2379	1,649,636.1157	495+09.56	51.96' Lt.	Edge of Pavement / Edge of Curb
9515	1,683,840.2302	1,649,635.3739	495+45.56	52.04' Lt.	Edge of Pavement / Edge of Curb
9516	1,683,806.3810	1,649,740.0936	495+09.82	52.04' Rt.	Edge of Pavement / Edge of Curb
9517	1,683,842.3734	1,649,739.3518	495+45.82	51.96' Rt.	Edge of Pavement / Edge of Curb
9518	1,684,213.1527	1,649,658.6482	499+18.00	22.00' Lt.	Edge of Pavement / Edge of Curb
9519	1,684,213.9519	1,649,702.6409	499+18.00	22.00' Rt.	Edge of Pavement / Edge of Curb

CURVE DATA													
NO.	Δ	R	T	L	E	P.C. COORDINATES		P.I. COORDINATES		P.T. COORDINATES		C.C. COORDINATES	
						NORTH	EAST	NORTH	EAST	NORTH	EAST	NORTH	EAST
FC101	89°54'30" Lt.	20'	19.97'	31.38'	8.26'	1,683,367.5152	1,649,652.0384	1,683,367.9099	1,649,672.0025	1,683,387.8746	1,649,671.6398	1,683,387.5113	1,649,651.6431
FC102	104°59'00" Rt.	10'	13.03'	18.32'	6.42'	1,683,380.1958	1,649,755.2310	1,683,367.1703	1,649,755.4991	1,683,370.2788	1,649,742.8471	1,683,379.9900	1,649,745.2332
FC103	75°09'20" Rt.	20'	15.39'	26.23'	5.24'	1,683,370.2788	1,649,742.8472	1,683,373.9507	1,649,727.9020	1,683,389.3379	1,649,727.6225	1,683,389.7012	1,649,747.6192
FC104	90°00'00" Lt.	10'	10'	15.71'	4.14'	1,683,398.2509	1,649,671.4513	1,683,408.2492	1,649,671.2697	1,683,408.0676	1,649,661.2713	1,683,398.0692	1,649,661.4530
FC105	90°00'00" Lt.	10'	10'	15.71'	4.14'	1,683,427.0644	1,649,660.9262	1,683,427.2461	1,649,670.9246	1,683,437.2444	1,649,670.7429	1,683,437.0628	1,649,660.7446
FC106	90°00'00" Lt.	10'	10'	15.71'	4.14'	1,683,511.7321	1,649,669.3898	1,683,521.7305	1,649,669.2082	1,683,521.5489	1,649,659.2098	1,683,511.5505	1,649,659.3915
FC107	90°00'00" Lt.	10'	10'	15.71'	4.14'	1,683,542.5454	1,649,658.8284	1,683,542.7270	1,649,668.8268	1,683,552.7254	1,649,668.6451	1,683,552.5437	1,649,658.6468
FC108	72°24'18" Rt.	10'	7.32'	12.64'	2.39'	1,683,553.8669	1,649,719.8102	1,683,561.1767	1,649,719.4335	1,683,563.7455	1,649,726.2875	1,683,554.3815	1,649,729.7970
FC109	90°00'00" Lt.	10'	10'	15.71'	4.14'	1,683,567.7229	1,649,668.3727	1,683,577.7212	1,649,668.1911	1,683,577.5396	1,649,658.1927	1,683,567.5413	1,649,658.3743
FC110	77°36'25" Rt.	10'	8.04'	13.55'	2.83'	1,683,587.7799	1,649,725.9269	1,683,589.0992	1,649,717.9947	1,683,597.1298	1,649,717.5809	1,683,597.6444	1,649,727.5676
FC111	90°00'00" Lt.	10'	10'	15.71'	4.14'	1,683,600.5358	1,649,657.7750	1,683,600.7175	1,649,667.7733	1,683,610.7158	1,649,667.5917	1,683,610.5342	1,649,657.5933
FC112	90°00'00" Rt.	10'	10'	15.71'	4.14'	1,683,651.0811	1,649,714.8663	1,683,661.0795	1,649,714.6847	1,683,661.2611	1,649,724.6830	1,683,651.2627	1,649,724.8647
FC113	90°00'00" Lt.	10'	10'	15.71'	4.14'	1,683,689.7028	1,649,666.1568	1,683,699.7011	1,649,665.9752	1,683,699.5195	1,649,655.9768	1,683,689.5211	1,649,656.1585
FC114	90°00'00" Lt.	10'	10'	15.71'	4.14'	1,683,722.5157	1,649,655.5591	1,683,722.6973	1,649,665.5574	1,683,732.6957	1,649,665.3758	1,683,732.5141	1,649,655.3775
FC115	90°00'00" Rt.	10'	10'	15.71'	4.14'	1,683,743.2476	1,649,723.1937	1,683,743.0659	1,649,713.1953	1,683,753.0643	1,649,713.0137	1,683,753.2459	1,649,723.0121
FC116	90°08'24" Lt.	20'	20.05'	31.46'	8.32'	1,683,782.7686	1,649,664.4662	1,683,802.8143	1,649,664.1020	1,683,802.4011	1,649,644.0573	1,683,782.4054	1,649,644.4695
FC117	89°51'36" Rt.	20'	19.95'	31.37'	8.25'	1,683,783.8556	1,649,712.4544	1,683,803.8034	1,649,712.0920	1,683,804.2146	1,649,732.0389	1,683,784.2188	1,649,732.4511
FC118	89°51'36" Lt.	20'	19.95'	31.37'	8.25'	1,683,842.3967	1,649,643.4286	1,683,842.8078	1,649,663.3755	1,683,862.7557	1,649,663.0131	1,683,862.3924	1,649,643.0164
FC119	90°08'24" Rt.	20'	20.05'	31.46'	8.32'	1,683,844.2101	1,649,731.4102	1,683,843.7970	1,649,711.3655	1,683,863.8426	1,649,711.0013	1,683,864.2059	1,649,730.9980
FC120	90°00'00" Rt.	10'	10'	15.71'	4.14'	1,684,041.5167	1,649,707.7737	1,684,051.5150	1,649,707.5921	1,684,051.6967	1,649,717.5904	1,684,041.6983	1,649,717.7721
FC121	90°00'00" Rt.	10'	10'	15.71'	4.14'	1,684,075.6927	1,649,717.1545	1,684,075.5111	1,649,707.1562	1,684,085.5094	1,649,706.9745	1,684,085.6911	1,649,716.9729

CONTROL POINTS					
POINT NO.	NORTH COORDINATE	EAST COORDINATE	STATION	OFFSET	DESCRIPTION
204	1,683,824.1338	1,649,727.7253	495+27.79	40.00' Rt.	Thimble, No Bar
205	1,683,816.2988	1,649,347.9241	495+26.86	339.88' Lt.	1/2" Iron Pipe in Thimble
1317	1,683,387.5328	1,649,656.4651	490+92.56	39.18' Lt.	Property Iron, "x"
1318	1,683,317.6595	1,649,657.3261	490+22.68	39.59' Rt.	Property Iron "x"
1408	1,683,161.8049	1,649,659.9592	488+66.80	39.78' Lt.	Property Iron, "v" cut



Plotted By: svb Date: 2/20/2009 11:03:55 AM  
 FILE: I:\2008\08457\Geometry\08457-cg490.dgn

No.	Revision	By	Date
TOPEKA STREET			
<b>COORDINATE GEOMETRY</b>			
JAMES L. ARMOUR, P.E.—CITY ENGINEER CITY OF WICHITA PROJECT NO. 472-34745			
<b>Professional Engineering Consultants, P.A.</b> 303 S. TOPEKA • WICHITA, KANSAS 67202 316-262-2691 • FAX 316-262-3003			
Designed by	DRM	Job No.	08457
Drawn by	DRP	Date	Feb., 2009
			Sht. R5 of R52