

**GENERAL NOTES**

Existing utilities and their locations, as shown on the plans, represent the best information obtainable for design. Location information has been obtained from record drawings or company provided field locations. The plan locations shown are not guaranteed. Additional existing utilities may also be encountered. The Contractor will be required to work around existing utilities within the right-of-way which do not conflict with proposed construction.

The Contractor shall notify Westar Energy to coordinate enclosure service connection, meter installation, Joint use street light installation and all other activities to complete the traffic signal installation. Fees associated with this work shall be the responsibility of the Contractor.

Existing traffic equipment salvaged and not reused shall be delivered to the City Yard at 1801 McLean Blvd.

Traffic Signal Equipment damaged during removal and re-installation procedures shall be replaced at the Contractor's expense.

The Contractor shall furnish and install all equipment and materials necessary for complete operation of each Traffic Signal system whether specifically mentioned or not.

Sta. 491+61.50, 30.00' Lt.  
Exist. Traffic Signal Pole (J.U.)  
w/ 37' Mast Arm to Remain  
Relocate Signal Head as shown  
Install New R3-5L Sign

Sta. 500+31.50, 47.50' Lt.  
Exist. Traffic Signal Pole (J.U.)  
w/ 28' Mast Arm to Remain

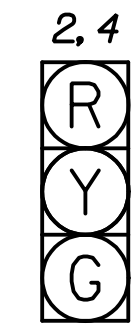
Sta. 499+62.50, 31.00' Rt.  
Exist. Traffic Signal Pole (J.U.)  
W/ 34' Mast Arm to Remain  
Install New R3-2 Sign

Sta. 500+38, 38.00' Rt.  
Exist. Traffic Signal Pole (J.U.)  
Install 34' Mast Arm & Signal Heads  
Retrieve from City Yard  
Install New Street Sign

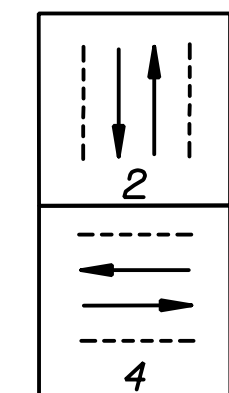
**LEGEND**

- 23' □ Traffic Signal Pole with Mast Arm & Length
- ← Traffic Signal Head
- ← Traffic Signal Head with Backplate
- ⊥ Pedestrian Signal Head
- ⊞ Exist. Pole-Mounted Controller
- Service Box (Pre-Fab)
- U R3-2 Sign
- V R3-5R Sign
- W R3-5L Sign
- - - - - Exist. Rigid Galvanized Conduit (RGC)
- ② Signal Phase
- △ Signal Pole Reference Number
- ⊥ Street Name Sign
- ☀ Luminaire with Arm

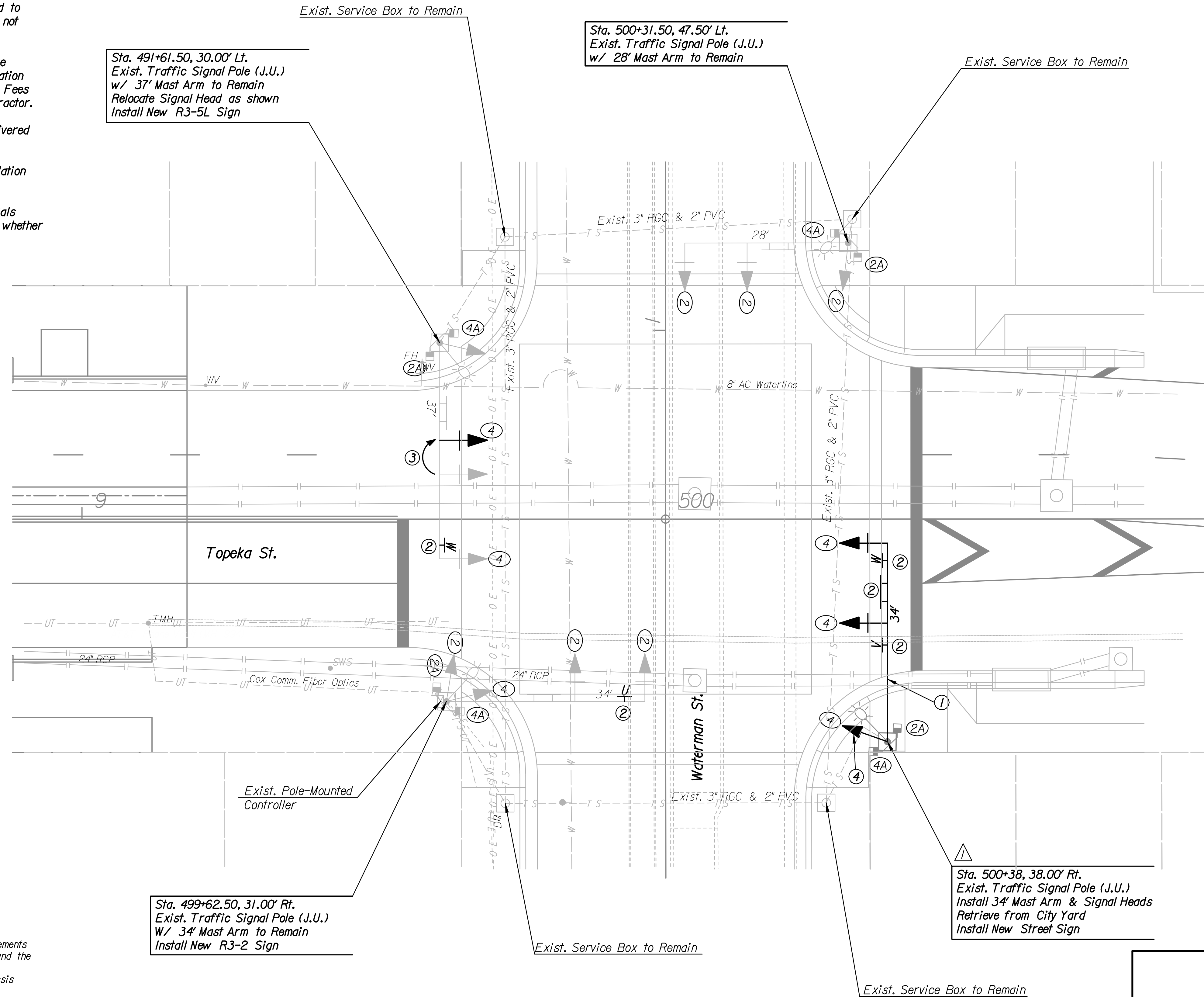
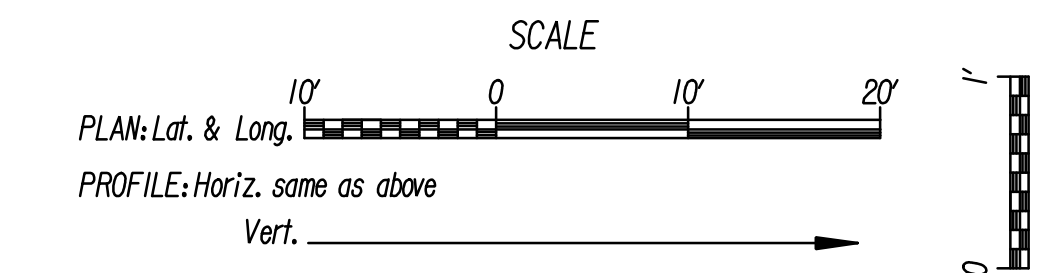
- ① Mast Arm and Traffic Signal Head stored at City Yard.
- ② Install New Sign.
- ③ Relocate Signal Head
- ④ Rotate Signal Head to meet Cone of Vision requirements for Northbound Topeka traffic.



**SIGNAL HEADS**



**PHASE DIAGRAM**



**EQUIPMENT SPECIFICATIONS  
2070 CONTROLLER**

- A. Controller Unit: The 2070L controller supplied shall meet the requirements outlined in CalTrans TEES 2002 (latest revision), and the following requirements:
1. The 2070L controller shall have a 19" EIA rack mountable chassis (mated to the 170 cabinet).
  2. 2070-1B CPU module with RJ-45 Ethernet port.
  3. 2070-2A CI field I/O module for compatibility with CalTrans style CI connector.
  4. 2070-3B 8X40 front panel with LCD display.
  5. 2070-4A 10 amp power supply.
  6. 2070-7A asynchronous serial communications module (RS-232).
  7. Any unused slot position shall have a cover plate.
- B. Conflict Monitor: The Conflict Monitor supplied shall be 2010 ECL conflict monitor.

Plotted By: svb Date: 2/20/2009 4:28:01 PM  
 FILE: I:\2008\08457\Signal\Topeka-Waterman.dgn

No.	Revision	By	Date
TOPEKA STREET			
<b>TRAFFIC SIGNAL PLAN TOPEKA AND WATERMAN</b>			
JAMES L. ARMOUR, P.E.—CITY ENGINEER CITY OF WICHITA PROJECT NO. 472-84745			
<b>Professional Engineering Consultants, P.A.</b> 303 S. TOPEKA • WICHITA, KANSAS 67202 316-262-2691 • FAX 316-262-3003			
Designed by	DRM	Job No.	08457
Drawn by	DRP	Date	Feb., 2009
			Sht. R33 of R52