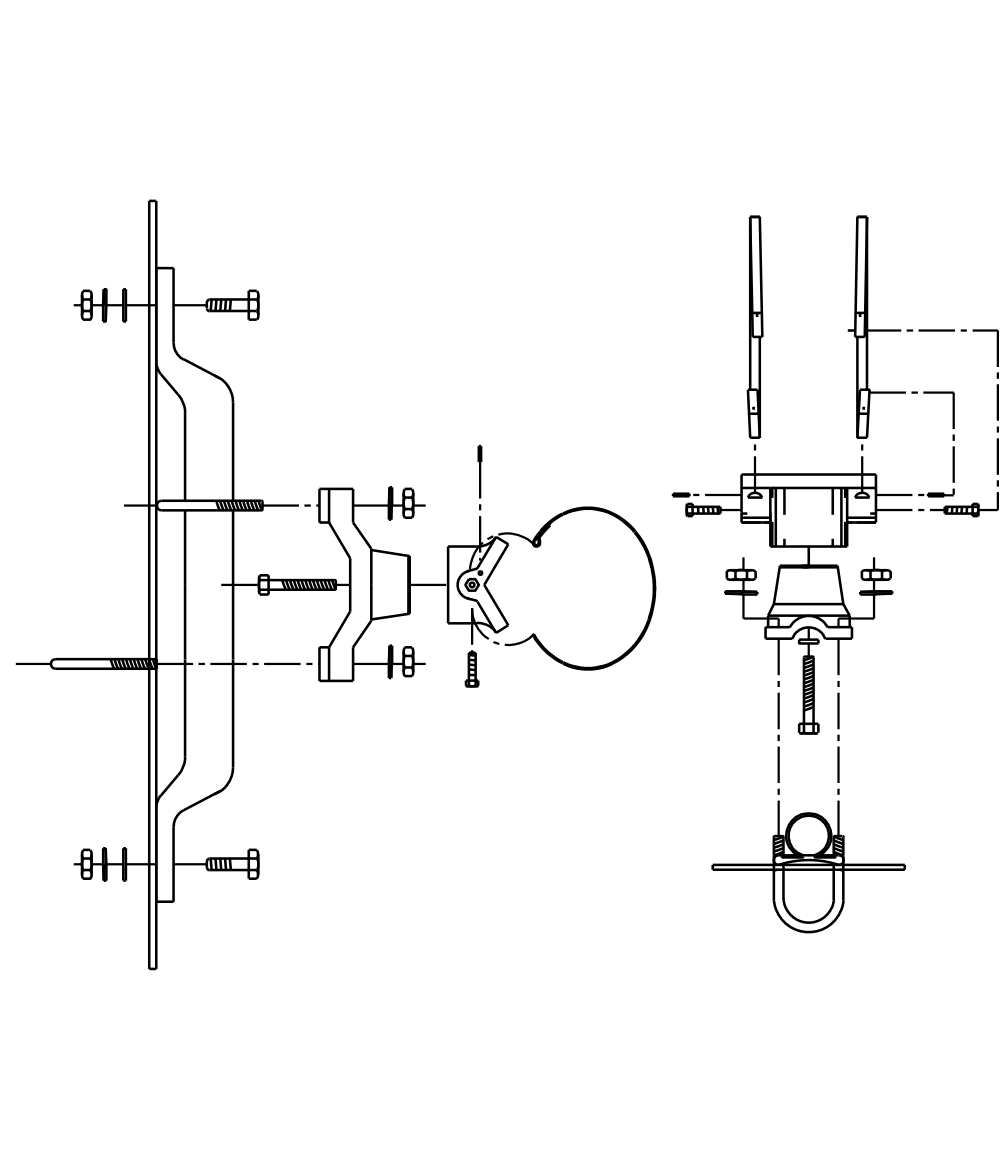
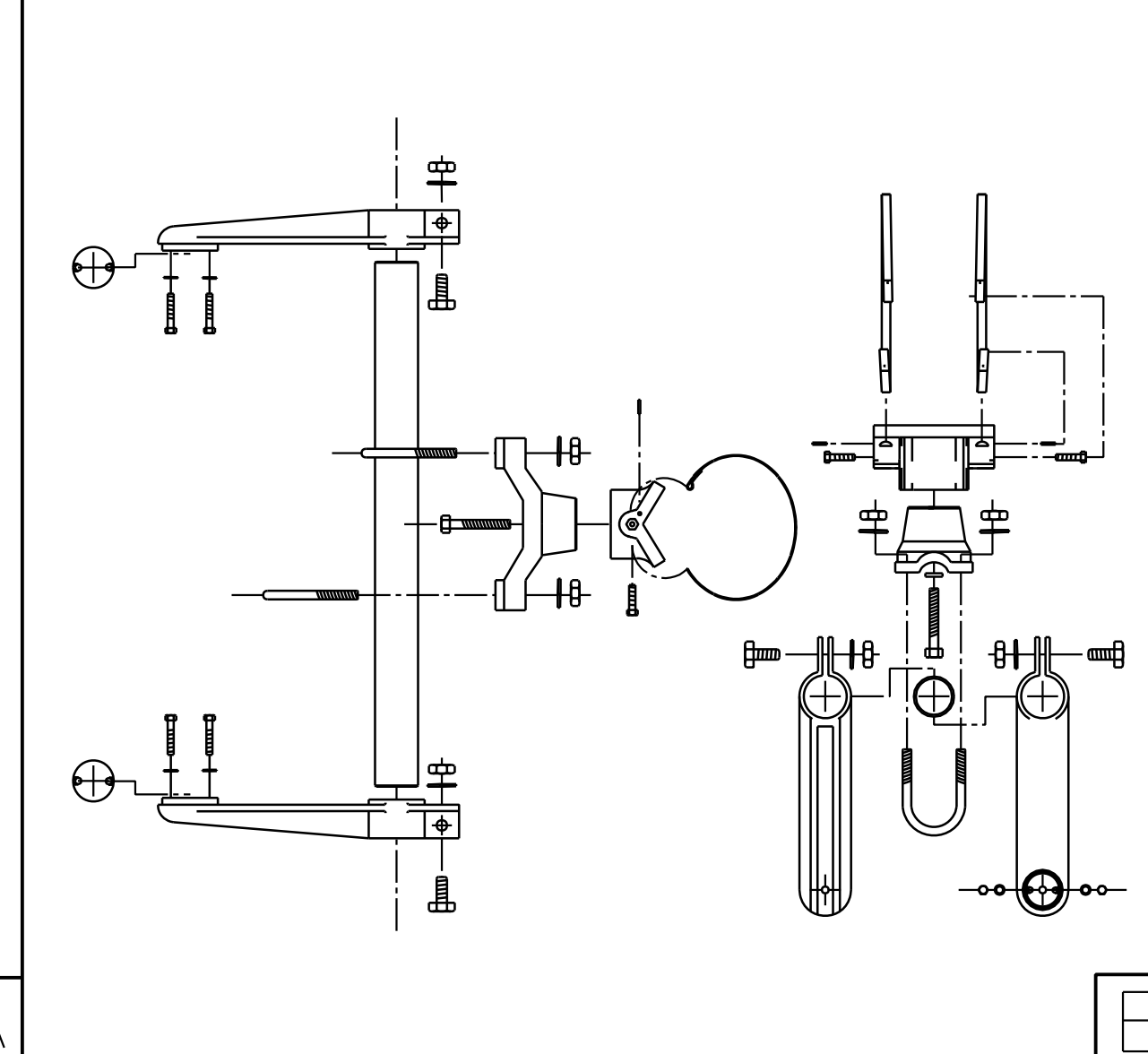


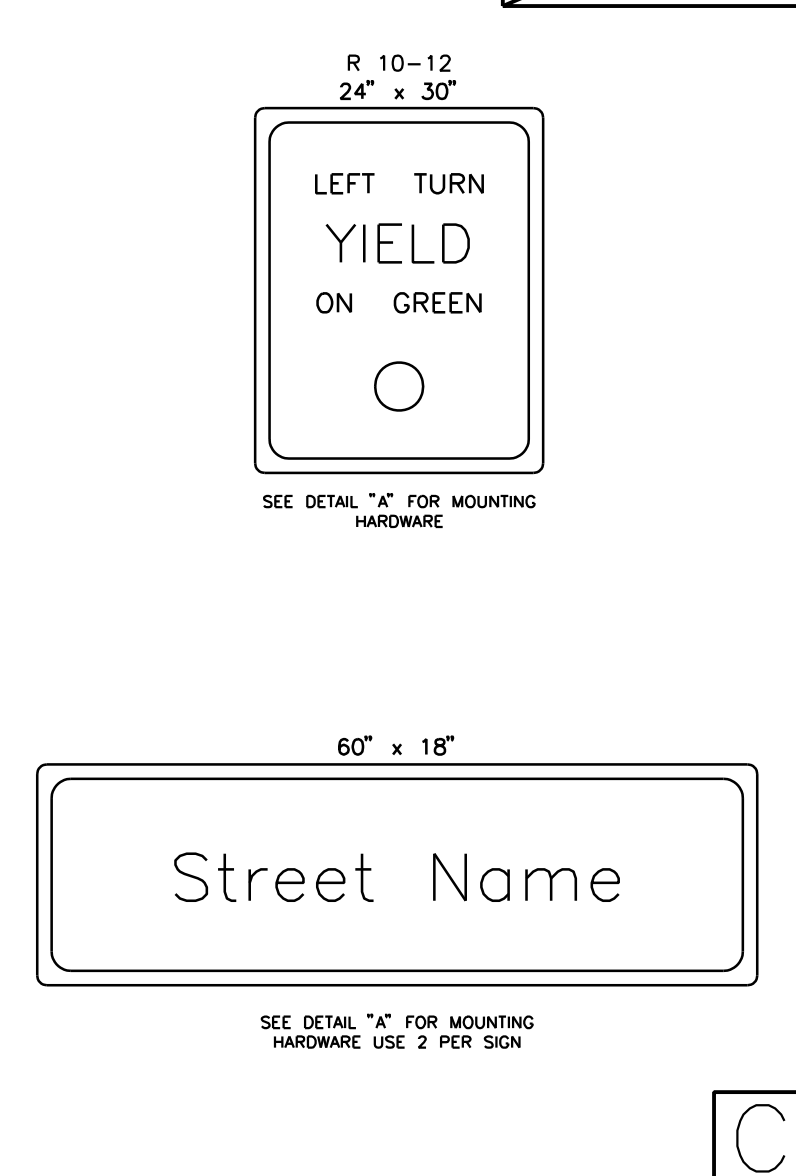
BANDED SIGN MOUNTING BRACKET DETAIL



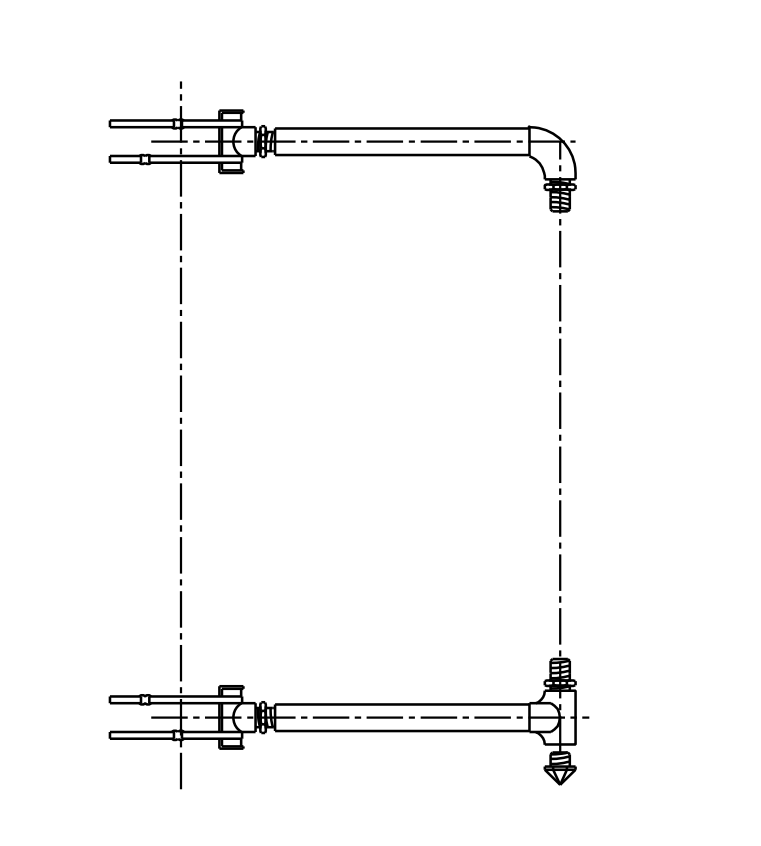
TYPE I SIGNAL MOUNTING BRACKET ASSEMBLY DETAIL



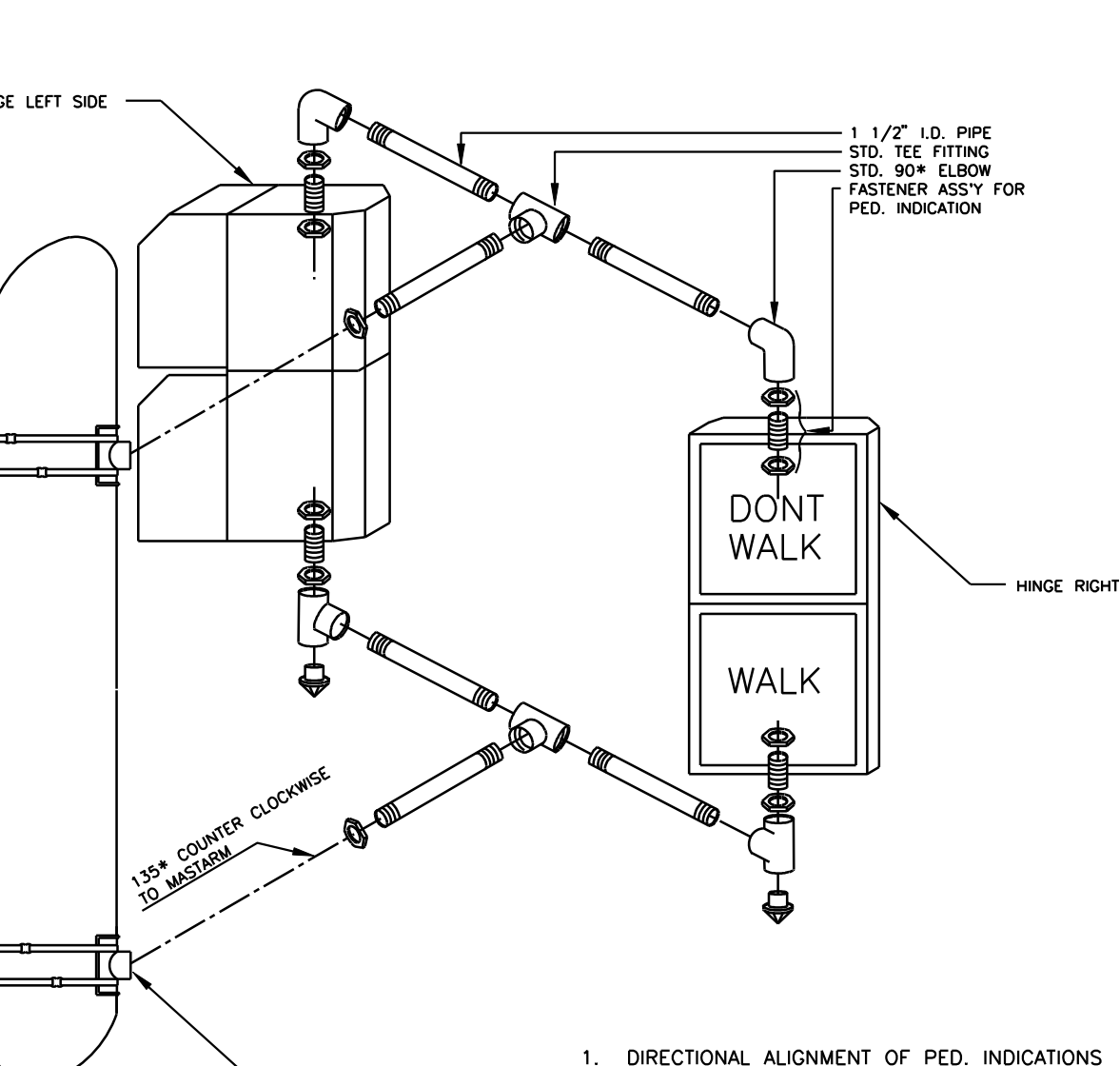
STANDARD SIGNING



TYPE III SIDE-OF-POLE MOUNTING BRACKET ASSEMBLY

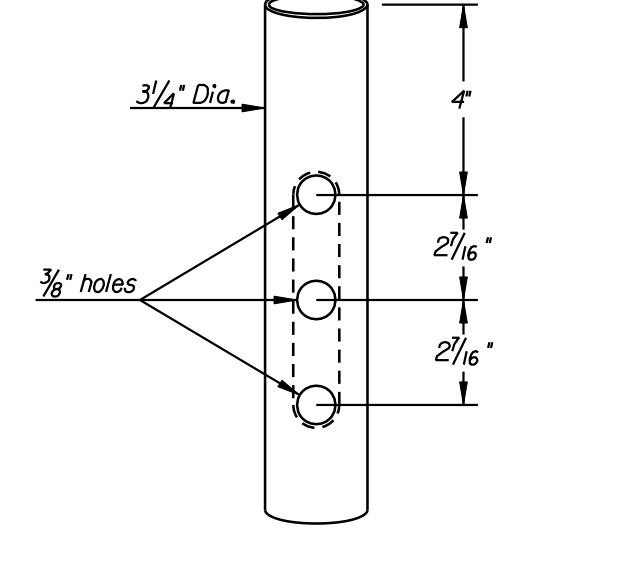


TYPE II SIGNAL MOUNTING BRACKET ASSEMBLY (SIDE-OF-POLE)

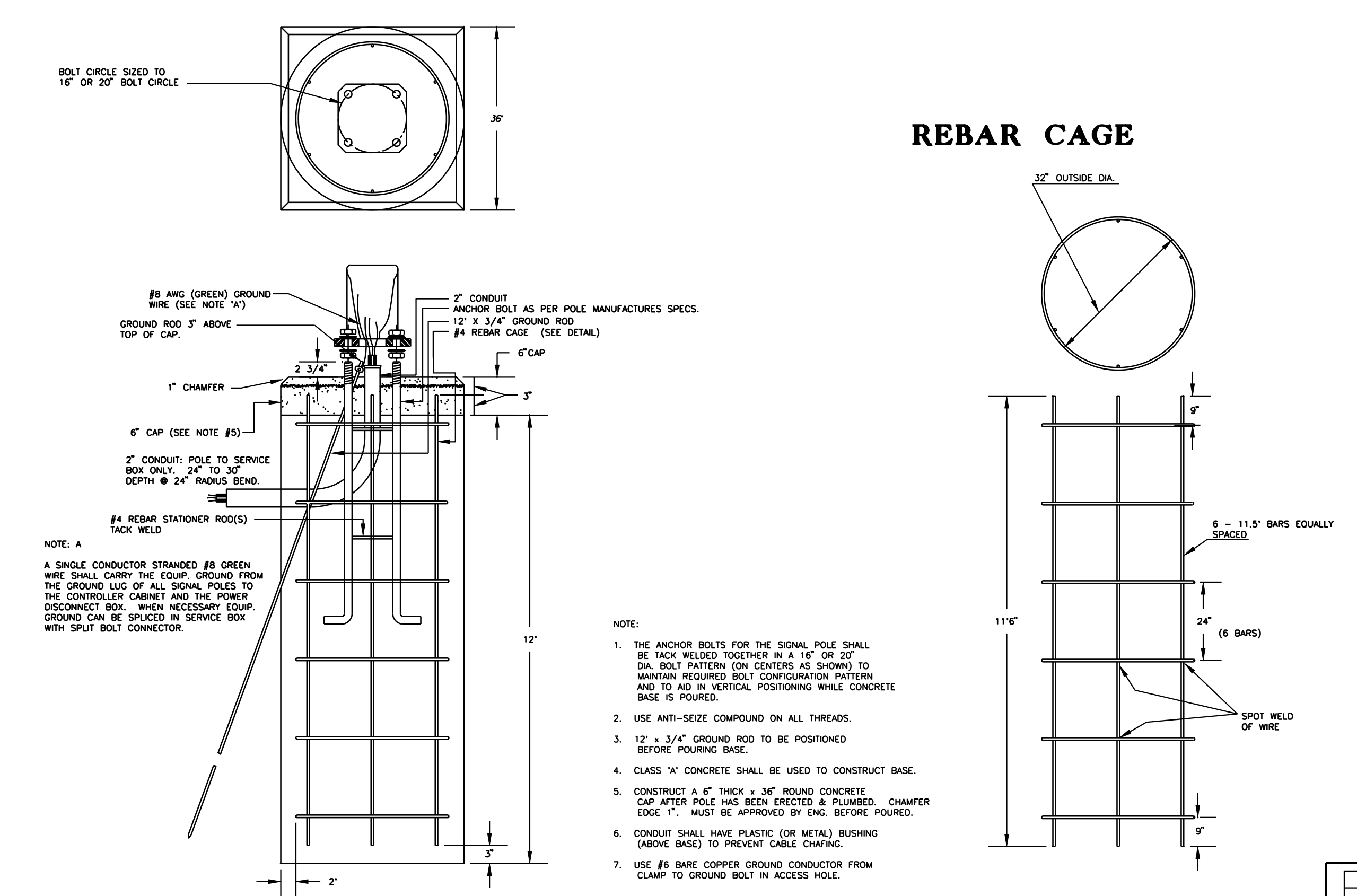


1. DIRECTIONAL ALIGNMENT OF PED. INDICATIONS & BRACKET(S) SHALL BE DETERMINED IN THE FIELD BY THE ENGINEER.
2. THROUGH HOLES IN THE POLE SHALL BE DRILLED AND WELL REAMED TO PREVENT CABLE CHAFING.
3. HINGE PEDESTRIAN SIGNAL DOORS AWAY FROM POLE.

POLE DRILLING FOR CREDENZA LUMINAIRE
(J.U. Poles to be drilled for credenza fixtures)



REBAR CAGE



TOPEKA STREET		
STEEL SIGNAL POLE ASSEMBLY DETAILS		
PROJECT NUMBER 472-84745		
DRAWN BY: T.M.	SCALE	REVISED BY:
DATE: MAY 97	NO SCALE	DATE:
CITY OF WICHITA DEPARTMENT OF PUBLIC WORKS		
DIVISION OF TRAFFIC ENGINEERING		SHEET R35 OF R52
WM. G. MCKINLEY P.E. TRAFFIC ENGINEER		