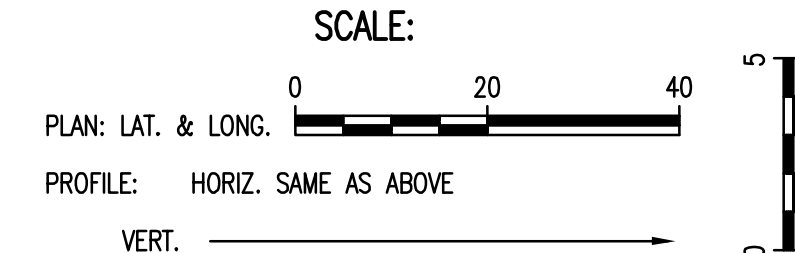
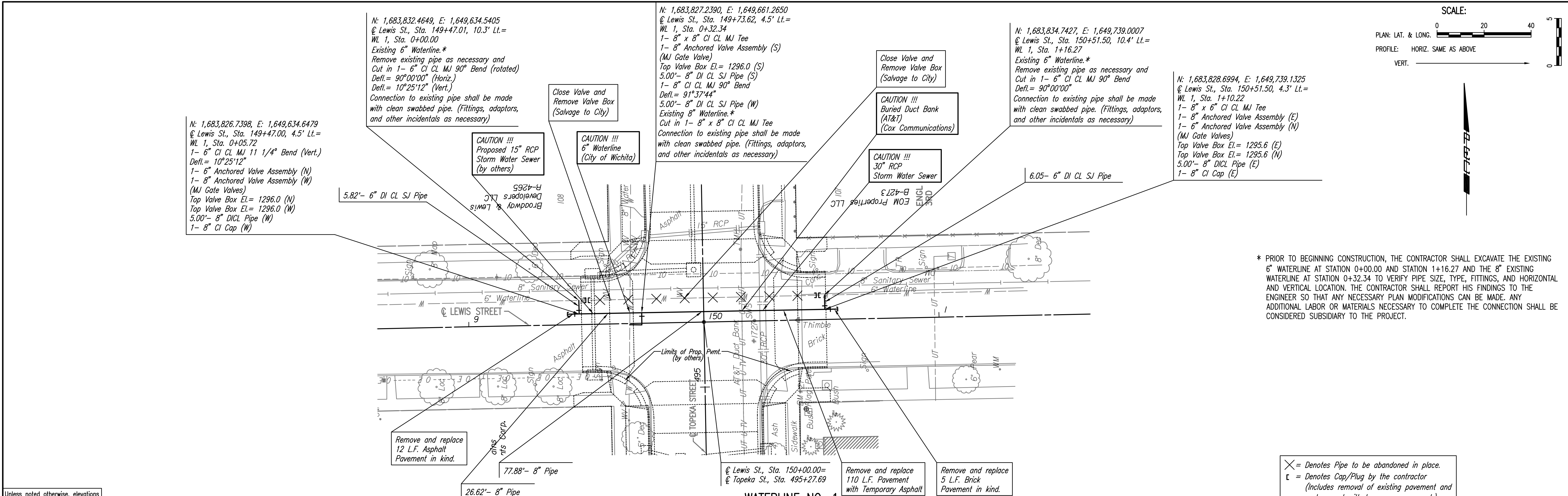


PLAN	CHECKED	CHECKED
BY		
DATE		

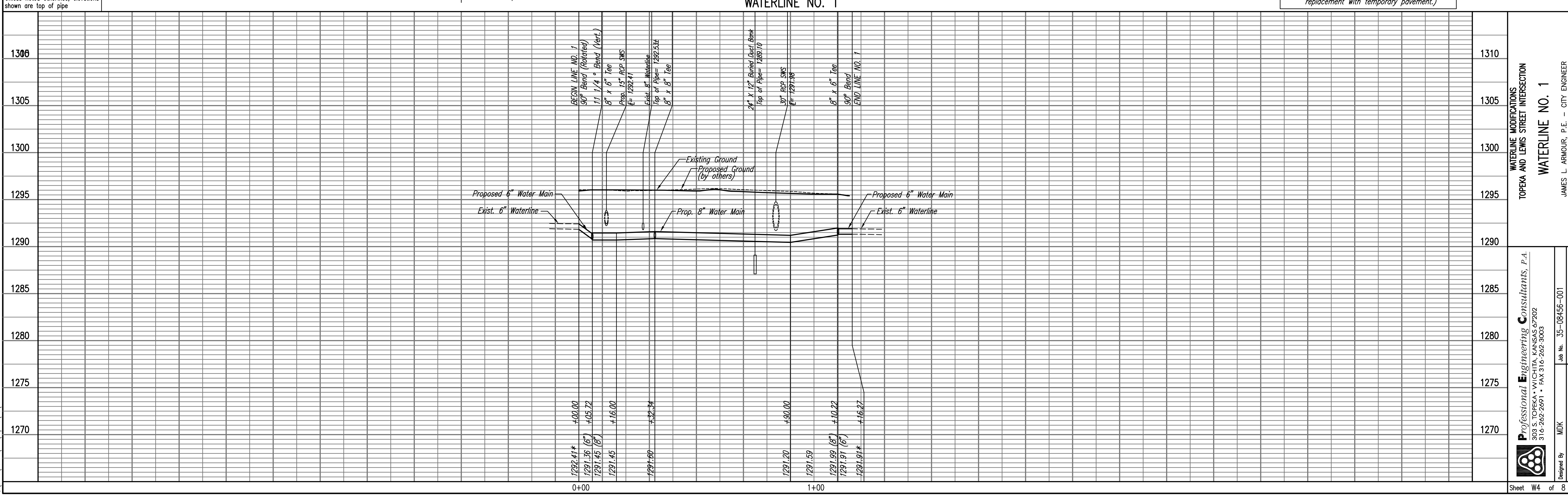
PROFILE	CHECKED	CHECKED
BY		
DATE		

Printed: 02-26-2009 10:39:22 AM by CSI
 Plot Scale: 1:20 02-26-2009 11:02:51 AM
 G:\2008\08455\001\Topeka\WL 08455-001-C-WPP01



* PRIOR TO BEGINNING CONSTRUCTION, THE CONTRACTOR SHALL EXCAVATE THE EXISTING 6" WATERLINE AT STATION 0+00.00 AND STATION 1+16.27 AND THE 8" EXISTING WATERLINE AT STATION 0+32.34 TO VERIFY PIPE SIZE, TYPE, FITTINGS, AND HORIZONTAL AND VERTICAL LOCATION. THE CONTRACTOR SHALL REPORT HIS FINDINGS TO THE ENGINEER SO THAT ANY NECESSARY PLAN MODIFICATIONS CAN BE MADE. ANY ADDITIONAL LABOR OR MATERIALS NECESSARY TO COMPLETE THE CONNECTION SHALL BE CONSIDERED SUBSIDIARY TO THE PROJECT.

⊗ = Denotes Pipe to be abandoned in place.
 □ = Denotes Cap/Plug by the contractor
 (Includes removal of existing pavement and replacement with temporary pavement.)



Professional Engineering Consultants, P.A.
 603 E. TOPEKA AVENUE, KANSAS CITY, MO 64108
 316-262-2691 • FAX 316-262-3003

Job No. 35-08455-001 Date November 2008

Designed By MDK Drawn By CSI, RWJ

WATERLINE MODIFICATIONS
 TOPEKA AND LEWIS STREET INTERSECTION
WATERLINE NO. 1

JAMES L. ARMOUR, P.E. - CITY ENGINEER
 CITY OF WICHITA PROJECT NO. 448-90424

Sheet W4 of 8