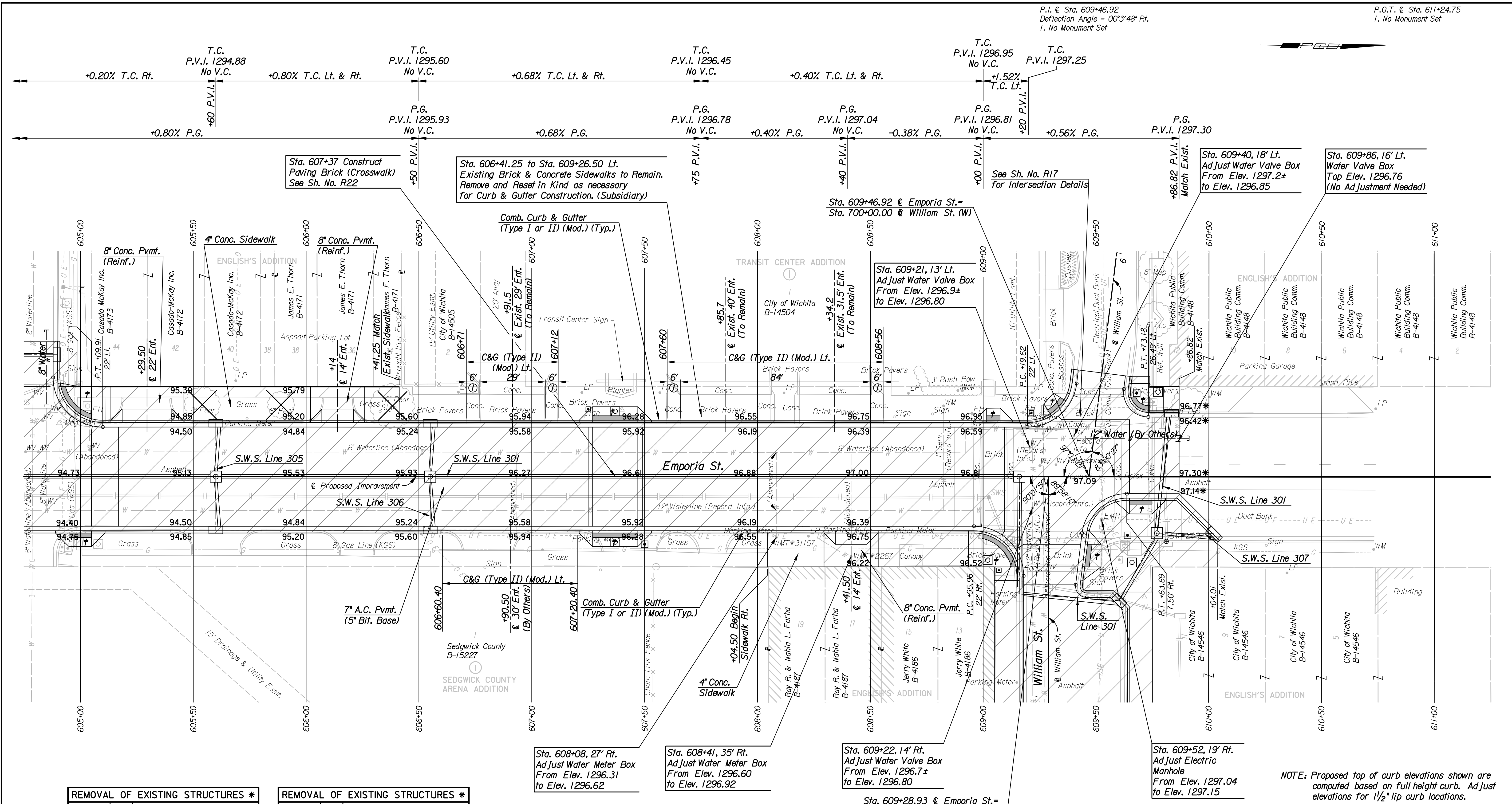


P.I. @ Sta. 609+46.92
Deflection Angle = 00°3'48" Rt.
I. No Monument Set

P.O.T. @ Sta. 611+24.75
I. No Monument Set



REMOVAL OF EXISTING STRUCTURES *	
STATION	ITEM
605+74 Lt.	Parking Meter Post
606+33 Lt.	Sign
607+23 Lt.	Sign
608+61 Lt.	Sign
609+02 Rt.	SWS Manhole, 12" RCP (ENE)
609+12 Rt.	Traffic Signal Pedestal
609+15 Rt.	Traffic Signal Manhole
609+16 Rt.	Curb Inlet, 12" RCP (N)
609+21 Lt.	Traffic Signal Pedestal
609+26 Lt.	Object Marker

* For Information Only

REMOVAL OF EXISTING STRUCTURES *	
STATION	ITEM
609+28 Lt.	Traffic Signal Manhole
609+47 Rt.	Object Marker
609+60 Rt.	Traffic Signal Pole
609+61 Rt.	Curb Inlet, 12" RCP (NW)
609+63 Rt.	Traffic Signal Manhole
609+73 Lt.	Traffic Signal Manhole
609+76 Lt.	Traffic Signal Pedestal
609+79 Lt.	Curb Inlet
609+81 Rt.	Curb Inlet, 12" RCP (W)

* For Information Only

- Utilities**
- Gas: Kansas Gas Service
 - Power: Westar Energy
 - Telephone: Cox Communications
 - Television: Cox Communications
 - Water: Wichita Water and Sanitary Sewer

LEGEND

- Pavement Removal
- Detectable Warning Strip
- Wheelchair Ramp
- Match Existing

① Transition curb & gutter from 6" height to 1 1/2" height.

BM#280 Chis. 100' center of curb inlet at NE corner of Emporia St. & William St.
28.68' Rt. @ Sta. 609+81.16 Elev.=1297.15

NOTE: Proposed top of curb elevations shown are computed based on full height curb. Ad just elevations for 1/2" lip curb locations.

Plotted By: svb Date: 3/8/2009 2:11:52 PM
FILE: I:\2008\08456\Plan\08456-PL605 Emporia.dgn

No.	Revision	By	Date
<p>EMPORIA STREET</p> <p>PLAN</p> <p>STA. 605+00 TO STA. 611+00</p> <p>JAMES L. ARMOUR, P.E. - CITY ENGINEER CITY OF WICHITA PROJECT NO. 472-84744</p> <p>Professional Engineering Consultants, P.A. 303 S. TOPKA • WICHITA, KANSAS 67202 316-262-2691 • FAX 316-262-3003</p>			
Designed by	JPS	Job No.	08456
Drawn by	SVB	Date	Feb., 2009
			Sht. R5 of R78