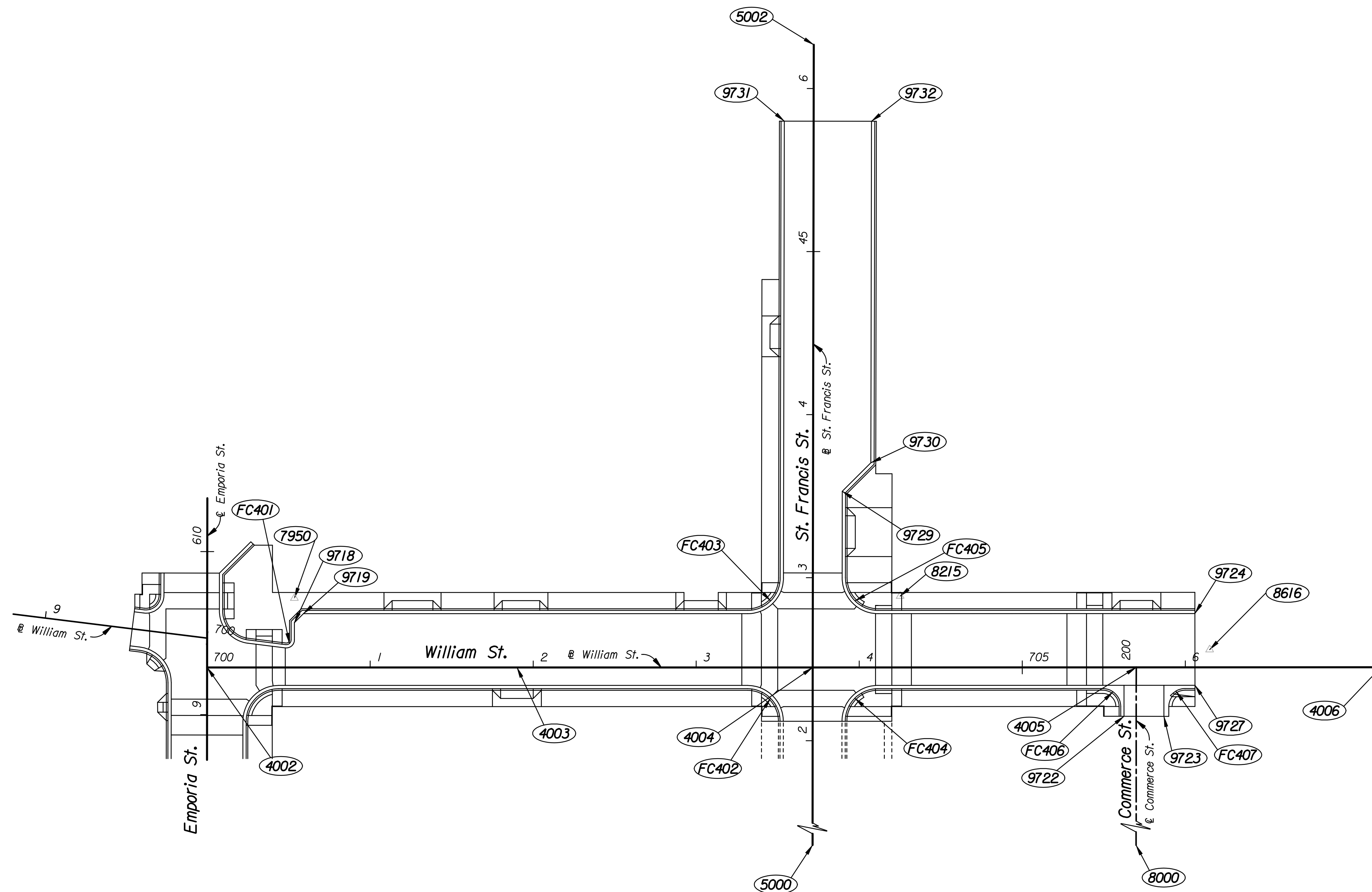


COORDINATE TABLE					
POINT NO.	NORTH COORDINATE	EAST COORDINATE	STATION	OFFSET	DESCRIPTION
4002	1,685,231.7638	1,650,041.9094	700+00.00	0.00' Rt.	William Baseline Point
4003	1,685,235.4044	1,650,231.9409	701+90.07	0.00' Rt.	William Baseline Point
4004	1,685,238.8782	1,650,413.2682	703+71.43	0.00' Rt.	William & St. Francis @ Point
4005	1,685,242.7604	1,650,611.7114	705+69.91	0.00' Rt.	William @ & Commerce @ Point
4006	1,685,245.6949	1,650,761.7056	707+19.93	0.00' Rt.	William Baseline Point
5000	1,684,994.0147	1,650,417.8943	40+00.00	0.00' Rt.	St. Francis Baseline Point
5002	1,685,620.8287	1,650,406.6248	46+26.92	0.00' Rt.	St. Francis Baseline Point
8000	1,684,994.0147	1,650,616.2884	197+51.21	0.00' Rt.	Commerce Centerline Point
9718	1,685,260.2849	1,650,094.9430	700+53.57	27.50' Lt.	Edge of Pavement/Edge of Curb
9719	1,685,265.8892	1,650,100.3367	700+59.07	33.00' Lt.	Edge of Pavement/Edge of Curb
9722	1,685,212.6037	1,650,604.7650	199+69.98	7.50' Lt.	Edge of Pavement/Edge of Curb
9723	1,685,213.1096	1,650,632.2604	199+69.98	20.00' Rt.	Edge of Pavement
9724	1,685,276.4583	1,650,647.0590	706+05.91	33.00' Lt.	Edge of Pavement/Edge of Curb
9727	1,685,232.4667	1,650,647.9197	706+05.91	11.00' Rt.	Edge of Pavement/Edge of Curb
9729	1,685,347.2677	1,650,429.3857	43+53.00	18.00' Rt.	Edge of Pavement/Edge of Curb
9730	1,685,365.0694	1,650,446.5787	43+70.50	35.50' Rt.	Edge of Pavement/Edge of Curb
9731	1,685,573.6073	1,650,389.4434	45+80.00	18.00' Lt.	Edge of Pavement/Edge of Curb
9732	1,685,574.5377	1,650,442.9354	45+80.00	35.50' Rt.	Edge of Pavement/Edge of Curb

NO.	Δ	R	T	L	E	P.C. COORDINATES		P.I. COORDINATES		P.T. COORDINATES		C.C. COORDINATES	
						NORTH	EAST	NORTH	EAST	NORTH	EAST	NORTH	EAST
						FC401	97°05'12" Lt.	3'	3.40'	5.08'	1.53'	1,685,246.6989	1,650,089.8322
FC402	90°00'55" Rt.	20'	20.01'	31.42'	8.29'	1,685,225.1142	1,650,373.5158	1,685,225.4974	1,650,393.5174	1,685,205.4957	1,650,393.8953	1,685,205.1179	1,650,373.8989
FC403	89°53'56" Lt.	20'	19.96'	31.38'	8.26'	1,685,273.1075	1,650,372.7021	1,685,273.4899	1,650,392.6632	1,685,293.4516	1,650,392.3160	1,685,293.1038	1,650,372.3190
FC404	89°57'42" Rt.	20'	19.99'	31.40'	8.27'	1,685,206.2886	1,650,433.8875	1,685,226.2717	1,650,433.5099	1,685,226.6626	1,650,453.4927	1,685,206.6664	1,650,453.8839
FC405	90°07'28" Lt.	20'	20.04'	31.46'	8.32'	1,685,294.3046	1,650,432.3072	1,685,274.2641	1,650,432.6557	1,685,274.6562	1,650,452.6954	1,685,294.6524	1,650,452.3042
FC406	90°04'00" Rt.	11'	11.01'	17.29'	4.57'	1,685,229.3614	1,650,591.4417	1,685,229.5768	1,650,602.4524	1,685,218.5659	1,650,602.6550	1,685,218.3635	1,650,591.6568
FC407	89°56'00" Rt.	11'	10.99'	17.27'	4.55'	1,685,219.1489	1,650,631.1491	1,685,230.1343	1,650,630.9469	1,685,230.3492	1,650,641.9320	1,685,219.3513	1,650,642.1472

CONTROL POINTS						
POINT NO.	NORTH COORDINATE	EAST COORDINATE	LOCATION	STATION	OFFSET	DESCRIPTION
2200	1,685,688.9576	1,650,425.1254	St. Francis St.	46+95±	20'± Rt.	Mag. Nail & Shiner
7950	1,685,275.3200	1,650,094.6400	William St.	700+53.56	42.54' Lt.	Chiseled "+"
8215	1,685,283.7000	1,650,466.1100	William St.	704+25.14	43.78' Lt.	Chiseled "+"
8616	1,685,254.5000	1,650,656.5400	William St.	706+14.96	10.86' Lt.	Chiseled "+"



Plotted By: svb Date: 2/28/2009 12:30:10 PM
 FILE: I:\2008\08455\Geometry\08455-COGO William.dgn

No.	Revision	By	Date
WILLIAM STREET AND ST. FRANCIS STREET			
COORDINATE GEOMETRY			
JAMES L. ARMOUR, P.E. - CITY ENGINEER CITY OF WICHITA PROJECT NO. 472-84744			
Professional Engineering Consultants, P.A. 303 S. TOPEKA • WICHITA, KANSAS 67202 316-262-2691 • FAX 316-262-3003			
Designed by	JPS	Job No.	08455
Drawn by	DRP	Date	Feb., 2009
			Sht. R9 of R78