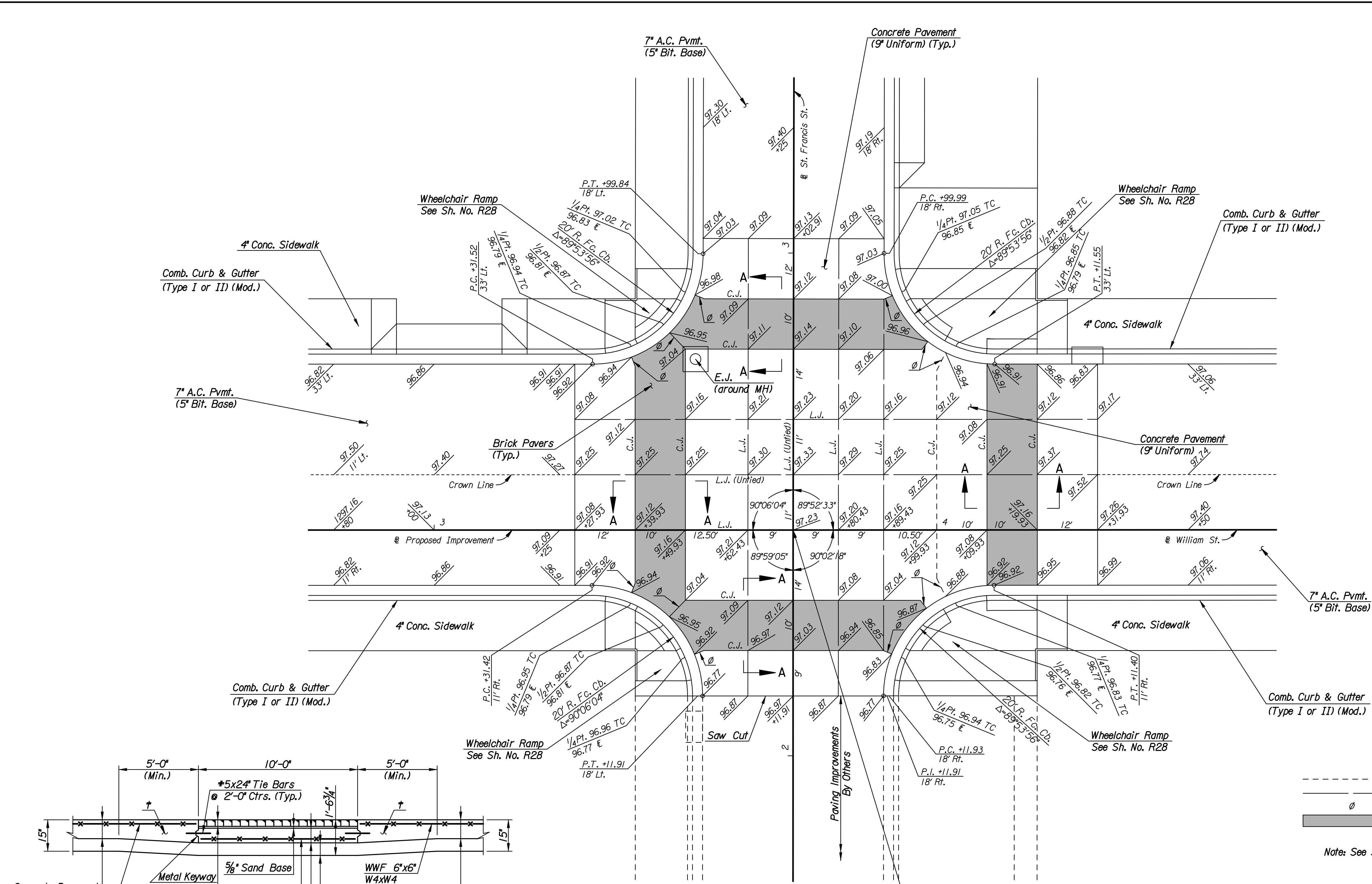
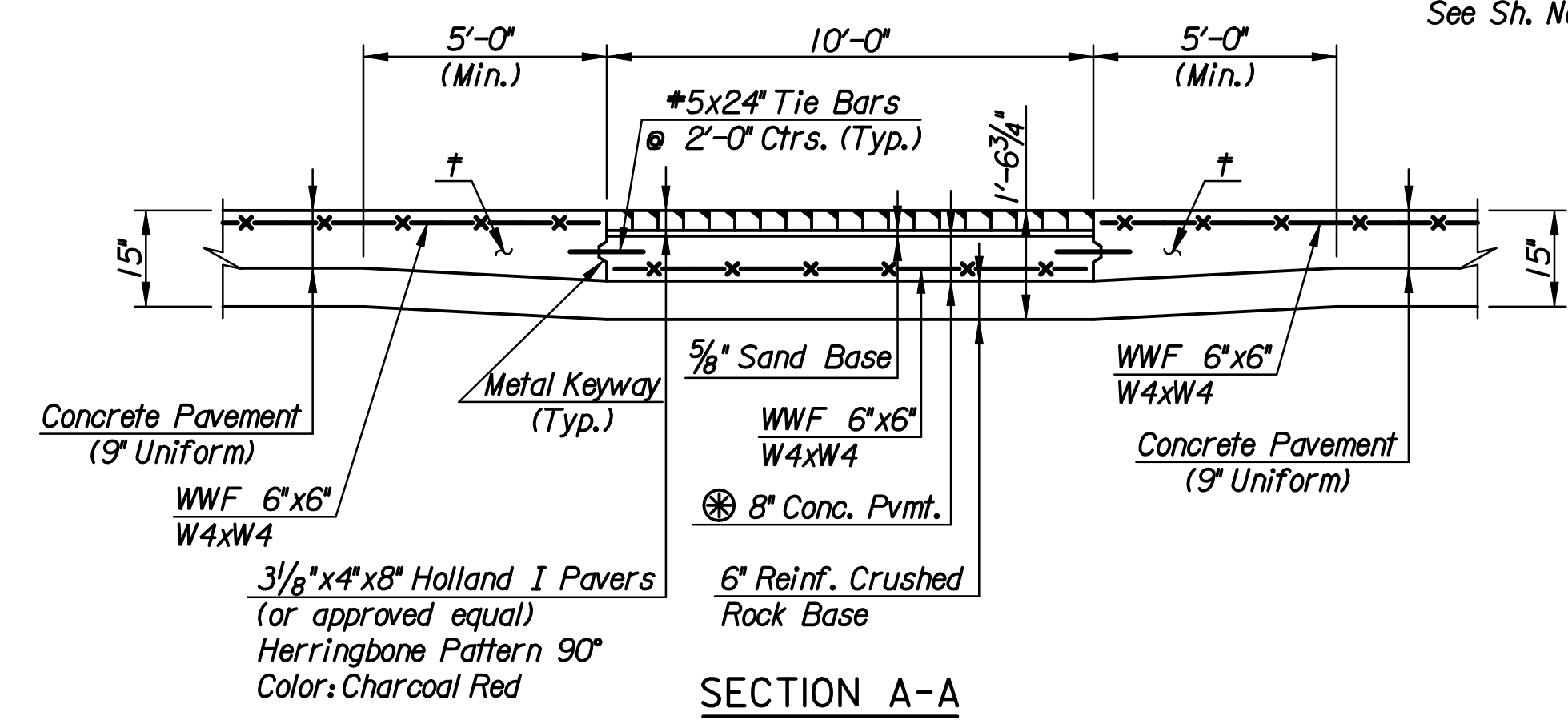


Plotted By: svb Date: 3/9/2009 9:34:06 AM
 FILE: I:\2008\08455\Intersection\08455-Int-StFrancis.dgn



Scale: 1"=10'



SECTION A-A

⊗ #8 Concrete Pavement to be paid as "Concrete Pavement (9' Uniform)"
 † Additional Pavement Thickness shall be Subsidiary to "Concrete Pavement (9' Uniform)"

LEGEND

- Construction Joint (C.J.)
- - - Longitudinal Joint (L.J.)
- ∅ Omit Dowels
- ▨ Holland I Pavers

Note: See Sh. No. R20 for Joint Details.

No.		Revision		By		Date	
WILLIAM STREET							
INTERSECTION DETAIL							
WILLIAM AND ST. FRANCIS							
JAMES L. ARMOUR, P.E.—CITY ENGINEER CITY OF WICHITA PROJECT NO. 472-84744							
Professional Engineering Consultants, P.A.							
303 S. TOPEKA • WICHITA, KANSAS 67202 316-262-2691 • FAX 316-262-3003							
Designed by	JPS	Job No.	08455				
Drawn by	AKL	Date	Feb., 2009			Sht. R18 of R78	