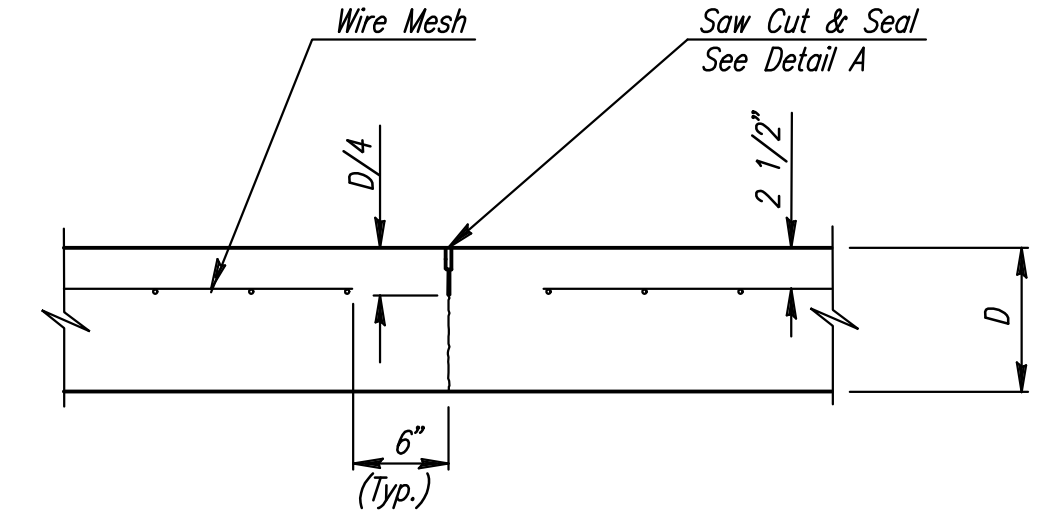
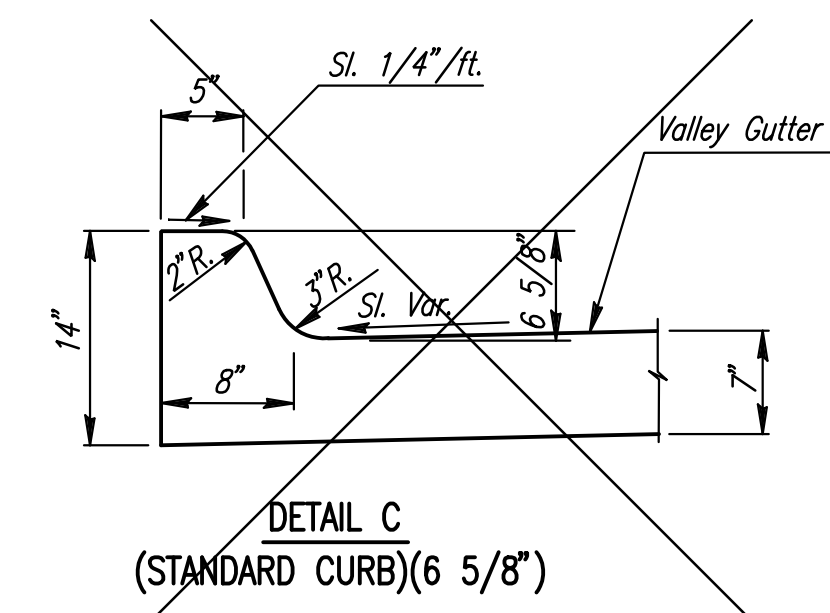
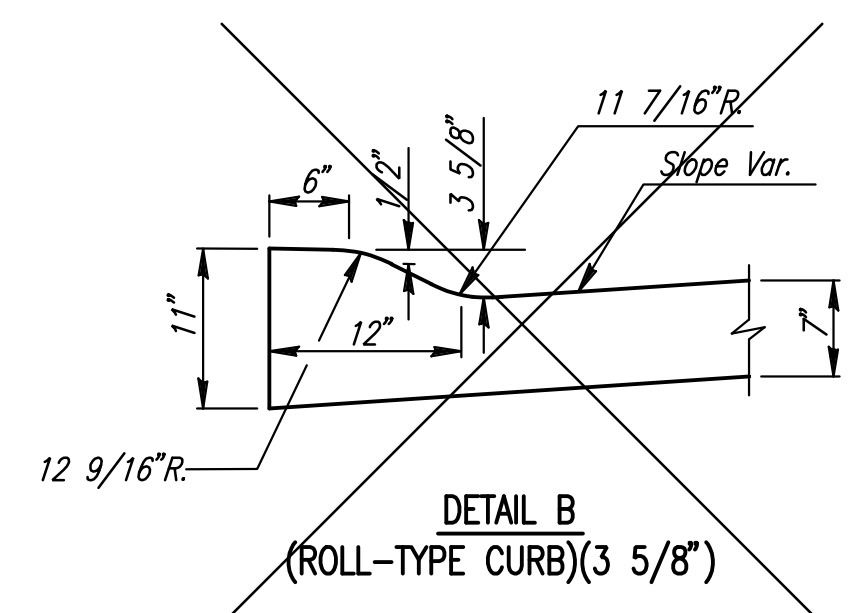
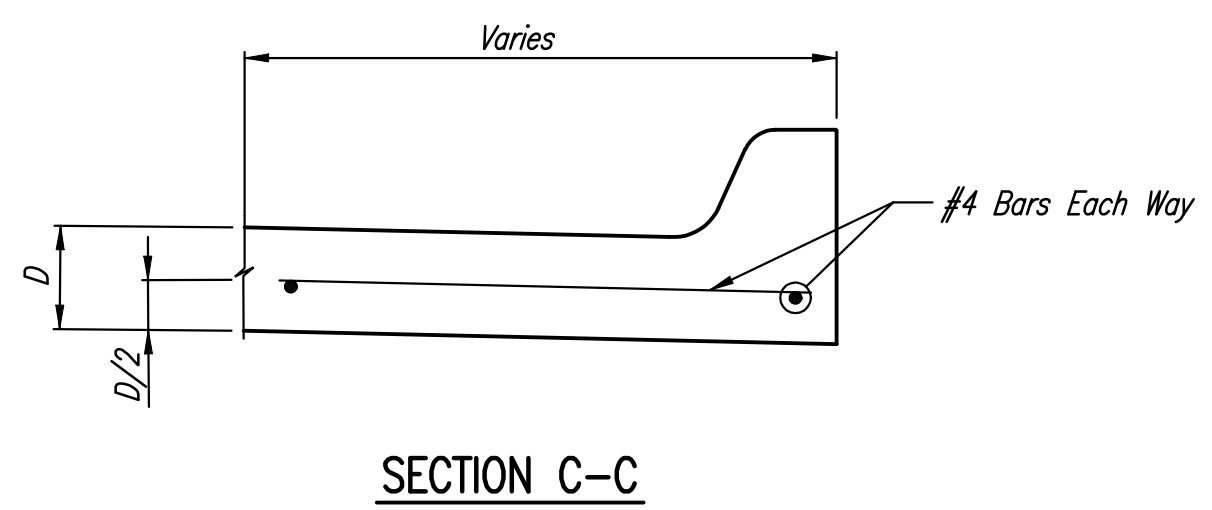


NOTE: OMIT REINFORCING MESH AT ALL JOINTS  
NOTE: ALL CONCRETE VALLEY GUTTER REINFORCEMENT SHALL BE ADEQUATELY SUPPORTED BY BAR CHAIRS IN THE REQUIRED POSITION UNLESS APPROVED OTHERWISE BY THE ENGINEER.



- ① To be accomplished in 2 cuts for Longitudinal Joints and Contraction Joints. Initial cut to be 1/8" wide.
- ② Eliminate bottom of cut when metal keyway is used as part of Longitudinal or Transverse Construction Joint and at Doweled Construction Joint Locations.
- ③ 1 1/2" Minimum



**MONOLITHIC EDGE CURB**  
(See Typical Sections for Curb Dimensions)

DSNR: I:/2008/08456/STANDARDS/08456-VALGUTDL.DGN 1-23-2009 LAST REV: BY: OPER: SVB SCALE: I:/2008/08456/STANDARDS/08456-VALGUTDL.DGN 1-23-2009 LAST REV: BY:

No.	Revision	By	Date
<b>EMPIRIA STREET, WILLIAM STREET, AND ST. FRANCIS STREET</b> <b>VALLEY GUTTER DETAILS</b> JAMES L. ARMOUR, P.E.—CITY ENGINEER CITY OF WICHITA PROJECT NO. 472-84744 <b>Professional Engineering Consultants, P.A.</b> 303 S. TOPEKA • WICHITA, KANSAS 67202 316-262-2691 • FAX 316-262-3003			
Designed by	JPS	Job No.	08456
Drawn by	SVB	Date	February, 2009
			Sht. R25 of R78