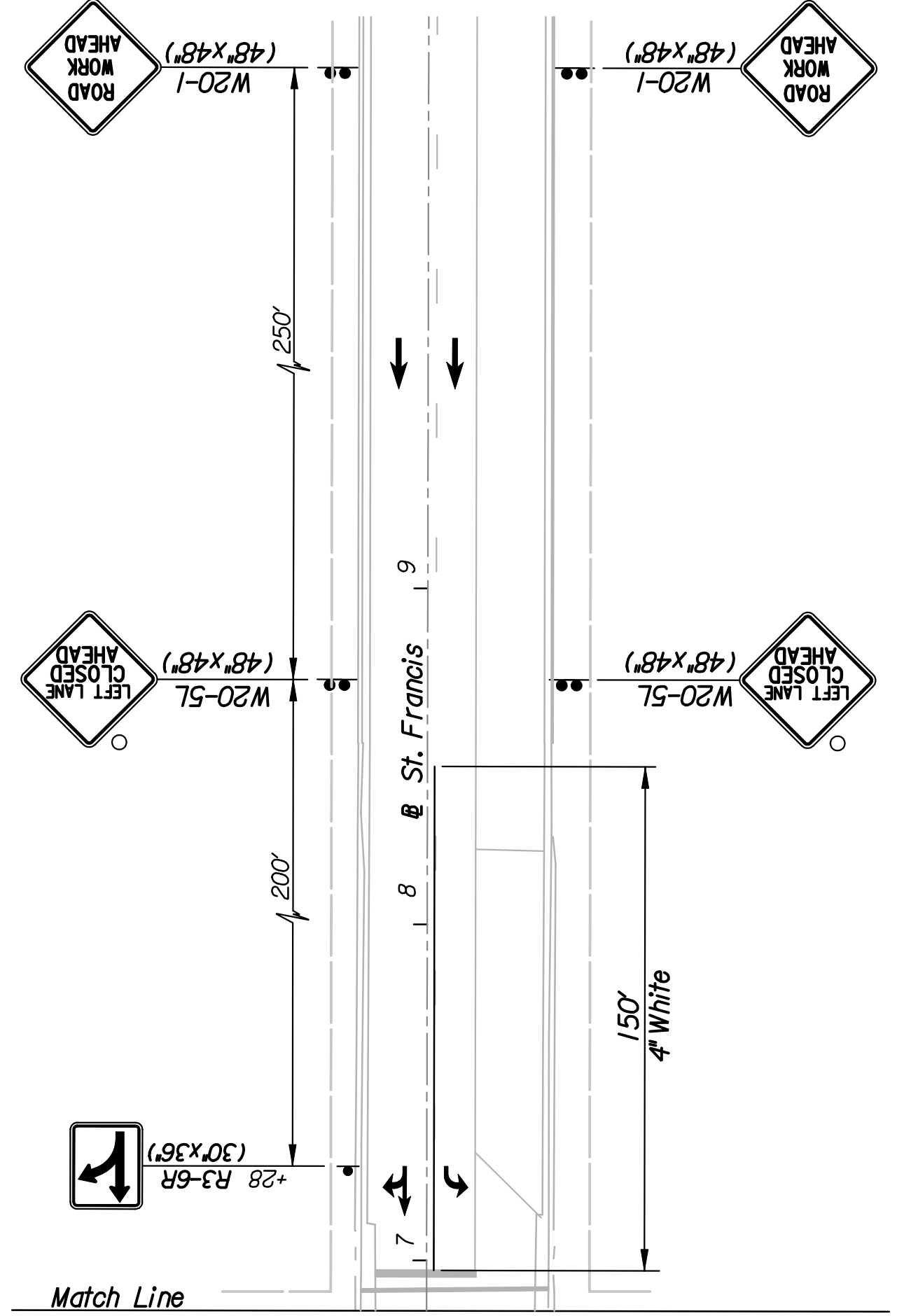
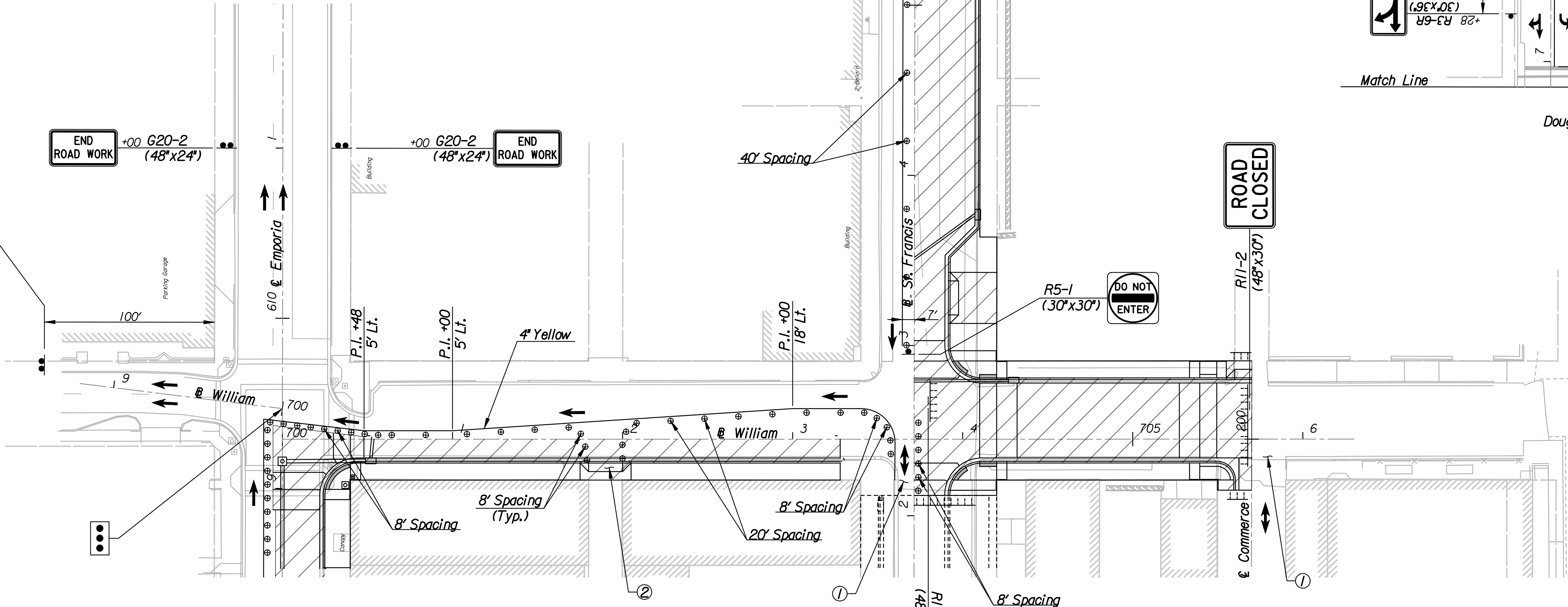


Note: Utilities are not shown on Traffic Control Plans. The Contractor is responsible for verification as to type and location of underground utilities as may be necessary to avoid damage thereto. The Contractor is responsible for repairing any damage to underground utilities.

G20-2
(48"x24")
END ROAD WORK

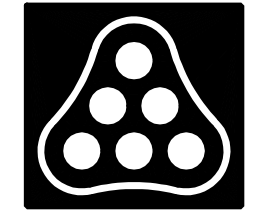
+00 G20-2
(48"x24")
END ROAD WORK

+00 G20-2
(48"x24")
END ROAD WORK



- LEGEND**
- ⊕ Channelizing Device
 - TTTTTT Type III Barricade
 - ⦿ Maintain Signalized Intersection
 - ▨ Work Area (New Pavement)
 - ➔ Direction of Traffic
 - ▼ Mount on Traffic Signal Mast Arm

- ① Provide temporary all weather access to St. Francis and Commerce South of William at all times during construction.
- ② Provide temporary all weather access to alley at all times during construction.



No.	Revision	By	Date
WILLIAM & ST. FRANCIS STREETS			
TRAFFIC CONTROL PLAN			
STAGE I			
JAMES L. ARMOUR, P.E.—CITY ENGINEER CITY OF WICHITA PROJECT NO. 472-84744			
Professional Engineering Consultants, P.A. 303 S. TOPEKA • WICHITA, KANSAS 67202 316-262-2691 • FAX 316-262-3003			
Designed by	WDH	Job No.	08455
Drawn by	SVB	Date	Feb., 2009
			Sht. R56 of R78