

**PLAN NOTES:**

1. FIELD VERIFY EXISTING CONDITIONS AND DIMENSIONS.
2. COORDINATE CONDUIT ROUTING WITH EXISTING UTILITIES AND CONDITIONS.
3. COORDINATE ALL REQUIREMENTS WITH WESTAR.

**KEYED NOTES:**

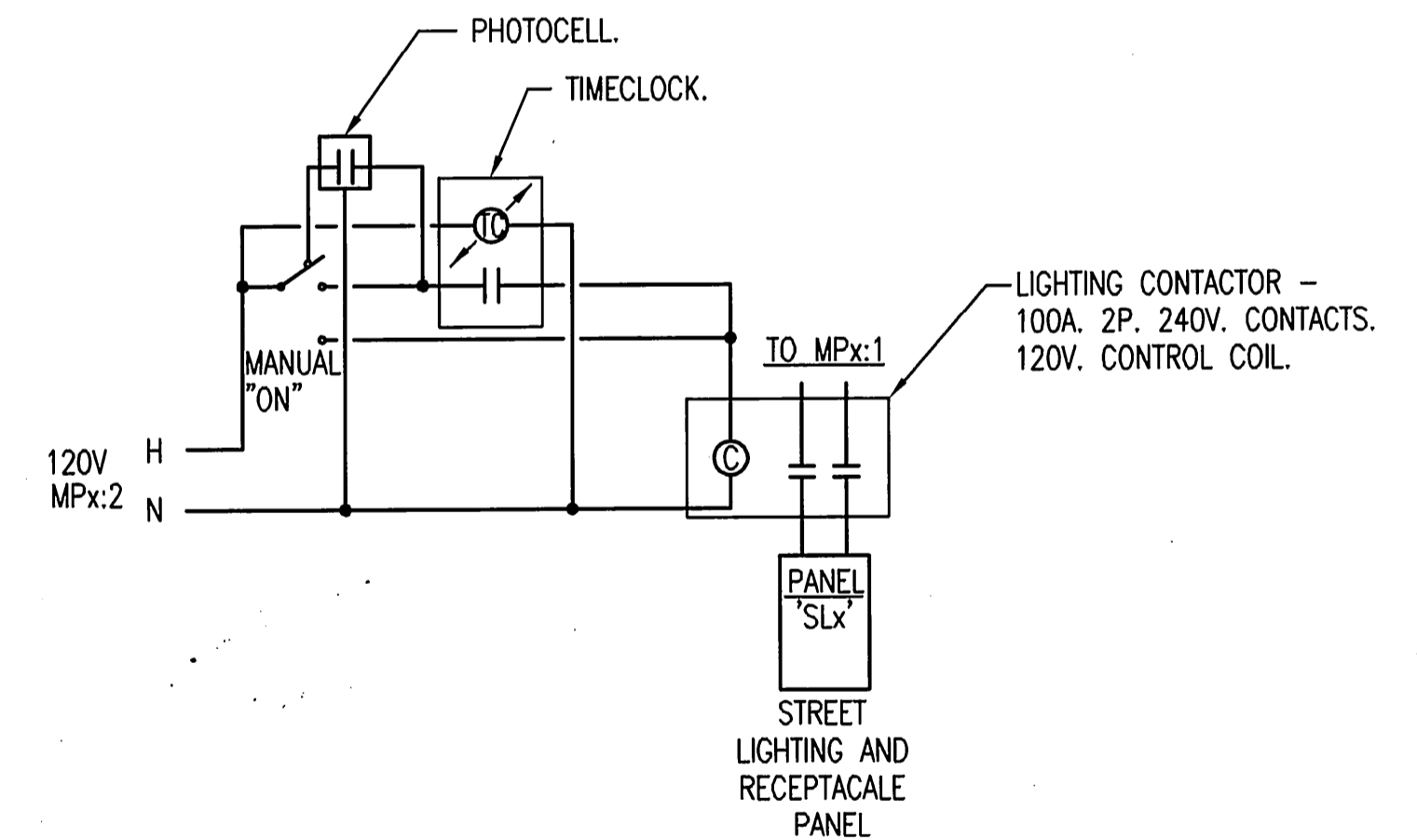
- ① STREET LIGHTING POLE. LETTER DESIGNATES POLE/FIXTURE TYPE. SEE POLE DETAIL SHEET AND LIGHTING FIXTURE SCHEDULE FOR ADDITIONAL INFORMATION.
- ② (1)2" RGS CONDUIT FOR STREET LIGHTING CIRCUITING AND POLE MOUNTED RECEPTACLE CIRCUITING.
- ③ (1)2" RGS CONDUIT WITH PULL ROPE FOR STREET LIGHTING CIRCUITING. ARENA CONTRACTOR TO EXTEND CONDUIT AND PROVIDE AND INSTALL CONDUCTORS FROM MP2 TO STREET LIGHTS PROVIDED UNDER THE ARENA PROJECT. THIS CONTRACTOR TO TERMINATE CONDUCTORS. COORDINATE WORK WITH ARENA CONTRACTOR.

**PANELBOARD: MP2** 208/120 VOLTS, 1 PHASE, 3 WIRE  
100 AMP MAIN BKR, SURFACE MTD.  
22000 AIC LABELED

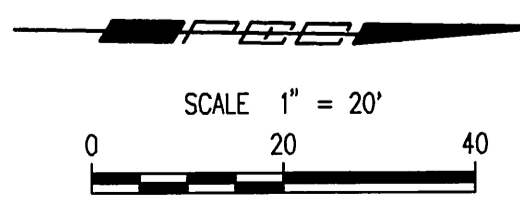
CIRC NO.	LOAD V. A.	LOAD TYPE	LOAD DESCRIPTION	P.	AMP SIZE	PHASE	AMP SIZE	LOAD DESCRIPTION	LOAD TYPE	LOAD V. A.	CIRC NO.
1			PANELBOARD: SL2	2	60	A	20	TIMECLOCK, PHOTOCELL	RM	400	2
3						B	20	SPARE			4
5			SPACE			A	20	SPARE			6
7			SPACE			B	20	SPARE			8
9			SPACE			A		SPACE			10
11			SPACE			B		SPACE			12

**PANELBOARD: SL2** 208/120 VOLTS, 1 PHASE, 3 WIRE  
100 AMP MLO, SURFACE MTD.  
22000 AIC LABELED

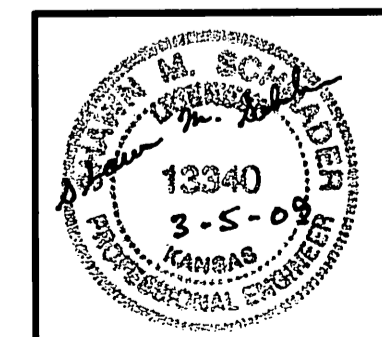
CIRC NO.	LOAD V. A.	LOAD TYPE	LOAD DESCRIPTION	P.	AMP SIZE	PHASE	AMP SIZE	LOAD DESCRIPTION	LOAD TYPE	LOAD V. A.	CIRC NO.
1	1350	LBT	SOUTH ST. FRANCIS LIGHTS	2	15	A	20	REC - NORTH CTR 2 POLES	RPT	800	2
3			(ARENA)			B	20	REC - NE & NW POLES	RPT	800	4
5	900	LBT	NORTH WILLIAM LIGHTS	2	15	A	20	REC - SOUTHWEST 2 POLES	RPT	800	6
7						B	20	REC - SOUTHWEST 2 POLES	RPT	800	8
9	900	LBT	SOUTH WILLIAM LIGHTS	2	15	A	20	SPARE			10
11						B	20	SPARE			12



① CONTROL WIRING DIAGRAMS  
NO SCALE



Scaled 03-05-2009 3:55:08 PM by SMS  
 E:\Projects\03-05-2009\03-05-2009-St. Francis  
 E:\Projects\03-05-2009\03-05-2009-St. Francis



No.	Revision	By	Date
ST. FRANCIS STREET			
<b>LIGHTING PLAN</b>			
JAMES L. ARMOUR, P.E.-CITY ENGINEER CITY OF WICHITA PROJECT NO. 472-84744			
<b>Professional Engineering Consultants, P.A.</b> 303 S. TOPEKA • WICHITA, KANSAS 67202 316-262-2691 • FAX 316-262-3003			
Designed by	SMS	Job No.	08456
Drawn by	TAL	Date	Feb., 2009
			Sht. E4 of 5