

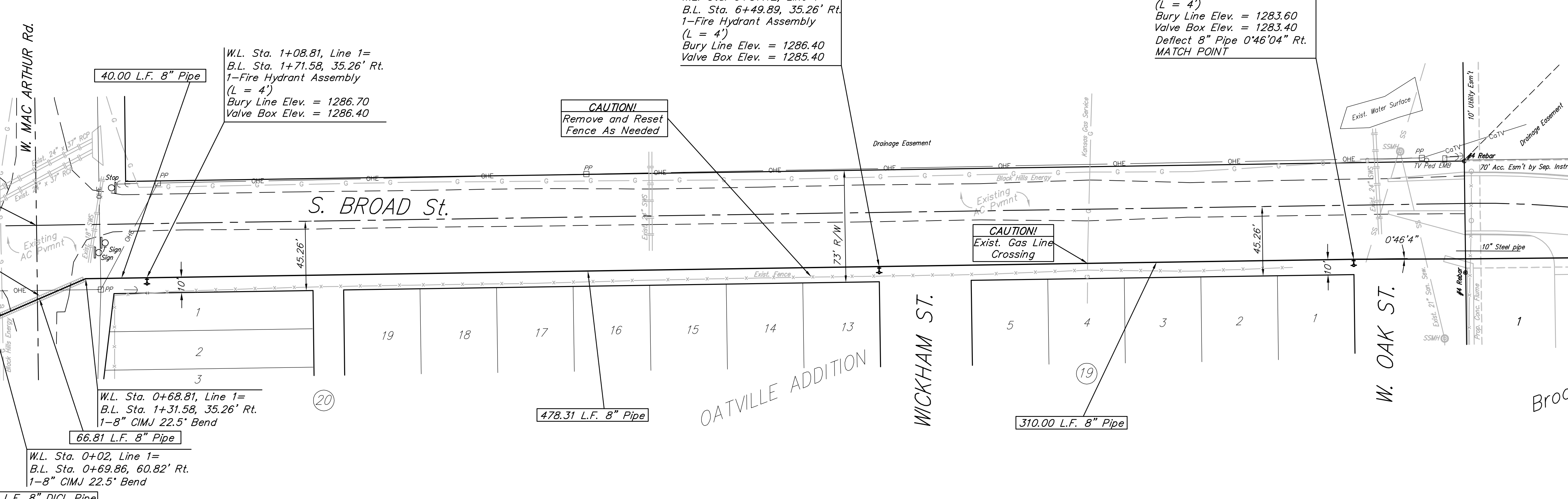
BENCHMARKS:
 "a" Chiseled on West headwall of 7x5' RCBC under RR track approximately 1500' South of MacArthur Road in Mo. Pacific RR R/W.
 Elevation = 1288.67 M.S.L.

Scale: 1" = 40' Horizontal
 1" = 5' Vertical
 • = Iron

WARNING!
 Exist. 4" ConocoPhillips Jet Fuel Line Crossing. Contact Scott Salisbury @ 681-2081, ext. 12, prior to working around fuel line. ConocoPhillips Representative shall be on site during construction around fuel line.

W.L. Sta. 0+00, Line 1 = B.L. Sta. 0+67.86 60.82' Rt. Connect to Existing 12" Water Line. #1 - 12"x8" Tapping Tee #1 - 8" Tapping Valve Assy. (S) #1 - 6" Valve Box Valve Box Elev. = 1287.40 (Match) Contractor to Verify Depth & Location of Existing 12" Water Line Prior to Construction. * Furnished and Installed by City of Wichita Water Department.

1295	W.L. Sta. 0+00, Line 1 = B.L. Sta. 0+67.86 60.82' Rt. Connect to Existing 12" Water Line. #1 - 12"x8" Tapping Tee #1 - 8" Tapping Valve Assy. (S) #1 - 6" Valve Box Valve Box Elev. = 1287.40 (Match) Contractor to Verify Depth & Location of Existing 12" Water Line Prior to Construction. * Furnished and Installed by City of Wichita Water Department.	1295
1290		1290
1285		1285
1280	WARNING! Exist. Jet Fuel and Gas Line Crossing	1280
1275		1275



1295	W.L. Sta. 0+00, Line 1 = B.L. Sta. 0+67.86 60.82' Rt. Connect to Existing 12" Water Line. #1 - 12"x8" Tapping Tee #1 - 8" Tapping Valve Assy. (S) #1 - 6" Valve Box Valve Box Elev. = 1287.40 (Match) Contractor to Verify Depth & Location of Existing 12" Water Line Prior to Construction. * Furnished and Installed by City of Wichita Water Department.	1295
1290		1290
1285		1285
1280		1280
1275		1275

Baughman Broad Street Addition
LINE 1
 Water Distribution System

Baughman Company, P.A. 315 Ellis St. Wichita, KS 67211 P 316-262-7271 F 316-262-0149
 ENGINEERING | SURVEYING | PLANNING | LANDSCAPE ARCHITECTURE

PROJECT NUMBER 448-89718	DESIGN MWS	DRAWN GRF
APPROVED MWS	DATE 02/09	
REVISIONS:	SCALE Noted	SHEET

3 OF 10

E:\eng\Seeders\Waterline\003 Wtr1.dwg 08-12-E251