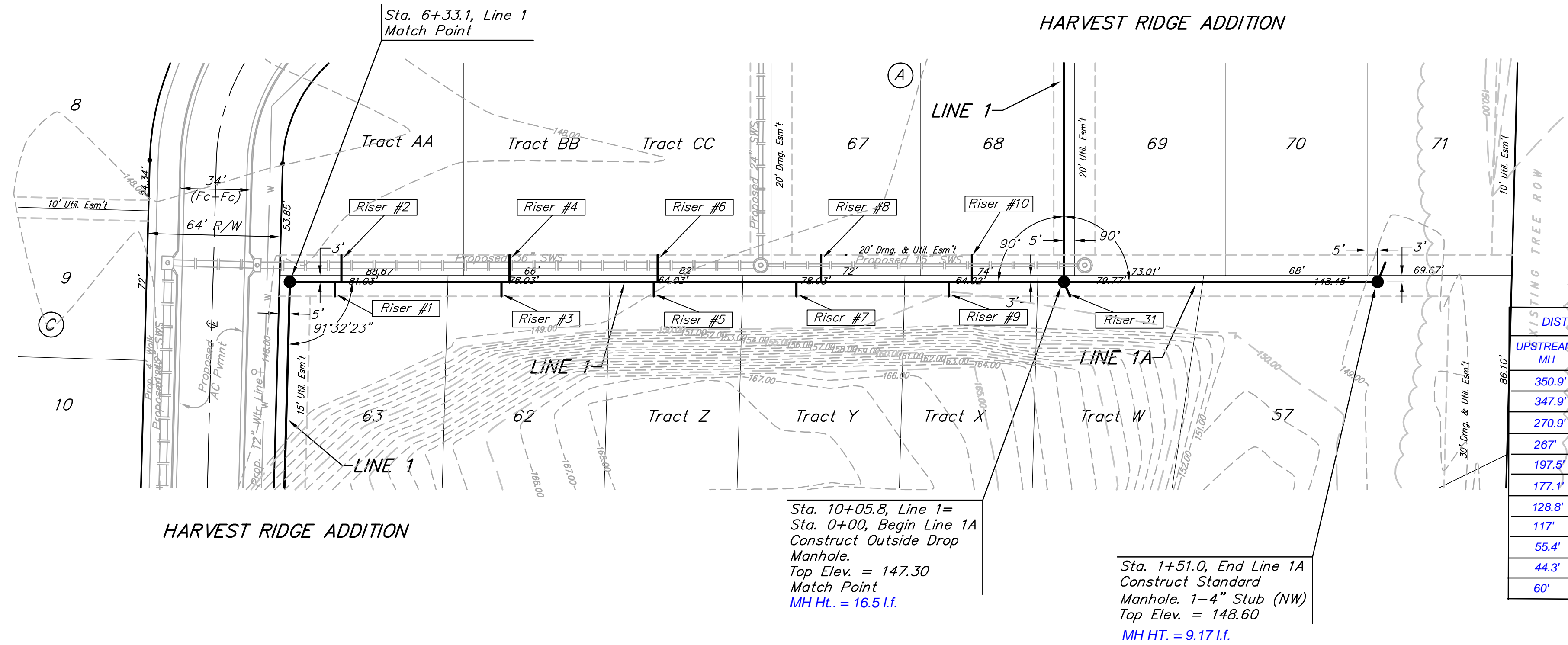


**Benchmarks:**  
 BM #1: Small RR spike in 2nd PP north of K-42 Highway, west side of Maize Elev. = 143.61 (City Datum)  
 BM #2: Small RR spike in PP east of East 1/4 Corner (G) Elev. = 147.00 (City Datum)  
 BM #3: "□" Top Headwall southeast corner K-42 Highway and Maize (County BM with City Datum) Elev. = 144.04 (City Datum)

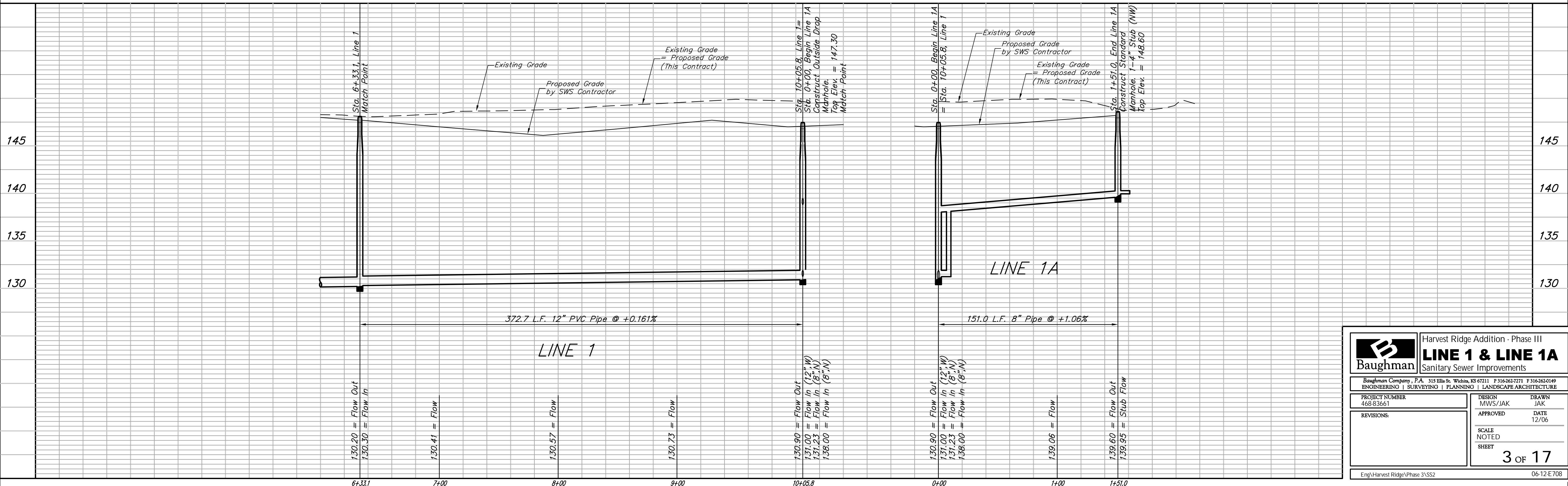
SCALE:  
 1" = 40' HORIZONTAL  
 1" = 5' VERTICAL  
 • = IRON



Existing Trees Shall be removed ONLY with approval of the Engineer. Trees Not In Direct Conflict With Proposed New Construction Shall Remain And Be Protected From Damage. Cost to be Included in Bid Item "Site Clearing & Restoration"

DISTANCE FROM		NUMBER	TYPE	LOCATION			FOR INFORMATION ONLY		
UPSTREAM MH	DOWNSTREAM MH			LOT NO.	BLOCK NO.	LINE NO.	STATION \ DIRECTION	APPROXIMATE LENGTH 4" PIPE	
							VERTICAL	HORIZONTAL	
350.9'	21.8'	1	8" X 4" Tee	63	A	1	6+54.9/Rt.	14'	7'
347.9'	24.8'	2	8" X 4" Tee	Tr. AA	A	1	6+57.9/Lt.	14'	13'
270.9'	101.8'	3	8" X 4" Tee	62	A	1	7+34.9/Rt.	14'	7'
267'	105.7'	4	8" X 4" Tee	Tr. BB	A	1	7+38.8/Lt.	14'	13'
197.5'	175.2'	5	8" X 4" Tee	Tr. Z	A	1	8+08.3/Rt.	14'	7'
177.1'	195.6'	6	8" X 4" Tee	Tr. CC	A	1	8+10.2/Lt.	14'	13'
128.8'	243.9'	7	8" X 4" Tee	Tr. Y	A	1	8+77.0/Rt.	14'	7'
117'	255.7'	8	8" X 4" Tee	67	A	1	8+88.8/Lt.	14'	13'
55.4'	317.3'	9	8" X 4" Tee	Tr. X	A	1	9+50.4/Rt.	14'	7'
44.3'	328.4'	10	8" X 4" Tee	68	A	1	9+61.5/Lt.	14'	13'
60'	158.8'	31	4" Stub w/ Riser	Tr. W	A	1	10+05.8/Rt.	14'	7.6' 9'

NOTE: Vertical Riser Pipe shall be extended to 2' minimum above ground water elevation and 4' maximum below proposed ground elevation.



**Baughman** Harvest Ridge Addition - Phase III  
**LINE 1 & LINE 1A**  
 Sanitary Sewer Improvements

PROJECT NUMBER: 468-83661  
 DESIGN: MWS/JAK  
 DRAWN: JAK  
 APPROVED: DATE: 12/06  
 SCALE: NOTED  
 SHEET: 3 OF 17

Eng:\Harvest Ridge\Phase 3\SS2 06-12-E708