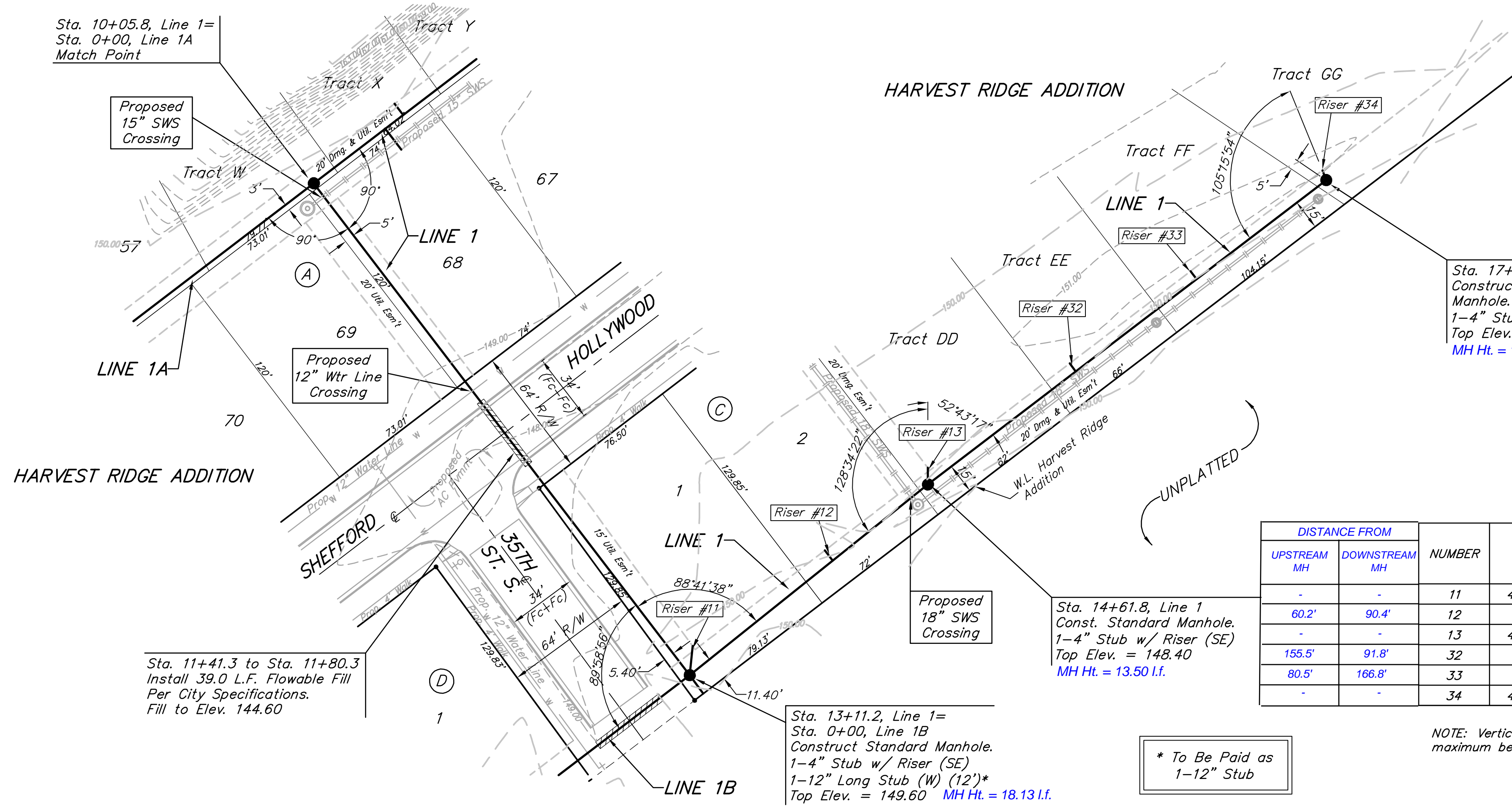


Benchmarks:
 BM #1: Small RR spike in 2nd PP north of K-42 Highway, west side of Maize Elev. = 143.61 (City Datum)
 BM #2: Small RR spike in PP east of East 1/4 Corner (G) Elev. = 147.00 (City Datum)
 BM #3: "□" Top Headwall southeast corner K-42 Highway and Maize (County BM with City Datum) Elev. = 144.04 (City Datum)



SCALE:
 1" = 40' HORIZONTAL
 1" = 5' VERTICAL
 • = IRON

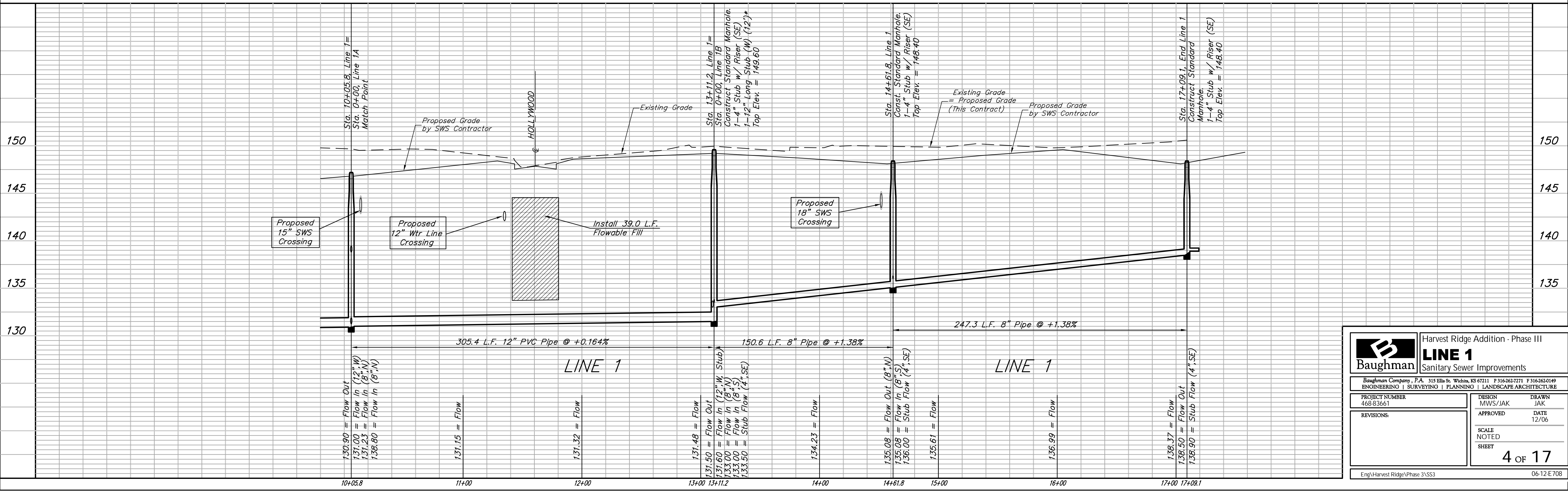
Existing Trees Shall be removed ONLY with approval of the Engineer. Trees Not In Direct Conflict With Proposed New Construction Shall Remain And Be Protected From Damage. Cost to be included in Bid Item "Site Clearing & Restoration"

SEWER SERVICE TABLE

DISTANCE FROM		NUMBER	TYPE	LOCATION			FOR INFORMATION ONLY		
UPSTREAM MH	DOWNSTREAM MH			LOT NO.	BLOCK NO.	LINE NO.	STATION \ DIRECTION	APPROXIMATE LENGTH 4" PIPE	
-	-	11	4" Stub w/ Riser	1	C	1	13+11.2/Lt.	14'	15'
60.2'	90.4'	12	8" X 4" Tee	2	C	1	14+01.6/Lt.	13'	7'
-	-	13	4" Stub w/ Riser	Tr. DD	C	1	14+61.8/Lt.	12'	9'
155.5'	91.8'	32	8" X 4" Tee	Tr. EE	C	1	15+53.6/Lt.	11'	5'
80.5'	166.8'	33	8" X 4" Tee	Tr. FF	C	1	16+28.6/Lt.	9'	5'
-	-	34	4" Stub w/ Riser	Tr. GG	C	1	17+09.1/Lt.	8'	6'

NOTE: Vertical Riser Pipe shall be extended to 2' minimum above ground water elevation and 4' maximum below proposed ground elevation.

* To Be Paid as 1-12" Stub



Baughman Harvest Ridge Addition - Phase III
LINE 1
 Sanitary Sewer Improvements

Baughman Company, P.A. 315 Ella St. Wichita, KS 67211 P 316-262-7771 F 316-262-0149
 ENGINEERING | SURVEYING | PLANNING | LANDSCAPE ARCHITECTURE

PROJECT NUMBER: 468-83661 DESIGN: MWS/JAK DRAWN: JAK
 REVISIONS: APPROVED: DATE: 12/06
 SCALE: NOTED SHEET: 4 OF 17

Eng\Harvest Ridge\Phase 3\SS3 06-12-E708