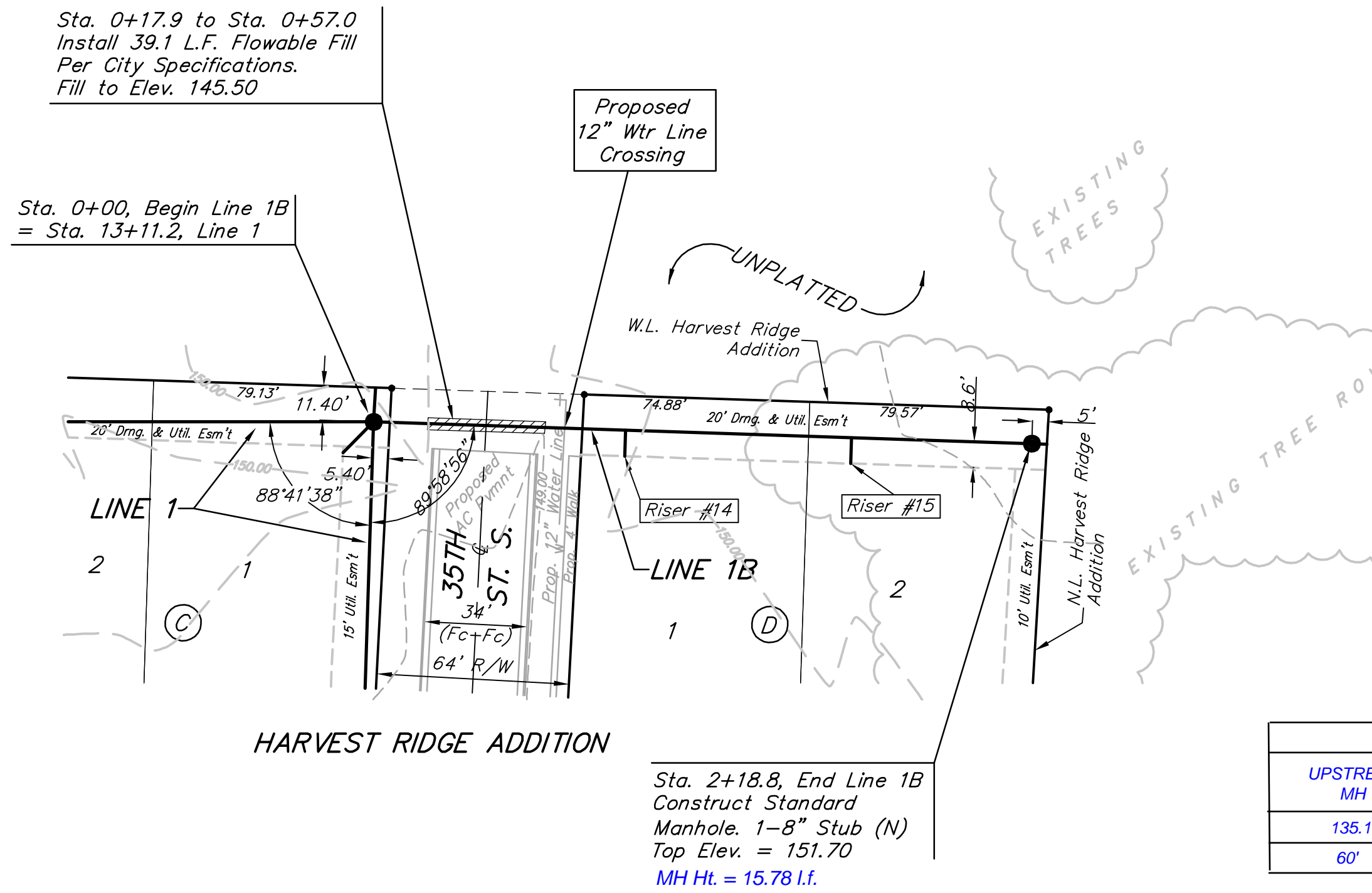


**Benchmarks:**

BM #1: Small RR spike in 2nd PP north of K-42 Highway, west side of Maize Elev. = 143.61 (City Datum)

BM #2: Small RR spike in PP east of East 1/4 Corner (G) Elev. = 147.00 (City Datum)

BM #3: "□" Top Headwall southeast corner K-42 Highway and Maize (County BM with City Datum) Elev. = 144.04 (City Datum)



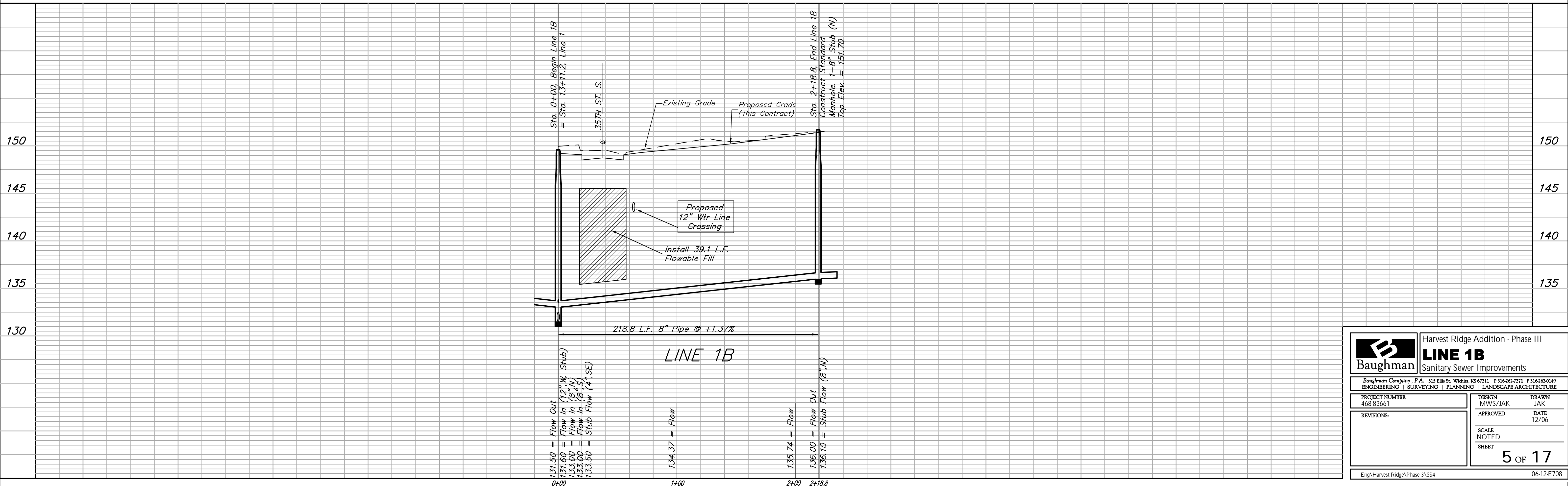
Existing Trees Shall be removed ONLY with approval of the Engineer. Trees Not In Direct Conflict With Proposed New Construction Shall Remain And Be Protected From Damage. Cost to be Included in Bid Item "Site Clearing & Restoration"

SCALE:  
1" = 40' HORIZONTAL  
1" = 5' VERTICAL  
• = IRON

SEWER SERVICE TABLE

| DISTANCE FROM |               | NUMBER | TYPE         | LOCATION |           |          | FOR INFORMATION ONLY |                            |    |
|---------------|---------------|--------|--------------|----------|-----------|----------|----------------------|----------------------------|----|
| UPSTREAM MH   | DOWNSTREAM MH |        |              | LOT NO.  | BLOCK NO. | LINE NO. | STATION DIRECTION    | APPROXIMATE LENGTH 4" PIPE |    |
| 135.1'        | 83.7'         | 14     | 10" X 4" Tee | 1        | D         | 1B       | 0+83.7/Rt.           | 14'                        | 9' |
| 60'           | 158.8'        | 15     | 10" X 4" Tee | 2        | D         | 1B       | 1+58.8/Rt.           | 14'                        | 9' |

NOTE: Vertical Riser Pipe shall be extended to 2' minimum above ground water elevation and 4' maximum below proposed ground elevation.



|   |   |                            |
|---|---|----------------------------|
|   | Harvest Ridge Addition - Phase III            |                            |
|   | <b>LINE 1B</b><br>Sanitary Sewer Improvements |                            |
| <small>Baughman Company, P.A. 315 Ellis St. Wichita, KS 67211 P 316-262-7771 F 316-262-0149<br/>ENGINEERING   SURVEYING   PLANNING   LANDSCAPE ARCHITECTURE</small> |   |                            |
| PROJECT NUMBER<br>468-83661   | DESIGN<br>MWS/JAK                             | DRAWN<br>JAK               |
| REVISIONS:  | APPROVED                                      | DATE<br>12/06              |
| SCALE<br>NOTED  |   | SHEET<br><b>5 OF 17</b>    |
| <small>Eng\Harvest Ridge\Phase 3\SS4</small>  |   | <small>06-12-E-708</small> |