

Benchmarks:

BM #1: Small RR spike in 2nd PP north of K-42 Highway, west side of Maize
Elev. = 143.61 (City Datum)

BM #2: Small RR spike in PP east of East 1/4 Corner (G)
Elev. = 147.00 (City Datum)

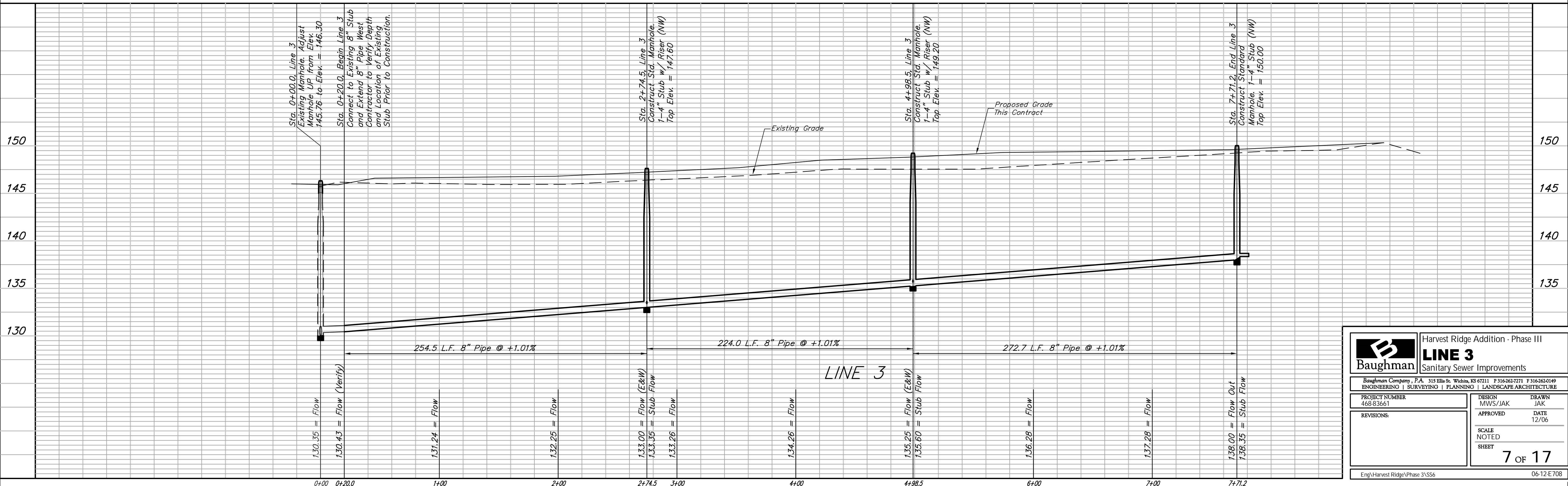
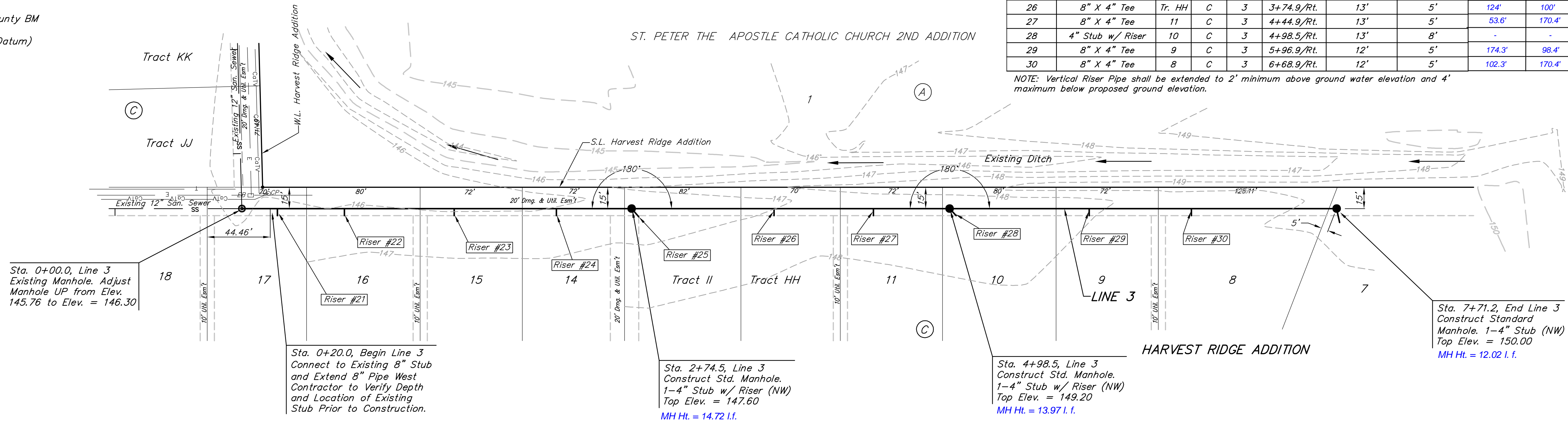
BM #3: "□" Top Headwall southeast corner K-42 Highway and Maize (County BM with City Datum)
Elev. = 144.04 (City Datum)

SEWER SERVICE TABLE

NUMBER	TYPE	LOCATION			FOR INFORMATION ONLY		DISTANCE FROM		
		LOT NO.	BLOCK NO.	LINE NO.	STATION \ DIRECTION	APPROXIMATE LENGTH 4" PIPE VERTICAL	HORIZONTAL	UPSTREAM MH	DOWNSTREAM MH
21	8" X 4" Tee	17	C	3	0+25.0/Rt.	14'	5'	249.5'	25'
22	8" X 4" Tee	16	C	3	0+72.2/Rt.	13'	5'	202.3'	72.2'
23	8" X 4" Tee	15	C	3	1+49.5/Rt.	14'	5'	125'	149.5'
24	8" X 4" Tee	14	C	3	2+21.5/Rt.	12'	5'	53'	221.5'
25	4" Stub w/ Riser	Tr. II	C	3	2+74.5/Rt.	13'	7'	-	-
26	8" X 4" Tee	Tr. HH	C	3	3+74.9/Rt.	13'	5'	124'	100'
27	8" X 4" Tee	11	C	3	4+44.9/Rt.	13'	5'	53.6'	170.4'
28	4" Stub w/ Riser	10	C	3	4+98.5/Rt.	13'	8'	-	-
29	8" X 4" Tee	9	C	3	5+96.9/Rt.	12'	5'	174.3'	98.4'
30	8" X 4" Tee	8	C	3	6+68.9/Rt.	12'	5'	102.3'	170.4'

NOTE: Vertical Riser Pipe shall be extended to 2' minimum above ground water elevation and 4' maximum below proposed ground elevation.

SCALE:
1" = 40' HORIZONTAL
1" = 5' VERTICAL
• = IRON



Baughman Harvest Ridge Addition - Phase III
LINE 3
Sanitary Sewer Improvements

PROJECT NUMBER: 468-83661
DESIGN: MWS/JAK
DRAWN: JAK
APPROVED: [Signature]
DATE: 12/06

REVISIONS:

SCALE: NOTED
SHEET: 7 OF 17

Eng\Harvest Ridge\Phase 3\SS6 06-12-E708