

**BENCHMARKS:**

BM #1: "C" Cut on Top of Curb at West Line of Lot 7, Block A, Auburn Hills 5th Addition. Elev. = 207.73 (City Datum)

BM #2: Disc in Back of Curb, North of Front Corner Common to Lots 23 and 24, Block D, Auburn Hills 12th Addition. Elev. = 191.84 (City Datum)

BM #3: "C" Cut in Middle of Curb Inlet Top Adjacent to the South Corner of Lot 15, Block B. Elev. = 193.65 (City Datum)

Contractor shall extend 4" pipe 10 L.F. from each side of wye (20 L.F. Total. Cost of 4" Pipe shall be incidental to cleanout assy.

Cleanout #1 Install Std. 8" Cleanout (Double Wye) Assy. w/ 74.6 L.F. 8" Pipe

Sta. 0+53.5 to 0+73.5 Encase 20 L.F. 8" Pipe with Reinforced Concrete

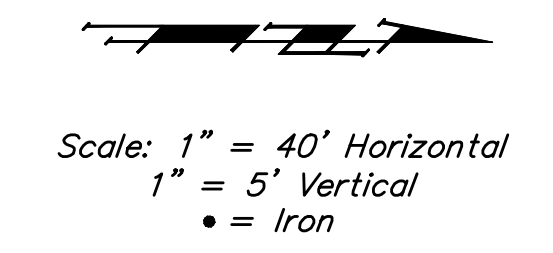
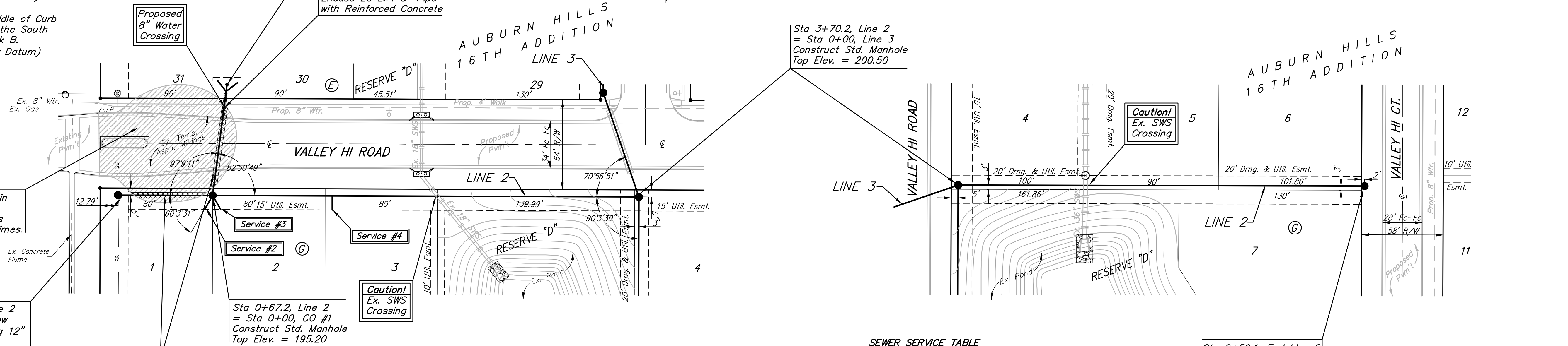
Contractor shall maintain temporary turn-around access for school buses and fire trucks at all times.

Sta 0+00, Begin Line 2 Construct Std. Shallow Manhole over Existing 12" Sanitary Sewer. Top Elev. = 192.30

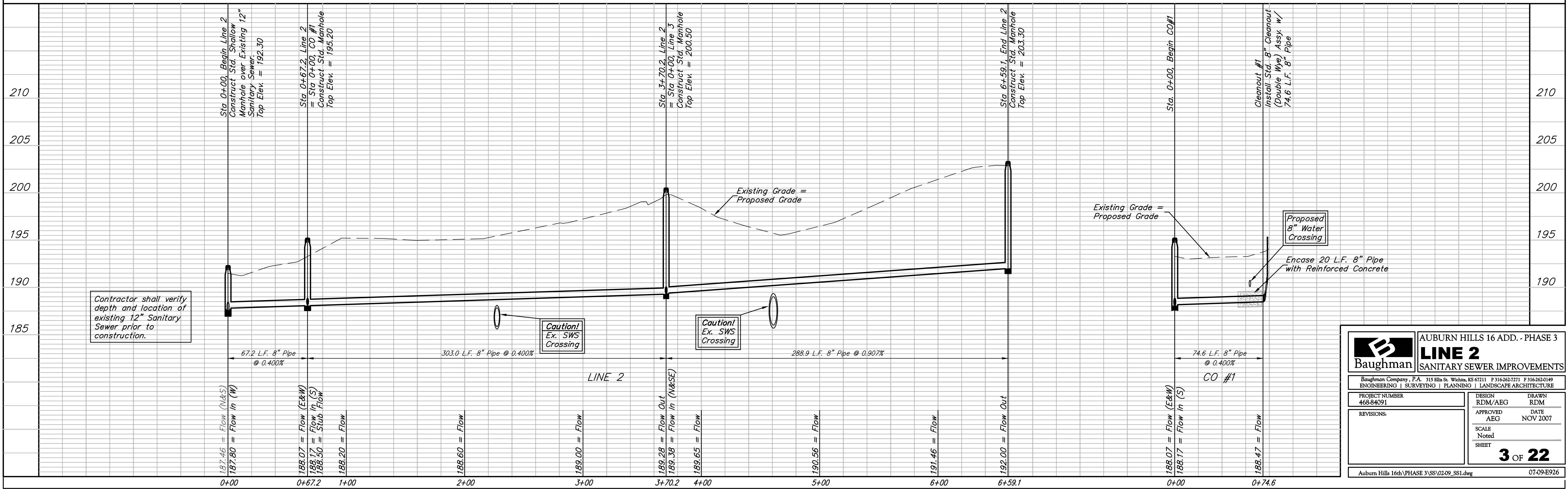
Sta 0+67.2, Line 2 = Sta 0+00, CO #1 Construct Std. Manhole Top Elev. = 195.20

Remove and Replace Temp. Asphalt Millings as necessary for San. Sewer construction.

From Station 0+00 to Station 3+70.2, Line 1, the trenches shall be Backfilled with Sand, Jetted, and Vibrated, except for locations where flowable fill is to be installed.



| NUMBER | CONNECTION TYPE | LOCATION |           |          | STATION/DIRECTION | FOR INFORMATION ONLY APPROXIMATE LENGTH 4" PIPE |            | DISTANCE FROM |                |
|--------|-----------------|----------|-----------|----------|-------------------|---|------------|---------------|----------------|
|        |                 | LOT NO.  | BLOCK NO. | LINE NO. |                   | VERTICAL  | HORIZONTAL | UPSTREAM MH   | DOWNSIDE MH    |
| 2      | 4" Stub         | 1        | G         | 2        | 0+67.2/Rt.        | 2   | 12         | 11.6 Rt.      | Stub           |
| 3      | 4" Stub         | 2        | G         | 2        | 0+67.2/Rt.        | 2   | -12        | 11.8 Rt.      | Stub           |
| 4      | 10" x 4" Tee    | 3        | G         | 2        | 1+52.2/Rt.        | 2   | 10         | 10 Rt.        | 218.4' / 85.6' |



**Baughman** AUBURN HILLS 16 ADD. - PHASE 3  
**LINE 2**  
**SANITARY SEWER IMPROVEMENTS**

PROJECT NUMBER: 468-84091  
 DESIGN: RDM/AEG  
 DRAWN: RDM  
 APPROVED: AEG  
 DATE: NOV 2007  
 SCALE: Noted  
 SHEET: 3 OF 22

Auburn Hills 16th\PHASE 3\SS\0209\_SSI.dwg 07-09-E926