

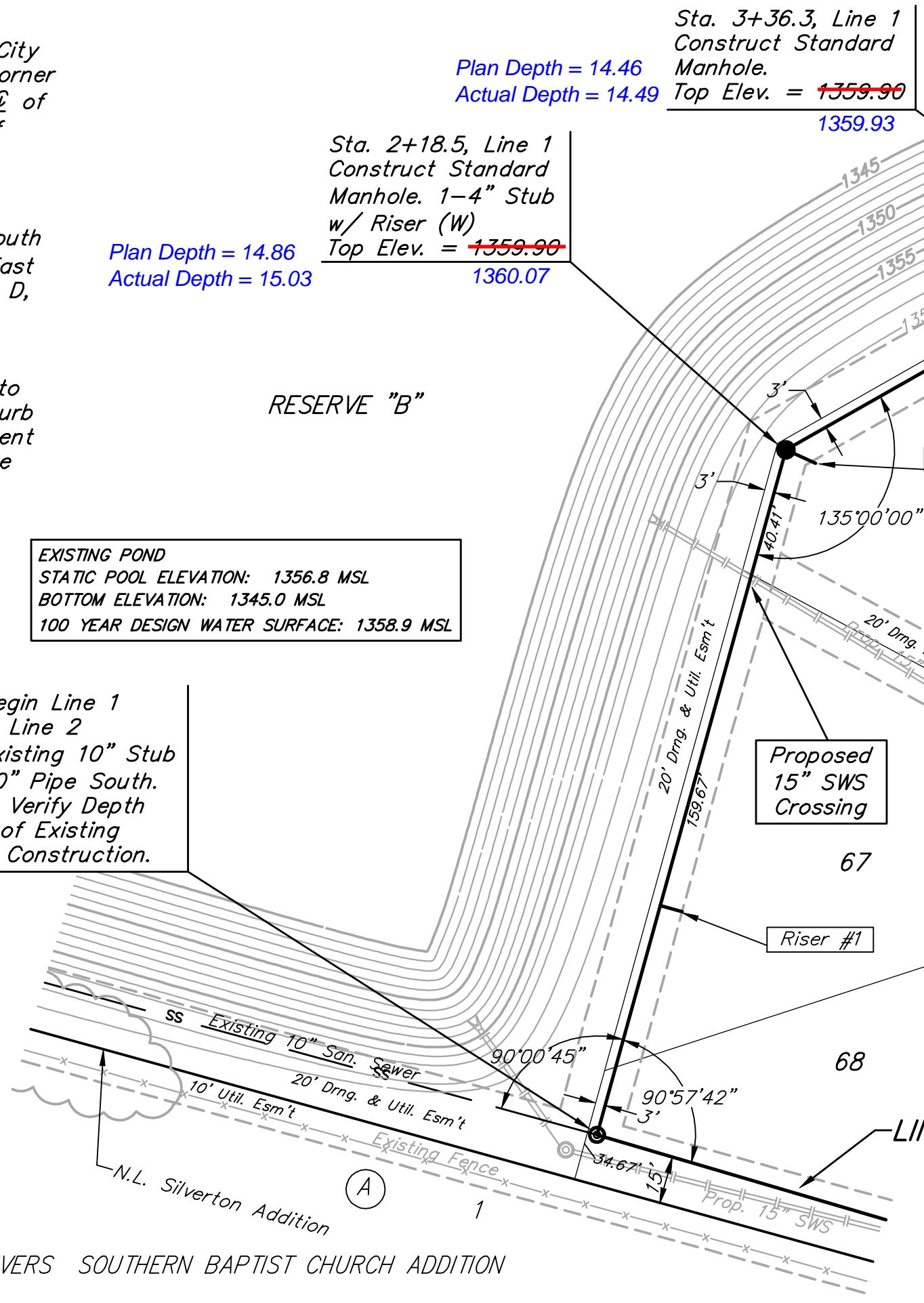
BENCHMARKS:
 135th St. W. & 13th St. N. - City of Wichita Disc at Southwest Corner of Intersection, 30.00'± S. of C of 13th St. N. 35.00'± W. of C of 135th St. W.
 Elev. = 1355.65 MSL

"□" Cut in Top of Curb 10' South of end of Existing Pavement, East Curb adjacent to Lot 12, Block D, Copper Gate North Addition.
 Elev. = 1362.13 MSL

BM Disc in top Curb Adjacent to Fire Hydrant at E. End of N. Curb Return of Kiwi & Decker, adjacent to Lot 16, Block D, Copper Gate North Addition.
 Elev. = 1361.04 MSL

EXISTING POND
 STATIC POOL ELEVATION: 1356.8 MSL
 BOTTOM ELEVATION: 1345.0 MSL
 100 YEAR DESIGN WATER SURFACE: 1358.9 MSL

Sta. 0+00, Begin Line 1 = Sta. 0+00, Line 2
 Connect to Existing 10" Stub and Extend 10" Pipe South. Contractor to Verify Depth and Location of Existing Stub Prior to Construction.



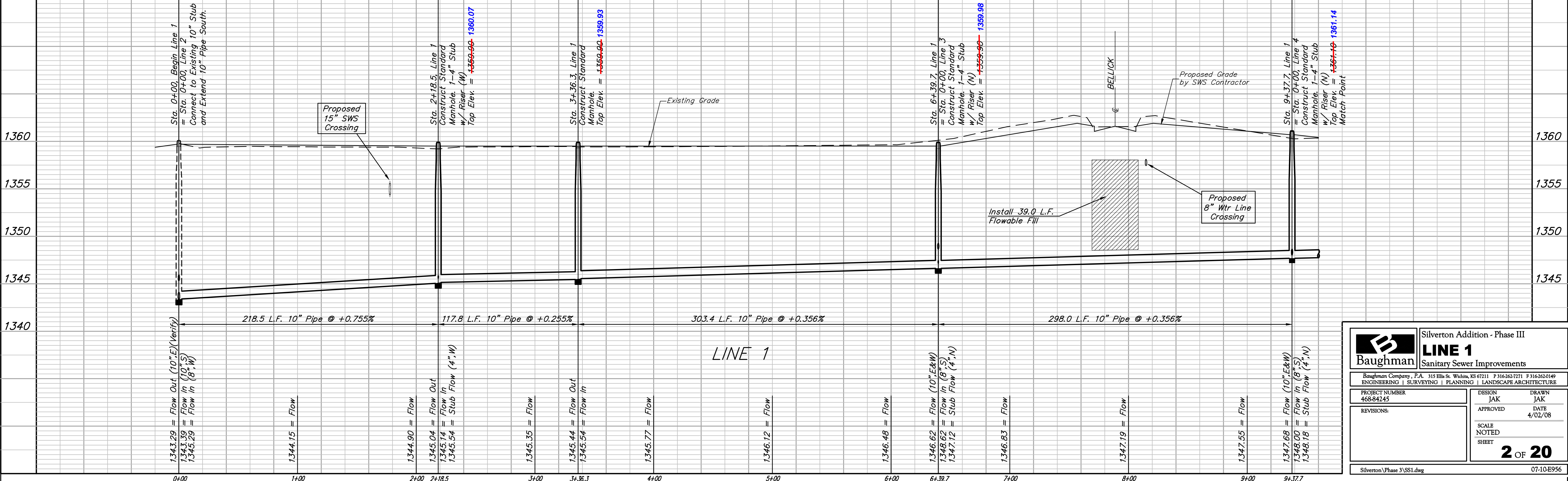
SEWER SERVICE TABLE

NUMBER	TYPE	LOCATION			FOR INFORMATION ONLY		
		LOT NO.	BLOCK NO.	LINE NO.	STATION/DIRECTION	APPROXIMATE LENGTH 4" PIPE	
					VERTICAL	HORIZONTAL	
1	10" X 4" Tee	67	C	1	0+73/Rt.	10.5'	7'
2	4" Stub w/ Riser	66	C	1	2+18.5/Rt.	9.5'	10'
3	10" X 4" Tee	65	C	1	3+79/Rt.	9'	7'
4	10" X 4" Tee	64	C	1	4+82/Rt.	8.5'	7'
5	10" X 4" Tee	63	C	1	5+53/Rt.	8.5'	7'
6	4" Stub w/ Riser	62	C	1	6+39.7/Rt.	8'	7'
7	10" X 4" Tee	61	C	1	7+04/Rt.	9'	6.5'
8	10" X 4" Tee	19	D	1	8+46/Rt.	9.5'	13.5'
9	4" Stub w/ Riser	18	D	1	9+37.7/Rt.	8'	13'

NOTE: Vertical Riser Pipe shall be extended to 2' minimum above ground water elevation and 4' maximum below proposed ground elevation.

PROPOSED POND
 STATIC POOL ELEVATION: 1358.0 MSL
 BOTTOM ELEVATION: 1350.0 MSL
 100 YEAR DESIGN WATER SURFACE: 1359.6 MSL

Riser No.	Location		Distance from		
	Line No.	Lot No.	Station	Upstream MH	Downstream MH
1	1	67	0+73	148'	72'
2	1	66	2+18.5	117'	220'
3	1	65	3+79	261'	42'
4	1	64	4+82	158'	145'
5	1	63	5+53	85'	218'
6	1	62	6+39.7	298'	303'
7	1	61	7+04	232'	67'
8	1	19	8+46	90'	209'
9	1	18	9+37.7	387.9'	298'



Silverton Addition - Phase III

LINE 1
Sanitary Sewer Improvements

Baughman Company, P.A. 315 Ellis St. Wichita, KS 67211 P 316-262-7271 F 316-262-0149
 ENGINEERING | SURVEYING | PLANNING | LANDSCAPE ARCHITECTURE

PROJECT NUMBER 468-84245	DESIGN JAK	DRAWN JAK
REVISIONS:	APPROVED	DATE 4/02/08
	SCALE NOTED	
	SHEET	

2 OF 20

Silverton Phase 3\SS1.dwg 07-10-E956