

**BENCHMARKS:**  
 135th St. W. & 13th St. N. - City of Wichita Disc at Southwest Corner of Intersection, 30.00'± S. of C of 13th St. N. 35.00'± W. of C of 135th St. W.  
 Elev. = 1355.65 MSL

"□" Cut in Top of Curb 10' South of end of Existing Pavement, East Curb adjacent to Lot 12, Block D, Copper Gate North Addition.  
 Elev. = 1362.13 MSL

BM Disc in top Curb Adjacent to Fire Hydrant at E. End of N. Curb Return of Kiwi & Decker, adjacent to Lot 16, Block D, Copper Gate North Addition.  
 Elev. = 1361.04 MSL

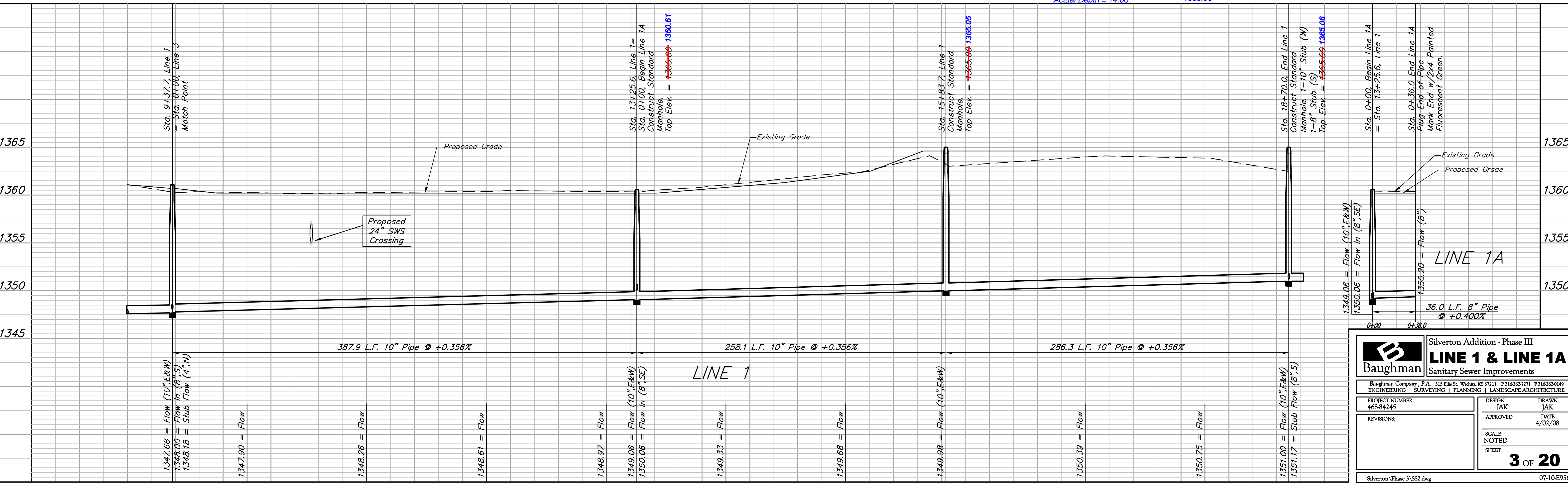
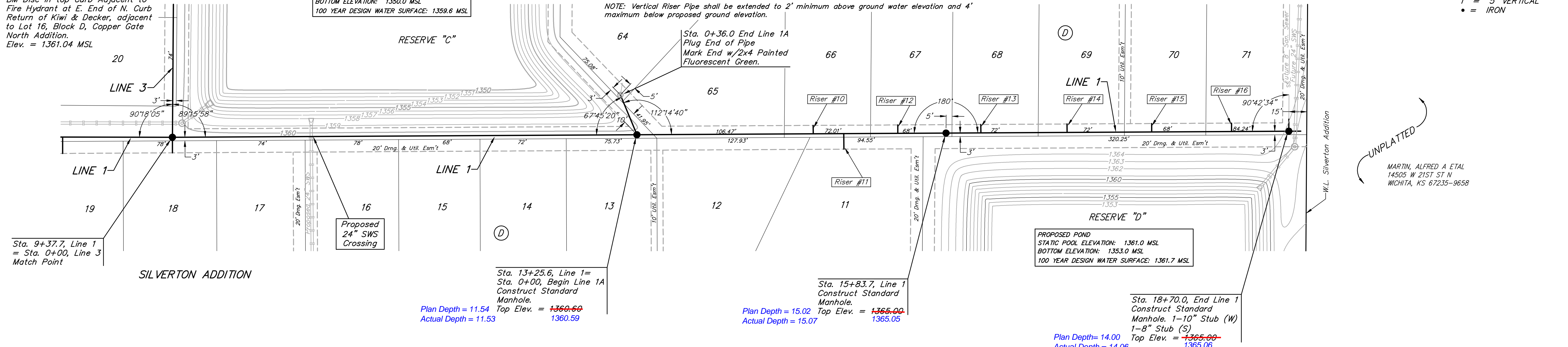
**PROPOSED POND**  
 STATIC POOL ELEVATION: 1358.0 MSL  
 BOTTOM ELEVATION: 1350.0 MSL  
 100 YEAR DESIGN WATER SURFACE: 1359.6 MSL

NUMBER	TYPE	LOCATION				FOR INFORMATION ONLY		DISTANCE FROM	
		LOT NO.	BLOCK NO.	LINE NO.	STATION/DIRECTION	APPROXIMATE LENGTH 4" PIPE		UPSTREAM MH	DOWNSTREAM MH
						VERTICAL	HORIZONTAL		
10	10" X 4" Tee	-67.66	D	1	14+73/Lt.	10'	7'	110'	145'
11	10" X 4" Tee	-66.11	D	1	14+98/Rt.	10'	13'	84'	171'
12	10" X 4" Tee	-65.67	D	1	15+43/Lt.	9.5'	7'	40'	215'
13	10" X 4" Tee	-64.68	D	1	16+13/Lt.	9.5'	7'	248'	41'
14	10" X 4" Tee	-63.69	D	1	16+85/Lt.	9'	7'	178'	111'
15	10" X 4" Tee	-62.70	D	1	17+56/Lt.	9'	7'	114'	175'
16	10" X 4" Tee	-61.71	D	1	18+22/Lt.	8.5'	7'	50'	239'

NOTE: Vertical Riser Pipe shall be extended to 2' minimum above ground water elevation and 4' maximum below proposed ground elevation.

SILVERTON ADDITION

SCALE:  
 1" = 40' HORIZONTAL  
 1" = 5' VERTICAL  
 • = IRON



**Baughman** Silvertown Addition - Phase III  
**LINE 1 & LINE 1A**  
 Sanitary Sewer Improvements

Baughman Company, P.A. 315 Ellis St. Wichita, KS 67211 P 316-262-7271 F 316-262-0149  
 ENGINEERING | SURVEYING | PLANNING | LANDSCAPE ARCHITECTURE

PROJECT NUMBER 468-84245	DESIGN JAK	DRAWN JAK
REVISIONS:	APPROVED	DATE 4/02/08
	SCALE NOTED	SHEET 3 OF 20

Silvertown Phase 3 (SS2).dwg 07-10-E956