

BENCHMARKS:
 135th St. W. & 13th St. N. - City of Wichita Disc at Southwest Corner of Intersection, 30.00'± S. of ☐ of 13th St. N. 35.00'± W. of ☐ of 135th St. W.
 Elev. = 1355.65 MSL

"☐" Cut in Top of Curb 10' South of end of Existing Pavement, East Curb adjacent to Lot 12, Block D, Copper Gate North Addition.
 Elev. = 1362.13 MSL

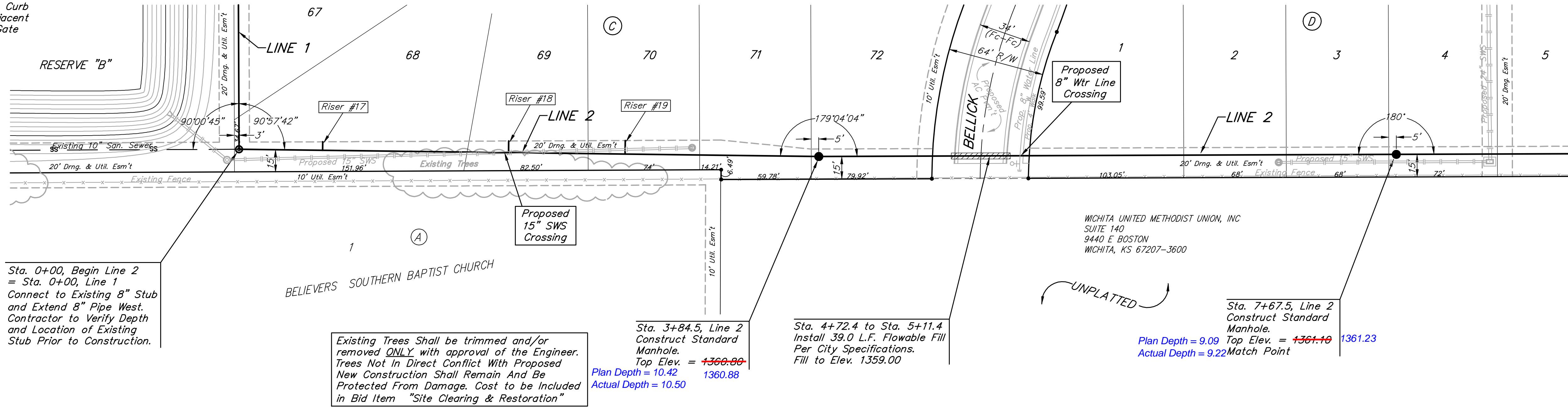
BM Disc in top Curb Adjacent to Fire Hydrant at E. End of N. Curb Return of Kiwi & Decker, adjacent to Lot 16, Block D, Copper Gate North Addition.
 Elev. = 1361.04 MSL

EXISTING POND
 STATIC POOL ELEVATION: 1356.8 MSL
 BOTTOM ELEVATION: 1345.0 MSL
 100 YEAR DESIGN WATER SURFACE: 1358.9 MSL

SEWER SERVICE TABLE

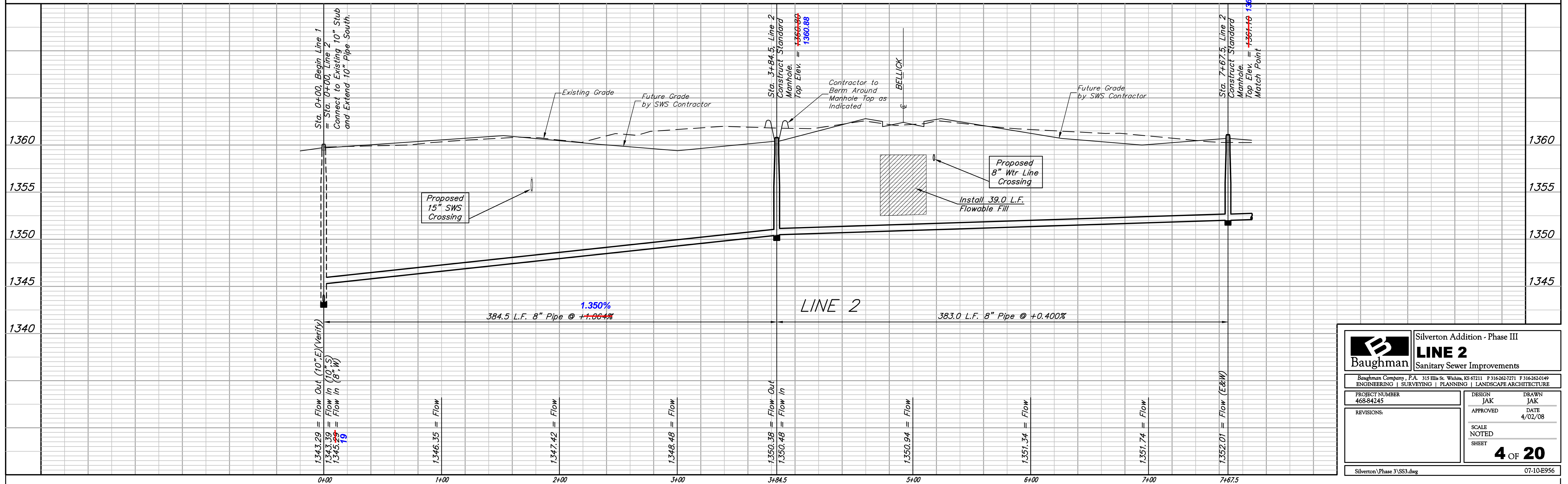
NUMBER	TYPE	LOCATION			FOR INFORMATION ONLY		DISTANCE FROM		
		LOT NO.	BLOCK NO.	LINE NO.	STATION/DIRECTION	APPROXIMATE LENGTH 4" PIPE	VERTICAL	HORIZONTAL	UPSTREAM MH
17	8" X 4" Tee	6768	C	+2	0+55/Lt.	9.5'	5.5'	330'	53'
18	8" X 4" Tee	6669	C	+2	1+79/Lt.	9.5'	8'	204'	179'
19	8" X 4" Tee	6570	C	+2	2+56/Lt.	9.5'	9'	129'	254'

NOTE: Vertical Riser Pipe shall be extended to 2' minimum above ground water elevation and 4' maximum below proposed ground elevation.



SILVERTON ADDITION

SCALE:
 1" = 40' HORIZONTAL
 1" = 5' VERTICAL
 • = IRON



B Baughman		Silvertown Addition - Phase III	
		LINE 2	
		Sanitary Sewer Improvements	
Baughman Company, P.A. 315 Ellis St. Wichita, KS 67211 P 316-262-7271 F 316-262-0149 ENGINEERING SURVEYING PLANNING LANDSCAPE ARCHITECTURE			
PROJECT NUMBER 468-84245	DESIGN JAK	DRAWN JAK	
REVISIONS:	APPROVED	DATE 4/02/08	
	SCALE NOTED		
	SHEET		
		4 OF 20	
Silvertown Phase 3 SS3.dwg		07-10-E956	