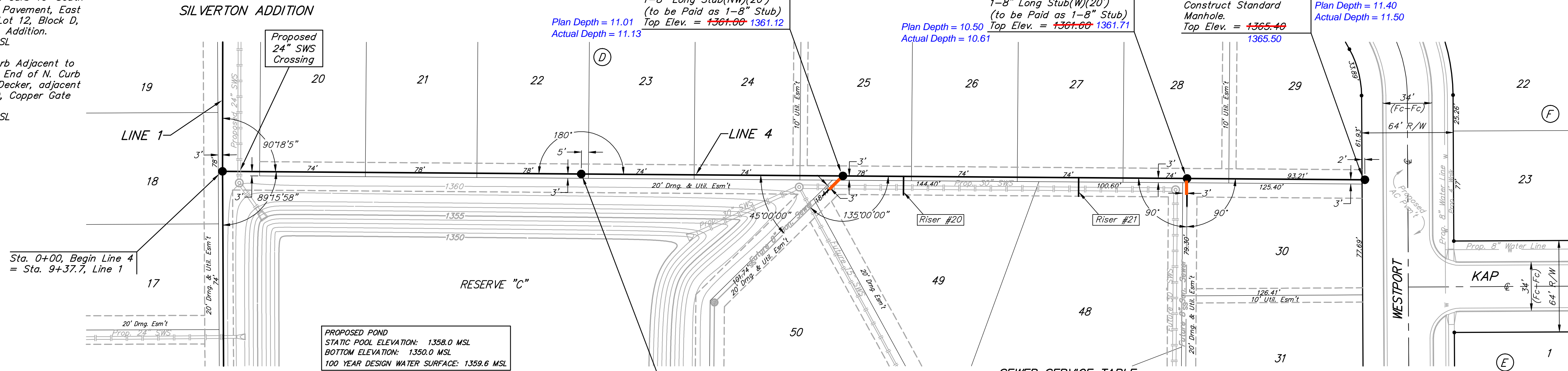


BENCHMARKS:
 135th St. W. & 13th St. N. - City of Wichita Disc at Southwest Corner of Intersection, 30.00± S. of \mathcal{Q} of 13th St. N. 35.00± W. of \mathcal{Q} of 135th St. W.
 Elev. = 1355.65 MSL

"□" Cut in Top of Curb 10' South of end of Existing Pavement, East Curb adjacent to Lot 12, Block D, Copper Gate North Addition.
 Elev. = 1362.13 MSL

BM Disc in top Curb Adjacent to Fire Hydrant at E. End of N. Curb Return of Kiwi & Decker, adjacent to Lot 16, Block D, Copper Gate North Addition.
 Elev. = 1361.04 MSL

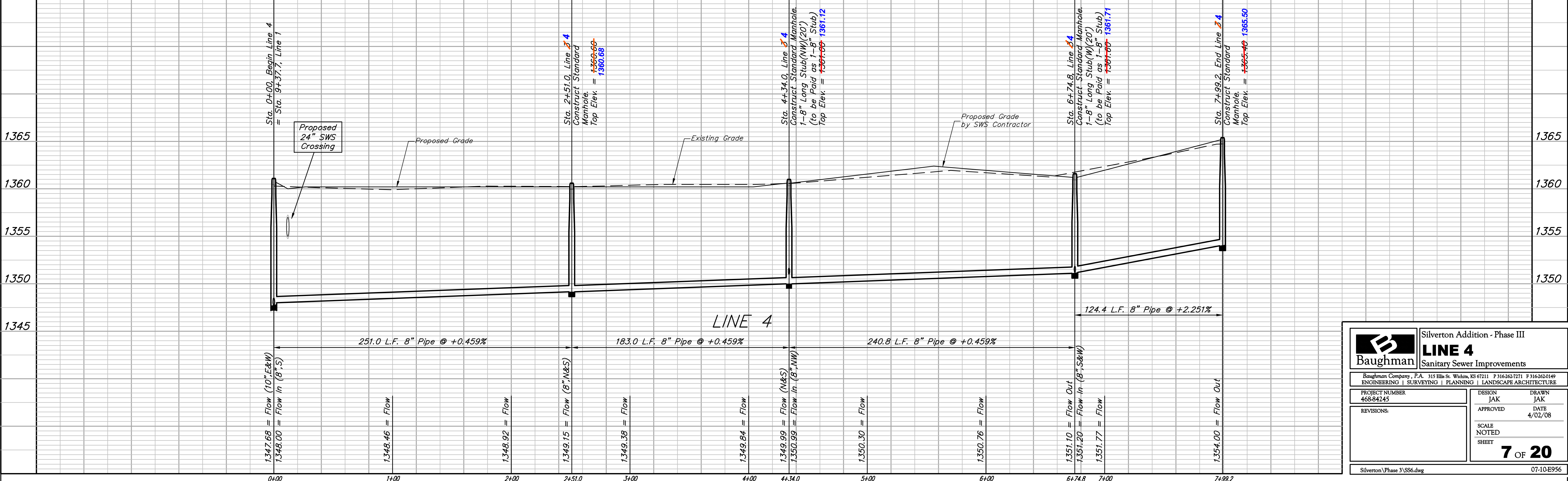


SCALE:
 1" = 40' HORIZONTAL
 1" = 5' VERTICAL
 • = IRON

SEWER SERVICE TABLE

NUMBER	TYPE	LOCATION			FOR INFORMATION ONLY		DISTANCE FROM SILVERTON ADDITION		
		LOT NO.	BLOCK NO.	LINE NO.	STATION/DIRECTION	APPROXIMATE LENGTH 4" PIPE	UPSTREAM MH	DOWNSTREAM MH	
20	8" X 4" Tee	49	D	4	4+77/Rt.	VERTICAL: 6'	HORIZONTAL: 13'	197'	43'
21	8" X 4" Tee	48	D	4	6+00/Rt.	VERTICAL: 6'	HORIZONTAL: 13'	74'	166'

NOTE: Vertical Riser Pipe shall be extended to 2' minimum above ground water elevation and 4' maximum below proposed ground elevation.



		Silverton Addition - Phase III LINE 4 Sanitary Sewer Improvements	
		<small>Baughman Company, P.A. 315 Ellis St. Wichita, KS 67211 P 316-262-7271 F 316-262-0149 ENGINEERING SURVEYING PLANNING LANDSCAPE ARCHITECTURE</small>	
PROJECT NUMBER 468-84245	DESIGN JAK	DRAWN JAK	7 OF 20
REVISIONS:	APPROVED JAK	DATE 4/02/08	
SCALE NOTED SHEET		Silverton Phase 3 SS6.dwg 07-10-E956	