

Lateral 43, Main 21, Sanitary Sewer Number 22 SANITARY SEWER IMPROVEMENTS

to serve

MESA VERDE ADDITION

CITY OF WICHITA, KANSAS

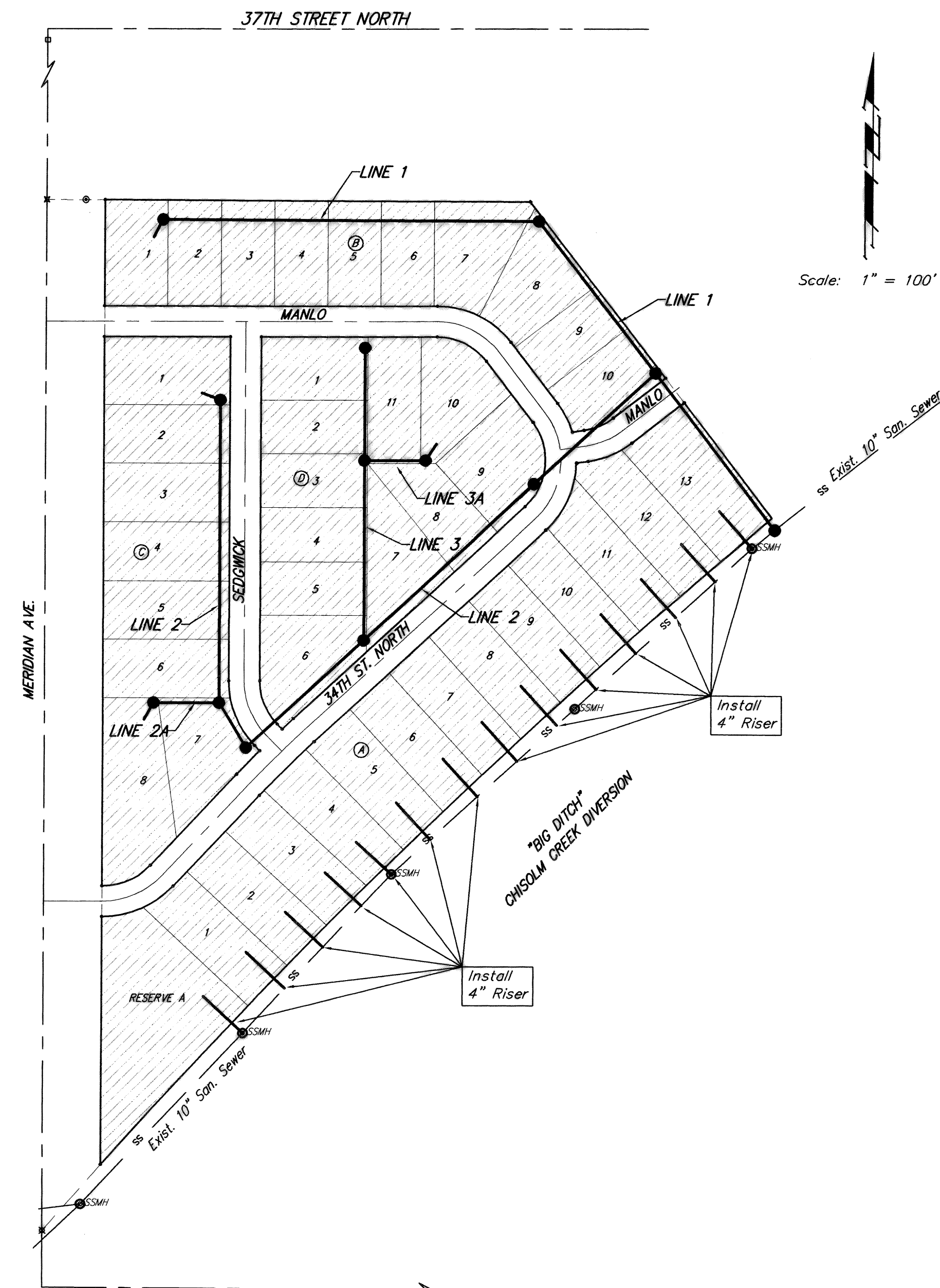
James L. Armour, P.E. City Engineer

Project Number

468-84284

O.C.A. Number

744259



Sheet Index

Title Sheet	1
Line 1	2
Line 2 & Line 2A	3-4
Line 3 & Line 3A	5
Risers on Existing Sewer	6
Standard Manhole Detail	7
Shallow Manhole Detail	8
Ring & Cover Detail	9
Vertical Riser Detail	10
Erosion Control Plan	11
Erosion Control Details	12-15
Coordinate Sheet	16
Copy of Plat	17

Benchmarks

- BM # 1 - City of Wichita Disc in the Northwest Corner of 37th Street North and Womer Elev. = 1324.06 MSL
- BM # 2 - "C" Cut on the Top of Curb in the NE Corner of the Parking Lot for The Word of Life Church at 37th Street North & Meridian. Elev. = 1323.11 MSL
- BM # 3 - RR Spike in the East Face of Light Pole at the Southwest Corner of 34th Street North & Meridian. Elev. = 1320.32 MSL

GENERAL NOTES:

- Contractor will be required to provide notice to utility companies a minimum of Forty-Eight (48) hours prior to any excavation, as follows:

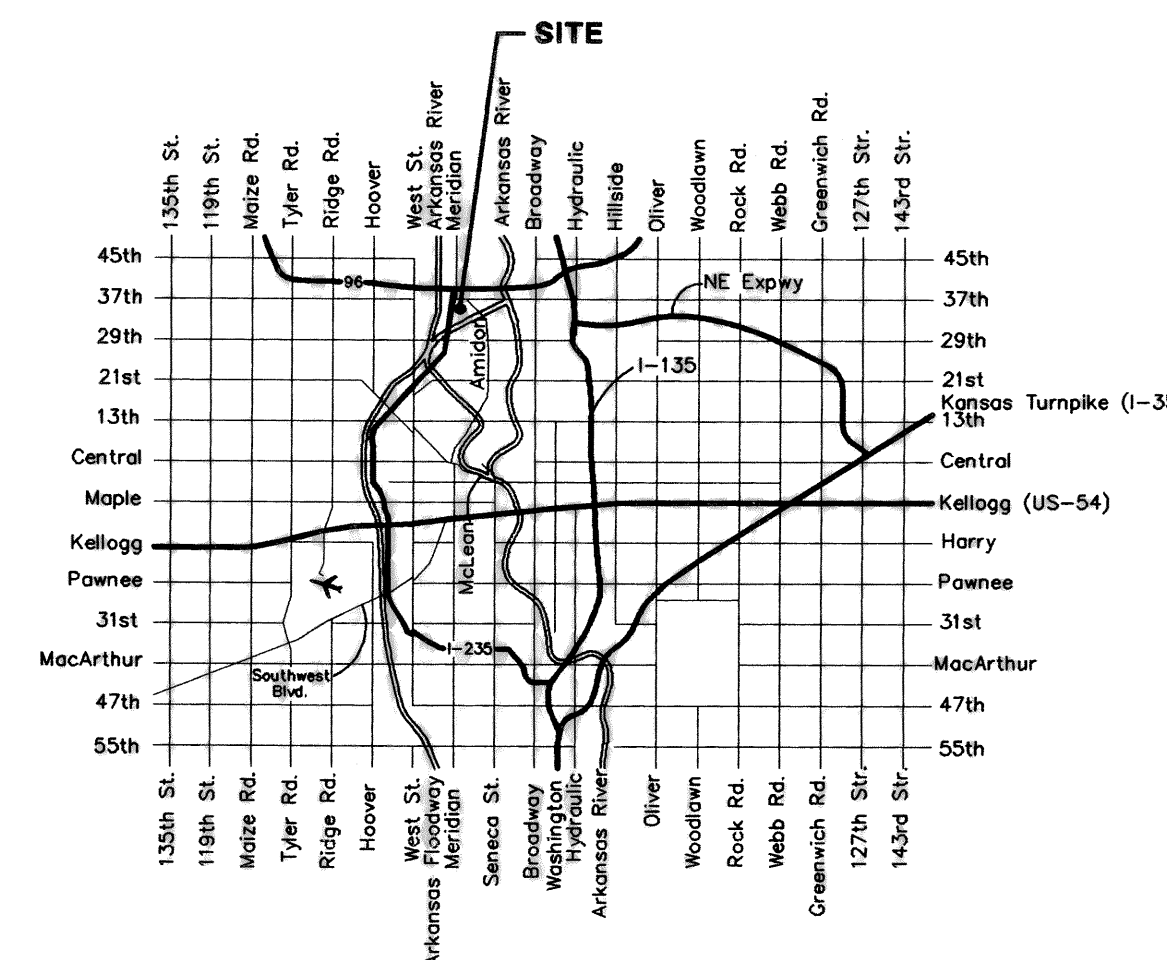
Kansas One-Call 687-2470

The Contractor must notify the following in case of an emergency:

Cox Communications	262-4270
Kansas Gas Service	1-888-482-4950
Westar Energy	383-8650
Aquila Energy	1-800-303-0357
Southwestern Bell	268-2245
City of Wichita Water Dept.	268-4563
City of Wichita Sewer Maint.	268-4024
City of Wichita Storm Sewer Maint.	268-4090
City of Wichita Traffic Maint.	268-4034
Conoco Pipeline Co.	1-800-231-2551
Williams Pipeline Co.	529-6600
Phillips Pipeline Co.	1-800-766-8230

- Utility service lines, poles, valve boxes, meters, and etcetera are to be adjusted as necessary by others prior to construction unless the plans specifically call for their adjustment by the Contractor or unless the plans specifically identify a utility to be adjusted by its owner during construction. Existing utilities and their location, as shown on the plans, represent the best information obtainable for design. The Contractor will be required to work around existing utilities within the right-of-way which do not conflict with proposed construction.
- Rubble from the removal of miscellaneous structures and excess excavation which is to be wasted shall be disposed of on sites to be provided by the Contractor. These sites shall be approved by the Engineer as to suitability, appearance on site location. Locations, in the opinion of the Engineer, will leave an unsightly appearance will not be approved. All disposal sites must be approved by the Kansas Department of Health and Environment. Material either stockpiled or disposed of in a flood plain would require a Kansas State Board of Agriculture permit. Any material dumped in waters of the United States or wetlands is subject to U.S. Corps of Engineers permitting regulations. Any material buried or stockpiled beyond approved construction limits would require additional archaeological investigations unless buried in a previously approved borrow location.
- Trees and shrubs in public right-of-way which are in direct conflict with proposed new construction shall be removed by the Contractor with the Engineer's approval. Trees and shrubs which are not in direct conflict with proposed new construction shall be saved and protected from damage.
- The Contractor shall give all property owners and/or tenants of developed property abutting the construction of this project a minimum of ten (10) days advance notice prior to start of construction.
- The Contractor shall be responsible for preserving property irons. The Contractor will be required to re-establish any property irons which are damaged or destroyed by his construction operations. Such irons shall be re-established by a licensed land surveyor in accordance with state laws.
- The Contractor shall be responsible for maintaining continuous flow of sewage through construction. Contractor's proposed method for maintaining sewage flow shall be approved by the Engineer. Cost of maintaining flow of sewage through construction will not be paid for directly and this cost shall be considered as subsidiary to the other pay items of work.
- All existing and proposed erosion control measures including silt fencing, erosion control mat, straw bales, inlet barriers, and const. entrance shall be maintained throughout construction by the contractor and until project is accepted by the City of Wichita. The on-site engineer shall complete weekly reports on the status of erosion control measures. The contractor shall be required to comply with maintenance and/or replacement of erosion control measures as determined by the on-site engineer until project is accepted by City of Wichita. Maintenance and/or replacement of erosion control measures to be paid by L.S. bid item "Site Clearing and Restoration."
- All areas disturbed during construction shall be seeded at 300 lbs./acre with Rye Grass immediately following construction in that area. Contractor shall prepare ground per City Specifications. Cost shall be paid by bid item "Project Seeding."
- The Contractor shall be required to backfill front loaded sanitary sewer trenches (Lots 6-9, Blk. D, & Lots 2-7, Block C) with sand, water-jetted and vibrated. Cost to be bid as "Sand Backfill Jetted and Vibrated".
- When connecting to existing manholes or stubs, the contractor shall reshape the manhole bottom or adjust the existing stub's alignment or elevation as necessary. Cost shall be subsidiary to project.
- Excess excavation shall remain on site and be spread or stockpiled at a location to be determined by Baughman Co., P.A.
- When installing 4" Risers On Existing 10" San. Sewer, the Contractor Shall Remove Existing Trees Only As Necessary For Construction AND With the Approval of the Engineer.
- The Developer of this project is Richard E. Lopez and may be reached at (316) 264-5372

Nowak Construction, Co. - Contractor
L. Weigant - City of Wichita, Inspector
Date Released: 01/07/09
As-built
Stubs and Risers
pdf: APR 01/16/09



Vicinity Map

Benefit District



Baughman Company, P.A. 315 Ellis St. Wichita, KS 67211 P 316-262-7271 F 316-262-0146
ENGINEERING | SURVEYING | PLANNING | LANDSCAPE ARCHITECTURE