

**BENCHMARK:**  
 BM #1: HOOVER AND 45TH ST. NORTH  
 - COW BENCHMARK AT NE CORNER OF  
 INTERSECTION, 10.20' SSE OF PP,  
 58.80' ESE OF PP ON NW CORNER,  
 85.50' NE OF GAS LINE MARKER,  
 59.00' NORTH OF GAS LINE MARKER,  
 28.50' EAST OF CENTERLINE, 14.50'  
 NORTH OF CENTERLINE.  
 ELEV. = 1335.29 (NGVD 29)

BM #2: Small RR spike in 3rd PP west  
 of Hoover St. on the north side of  
 45th St. N.  
 Elev. = 1337.68

BM #3: Small RR spike in 2nd PP east  
 of NW Corner of SEC. 27, TWP. 26-S,  
 R-1-W. (North side of 45th St. N.,  
 west of Hoover St.)  
 Elev. = 1339.57

BM #4: 60d nail in PP at the SE  
 corner of exception on west side of  
 Hoover St., south of 45th St. N.  
 Elev. = 1335.26

Sta 0+00 to Sta 0+50  
 Pipe and manhole locations  
 may be adjusted in the  
 field to preserve tree row,  
 especially larger trees.

Sta 0+00, Begin Line 7  
 = Sta 7+04.9, Line 6

Sta 7+03.6, Line 7  
 Construct std. manhole.  
 1 - 4" Stub (E)  
 Rim Elev. = 1337.00  
 Match Point

Sta 6+18.2, Line 7  
 = Sta 0+00, Line 7B  
 Construct std. manhole  
 Rim Elev. = 1338.90

Scale: 1" = 40' Horizontal  
 1" = 5' Vertical  
 • = Iron

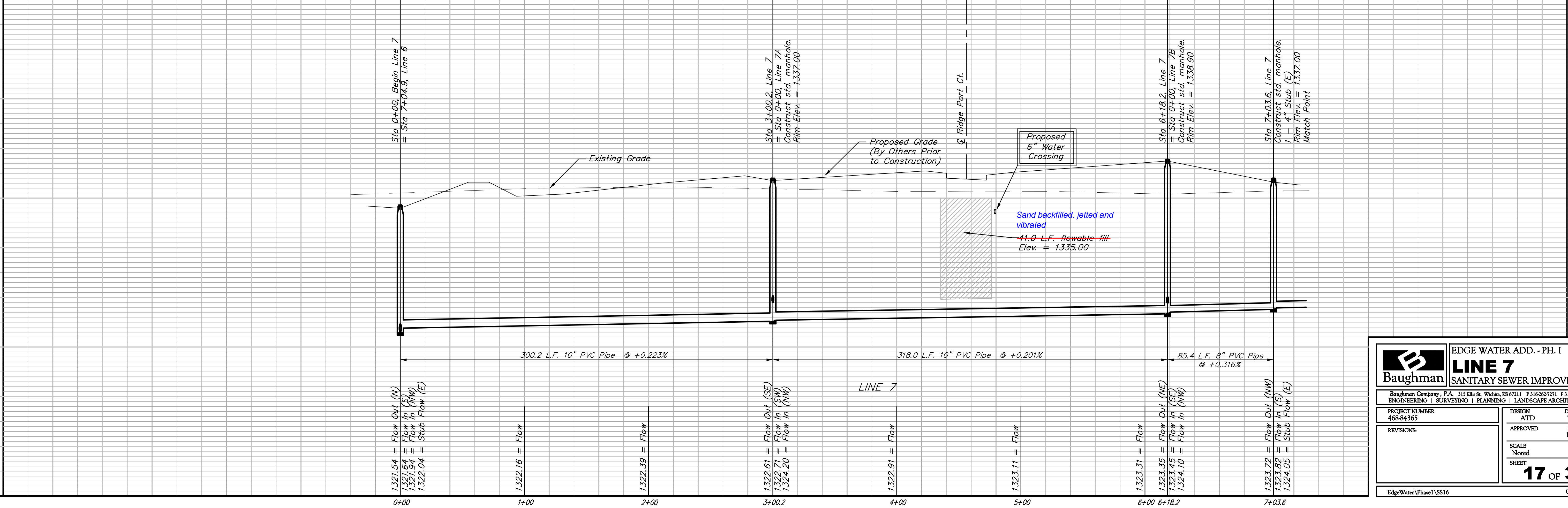
SEWER SERVICE TABLE

NUMBER	TYPE	LOCATION			STATION \ DIRECTION	FOR INFORMATION ONLY	
		LOT NO.	BLOCK NO.	LINE NO.		APPROXIMATE LENGTH 4" PIPE	
33	10" X 4" Tee	22	B	7	0+76/Lt.	10.5'	-7.0'
34	10" X 4" Tee	21	B	7	1+16/Lt.	9.5'	-7.0'
35	10" X 4" Tee	19	B	7	1+26/Rt.	9.5'	-13.0'
36	10" X 4" Tee	20	B	7	2+16/Lt.	10.5'	-7.0'
37	8" X 4" Tee	29	B	7	6+36/Lt.	11.0'	-13.0'
38	8" X 4" Tee	30	B	7	6+45/Rt.	11.0'	-7.0'
39	4" Stub	28	B	7	7+03.6/Lt.	9.5'	-13.0'

NOTE: Vertical Riser Pipe shall be extended to 2' minimum above ground water elevation and 4' maximum below proposed ground elevation.

EDGE WATER ADDITION  
 →  
 Remove trees only as **ABSOLUTELY** necessary for sanitary sewer construction and only with permission of Developer or Baughman Co. Cost of removal to be incidental to lump sum bid item "Site Clearing & Restoration".

DISTANCE FROM MAIN TO RISER (Lt./Rt.)	DISTANCE FROM	
	UPSTREAM MH	DOWNSTREAM MH
5.6' Lt.	218.2'	80.8'
5.6' Lt.	184.2'	114.8'
13.2' Rt.	177.2'	121.8'
6' Lt.	86'	213'
11' Lt.	64.6'	22'
5.3' Rt.	56.6'	30'
MH 12.2' Lt.	-	-



**Baughman** ENGINEERING | SURVEYING | PLANNING | LANDSCAPE ARCHITECTURE

EDGE WATER ADD. - PH. I  
**LINE 7**  
 SANITARY SEWER IMPROVEMENTS

PROJECT NUMBER: 468-84365  
 DESIGN: ATD  
 DRAWN: TMS

REVISIONS:

APPROVED: DATE 11/07  
 SCALE: Noted  
 SHEET: **17 OF 39**

EdgeWater\Phase1\SS16 07-05-E836