

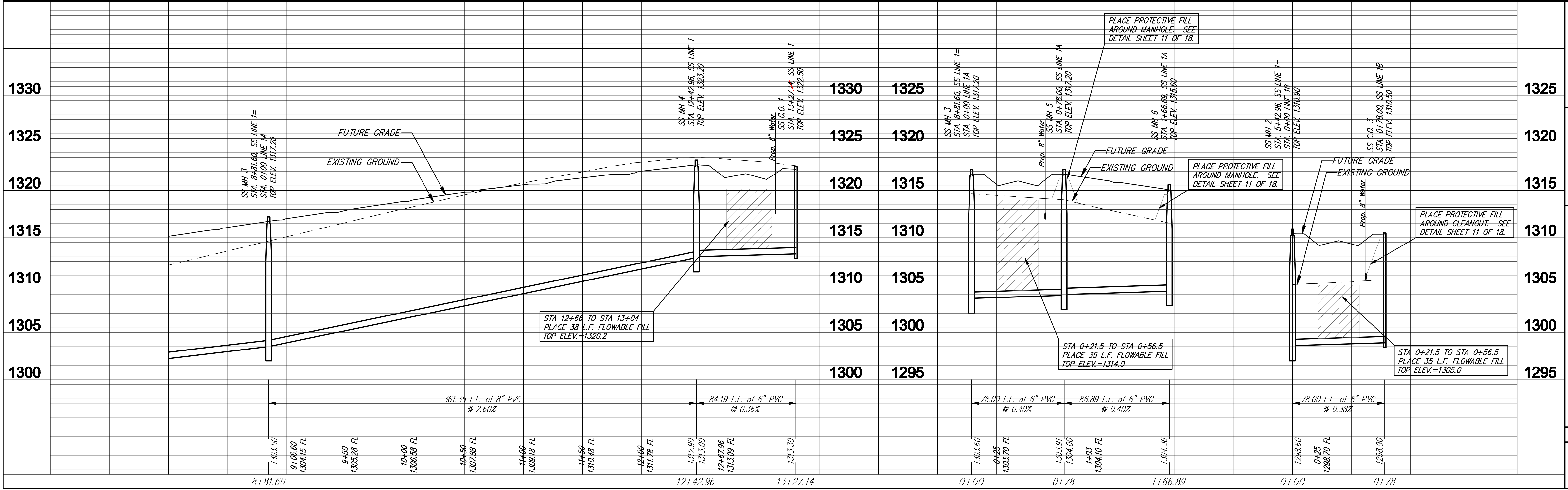
SEWER TO BE BACKFILLED WITH SAND AND FLUSHED AND VIBRATED PER CITY OF WICHITA STANDARD SPECIFICATIONS FROM STA. 8+82 TO STA. 12+43 LINE 1. SUITABILITY OF EXCAVATED SAND FOR USE AS BACKFILL WILL BE DETERMINED BY THE ENGINEER.

CAUTION: OVERHEAD ELECTRIC

SEWER SERVICE TABLE

NUMBER	TYPE	LOCATION			FOR INFORMATION ONLY		Distance from		
		LOT NO.	BLOCK NO.	LINE NO.	STATION \ DIRECTION	APPROXIMATE LENGTH 4" PIPE		Up stream MH	Down stream MH
						VERTICAL	HORIZONTAL		
7	8" X 4" Tee Saddle	3	1	1	10+64.62/R	5'	10'	181	181
8	Manhole Stub	1	1	1	12+42.96/R	5'	10'	-	-
9	Manhole Stub	2	1	1	12+42.96/L	5'	10'	-	-
10	8" X 4" Double Wye	7	2	1	13+27.14/R	6'	10'	-	-
11	8" X 4" Double Wye	6	2	1	13+27.14/L	6'	10'	-	-
12	8" X 4" Double Wye	2	3	1B	0+78/R	5'	10'	-	-
13	8" X 4" Double Wye	3	3	1B	0+78/L	5'	10'	-	-

NOTE: Vertical Riser Pipe shall be extended to 2' minimum above ground water elevation and 4' maximum below proposed ground elevation.



Ruebber & DeBorja, P.A.
 Engineering & Construction
 1700 E. 19th St., Suite 100
 Wichita, KS 67210
 Phone: 316.261.1234
 Fax: 316.261.1235
 Email: info@ruebber.com

PROJECT NUMBER: 468-84480
 DRAWING TITLE: SANITARY SEWER
 SHEET NO.: 18 OF 18
 DATE: 4/22/08
 DESIGNED BY: EJB
 CHECKED BY: AVL
 APPROVED BY: [Signature]
 PROJECT LOCATION: CAMBRIA ADDITION SANITARY SEWER WICHITA, KANSAS
 SCALE: 1" = 4' (Vertical), 1" = 40' (Horizontal)
 REVISIONS: 1. 4/22/08 - Initial Issue