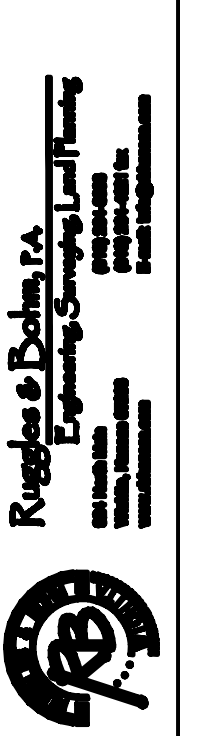
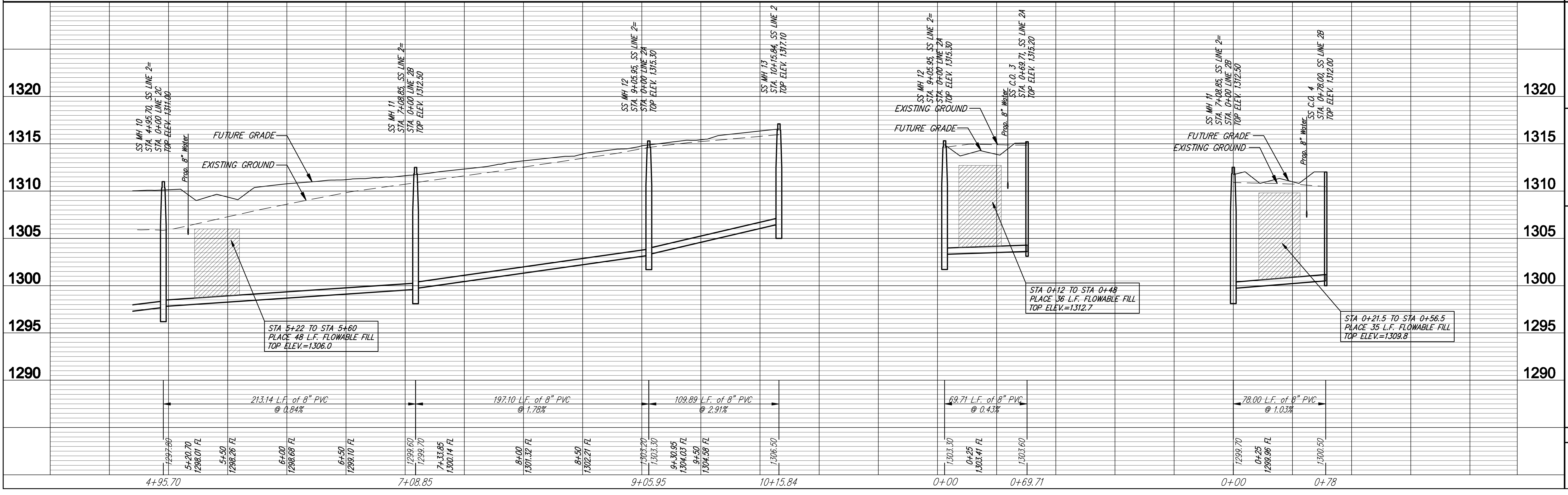


SEWER SERVICE TABLE

NUMBER	TYPE	LOCATION				FOR INFORMATION ONLY		DISTANCE FROM	
		LOT NO.	BLOCK NO.	LINE NO.	STATION DIRECTION	APPROXIMATE LENGTH 4" PIPE VERTICAL	HORIZONTAL	UPSTREAM MH	DOWNSTREAM MH
17	Manhole Stub	6	3	2	7+08.85/L	8'	10'	-	-
18	Manhole Stub	7	3	2	9+05.95/L	8'	10'	-	-
19	8" X 4" Saddle Tee	8	3	2	10+11.00/L	8'	10'	19	105
20	8" X 4" Double Wye	5	2	2A	0+69.71/R	8'	10'	-	-
21	8" X 4" Double Wye	4	2	2A	0+69.71/L	8'	10'	-	-
22	8" X 4" Double Wye	3	2	2B	0+78.00/R	8'	10'	-	-
23	8" X 4" Double Wye	2	2	2B	0+78.00/L	8'	10'	-	-

NOTE: Vertical Riser Pipe shall be extended to 2' minimum above ground water elevation and 4' maximum below proposed ground elevation.

SEWER TO BE BACKFILLED WITH SAND AND FLUSHED AND VIBRATED PER CTY OF WICHITA STANDARD SPECIFICATIONS FROM STA. 4+96 TO STA. 5+22 AND 5+60 TO STA. 10+15 LINE 2. SUITABILITY OF EXCAVATED SAND FOR USE AS BACKFILL WILL BE DETERMINED BY THE ENGINEER.



PROJECT NUMBER: 468-94480  
 SHEET: 18 OF 18  
 DATE: 4/22/08  
 DRAWN BY: EJB  
 CHECKED BY: AML  
 PROJECT: CAMBRIA ADDITION SANITARY SEWER WICHITA, KANSAS  
 SHEET TITLE: 05 Line 2 & 2a & 2b