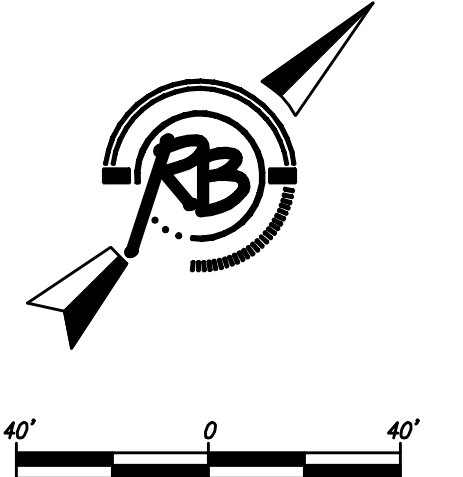
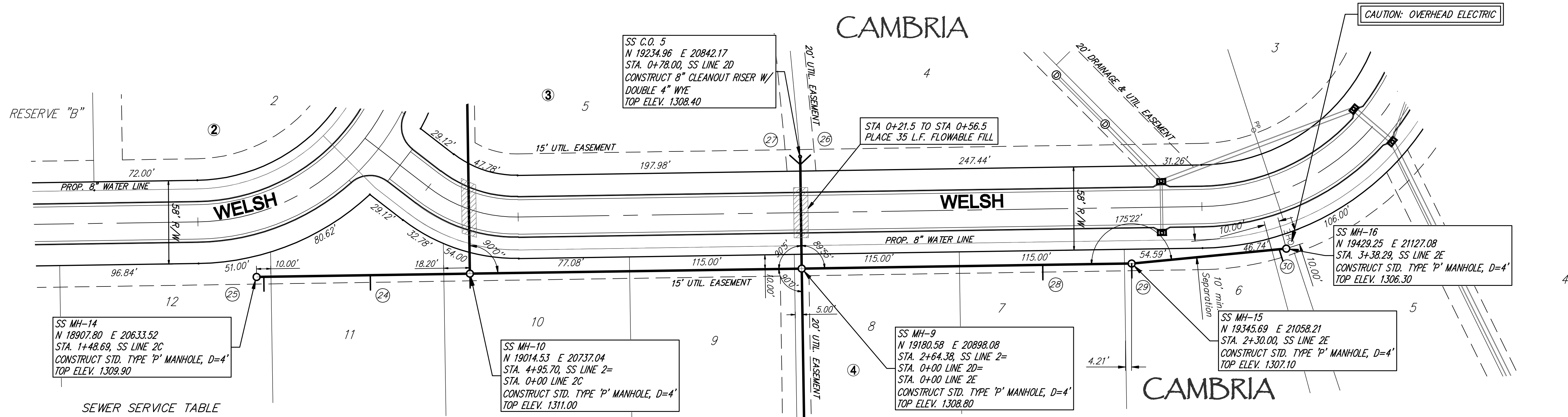


CAMBRIA



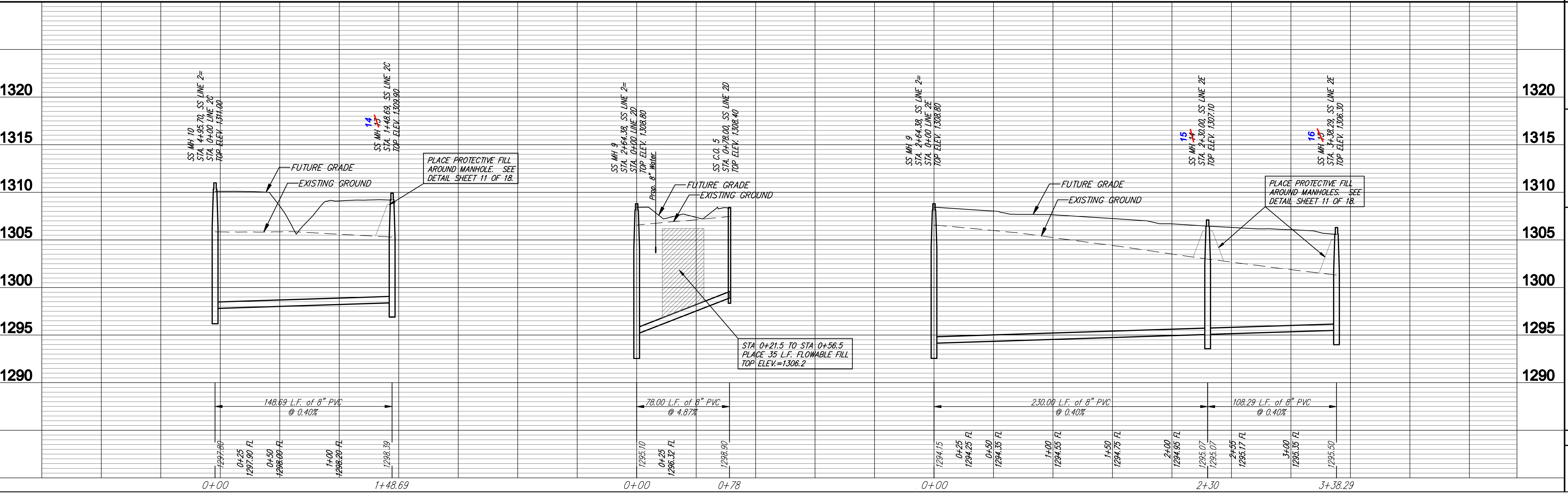
SEWER SERVICE TABLE

NUMBER	TYPE	LOCATION				FOR INFORMATION ONLY		DISTANCE FROM	
		LOT NO.	BLOCK NO.	LINE NO.	STATION \ DIRECTION	APPROXIMATE LENGTH 4" PIPE	VERTICAL	HORIZONTAL	UPSTREAM MH
24	8" X 4" Saddle Tee	11	4	2C	0+69.70/L	6'	10'	78	70
25	8" X 4" Saddle Tee	12	4	2C	1+44.40/L	6'	10'	8	140
26	8" X 4" Double Wye	4	3	2D	0+78/R	5'	10'	-	-
27	8" X 4" Double Wye	5	3	2D	0+78/L	5'	10'	-	-
28	8" X 4" Saddle Tee	7	4	2E	1+66.65/R	8'	10'	65	165
29	Manhole Stub	6	4	2E	2+30/R	6'	10'	-	-
30	8" X 4" Saddle Tee	5	4	2E	3+33.31/R	6'	10'	7	101

NOTE: Vertical Riser Pipe shall be extended to 2' minimum above ground water elevation and 4' maximum below proposed ground elevation.

SEWER TO BE BACKFILLED WITH SAND AND FLUSHED AND VIBRATED PER CTY OF WICHITA STANDARD SPECIFICATIONS FROM STA. 0+00 TO STA. 1+48 LINE 2C AND STA. 0+00 TO STA. 3+38 LINE 2E. SUITABILITY OF EXCAVATED SAND FOR USE AS BACKFILL WILL BE DETERMINED BY THE ENGINEER.

Ruegger & Deaton, P.C.
Engineering, Surveying, Land Planning
Professional Engineers
Professional Surveyors
Professional Land Planners



PROJECT NUMBER: 468-84480
PROJECT TITLE: CAMBRIA ADDITION SANITARY SEWER WICHITA, KANSAS

DATE: 4/22/08
EJB
DATE: Jan. 23, 2008
AWL
DATE: [06 Line 2c & 2d & 2ef]

18