

SS MH-EXISTING C  
N 18395.80 E 20212.20  
STA. 0+00.00, SS LINE 3  
CONSTRUCT STD. TYPE 'P' MANHOLE, D=4'  
TOP ELEV. 1305.05

SS MH-18  
N 18664.14 E 20241.80  
STA. 2+73.84, SS LINE 3=  
STA. 0+00.00, SS LINE 3A  
CONSTRUCT STD. TYPE 'P' MANHOLE, D=4'  
TOP ELEV. 1312.40

SS MH-17  
N 18474.14 E 20242.06  
STA. 0+83.84, SS LINE 3  
CONSTRUCT STD. TYPE 'P' MANHOLE, D=4'  
TOP ELEV. 1306.30

STA 3+02 TO STA 3+50  
PLACE 35 L.F. FLOWABLE FILL  
SS C.O. 6  
N 18742.24 E 20312.83  
STA. 3+79.40, SS LINE 3  
CONSTRUCT 8" CLEANOUT RISER W/ 4" WYE  
TOP ELEV. 1310.60

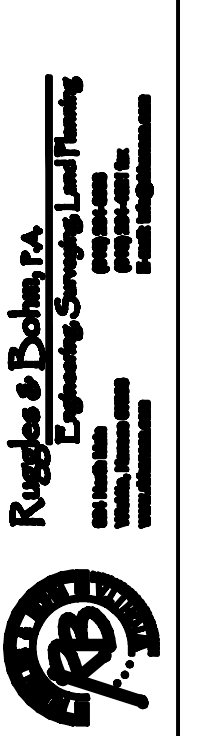
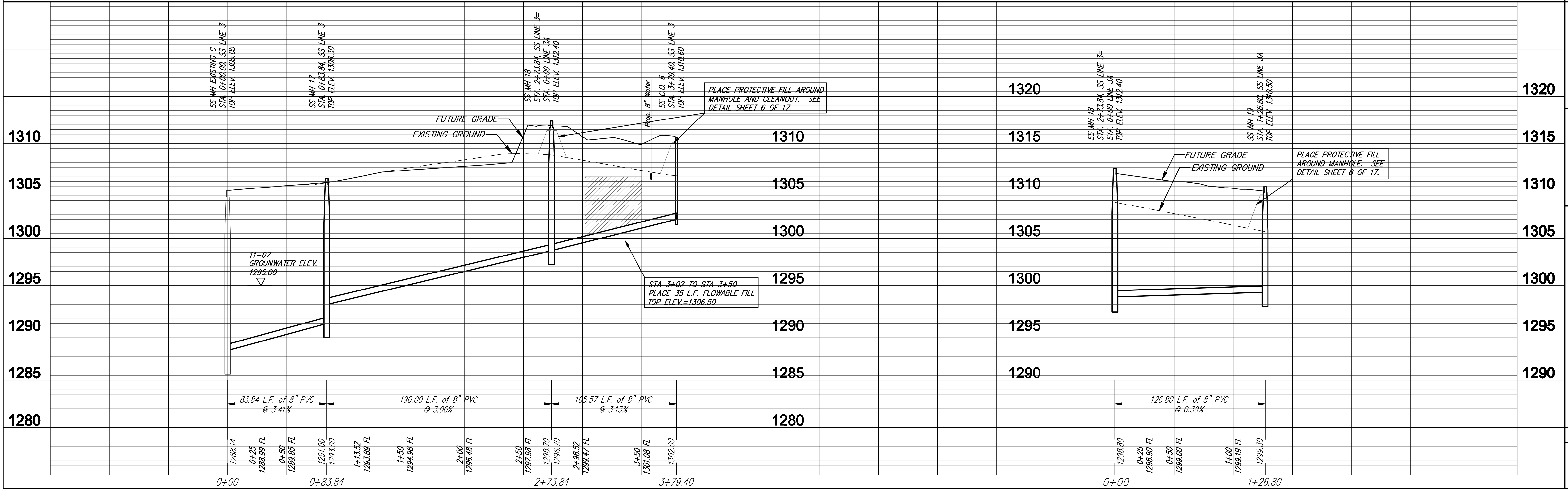
SS MH-19  
N 18670.50 E 20368.44  
STA. 1+26.80, SS LINE 3A  
CONSTRUCT STD. TYPE 'P' MANHOLE, D=4'  
TOP ELEV. 1310.50

SEWER TO BE BACKFILLED WITH SAND AND FLUSHED AND VIBRATED PER CTY OF WICHITA STANDARD SPECIFICATIONS FROM STA. 0+00 TO STA. 1+26.80 LINE 3A. SUITABILITY OF EXCAVATED SAND FOR USE AS BACKFILL WILL BE DETERMINED BY THE ENGINEER.

Note: C.O. = Change Order

DISTANCE FROM		NUMBER	TYPE	LOCATION			FOR INFORMATION ONLY		
UPSTREAM MH	DOWNSTREAM MH			LOT NO.	BLOCK NO.	LINE NO.	STATION\ DIRECTION	APPROXIMATE LENGTH 4" PIPE	VERTICAL
-	-	31	8" X 4" Single Wye	1	2	3	3+79.40/L	6'	10'
-	-	32	8" X 4" Saddle Tee	13	4	3A	1+226/R	6'	10'

NOTE: Vertical Riser Pipe shall be extended to 2' minimum above ground water elevation and 4' maximum below proposed ground elevation.



PROJECT NUMBER: 468-84480  
DATE: 4/22/08  
DRAWN BY: ALEX  
CHECKED BY: JUB  
DATE: Jan. 23, 2008  
PROJECT FILE: {07 Line 3 & 3g}

CAMBRIA ADDITION  
SANITARY SEWER  
WICHITA, KANSAS